

# HKKChain

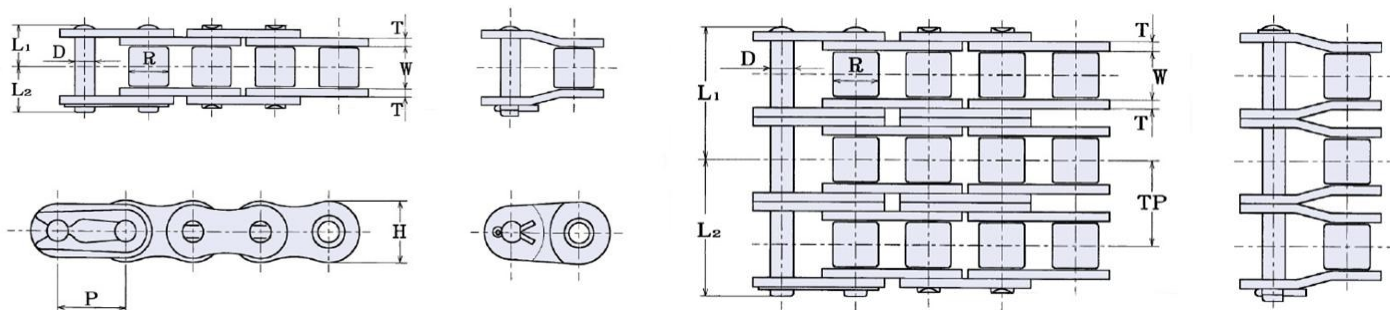


# 40

## Roller Chain

### Superior Capacity Plus

HKK's precision power transmission roller chains are technologically advanced for high strength and low elongation. HKK Superior Capacity Plus® cold-forged solid rollers and solid bushings, is of the highest quality roller chain available. Meets or exceeds ANSI standard B29.1. The most suitable selection for most any application.



#### HKK ANSI #40 Specifications

HKK Chain Number	Pitch	Roller		Pin	Plate		Overall Width		Transverse	Maximum Allowable Load (Lbs)	Average Ultimate Strength (Lbs)	Average Weight Per Foot (Lbs)
		Dia.	Width	Dia.	Height	Thickness						
	A	B	W	D	H	T	L1	L2	G			
HKK 40	1/2	0.312	5/16	0.156	0.457	0.060	.323	.354	.567	940	4,300	0.40
HKK 40-2							.603	.645		1,370	8,600	0.82
HKK 40-3							.882	.933		2,025	12,900	1.24
HKK 40-4							1.177	1.236		2,670	17,200	1.67

#### FEATURES

- Superior Capacity Plus®
- Cold-Forged Solid Bushings
- Wide waist side plates
- Full strength connecting links
- Special alloy pins
- All parts shot peened
- Many other engineered advantages

#### Other Variations

Stainless Steel  
Aqua-Series II  
Nickel Plated  
Self-Lube  
Heavy Series  
Attachments

## Made in Japan

[www.HKKChain.com](http://www.HKKChain.com)