

HKKChain



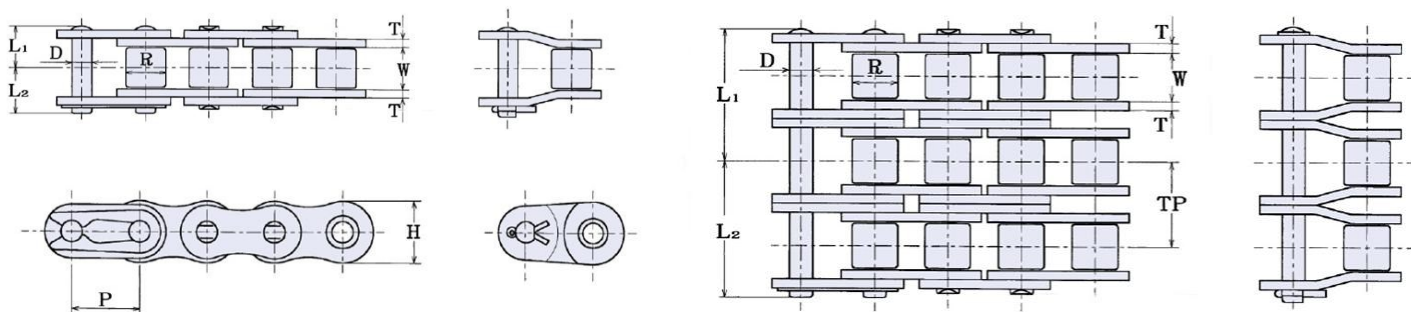
60

Roller Chain

Superior Capacity Plus

HKK's precision power transmission roller chains are technologically advanced for high strength and low elongation. HKK Superior Capacity Plus® cold-forged solid rollers and solid bushings, is of the highest quality roller chain available. Meets or exceeds ANSI standard B29.1. The most suitable selection for most any application.

Spring clip type connecting links are standard. Cotter type connecting links are available separately.



HKK ANSI #60 Specifications

HKK Chain Number	Pitch	Roller		Pin	Plate		Overall Width		Transverse	Maximum Allowable Load (Lbs)	Average Ultimate Strength (Lbs)	Average Weight Per Foot (Lbs)	
		Dia.	Width	Dia.	Height	Thickness						Rivet	
	A	B	W	D	H	T	L1	L2	G				Cotter
HKK 60	3/4	0.469	1/2	0.234	0.689	0.094	.500	.548	.898	2,470	10,000	.98	1.02
HKK 60-2							.945	1.000		3,315	20,000	1.98	2.02
HKK 60-3							1.386	1.457		4,875	30,000	2.98	2.02
HKK 60-4							1.854	1.933		6,435	40,000	3.98	4.02

FEATURES

- Superior Capacity Plus®
- Cold-Forged Solid Bushings
- Wide Waist Side Plates
- Full Strength Connecting Links
- Special Alloy Pins
- All parts shot peened
- Many other engineered advantages

Other Variations

Stainless Steel
Aqua-Series II
Nickel Plated
Self-Lube
Heavy Series
Attachments

Made in Japan

www.HKKChain.com