

# HKKChain



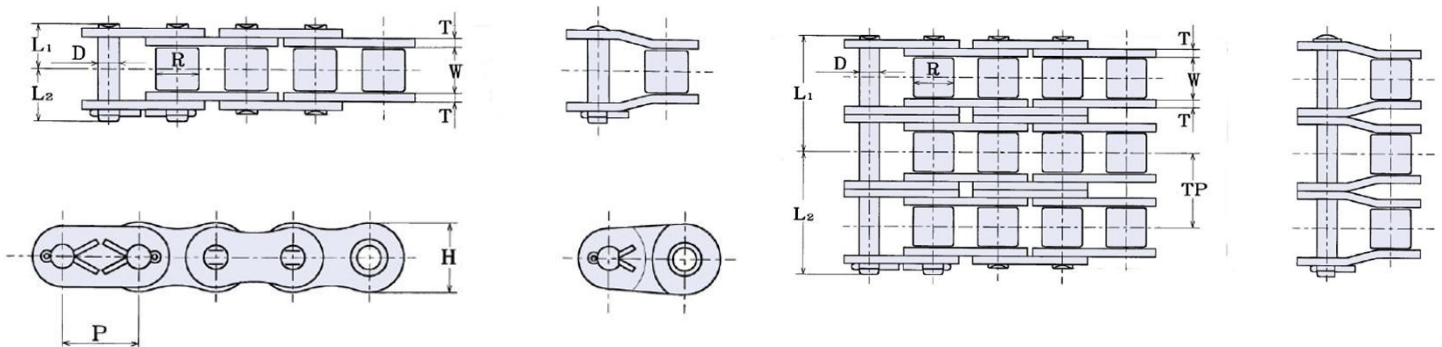
# 80

## Roller Chain

## Superior Capacity Plus

HKK's precision power transmission roller chains are technologically advanced for high strength and low elongation. HKK Superior Capacity Plus® cold-forged solid rollers and solid bushings, is of the highest quality roller chain available. Meets or exceeds ANSI standard B29.1. The most suitable selection for most any application.

Cotter type connecting links are standard. Spring clip type connecting links are available separately.



### HKK ANSI #80 Specifications

HKK Chain Number	Pitch A	Roller		Pin	Plate		Overall Width		Transverse G	Maximum Allowable Load (Lbs)	Average Ultimate Strength (Lbs)	Average Weight Per Foot (Lbs)	
		Dia.	Width	Dia.	Height	Thickness						Rivet	Cotter
		B	W	D	H	T	L1	L2					
HKK 80	1	0.625	5/8	0.312	0.921	0.125	.628	.750	1.153	4,290	17,700	1.69	1.73
HKK 80-2							1.201	1.319		5,610	35,400	3.42	3.47
HKK 80-3							1.780	1.898		8,250	53,100	5.16	5.20
HKK 80-4							2.366	2.488		10,890	70,800	6.89	6.93

#### FEATURES

- Superior Capacity Plus®
- Cold-Forged Solid Bushings & Rollers
- Wide Waist Side Plates
- Full Strength Connecting Links
- Special Alloy Pins
- All parts shot peened
- Many other engineered advantages

#### Other Variations

Stainless Steel  
Aqua-Series II  
Nickel Plated  
Self-Lube  
Heavy Series  
Attachments

## Made in Japan

[www.HKKChain.com](http://www.HKKChain.com)