

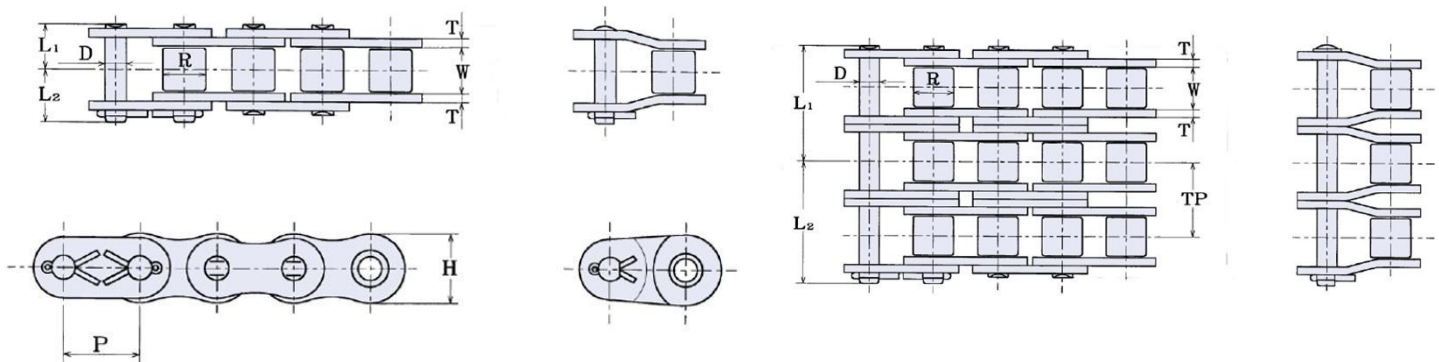
# HKKChain



# 100 Roller Chain

## Superior Capacity Plus

HKK's precision power transmission roller chains are technologically advanced for high strength and low elongation. HKK Superior Capacity Plus® cold-forged solid rollers and solid bushings, is of the highest quality roller chain available. Meets or exceeds ANSI standard B29.1. The most suitable selection for most any application.



### HKK ANSI #100 Specifications

HKK Chain Number	Pitch	Roller		Pin	Plate		Overall Width		Transverse	Maximum Allowable Load (Lbs)	Average Ultimate Strength (Lbs)	Average Weight Per Foot (Lbs)	
		Dia.	Width	Dia.	Height	Thickness							
	A	B	W	D	H	T	L1	L2	G			Rivet	Cotter
HKK 100	1-1/4	0.750	3/4	0.375	1.154	0.156	.722	.913	1.409	6,600	26,200	2.63	2.69
HKK 100-2							1.475	1.608		8,600	52,400	5.20	5.26
HKK 100-3							2.180	2.313		12,650	78,600	7.78	7.84
HKK 100-4							2.898	3.031		16,690	104,800	10.35	10.42

#### FEATURES

- Superior Capacity Plus®
- Cold-Forged Solid Bushings & Rollers
- Wide Waist Side Plates
- Full Strength Connecting Links
- Special Alloy Pins
- All parts shot peened
- Many other engineered advantages

#### Other Variations

Stainless Steel  
Aqua-Series II  
Nickel Plated  
Heavy Series  
Attachments

## Made in Japan

[www.HKKChain.com](http://www.HKKChain.com)