

HKKChain

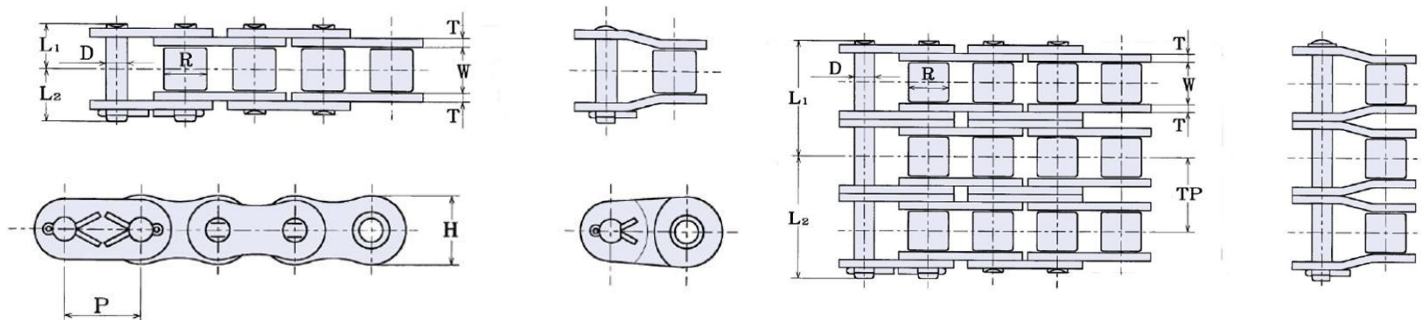


120

Roller Chain

Superior Capacity Plus

HKK's precision power transmission roller chains are technologically advanced for high strength and low elongation. HKK Superior Capacity Plus® cold-forged solid rollers and solid bushings, is of the highest quality roller chain available. Meets or exceeds ANSI standard B29.1. The most suitable selection for most any application.



HKK ANSI #120 Specifications

HKK Chain Number	Pitch	Roller		Pin	Plate		Overall Width		Transverse	Maximum Allowable Load (Lbs)	Average Ultimate Strength (Lbs)	Average Weight Per Foot (Lbs)	
		Dia.	Width	Dia.	Height	Thickness							
	A	B	W	D	H	T	L1	L2	G			Rivet	Cotter
HKK 120	1-1/2	0.875	1	0.437	1.382	0.187	.971	1.124	1.787	8,870	37,700	3.87	3.91
HKK 120-2							1.857	2.010		11,560	75,400	7.71	7.78
HKK 120-3							2.749	2.901		17,000	113,100	11.56	11.62
HKK 120-4							3.661	3.815		22,440	150,800	15.40	15.49

FEATURES

- Superior Capacity Plus®
- Cold-Forged Solid Bushings & Rollers
- Wide Waist Side Plates
- Full Strength Connecting Links
- Special Alloy Pins
- All parts shot peened
- Many other engineered advantages

Other Variations

Stainless Steel
Aqua-Series II
Nickel Plated
Heavy Series
Attachments

Made in Japan

www.HKKChain.com