

HKKChain

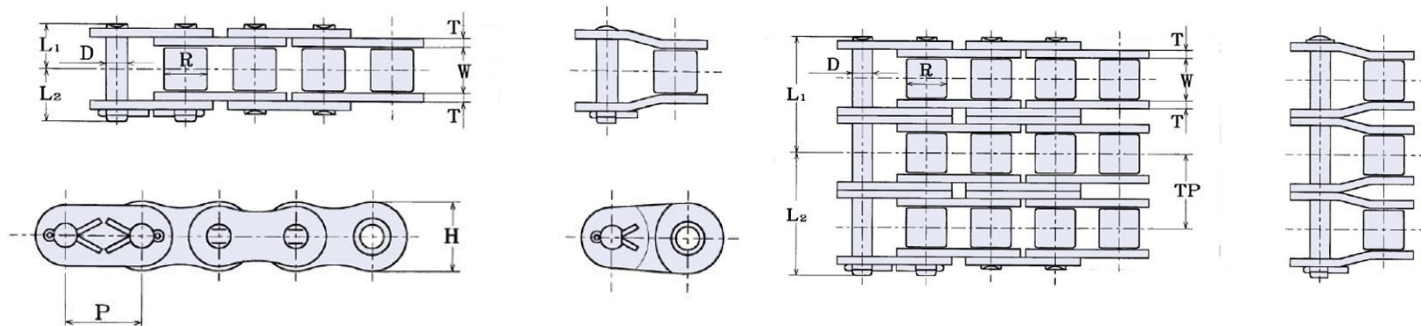


140

Roller Chain

Superior Capacity Plus

HKK's precision power transmission roller chains are technologically advanced for high strength and low elongation. HKK Superior Capacity Plus® cold-forged solid rollers and solid bushings, is of the highest quality roller chain available. Meets or exceeds ANSI standard B29.1. The most suitable selection for most any application.



HKK ANSI #140 Specifications

HKK Chain Number	Pitch	Roller		Pin	Plate		Overall Width		Transverse	Maximum Allowable Load (Lbs)	Average Ultimate Strength (Lbs)	Average Weight Per Foot (Lbs)	
		Dia.	Width	Dia.	Height	Thickness						Rivet	Cotter
	A	B	W	D	H	T	L1	L2	G				
HKK 140	1-3/4	1.000	1	0.500	1.610	0.219	1.060	1.228	1.927	11,740	48,800	4.98	5.02
HKK 140-2							2.008	2.185		15,300	97,600	9.82	9.87
HKK 140-3							2.983	3.163		22,500	146,400	14.71	14.78
HKK 140-4							3.957	4.126		29,700	195,200	19.60	19.67

FEATURES

- Superior Capacity Plus®
- Cold-Forged Solid Bushings & Rollers
- Wide Waist Side Plates
- Full Strength Connecting Links
- Special Alloy Pins
- All parts shot peened
- Many other engineered advantages

Other Variations

Stainless Steel
Aqua-Series II
Nickel Plated
Heavy Series
Attachments

Made in Japan

www.HKKChain.com