

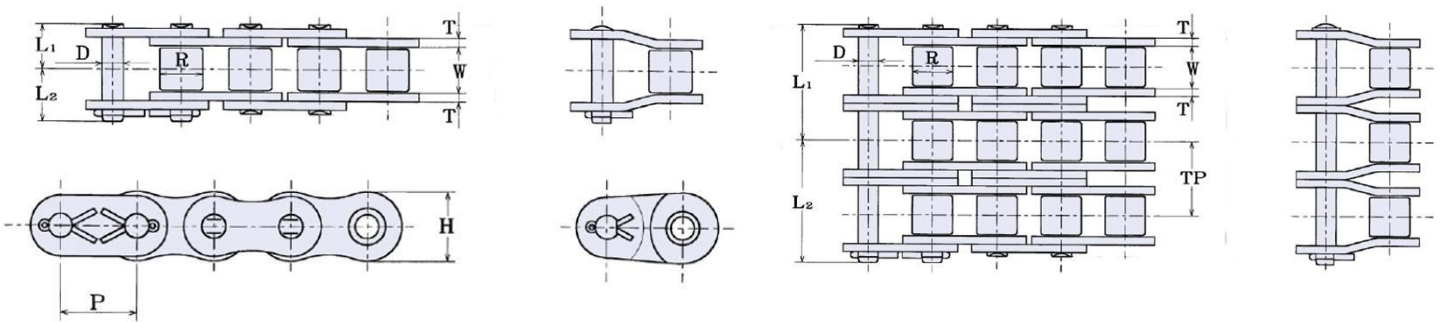
HKKChain



160 Roller Chain

Superior Capacity Plus

HKK's precision power transmission roller chains are technologically advanced for high strength and low elongation. HKK Superior Capacity Plus® cold-forged solid rollers and solid bushings, is of the highest quality roller chain available. Meets or exceeds ANSI standard B29.1. The most suitable selection for most any application.



HKK ANSI #160 Specifications

HKK Chain Number	Pitch A	Roller		Pin	Plate		Overall Width		Transverse G	Maximum Allowable Load (Lbs)	Average Ultimate Strength (Lbs)	Average Weight Per Foot (Lbs)	
		Dia.	Width	Dia.	Height	Thickness	L1	L2				Rivet	Cotter
		B	W	D	H	T							
HKK 160	2	1.125	1-1/4	0.562	1.839	0.250	1.262	1.435	2.303	15,490	62,200	6.58	6.71
HKK 160-2							2.414	2.586					
HKK 160-3							3.556	3.728					
HKK 160-4							4.728	4.902					

FEATURES

- Superior Capacity Plus®
- Cold-Forged Solid Bushings & Rollers
- Wide Waist Side Plates
- Full Strength Connecting Links
- Special Alloy Pins
- All parts shot peened
- Many other engineered advantages

Other Variations

Aqua-Series II
Stainless Steel
Attachments

Made in Japan

www.HKKChain.com