

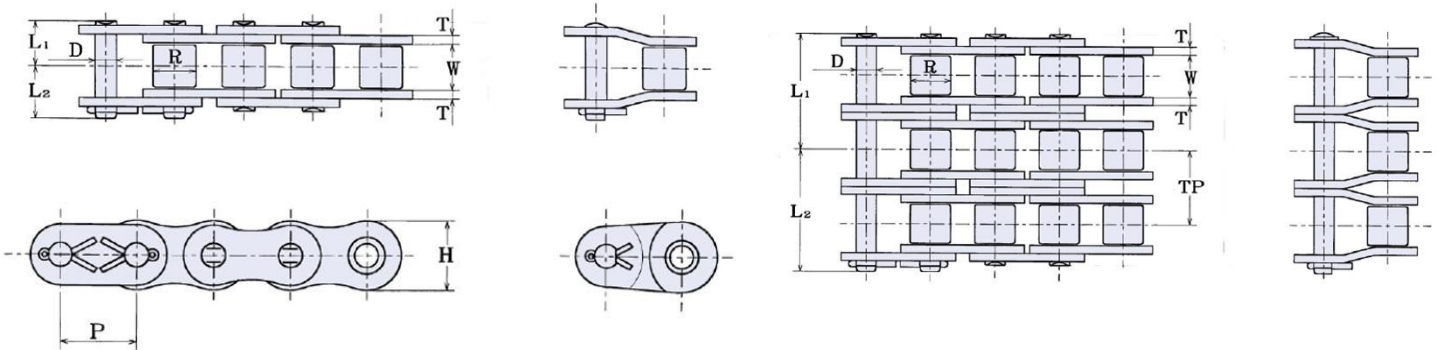
HKKChain



180 Roller Chain

Superior Capacity Plus

HKK's precision power transmission roller chains are technologically advanced for high strength and low elongation. HKK Superior Capacity Plus® cold-forged solid rollers and solid bushings, is of the highest quality roller chain available. Meets or exceeds ANSI standard B29.1. The most suitable selection for most any application.



HKK ANSI #180 Specifications

HKK Chain Number	Pitch A	Roller		Pin	Plate		Overall Width		Transverse G	Maximum Allowable Load (Lbs)	Average Ultimate Strength (Lbs)	Average Weight Per Foot (Lbs)	
		Dia.	Width	Dia.	Height	Thickness	L1	L2				Rivet	Cotter
		B	W	D	H	T							
HKK 180	2-1/4	1.406	1-13/32	0.687	2.067	0.283	1.429	1.658	2.587	17,730	77,700	9.00	9.31
HKK 180-2							2.720	2.950					
HKK 180-3							4.027	4.249					
HKK 180-4							5.315	5.539					

FEATURES

- Superior Capacity Plus®
- Cold-Forged Solid Bushings & Rollers
- Wide Waist Side Plates
- Full Strength Connecting Links
- Special Alloy Pins
- All parts shot peened
- Many other engineered advantages

Other Variations

Stainless Steel
Aqua-Series II
Nickel Plated
Heavy Series
Attachments

Made in Japan

www.HKKChain.com