

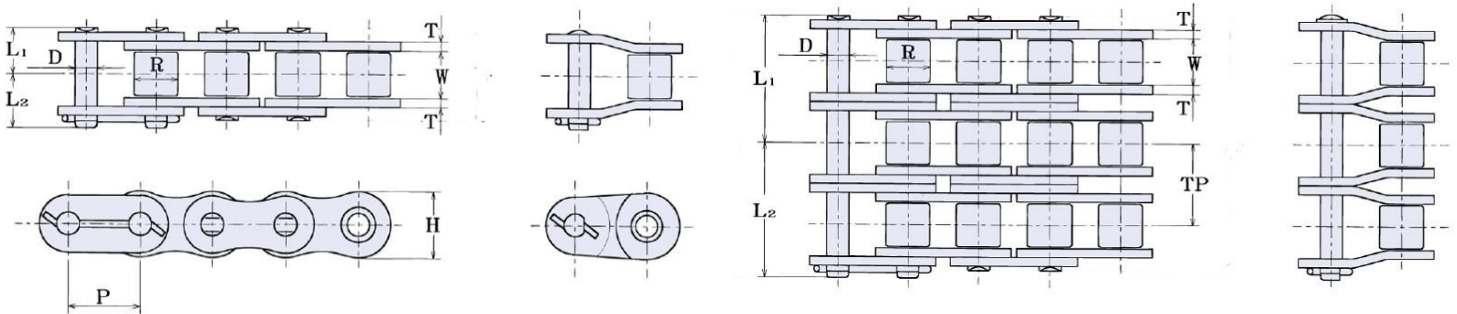
HKKChain



200 Roller Chain

Superior Capacity Plus

HKK's precision power transmission roller chains are technologically advanced for high strength and low elongation. HKK Superior Capacity Plus® cold-forged solid rollers and solid bushings, is of the highest quality roller chain available. Meets or exceeds ANSI standard B29.1. The most suitable selection for most any application.



HKK ANSI #200 Specifications

HKK Chain Number	Pitch A	Roller		Pin	Plate		Overall Width		Transverse G	Maximum Allowable Load (Lbs)	Average Ultimate Strength (Lbs)	Average Weight Per Foot (Lbs)	
		Dia.	Width	Dia.	Height	Thickness	L1	L2				Rivet	Cotter
		B	W	D	H	T							
HKK 200	2-1/2	1.562	1-1/2	0.781	2.354	0.312	1.542	1.876	2.819	20,870	102,000	11.38	11.53
HKK 200-2							2.953	3.288					
HKK 200-3							4.361	4.667					
HKK 200-4							5.772	6.130					

FEATURES

- Superior Capacity Plus®
- Cold-Forged Solid Bushings & Solid Rollers
- Wide Waist Side Plates
- Full Strength Connecting Links
- Special Alloy Pins
- All parts shot peened
- Many other engineered advantages

Other Variations

Aqua-Series II

Made in Japan

www.HKKChain.com