

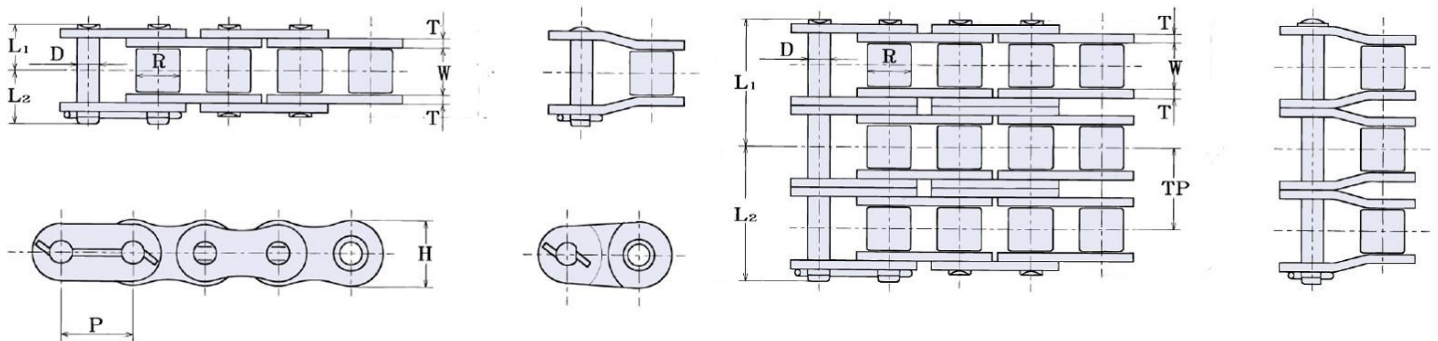
HKKChain



240 Roller Chain

Superior Capacity Plus

HKK's precision power transmission roller chains are technologically advanced for high strength and low elongation. HKK Superior Capacity Plus® cold-forged solid rollers and solid bushings, is of the highest quality roller chain available. Meets or exceeds ANSI standard B29.1. The most suitable selection for most any application.



HKK ANSI #240 Specifications

HKK Chain Number	Pitch A	Roller		Pin	Plate		Overall Width		Transverse G	Maximum Allowable Load (Lbs)	Average Ultimate Strength (Lbs)	Average Weight Per Foot (Lbs)	
		Dia.	Width	Dia.	Height	Thickness	L1	L2				Rivet	Cotter
		B	W	D	H	T							
HKK 240	3	1.875	1-7/8	0.936	2.768	0.375	1.900	3.457	3.457	28,950	148,000	15.89	16.11
HKK 240-2							3.626	3.925				31.67	31.89
HKK 240-3							5.354	5.654				47.44	47.67
HKK 240-4							7.079	7.378				63.22	63.49

FEATURES

- Superior Capacity Plus®
- Cold-Forged Solid Bushings & Rollers
- Wide Waist Side Plates
- Full Strength Connecting Links
- Special Alloy Pins
- All parts shot peened
- Many other engineered advantages

Other Variations
Aqua-Series II

Made in Japan

www.HKKChain.com