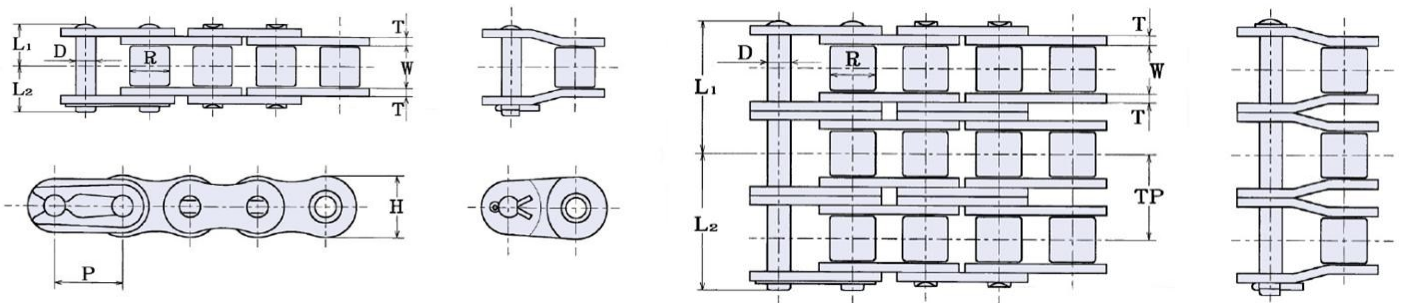




HKK's precision stainless steel roller chains are manufactured from 300 series stainless steel, to achieve the utmost corrosion and temperature resistance. Equipped with solid rollers which will not split or deform like conventional split rollers under extreme loads and temperatures. Manufactured in accordance with ANSI B29.1 dimensional standards. Manufactured in Japan



### HKK #120 Stainless Steel Specifications

HKK Chain Number	Pitch	Roller		Pin	Plate		Overall Width		Transverse Pitch	Maximum Allowable Load (Lbs)	Average Ultimate Strength (Lbs)	Average Weight Per Foot (Lbs)
		Dia.	Width	Dia.	Height	Thickness						
	A	B	W	D	H	T	L1	L2	G			
HKK 120 SS	1-1/2	0.875	1	0.437	1.382	0.187	.971	1.124	1.787	869	17,300	3.87
HKK 120-2 SS							1.857	2.010				7.71

#### FEATURES

- Made from highly corrosion resistant 304 Stainless Steel
- Solid Rollers
- Recommended for -40°F to 800°F
- All parts shot peened
- Supplied lubrication free

#### Other Variations

- 600 Series Stainless Steel
- Attachments Available

