

PRODUCT INFORMATION PACKET

marathon[®]
Motors

Model No: 143TTWD16032
Catalog No: N766
1 1/2, 1800, TEFC, 143TC, 3/60/230/460
Washdown Duty



Regal and Marathon are trademarks of Regal Beloit Corporation or one of its affiliated companies.
©2018 Regal Beloit Corporation, All Rights Reserved. MC017097E

REGAL[®]

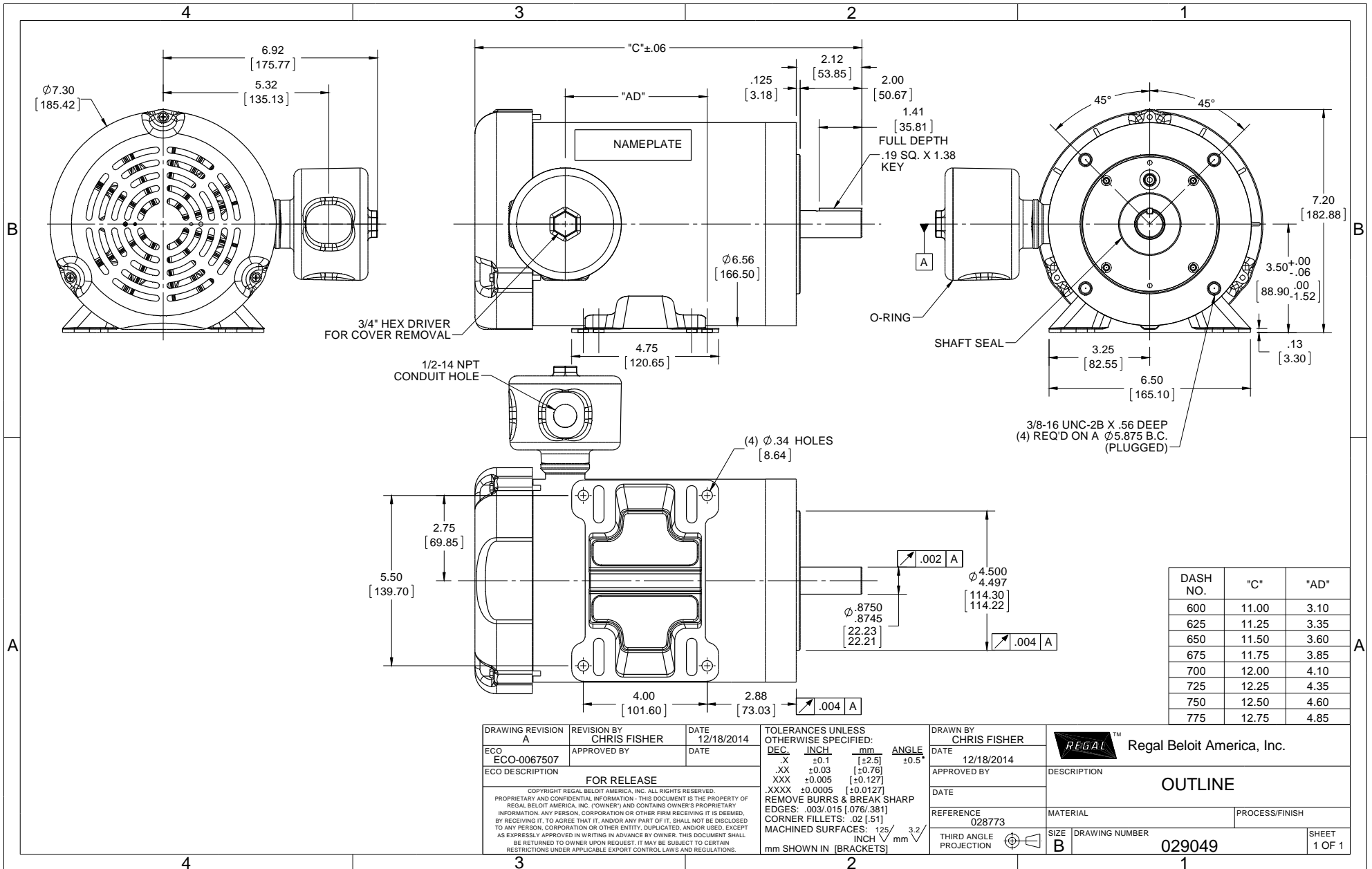


Nameplate Specifications

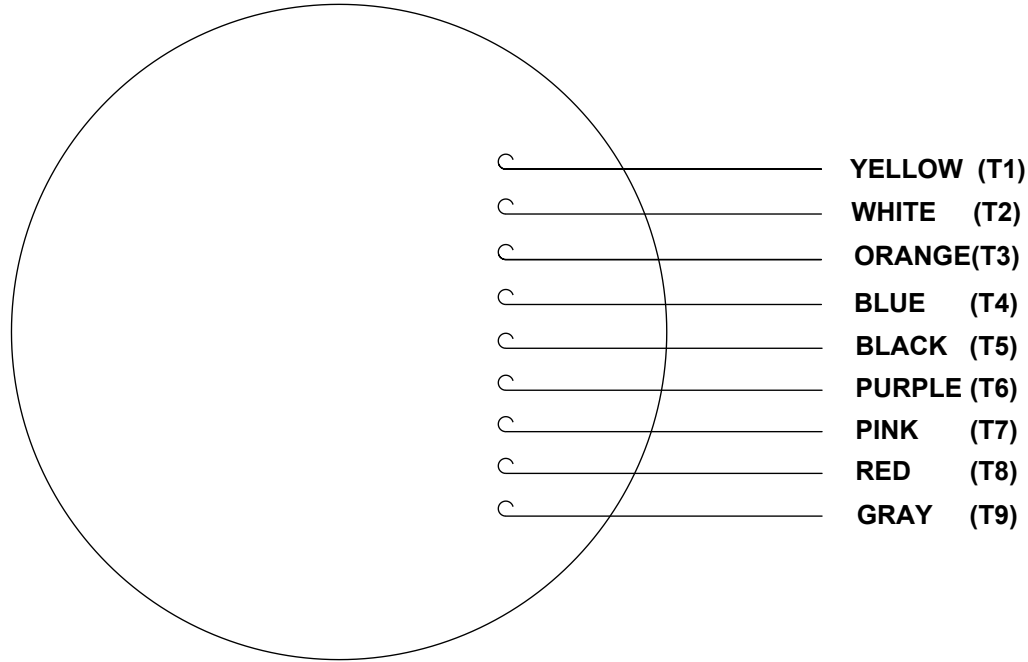
Output HP	1.5 Hp	Output KW	1.12 kW
Frequency	60 Hz	Voltage	230/460 V
Current	4.8/2.4 A	Speed	1750 rpm
Service Factor	1.15	Phase	3
Efficiency	86.5 %	Duty	CONTINUOUS
Insulation Class	F	Design Code	B
KVA Code	L	Frame	143TC
Enclosure	TEFC	Overload Protector	NOT
Ambient Temperature	40 °C	Drive End Bearing Size	6205
Opp Drive End Bearing Size	6205	UL	Recognized
CSA	Y	CE	Y
IP Code	66		

Technical Specifications

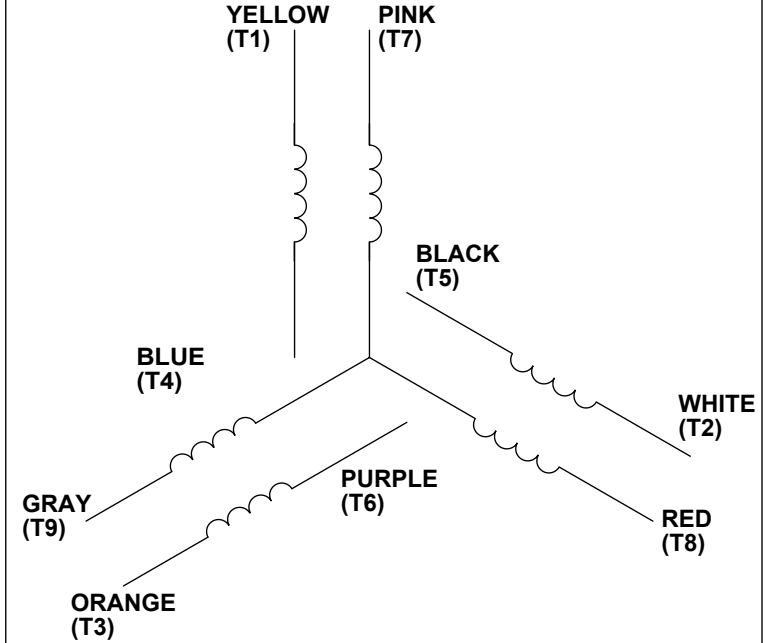
Electrical Type	SQ CAGE INV RATED	Starting Method	LINE OR INVERTER
Poles	4	Rotation	REV
Mounting	RIGID	Motor Orientation	HORIZONTAL
Drive End Bearing	BALL	Opp Drive End Bearing	BALL
Frame Material	STAINLESS STEEL	Shaft Type	T
Overall Length	12.75 in	Frame Length	7.75 in
Shaft Diameter	0.88 in	Shaft Extension	2.12 in
Assembly/Box Mounting	F1/F2 CAPABLE		
Outline Drawing	029049-775	Connection Diagram	5010.52



VIEW FROM OUTSIDE OF MOTOR AT SWITCH END.



LINE LEADS



VOLTAGE	L1	L2	L3	JOIN & INSULATE
HIGH	T1	T2	T3	(T4,T7) (T5,T8) (T6,T9)
LOW	T1,T7	T2,T8	T3,T9	T4,T5,T6

RBC PROPRIETARY AND CONFIDENTIAL INFORMATION

This document is the property of REGAL BELOIT CORPORATION ("RBC") including its subsidiaries and divisions and contains proprietary information of RBC. This document is loaned on the express condition that neither it nor the information contained therein shall be disclosed to others without the express written consent of RBC, and that the information shall be used by the recipient only as approved expressly by RBC. This document shall be returned to RBC upon its request. This document may be subject to certain restrictions under U.S. export control laws and regulations.

DRAWING REVISION C	REVISION BY PVR	DATE 04/23/14	TOLERANCES UNLESS OTHERWISE SPECIFIED: <div>DEC. INCH mm ANGLE</div> <div>.X ±0.1 [±2.5] ±0.5°</div> <div>.XX ±0.01 [±0.25]</div> <div>XXX ±0.005 [±0.127]</div> <div>.XXXX ±0.0005 [±0.0127]</div> <div>REMOVE BURRS & BREAK SHARP</div> <div>EDGES: .003/.015 [.076/.381]</div> <div>CORNER FILLETS: .02 [.51]</div> <div>MACHINED SURFACES: 125/3.2/INCH mm</div> <div>mm SHOWN IN [BRACKETS]</div>	DRAWN BY LST	<div>REGALTM Regal Beloit America, Inc.</div>			
ECO ECO-0049985	APPROVED BY JD	DATE 04/23/14		DATE 4/3/14	DESCRIPTION <div>LEAD ASSY</div> <div>EXT. WIRING DIA. 3 PH. W/O PROT.</div>			
ECO DESCRIPTION UPDATED PER ECO-0049985				APPROVED BY				
<div>COPYRIGHT REGAL BELOIT AMERICA, INC. ALL RIGHTS RESERVED.</div> <div>PROPRIETARY AND CONFIDENTIAL INFORMATION - THIS DOCUMENT IS THE PROPERTY OF REGAL BELOIT AMERICA, INC. ("OWNER") AND CONTAINS OWNER'S PROPRIETARY INFORMATION. ANY PERSON, CORPORATION OR OTHER FIRM RECEIVING IT IS DEEMED, BY RECEIVING IT, TO AGREE THAT IT, AND/OR ANY PART OF IT, SHALL NOT BE DISCLOSED TO ANY PERSON, CORPORATION OR OTHER ENTITY, DUPLICATED, AND/OR USED, EXCEPT AS EXPRESSLY APPROVED IN WRITING IN ADVANCE BY OWNER. THIS DOCUMENT SHALL BE RETURNED TO OWNER UPON REQUEST. IT MAY BE SUBJECT TO CERTAIN RESTRICTIONS UNDER APPLICABLE EXPORT CONTROL LAWS AND REGULATIONS.</div>				DATE	MATERIAL			
				PROCESS/FINISH				
						THIRD ANGLE PROJECTION	<div>SIZE A</div>	DRAWING NUMBER 00501052

CERTIFICATION DATA SHEET

Model#: 143TTWD16032 AP **WINDING#:** T634341 FR 7
CONN. DIAGRAM: 005010.52 **ASSEMBLY:** F1/F2 CAPABLE
OUTLINE: 029049-775

TYPICAL MOTOR PERFORMANCE DATA

HP	KW	SYNC. RPM	F.L. RPM	FRAME	ENCLOSURE	KVA CODE	DESIGN
1 1/2&1	1.12&.75	1800	1750&1450	143TC	TEFC	L	B

PH	Hz	VOLTS	FL AMPS	START TYPE	DUTY	INSL	S.F	AMB°C	ELEVATION
3	60/50	230/460#190/ 380	4.8/2.4&5.6/2. 8	LINE OR INVERTER	CONTINUOU S	F4	1.15/1.15	40	3300

FULL LOAD EFF: 86.5&84	3/4 LOAD EFF: 87.2	1/2 LOAD EFF: 84.2	GTD. EFF	ELEC. TYPE	NO LOAD AMPS
FULL LOAD PF: 67.7&70	3/4 LOAD PF: 67.3	1/2 LOAD PF: 55.2	0	SQ CAGE INV RATED	2.5 / 1.2

F.L. TORQUE	LOCKED ROTOR AMPS	L.R. TORQUE	B.D. TORQUE	F.L. RISE°C
4.5 LB-FT	37 / 18.5	17.2 LB-FT 382	20.4 LB-FT 453	45

SOUND PRESSURE @ 3 FT.	SOUND POWER	ROTOR WK^2	MAX. WK^2	SAFE STALL TIME	STARTS /HOUR	APPROX. MOTOR WGT
0 dBA	10 dBA	0.14 LB-FT^2	0.1 LB-FT^2	10 SEC.	0	0 LBS.

*** SUPPLEMENTAL INFORMATION ***

DE BRACKET TYPE	ODE BRACKET TYPE	MOUNT TYPE	ORIENTATION	SEVERE DUTY	HAZARDOUS LOCATION	DRIP COVER	SCREENS	PAINT
C-FACE	STANDARD	RIGID	HORIZONTAL	FALSE	NONE	FALSE	NONE	NO PAINT

BEARINGS		GREASE	SHAFT TYPE	SPECIAL DE	SPECIAL ODE	SHAFT MATERIAL	FRAME MATERIAL
DE	OPE	POLYREX EM	T	NONE	NONE	303 STAINLESS (C-501)	STAINLESS STEEL
BALL	BALL						
6205	6205						

THERMO-PROTECTORS				THERMISTORS	CONTROL	SPACE /n HEATERS
THERMOSTATS	PROTECTORS	WDG RTDs	BRG RTDs			
NONE	NOT	NONE	NONE	NONE	FALSE	NONE VOLTS

If Inverter equals NONE, contact factory for further information

*
N
O
T
E
S
*

INVERTER TORQUE: CONSTANT 3:1		
INV. HP SPEED RANGE: NONE		
ENCODER: NONE		
NONE NONE		
NONE NONE PPR		
BRAKE: NONE NONE		
NONE P/N NONE		
NONE NONE		
NONE FT-LB	NONE V	NONE Hz

DATE: 06/23/2017 12:57:17 AM
 FORM 3531 REV.3 02/07/99
 ** Subject to change without notice.