

PRODUCT INFORMATION PACKET

Model No: 143THTN8036
Catalog No: Y986
1,1800,TENV,143TC,3/60/230/460
Brake



Regal and Marathon are trademarks of Regal Beloit Corporation or one of its affiliated companies.
©2018 Regal Beloit Corporation, All Rights Reserved. MC017097E



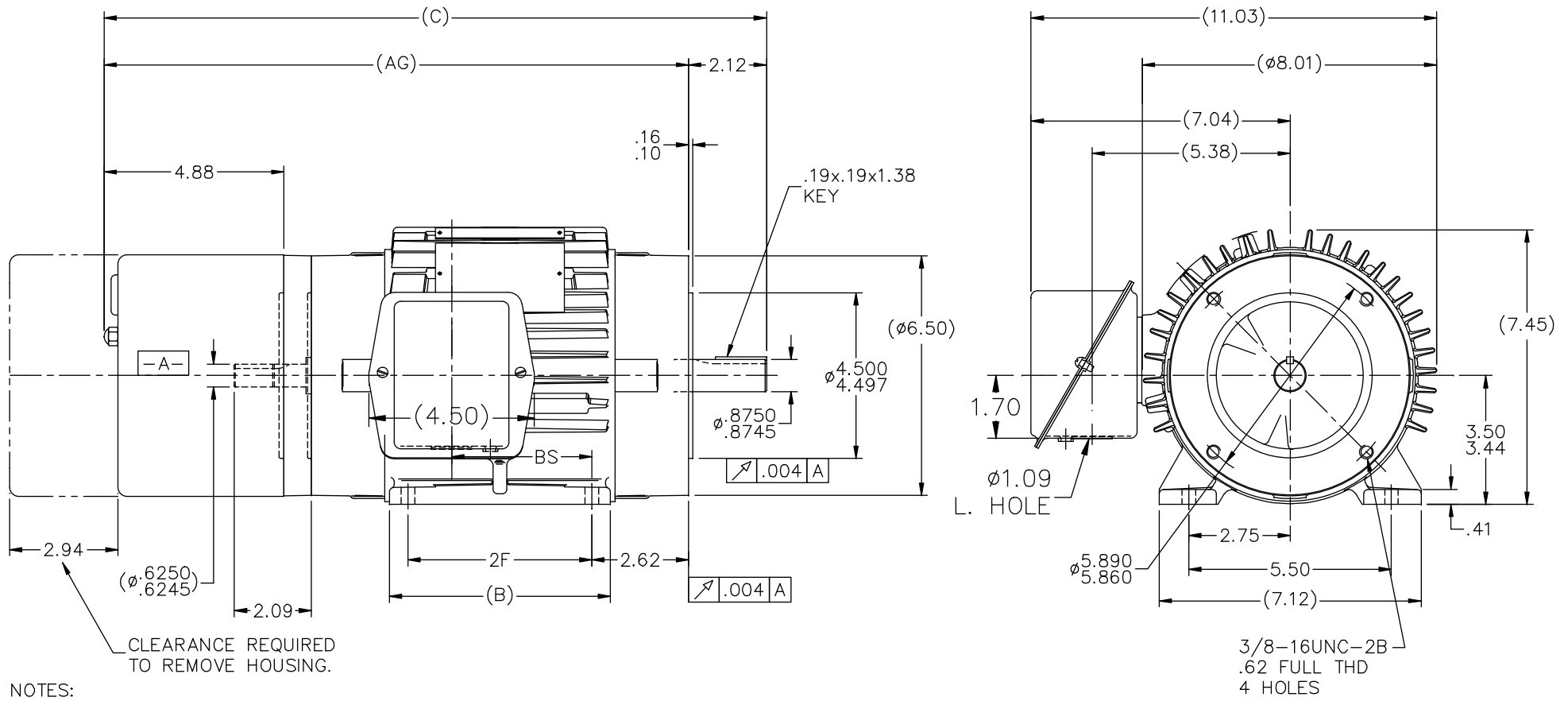


Nameplate Specifications

Output HP	1 Hp	Output KW	0.75 kW
Frequency	60 Hz	Voltage	230/460 V
Current	3/1.5 A	Speed	1756 rpm
Service Factor	1	Phase	3
Efficiency	85.5 %	Duty	CONTINUOUS (S1)
Insulation Class	F	Design Code	INV
KVA Code	M	Frame	143TC
Enclosure	TENV	Overload Protector	NOT
Ambient Temperature	40 °C	Drive End Bearing Size	6205
Opp Drive End Bearing Size	6205	UL	Recognized
CSA	Y	CE	Y
IP Code	43		

Technical Specifications

Electrical Type	SQ CAGE INV DUTY	Starting Method	INVERTER ONLY
Poles	4	Rotation	REV
Mounting	RIGID	Motor Orientation	HORIZONTAL
Drive End Bearing	BALL	Opp Drive End Bearing	BALL
Frame Material	CAST IRON	Shaft Type	T
Overall Length	17 in	Frame Length	5.25 in
Shaft Diameter	0.88 in	Shaft Extension	2.12 in
Assembly/Box Mounting	F1/F2 CAPABLE		
Outline Drawing	A-104965-525	Connection Diagram	A-EE7308T



- NOTES:
 1- BOX CAN BE ROTATED IN 90° STEPS.
 2- BOX CAN BE MOUNTED ON OPPOSITE SIDE BY REMOVING BRACKETS AND TURNING FRAME 180°.
 3- NAMEPLATE READ FROM CONDUIT BOX SIDE.

525	143T	17.00	14.88	5.00	4.00	2.81	
625	145T	18.00	15.88	6.00	5.00	3.81	
DASH	FRAME	C	AG	B	2F	BS	

5	CORRECTED COND BOX VIEW PER ECR-0044247	UD 12-10-13	AB	TOLERANCES UNLESS SPECIFIED		DRAWN DRS 05-24-2001
4	REDRAWN IN AUTOCAD	TAT 06-24-2005	DRS	DEC. INCHES		CHK ML 06-19-2001
3	REVISED TO SHOW ADAPTER B-92093A, AND REMOVED IF USED NOTE ON 31288	NJS 08-31-2001	.X	±.1	TITLE OUTLINE - C' FACE - TS - TENV 140T FR.-BRAKE & PROVISIONS FOR TACH.	APPD GK 06-19-2001
2	UPDATED SHAFT EXTENSION ON O.D.E AND ADDED ADAPTER NOTE	DRS 08-17-2001	.XX	±.03		SCALE 3=B
			.XXX	±.005	MAT'L.	REF
			.XXXX	±.0005	FINISH	FMF
			CHK	ANG ±7'30"		PREV
THIS DRAWING IN DESIGN AND DETAIL IS OUR PROPERTY AND MUST NOT BE USED EXCEPT IN CONNECTION WITH OUR WORK ALL RIGHTS OF DESIGN AND INVENTION ARE RESERVED THIS IS AN ELECTRONICALLY GENERATED DOCUMENT - DO NOT SCALE THIS PRINT					RFP	CAD FILE 104965
					DIST WP	SIZE B DRAWING NO. 104965 PAGE OF 5 REV. 5

HIGH VOLTAGE

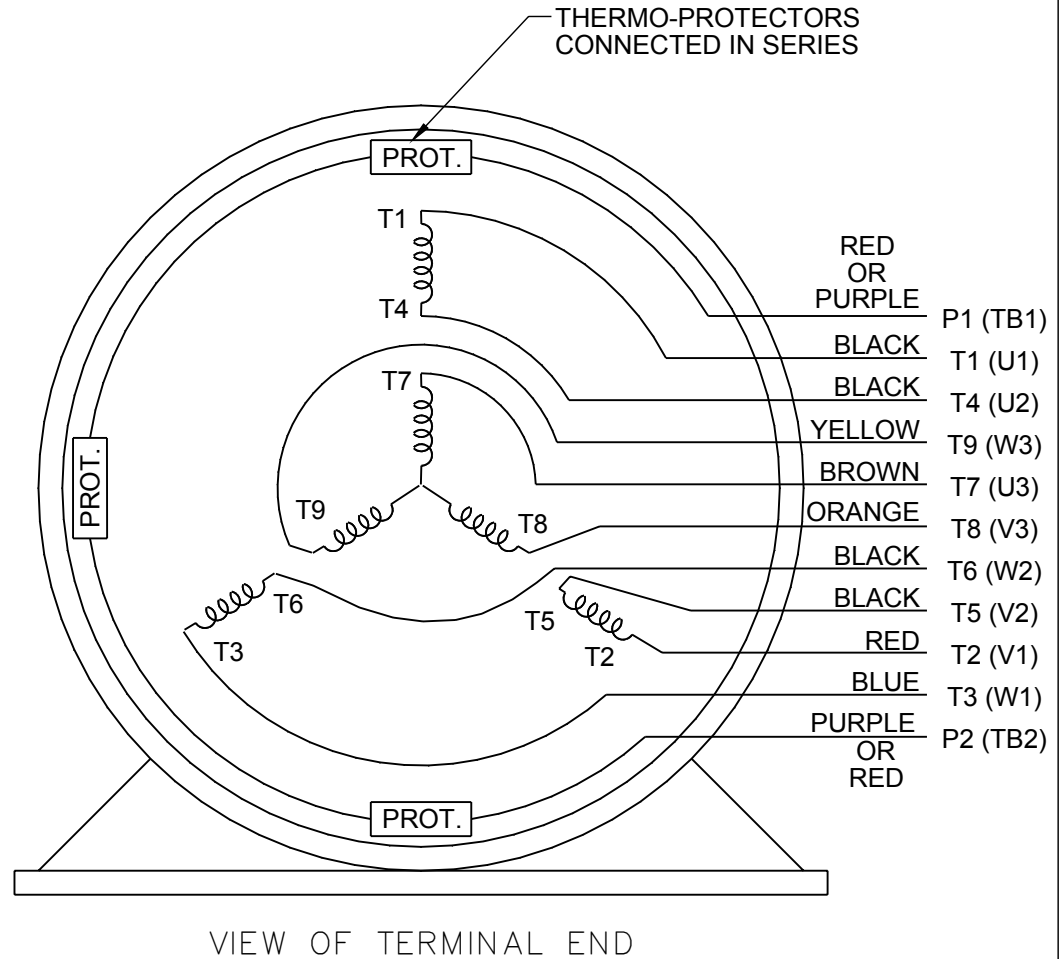


**NOTE FOR FACTORY USE ONLY:
TO SURGE TEST FOR COMMON CONNECT:**
HIGH VOLT: CONNECT P1 TO T1
THEN P2 TO L1
LOW VOLT: CONNECT P1 TO T1 & T7,
THEN P2 TO L1

LOW VOLTAGE



THREE PHASE DUAL VOLTAGE MOTOR



NOTE: LEAD'S COLOR CAN BE YELLOW OR WHITE FOR MT2 PLANT

DRAWING REVISION R	REVISION BY AJW	DATE 07-17-2015		DRAWN BY SMC	Regal Beloit America, Inc.
ECO ECO-0081632	APPROVED BY T. VUE	DATE 07-17-2015		DATE 05-13-1992	
ECO DESCRIPTION REV'D IEC NOTATIONS PER IEC 60034-8				APPROVED BY TB	DESCRIPTION CONN DIAGRAM-INTERNAL
<small>COPYRIGHT REGAL BELOIT AMERICA, INC. ALL RIGHTS RESERVED. PROPRIETARY AND CONFIDENTIAL INFORMATION - THIS DOCUMENT IS THE PROPERTY OF REGAL BELOIT AMERICA, INC. ("OWNER") AND CONTAINS OWNER'S PROPRIETARY INFORMATION. ANY PERSON, CORPORATION OR OTHER FIRM RECEIVING IT IS DEEMED, BY RECEIVING IT, TO AGREE THAT IT, AND/OR ANY PART OF IT, SHALL NOT BE DISCLOSED TO ANY PERSON, CORPORATION OR OTHER ENTITY, DUPLICATED, AND/OR USED, EXCEPT AS EXPRESSLY APPROVED IN WRITING IN ADVANCE BY OWNER. THIS DOCUMENT SHALL BE RETURNED TO OWNER UPON REQUEST. IT MAY BE SUBJECT TO CERTAIN RESTRICTIONS UNDER APPLICABLE EXPORT CONTROL LAWS AND REGULATIONS.</small>				DATE 05-13-1992	3 PHASE - DUAL VOLTAGE MOTOR
			REFERENCE EE7308/EE7300	MATERIAL	PROCESS/FINISH
			THIRD ANGLE PROJECTION	SIZE A	DRAWING NUMBER EE7308T

CERTIFICATION DATA SHEET

Model#: 143THTN8036 AA WINDING#: ZT492 F 3
 CONN. DIAGRAM: A-EE7308T ASSEMBLY: F1/F2 CAPABLE
 OUTLINE: A-104965-525

TYPICAL MOTOR PERFORMANCE DATA

HP	KW	SYNC. RPM	F.L. RPM	FRAME	ENCLOSURE	KVA CODE	DESIGN
1	0.75	1800	1756	143TC	TENV	M	INV

PH	Hz	VOLTS	FL AMPS	START TYPE	DUTY	INSL	S.F	AMB°C	ELEVATION
3	60	230/460	3/1.5	INVERTER ONLY	CONTINUOUS (S1)	F3	1.0	40	3300

FULL LOAD EFF: 85.5	3/4 LOAD EFF: 86.5	1/2 LOAD EFF: 85.5	GTD. EFF	ELEC. TYPE	NO LOAD AMPS
FULL LOAD PF: 72	3/4 LOAD PF: 67	1/2 LOAD PF: 53.5	82.5	SQ CAGE INV DUTY	1.7 / .9

F.L. TORQUE	LOCKED ROTOR AMPS	L.R. TORQUE	B.D. TORQUE	F.L. RISE°C
3 LB-FT	27 / 13.5	10.8 LB-FT 360	14 LB-FT 467	40

SOUND PRESSURE @ 3 FT.	SOUND POWER	ROTOR WK^2	MAX. WK^2	SAFE STALL TIME	STARTS /HOUR	APPROX. MOTOR WGT
62 dBA	72 dBA	0.1 LB-FT^2	0 LB-FT^2	10 SEC.	0	55 LBS.

EQUIVALENT WYE CKT.PARAMETERS (OHMS PER PHASE)

R1	R2	X1	X2	XM
8.094	5.4812	11.644	10.366	301.04

RM	ZREF	XR	TD	TD0
12070	284	1.7	0.0075	0.15

*** SUPPLEMENTAL INFORMATION ***

DE BRACKET TYPE	ODE BRACKET TYPE	MOUNT TYPE	ORIENTATION	SEVERE DUTY	HAZARDOUS LOCATION	DRIP COVER	SCREENS	PAINT
C-FACE	BRAKE AND ENCODER	RIGID	HORIZONTAL	FALSE	NONE	FALSE	NONE	BLUE (POWDER)

BEARINGS		GREASE	SHAFT TYPE	SPECIAL DE	SPECIAL ODE	SHAFT MATERIAL	FRAME MATERIAL
DE	OPE						
BALL	BALL	POLYREX EM	T	NONE	NONE	1144 STRESSPROOF (C-223)	CAST IRON
6205	6205						

THERMO-PROTECTORS				THERMISTORS	CONTROL	SPACE /n HEATERS
THERMOSTATS	PROTECTORS	WDG RTDs	BRG RTDs			
TSTATS (N/C)	NOT	NONE	NONE	NONE	FALSE	NONE VOLTS

If Inverter equals NONE, contact factory for further information

INVERTER TORQUE: CONSTANT 2000:1
INV. HP SPEED RANGE: 2.0 X BASE SPEED
ENCODER: PROVISIONS ONLY
NONE NONE
NONE NONE PPR
BRAKE: REGAL SUPPLIED AND MOUNT

*
N
O
T
E
S
*

NONE	
STEARNS	P/N 91697-6A1KB
56,000	NEMA 2
6 FT-LB	208-230/460-190/380 V
60/50 Hz	

DATE: 06/21/2017 11:38:27 AM
FORM 3531 REV.3 02/07/99
** Subject to change without notice.

Data Sheet

Date: 15-06-2017
 Customer: _____
 Attention: _____
 Submitted by: FAREEDA DUDEKULA



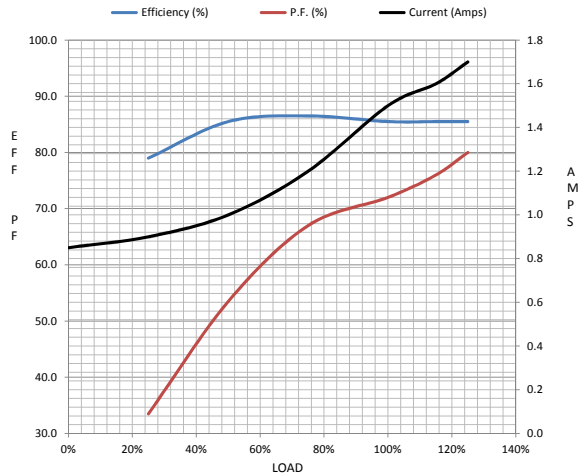
143THTN8036

Submittal

Data @ 460 V

Motor Load Data									
Load	0%	25%	50%	75%	100%	115%	125%	LR	
Current (Amps)	0.85	0.90	1.00	1.20	1.50	1.60	1.70	13.5	
Torque (ft-lb)	0.00	0.75	1.50	2.20	3.0	3.4	3.8	10.8	
RPM	1800	1790	1780	1768	1756	1,752	1745	0	
Efficiency (%)		79.0	85.5	86.5	85.5	85.5	85.5		
P.F. (%)	9.5	33.5	53.5	67.0	72.0	76.0	80.0	67.0	

Motor Speed Data						Information Block				
	LR	Pull-Up	BD	Rated	Idle					
Speed (RPM)	0	600	1300	1756	1800	HP	1.0			
Current (Amps)	13.5	12.5	9.0	1.50	0.85	Sync. RPM	1800			
Torque (ft-lb)	10.8	11.0	14.0	3.0	0.00	Frame	143			
						Enclosure	TENV			
						Construction	TTN			
						Voltage	230/460 V			
						Frequency	60 Hz			
						Design	A			
						LR Code letter	M			
						Service Factor	1.15			
						Temp Rise @ FL	40 ° C			
						Duty	CONT			
						Ambient	40 ° C			
						Elevation	1,000 feet			
						Rotor/Shaft wk²	0.10 Lb-FT²			
						Ref Wdg	ZT492 F			
						Sound Pressure @ 1M	62 dBA			
						VFD Rating	CONSTANT 2000:1			
						Outline Dwg	A-104965-525			
						Conn. Diag	A-EE7308T			
						Additional Specifications:				
						0				
						365THFS8036				
						EQUIV CKT (OHMS / PHASE)				
						R1	R2	X1	X2	Xm
						8.0940	5.4810	11.6440	10.3660	301.0400



HP	1.0			
Sync. RPM	1800			
Frame	143			
Enclosure	TENV			
Construction	TTN			
Voltage	230/460 V			
Frequency	60 Hz			
Design	A			
LR Code letter	M			
Service Factor	1.15			
Temp Rise @ FL	40 ° C			
Duty	CONT			
Ambient	40 ° C			
Elevation	1,000 feet			
Rotor/Shaft wk²	0.10 Lb-FT²			
Ref Wdg	ZT492 F			
Sound Pressure @ 1M	62 dBA			
VFD Rating	CONSTANT 2000:1			
Outline Dwg	A-104965-525			
Conn. Diag	A-EE7308T			
Additional Specifications:				
0				
365THFS8036				
EQUIV CKT (OHMS / PHASE)				
R1	R2	X1	X2	Xm
8.0940	5.4810	11.6440	10.3660	301.0400

