

PRODUCT INFORMATION PACKET

Model No: 215THTS8071
Catalog No: Y991
10,1800,TENV,215TC,3/60/230/460
Brake



Regal and Marathon are trademarks of Regal Beloit Corporation or one of its affiliated companies.
©2018 Regal Beloit Corporation, All Rights Reserved. MC017097E





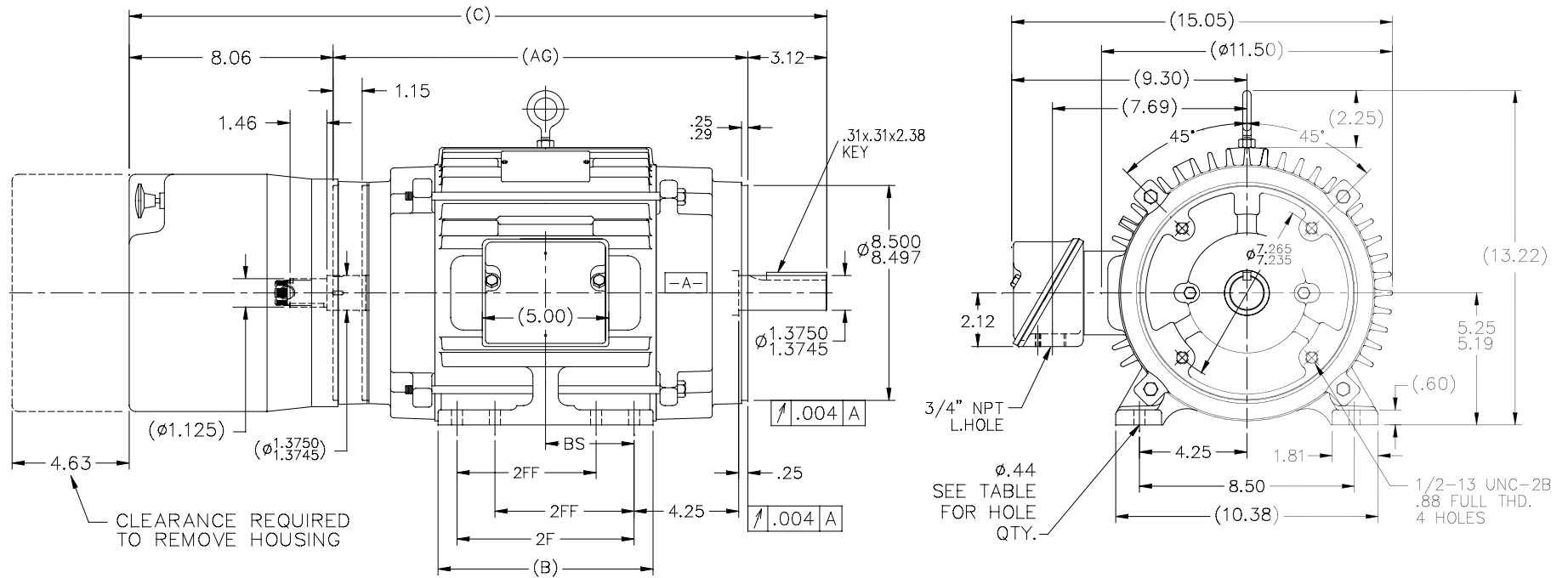
Nameplate Specifications

Output HP	10 Hp	Output KW	7.5 kW
Frequency	60 Hz	Voltage	230/460 V
Current	26/13 A	Speed	1775 rpm
Service Factor	1	Phase	3
Efficiency	91 %	Duty	CONTINUOUS
Insulation Class	F	Design Code	INV
KVA Code	L	Frame	215TC
Enclosure	TENV	Overload Protector	NOT
Ambient Temperature	40 °C	Drive End Bearing Size	6309
Opp Drive End Bearing Size	6307	UL	Recognized
CSA	Y	CE	Y
IP Code	43		

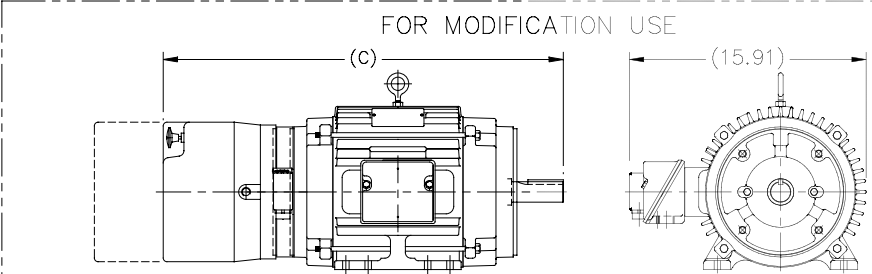
Technical Specifications

Electrical Type	SQ CAGE INV DUTY	Starting Method	INVERTER ONLY
Poles	4	Rotation	REV
Mounting	RIGID	Motor Orientation	HORIZONTAL
Drive End Bearing	BALL	Opp Drive End Bearing	BALL
Frame Material	CAST IRON	Shaft Type	T
Overall Length	28.83 in	Frame Length	10 in
Shaft Diameter	1.38 in	Shaft Extension	3.12 in
Assembly/Box Mounting	F1/F2 CAPABLE		
Outline Drawing	B-SS88470-1000	Connection Diagram	A-EE7308T

This is an uncontrolled document once printed or downloaded and is subject to change without notice. Date Created: 04/05/2018



- NOTES:
1. CONDUIT BOX CAN BE ROTATED IN 90° STEPS.
 2. CONDUIT BOX CAN BE MOUNTED ON OPPOSITE SIDE BY REMOVING BRACKETS AND TURNING FRAME 180°
 3. NAMEPLATE TO BE READ FROM CONDUIT BOX SIDE OF MOTOR



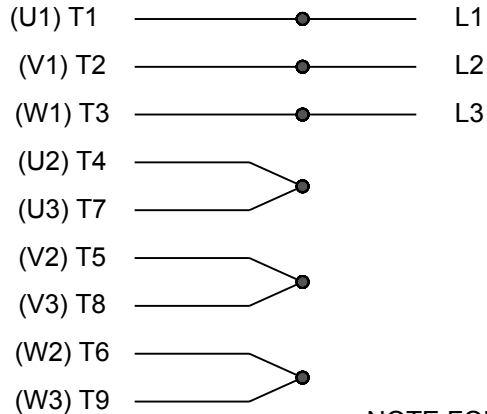
FOR MODIFICATION USE

BRAKE & TACH. INSTALLED AT F1

DASH	FRAME	C	AG	B	2F	2FF	BS	FOOT HOLE QTY.
875	213/5TC	27.58	16.40	8.50	7.00	-	3.50	4
875	213/5TC	27.58	16.40	8.50	7.00	5.50	3.50	8
1000	213/5TC	28.83	17.65	9.75	8.25	7.00	4.75	8

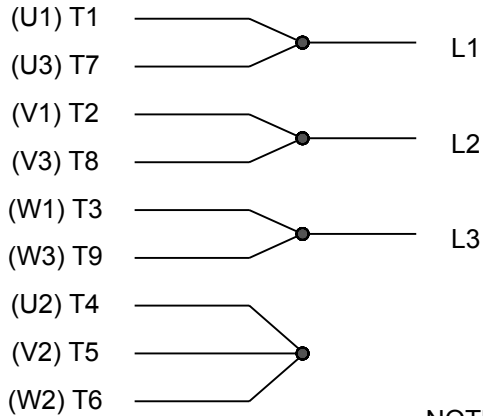
9	NOTES UPDATED PER ECR# 0082550	SAJ 04/13/2015	GR	TOLERANCES UNLESS SPECIFIED		DRAWN DAH 06-18-2001
8	UPDATED DRAWING	TJW 05/04/2007	DEC.	INCHES		CHK DRS 07-02-2001
7	REVISED DASH 1000-FOOTHOLE CN29100-4873	RJW 10-24-2005	ML .X	±.1	TITLE OUTLINE - TENV - LAKESHORE TACH. 210TC FR. - STEARNS 87,000 BRAKE	APPD CAV 07-02-2001
6	REVISED DASH TABLE & FOOT HOLE QTY. CN33822	RJW 05-12-2005	ML .XX	±.03		SCALE 1=4
5	ADDED NOTE NUMBER 4 CN32977	RJW 02-08-2005	ML .XXX	±.005	MAT'L. FINISH	REF
4	ADD NOTE TO DETAIL & SEPARATE CN33633	RWR 10-07-2004	ML .XXXX	±.0005		FMF
NO.	REVISION	BY & DATE	CHK	ANG ±7°30"	PREV	
THIS DRAWING IN DESIGN AND DETAIL IS OUR PROPERTY AND MUST NOT BE USED EXCEPT IN CONNECTION WITH OUR WORK ALL RIGHTS OF DESIGN AND INVENTION ARE RESERVED THIS IS AN ELECTRONICALLY GENERATED DOCUMENT - DO NOT SCALE THIS PRINT			RFP	CAD FILE ss88470	SIZE B	DRAWING NO. SS88470
			DIST LB		PAGE 1 OF 1	REV. 9

HIGH VOLTAGE



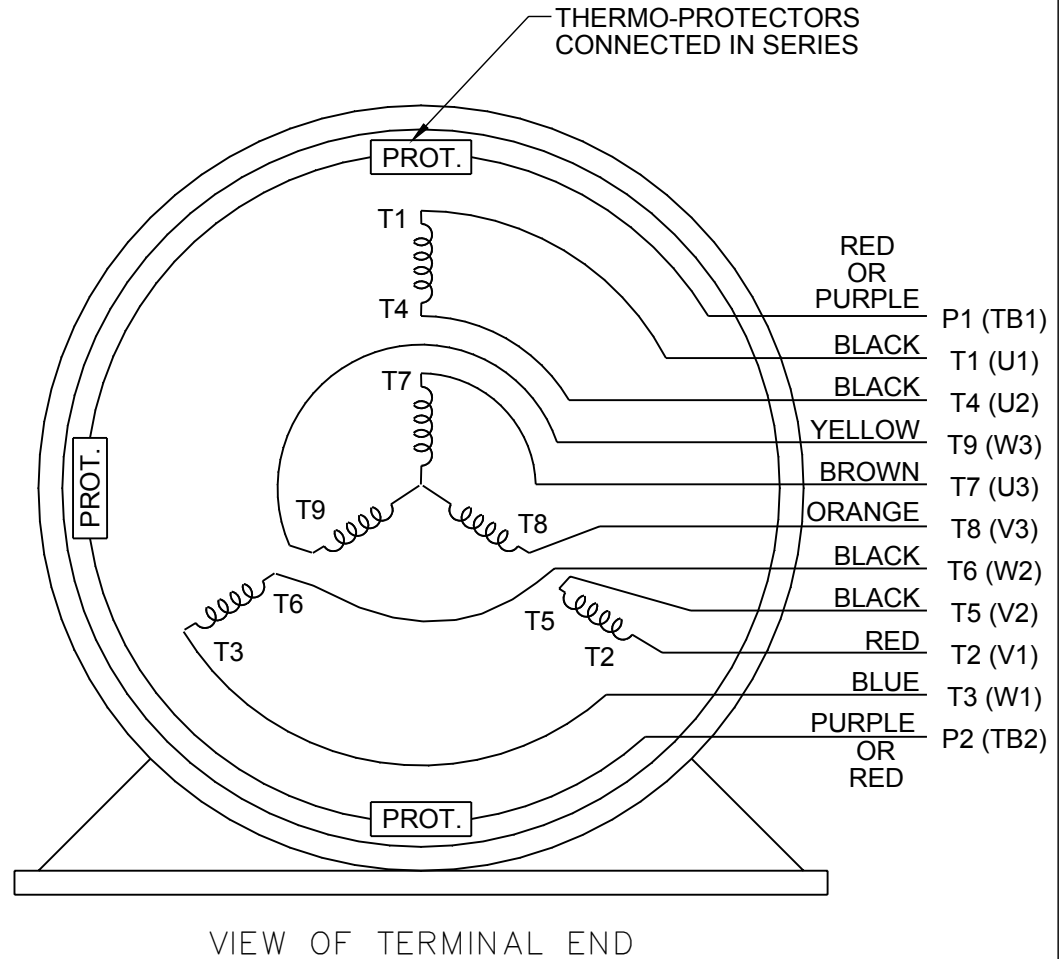
**NOTE FOR FACTORY USE ONLY:
 TO SURGE TEST FOR COMMON CONNECT:
 HIGH VOLT: CONNECT P1 TO T1
 THEN P2 TO L1
 LOW VOLT: CONNECT P1 TO T1 & T7,
 THEN P2 TO L1**

LOW VOLTAGE



NOTE: LEAD'S COLOR CAN BE YELLOW OR WHITE FOR MT2 PLANT

THREE PHASE DUAL VOLTAGE MOTOR



DRAWING REVISION R	REVISION BY AJW	DATE 07-17-2015		DRAWN BY SMC	Regal Beloit America, Inc.
ECO ECO-0081632	APPROVED BY T. VUE	DATE 07-17-2015		DATE 05-13-1992	
ECO DESCRIPTION REV'D IEC NOTATIONS PER IEC 60034-8				APPROVED BY TB	DESCRIPTION CONN DIAGRAM-INTERNAL
<small>COPYRIGHT REGAL BELOIT AMERICA, INC. ALL RIGHTS RESERVED. PROPRIETARY AND CONFIDENTIAL INFORMATION - THIS DOCUMENT IS THE PROPERTY OF REGAL BELOIT AMERICA, INC. ("OWNER") AND CONTAINS OWNER'S PROPRIETARY INFORMATION. ANY PERSON, CORPORATION OR OTHER FIRM RECEIVING IT IS DEEMED, BY RECEIVING IT, TO AGREE THAT IT, AND/OR ANY PART OF IT, SHALL NOT BE DISCLOSED TO ANY PERSON, CORPORATION OR OTHER ENTITY, DUPLICATED, AND/OR USED, EXCEPT AS EXPRESSLY APPROVED IN WRITING IN ADVANCE BY OWNER. THIS DOCUMENT SHALL BE RETURNED TO OWNER UPON REQUEST. IT MAY BE SUBJECT TO CERTAIN RESTRICTIONS UNDER APPLICABLE EXPORT CONTROL LAWS AND REGULATIONS.</small>				DATE 05-13-1992	3 PHASE - DUAL VOLTAGE MOTOR
			REFERENCE EE7308/EE7300	MATERIAL	PROCESS/FINISH
			THIRD ANGLE PROJECTION	SIZE A	DRAWING NUMBER EE7308T

STEARNS	P/N 66378-53
87,000	NEMA 2
50 FT-LB	208-230/460-190/380 V
60/50 Hz	

DATE: 06/22/2017 07:10:41 AM
FORM 3531 REV.3 02/07/99
** Subject to change without notice.

