

PRODUCT INFORMATION PACKET

Model No: 364TTFS9234
Catalog No: Y389
50,1800/900,TEFC,364T,3/60/460
Other Purpose



Regal and Marathon are trademarks of Regal Beloit Corporation or one of its affiliated companies.
©2018 Regal Beloit Corporation, All Rights Reserved. MC017097E





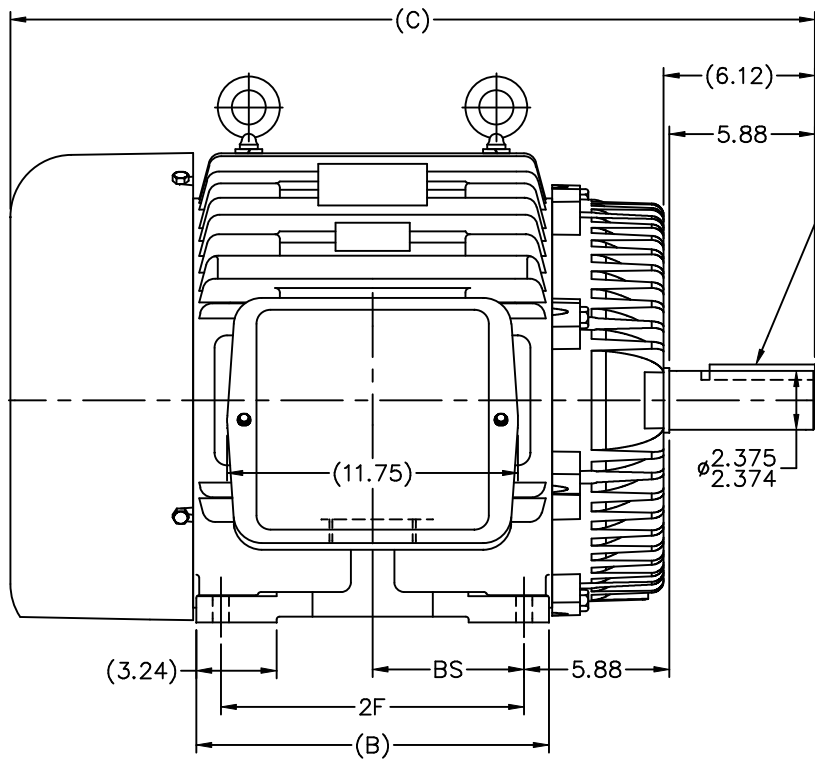
Nameplate Specifications

Output HP	50,12.5 Hp	Output KW	37 kW
Frequency	60 Hz	Voltage	460 V
Current	61,24 A	Speed	1775,890 rpm
Service Factor	1.15	Phase	3
Efficiency	92.4 %	Duty	CONTINUOUS
Insulation Class	F	Design Code	1VT
KVA Code	H	Frame	364T
Enclosure	TEFC	Overload Protector	NOT
Ambient Temperature	40 °C	Drive End Bearing Size	6314
Opp Drive End Bearing Size	6312	UL	Recognized
CSA	Y	CE	Y
IP Code	55		

Technical Specifications

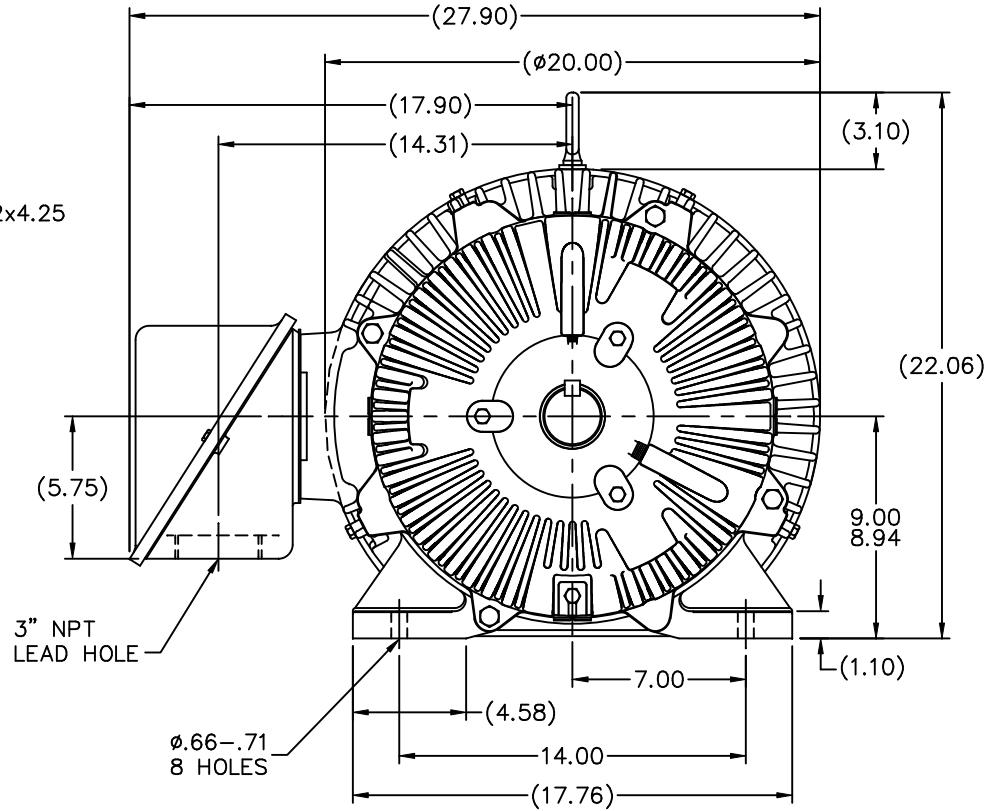
Electrical Type	SQ CAGE IND RUN	Starting Method	ACROSS THE LINE
Poles	4/8	Rotation	REV
Mounting	RIGID	Motor Orientation	HORIZONTAL
Drive End Bearing	BALL	Opp Drive End Bearing	BALL
Frame Material	CAST IRON	Shaft Type	T
Overall Length	31.51 in	Frame Length	13.5 in
Shaft Diameter	2.38 in	Shaft Extension	6.12 in
Assembly/Box Mounting	F1/F2 CAPABLE		
Outline Drawing	B-SS518180-1350	Connection Diagram	A-EE7322

This is an uncontrolled document once printed or downloaded and is subject to change without notice. Date Created: 04/05/2018



.62x.62x4.25
KEY

2.375
2.374

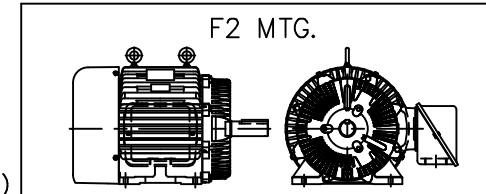


3" NPT
LEAD HOLE

ø.66-.71
8 HOLES

NOTES:

1. CONDUIT BOX CAN BE ROTATED IN 90° STEPS.
2. CONDUIT BOX CAN BE MOUNTED ON OPPOSITE SIDE BY REMOVING BRACKETS AND TURNING FRAME 180°.
3. NAMEPLATE TO BE READ FROM CONDUIT BOX SIDE OF MOTOR



(B-SS508590)

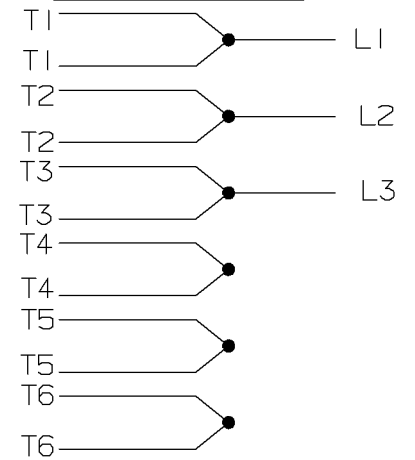
DASH	FRAME	B	C	2F	BS
1350	364T	13.25	31.50	11.25	5.62
1450	365T	14.25	32.50	12.25	6.12

				TOLERANCES UNLESS SPECIFIED		MARATHON ELECTRIC		DRAWN DMT 01-23-2001						
				DEC.	INCHES			CHK	JHL 01-23-2001					
				.X	±.1			APPD	JES 01-23-2001					
				.XX	±.03	TITLE OUTLINE - TEFC/CEE		SCALE 1=5						
2 REDRAWN IN AUTOCAD				TAT	07-06-2004	ML	.XXX ±.005	360T FR. - TAPPED LEAD HOLE - (STD)						
1 NEW DRAWING - DEV. ENG. CN 30253				DMT	01-23-2001		.XXXX ±.0005	REF						
NO.	REVISION			BY & DATE	CHK	ANG	FINISH	FMF						
						±7'30"		PREV						
THIS DRAWING IN DESIGN AND DETAIL IS OUR PROPERTY AND MUST NOT BE USED EXCEPT IN CONNECTION WITH OUR WORK ALL RIGHTS OF DESIGN AND INVENTION ARE RESERVED THIS IS AN ELECTRONICALLY GENERATED DOCUMENT - DO NOT SCALE THIS PRINT								RFP	CAD FILE ss518180	SIZE	DRAWING NO.	PAGE	OF	REV.
										B	SS518180			2

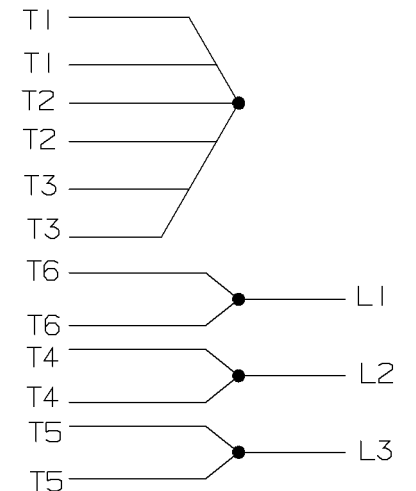
A- EE7322

FOR DUAL LEADS

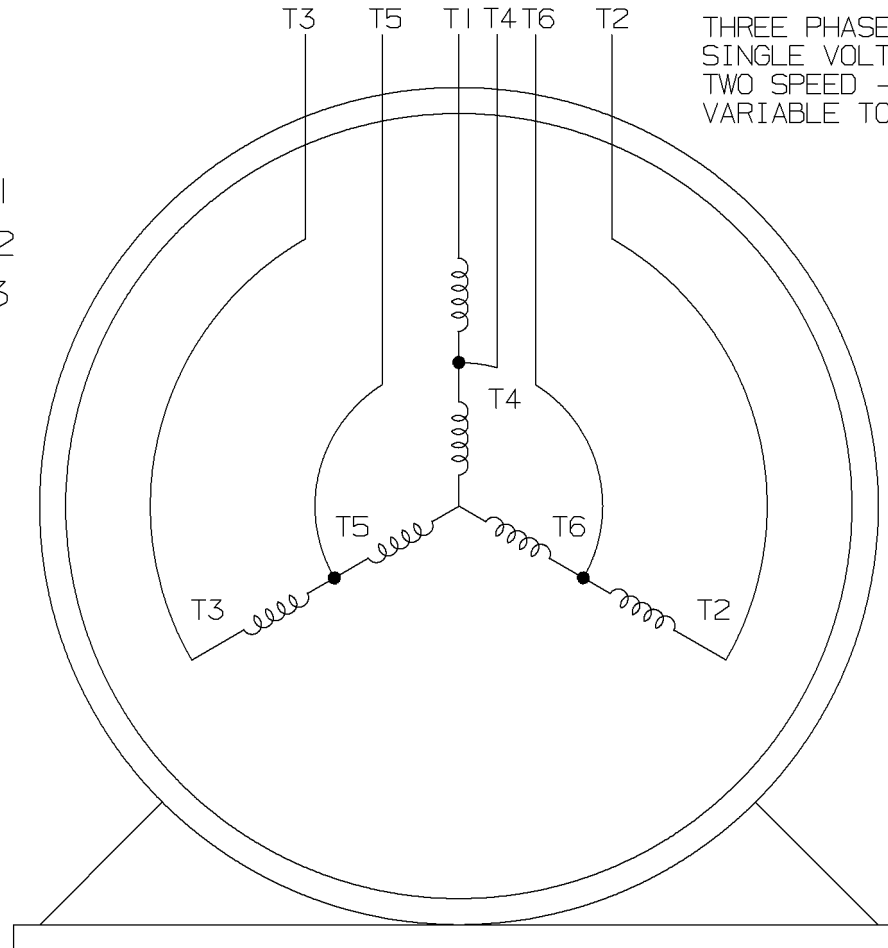
LOW SPEED



HIGH SPEED

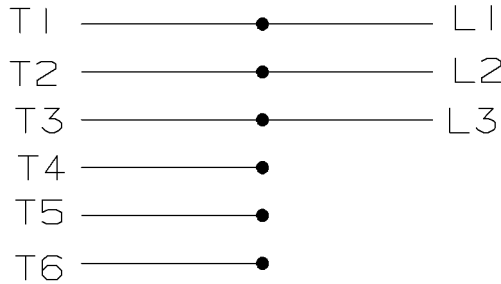


THREE PHASE MOTOR
SINGLE VOLTAGE
TWO SPEED - SGL. WDG.
VARIABLE TORQUE

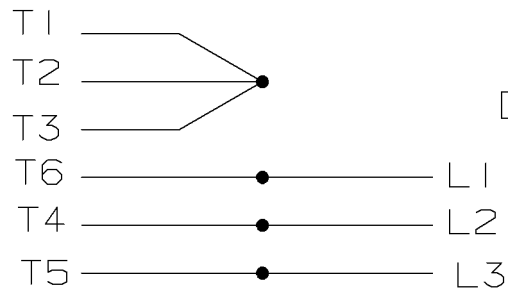


VIEW OF TERMINAL END

LOW SPEED



HIGH SPEED



T612C

T48B

				<input checked="" type="checkbox"/> MAX. SURFACE ROUGHNESS UNLESS NOTED OTHERWISE	UNLESS OTHERWISE SPECIFIED DIMENSIONS ARE IN INCHES TOL. ON XX± XXX±.005 XXXX±.0005 ANGLES±		
				MATL SPEC			DRAWN BY PGK 12-26-1996
				FINISH			CHKD BY ML 01-07-1997
7	01-08-1997	REDRAWN ON CADD	CN 24000-27	PGK	REFERENCE DRW.	WAUSAU, WISCONSIN 54401 	APPD BY TB 01-07-1997
REV	DATE	CHANGE	NAME	PART NAME CONNECTION DIAGRAM 3Ø - SINGLE VOLTAGE - 2 SPEED			DRWG NO A- EE7322

SHOP BOOK

PURCHASED

DISTRIBUTION - WA - LB - WP - LM - BR

CADD FILE NO.

EE7322

