

PRODUCT INFORMATION PACKET

Model No: 284TTFCA6028
Catalog No: GT1228
25,1800,TEFC,284TC,3/60/208-230/460
Totally Enclosed Fan Cooled (TEFC)



Regal and Marathon are trademarks of Regal Beloit Corporation or one of its affiliated companies.
©2018 Regal Beloit Corporation, All Rights Reserved. MC017097E



Nameplate Specifications

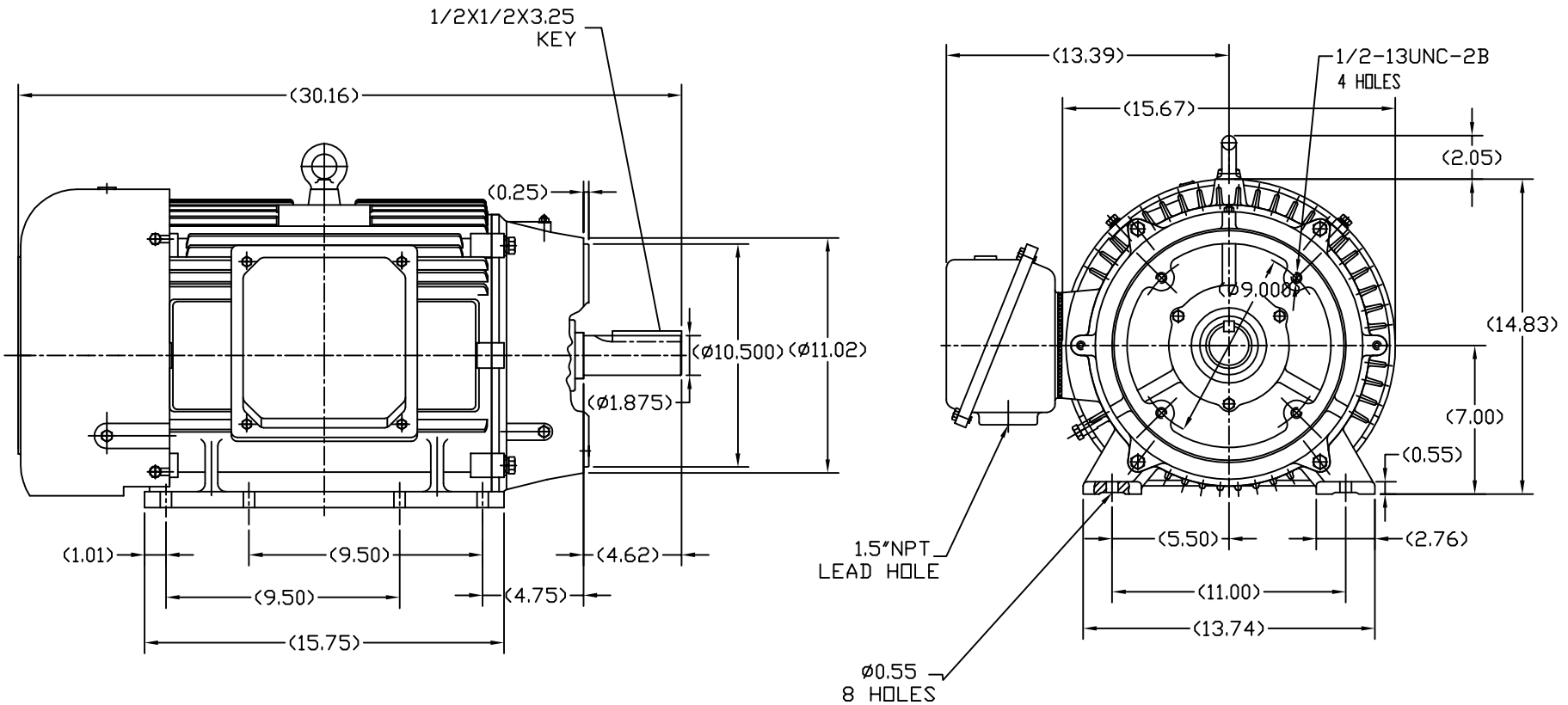
| | | | |
|----------------------------|------------------|------------------------|-------------------|
| Output HP | 25 Hp | Output KW | 18.7 kW |
| Frequency | 60 Hz | Voltage | 230/460 V |
| Current | 61/30.5 A | Speed | 1780 rpm |
| Service Factor | 1.15 | Phase | 3 |
| Efficiency | 93.6 % | Duty | CONTINUOUS |
| Insulation Class | F | Design Code | B |
| KVA Code | G | Frame | 284TC |
| Enclosure | TEFC | Overload Protector | NOT |
| Ambient Temperature | 40 °C | Drive End Bearing Size | 6311 |
| Opp Drive End Bearing Size | 6210 | UL | Recognized |
| CSA | Y | CE | Y |
| IP Code | 43 | | |

Technical Specifications

| | | | |
|-------------------|------------------------|-----------------------|------------------------|
| Electrical Type | SQ CAGE IND RUN | Starting Method | ACROSS THE LINE |
| Poles | 4 | Rotation | REV |
| Mounting | RIGID | Motor Orientation | HORIZONTAL |
| Drive End Bearing | BALL | Opp Drive End Bearing | BALL |
| Frame Material | CAST IRON | Shaft Type | T |
| Overall Length | 30.16 in | Shaft Diameter | 1.88 in |
| Shaft Extension | 4.62 in | Assembly/Box Mounting | F1/F2 CAPABLE |
| Outline Drawing | B-SS620299 | Connection Diagram | A-EE7308AA |

This is an uncontrolled document once printed or downloaded and is subject to change without notice. Date Created: 04/06/2018

SS620299



DRAWING MAY NOT BE TO SCALE

| | | | |
|-------|-------|-------|-------|
| 284TC | 30.16 | 15.75 | 9.50 |
| 286TC | 31.34 | 16.93 | 11.00 |
| FRAME | C | B | 2F |

| | | TOLERANCES UNLESS SPECIFIED | | REGAL-BELOIT CORPORATION | | DRAWN SY 4-21-2010 | |
|--|----------|-----------------------------|--------|-----------------------------|----------|--------------------|------------------|
| | | DEC. | INCHES | REGAL-BELOIT CORPORATION | | CHK HZJ 4-21-2010 | |
| | | .X | ±.1 | | | APPD CL 4-21-2010 | |
| | | .XX | ±.03 | TITLE | | SCALE 2=13 | |
| | | .XXX | ±.005 | 284/286TC FR-TEFC-CAST IRON | | REF | |
| | | .XXXX | ±.0005 | MAT'L | | FMF HWADA | |
| ND. | REVISION | BY & DATE | CHK | ANG | FINISH | PREV | |
| THIS DRAWING IN DESIGN AND DETAIL IS OUR PROPERTY AND MUST NOT BE USED EXCEPT IN CONNECTION WITH OUR WORK ALL RIGHTS OF DESIGN AND INVENTION ARE RESERVED THIS IS AN ELECTRONICALLY GENERATED DOCUMENT - DO NOT SCALE THIS PRINT | | | | RFP | CAD FILE | SS620299 | SIZE DRAWING NO. |
| | | | | DIST | | | B SS620299 |
| | | | | | | | REV. |



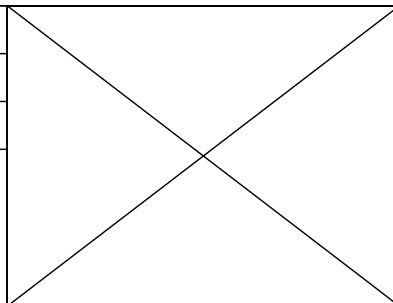
LOW VOLTAGE



HIGH VOLTAGE



| | | |
|--|------------------------------|---------------------------|
| DRAWING REVISION K | REVISION BY AJW | DATE 07-17-2015 |
| ECO ECO-0081632 | APPROVED BY T. VUE | DATE 07-17-2015 |
| ECO DESCRIPTION REV'D IEC MARKINGS PER IEC 60034-8 | | |
| COPYRIGHT REGAL BELOIT AMERICA, INC. ALL RIGHTS RESERVED. PROPRIETARY AND CONFIDENTIAL INFORMATION - THIS DOCUMENT IS THE PROPERTY OF REGAL BELOIT AMERICA, INC. ("OWNER") AND CONTAINS OWNER'S PROPRIETARY INFORMATION. ANY PERSON, CORPORATION OR OTHER FIRM RECEIVING IT IS DEEMED, BY RECEIVING IT, TO AGREE THAT IT, AND/OR ANY PART OF IT, SHALL NOT BE DISCLOSED TO ANY PERSON, CORPORATION OR OTHER ENTITY, DUPLICATED, AND/OR USED, EXCEPT AS EXPRESSLY APPROVED IN WRITING IN ADVANCE BY OWNER. THIS DOCUMENT SHALL BE RETURNED TO OWNER UPON REQUEST. IT MAY BE SUBJECT TO CERTAIN RESTRICTIONS UNDER APPLICABLE EXPORT CONTROL LAWS AND REGULATIONS. | | |



| | | |
|---------------------------|---|-----------------------------------|
| DRAWN BY LZ | Regal Beloit America, Inc. | |
| DATE 01-12-1994 | | |
| APPROVED BY GK | DESCRIPTION CONN DIAGRAM-EXTERNAL 3Ø-2/1 DELTA-12 LEADS | |
| DATE 01-14-1994 | | |
| REFERENCE | MATERIAL | PROCESS/FINISH |
| THIRD ANGLE PROJECTION | SIZE A | DRAWING NUMBER EE7308AA |
| | | SHEET 1 OF 1 |

CERTIFICATION DATA SHEET

Model#: 284TTFCA6028 AA **WINDING#:** CHT28440001 NONE 1
CONN. DIAGRAM: A-EE7308AA **ASSEMBLY:** F1/F2 CAPABLE
OUTLINE: B-SS620299

TYPICAL MOTOR PERFORMANCE DATA

| HP | KW | SYNC. RPM | F.L. RPM | FRAME | ENCLOSURE | KVA CODE | DESIGN |
|-------|-----------|-----------|-----------|-------|-----------|----------|--------|
| 25&20 | 18.7&14.9 | 1800 | 1780&1478 | 284TC | TEFC | G | B |

| PH | Hz | VOLTS | FL AMPS | START TYPE | DUTY | INSL | S.F | AMB°C | ELEVATION |
|----|-------|---------------------|---------------|--------------------|----------------|------|----------|-------|-----------|
| 3 | 60/50 | 230/460#190/ 380 | 61/30.5&60/30 | ACROSS THE LINE | CONTINUOU S | F7 | 1.15/1.0 | 40 | 3300 |

| FULL LOAD EFF: 93.6&93.6 | 3/4 LOAD EFF: 93.6 | 1/2 LOAD EFF: 93 | GTD. EFF | ELEC. TYPE | NO LOAD AMPS |
|-----------------------------|--------------------|------------------|----------|-----------------|--------------|
| FULL LOAD PF: 81&81 | 3/4 LOAD PF: 77 | 1/2 LOAD PF: 67 | 93 | SQ CAGE IND RUN | 25 / 12.5 |

| F.L. TORQUE | LOCKED ROTOR AMPS | L.R. TORQUE | B.D. TORQUE | F.L. RISE°C |
|-------------|-------------------|---------------|---------------|-------------|
| 73.8 LB-FT | 350 / 175 | 133 LB-FT 180 | 193 LB-FT 260 | 50 |

| SOUND PRESSURE @ 3 FT. | SOUND POWER | ROTOR WK^2 | MAX. WK^2 | SAFE STALL TIME | STARTS /HOUR | APPROX. MOTOR WGT |
|---------------------------|-------------|-------------|-------------|-----------------|-----------------|----------------------|
| 75 dBA | 85 dBA | 5.2 LB-FT^2 | 175 LB-FT^2 | 20 SEC. | 2 | 575 LBS. |

***** SUPPLEMENTAL INFORMATION *****

| DE BRACKET TYPE | ODE BRACKET TYPE | MOUNT TYPE | ORIENTATION | SEVERE DUTY | HAZARDOUS LOCATION | DRIP COVER | SCREENS | PAINT |
|--------------------|---------------------|---------------|-------------|----------------|-----------------------|---------------|---------|------------------|
| C-FACE | STANDARD | RIGID | HORIZONTAL | FALSE | NONE | FALSE | NONE | BLUE (ENAMEL) |

| BEARINGS | | GREASE | SHAFT TYPE | SPECIAL DE | SPECIAL ODE | SHAFT MATERIAL | FRAME MATERIAL |
|----------|------|------------|------------|------------|-------------|----------------------------|-------------------|
| DE | OPE | POLYREX EM | T | NONE | NONE | 1045 HOT ROLLED (C-204) | CAST IRON |
| BALL | BALL | | | | | | |
| 6311 | 6210 | | | | | | |

| THERMO-PROTECTORS | | | | THERMISTORS | CONTROL | SPACE /n HEATERS |
|-------------------|------------|----------|----------|-------------|---------|------------------|
| THERMOSTATS | PROTECTORS | WDG RTDs | BRG RTDs | NONE | FALSE | NONE VOLTS |
| NONE | NOT | NONE | NONE | | | |

If Inverter equals NONE, contact factory for further information

*
N
O
T
E
S
*

| |
|---------------------------|
| INVERTER TORQUE: NONE |
| INV. HP SPEED RANGE: NONE |
| ENCODER: NONE |
| NONE NONE |
| NONE NONE PPR |
| BRAKE: NONE NONE |
| NONE P/N NONE |
| NONE NONE |
| NONE FT-LB NONE V NONE Hz |

DATE: 06/21/2017 09:43:02 AM
 FORM 3531 REV.3 02/07/99
 ** Subject to change without notice.

