

PRODUCT INFORMATION PACKET

Model No: 182TTDW6076
Catalog No: U1266
1 1/2, 1200, DP, 182T, 3/60/230/460
Open Drip Proof (ODP)



Regal and Marathon are trademarks of Regal Beloit Corporation or one of its affiliated companies.
©2018 Regal Beloit Corporation, All Rights Reserved. MC017097E





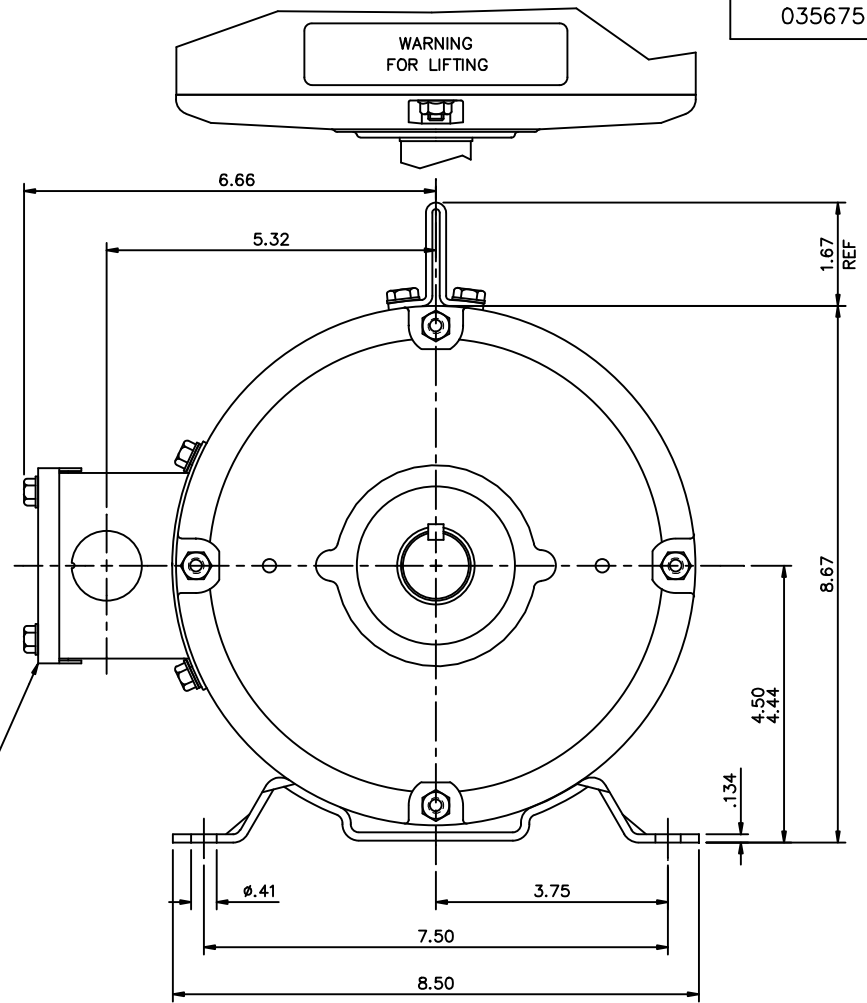
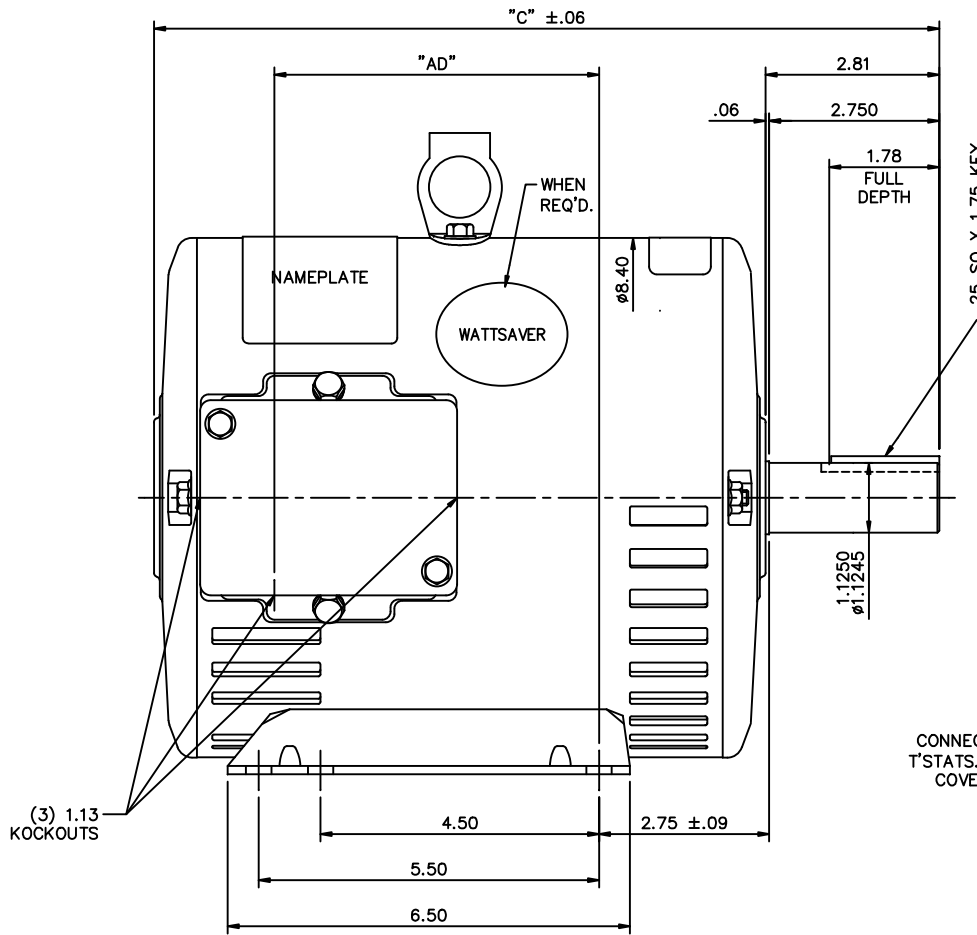
Nameplate Specifications

Output HP	1.5 Hp	Output KW	1.12 kW
Frequency	60 Hz	Voltage	230/460 V
Current	6.2/3.1 A	Speed	1170 rpm
Service Factor	1.15	Phase	3
Efficiency	86.5 %	Duty	CONTINUOUS
Insulation Class	F	Design Code	B
KVA Code	K	Frame	182T
Enclosure	DP	Overload Protector	NOT
Ambient Temperature	40 °C	Drive End Bearing Size	6206
Opp Drive End Bearing Size	6205	UL	Recognized
CSA	Y	CE	Y
IP Code	22		

Technical Specifications

Electrical Type	SQ CAGE IND RUN	Starting Method	ACROSS THE LINE
Poles	6	Rotation	REV
Mounting	RIGID	Motor Orientation	HORIZONTAL
Drive End Bearing	BALL	Opp Drive End Bearing	BALL
Frame Material	ROLLED STEEL	Shaft Type	T
Overall Length	13.19 in	Frame Length	9 in
Shaft Diameter	1.13 in	Shaft Extension	2.81 in
Assembly/Box Mounting	F1 ONLY		
Outline Drawing	035675-900	Connection Diagram	005010.20ME


This is an uncontrolled document once printed or downloaded and is subject to change without notice. Date Created: 04/05/2018



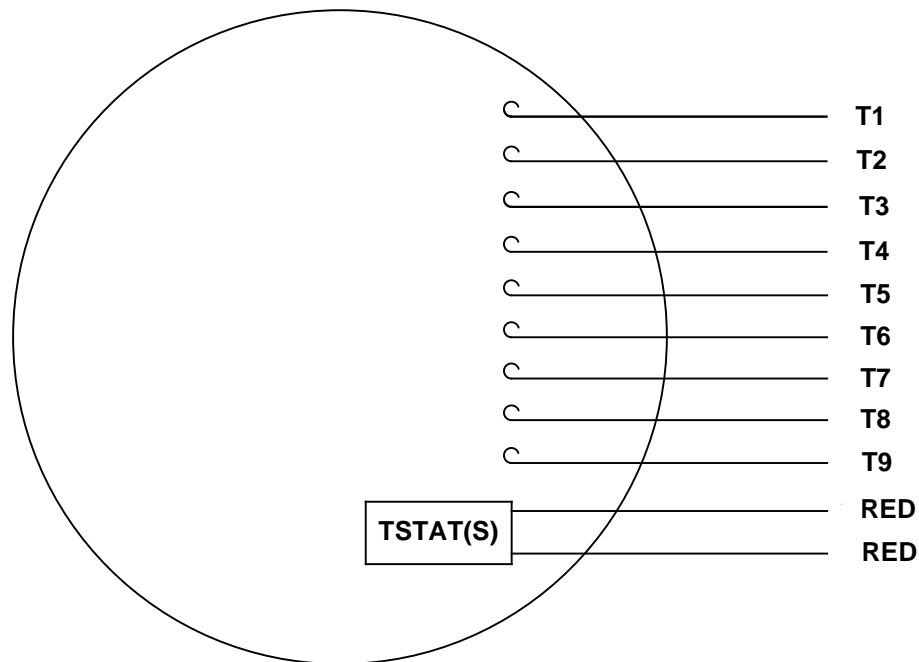
DECAL CONNECTION & T'STATS. UNDER COVER WHEN REQ'D.

GASKETS THROUGHOUT

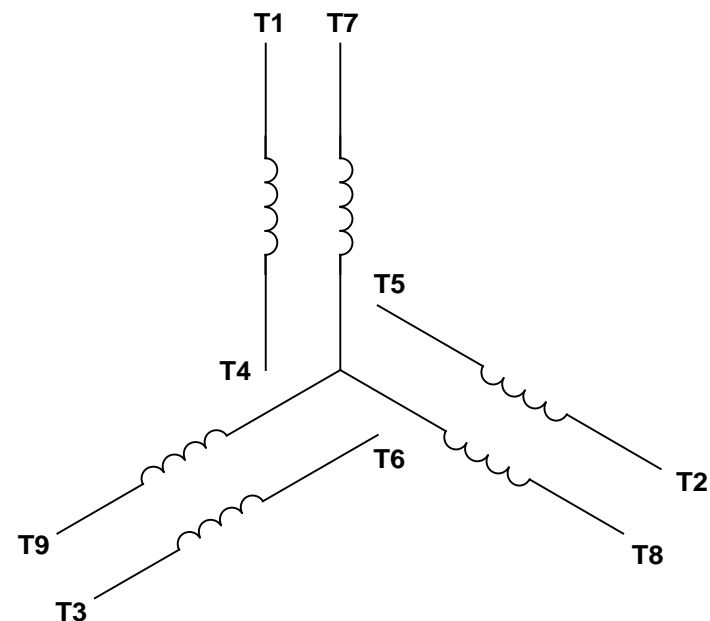
DASH NO.	"C"	"AD"
850	12.69	5.25
900	13.19	5.75
950	13.69	6.25
1000	14.19	6.75
1050	14.69	7.25
1100	15.19	7.75
1150	15.69	8.25
1200	16.19	8.75

REVISION				BY & DATE		TOLERANCES UNLESS SPECIFIED		 ELECTRIC MOTORS GEARMOTORS AND DRIVES	DRAWN GRB 05-08-2008			
NO.	DESCRIPTION	CHK	ANG	BY	DATE	DEC.	INCHES		SCALE	REV.		
01	ADDED DECAL 081102.01,ISAAC 09-0107	KA	1/28/09			.X	±.1		CHK	YS 05-08-2008		
						.XX	±.03	TITLE	APPD	YS 05-08-2008		
						.XXX	±.005	OUTLINE - 180T FRAME DRIP PROOF - RIGID	SCALE	1=2		
						.XXXX	±.0005	MAT'L	REF	035455		
								FINISH	FMF			
								WATSAVER	PREV			
THIS DRAWING IN DESIGN AND DETAIL IS OUR PROPERTY AND MUST NOT BE USED EXCEPT IN CONNECTION WITH OUR WORK ALL RIGHTS OF DESIGN AND INVENTION ARE RESERVED THIS IS AN ELECTRONICALLY GENERATED DOCUMENT - DO NOT SCALE THIS PRINT						RFP	05-08-2008	CAD FILE	035675	SIZE	DRAWING NO.	REV.
						DIST	NLV		B	035675		

VIEW FROM OUTSIDE OF MOTOR AT SWITCH END.



LINE LEADS



VOLTAGE	L1	L2	L3	JOIN & INSULATE
HIGH	T1	T2	T3	(T4, T7) (T5, T8) (T6, T9)
LOW	T1, T7	T2, T8	T3, T9	T4, T5, T6

RBC PROPRIETARY AND CONFIDENTIAL INFORMATION
 This document is the property of REGAL BELOIT CORPORATION ("RBC") including its subsidiaries and divisions and contains proprietary information of RBC. This document is loaned on the express condition that neither it nor the information contained therein shall be disclosed to others without the express written consent of RBC, and that the information shall be used by the recipient only as approved expressly by RBC. This document shall be returned to RBC upon its request. This document may be subject to certain restrictions under U.S. export control laws and regulations.

		TOLERANCES UNLESS SPECIFIED				DRAWN RDW 04/13/04	
		DEC	INCHES			CHK	
		.X	±.1			APPR	
		.XX	±.01			SCALE 1:1	
			.XXX	±.005	TITLE EXTERNAL WIRING DIAGRAM		REF
			.XXX	±.0005	3 PHASE		
--	REDRAWN IN SOLIDWORKS	VJB 02/08/11			MAT'L DECAL - 004014 (TSTAT) - 080582	FMF 129027	
NO	REVISION	BY & DATE	CHK	ANG ±1/2°	FINISH	PAGE OF	
THIRD ANGLE PROJECTION			RFP	PREV	SIZE	DRAWING NO	REV
			NETWORK FILE NAME 00501020ME		A	005010-20ME	--

CERTIFICATION DATA SHEET

Model#: 182TTDW6076 AA **WINDING#:** T8635 DR 3
CONN. DIAGRAM: 005010.20ME **ASSEMBLY:** F1 ONLY
OUTLINE: 035675-900

TYPICAL MOTOR PERFORMANCE DATA

HP	KW	SYNC. RPM	F.L. RPM	FRAME	ENCLOSURE	KVA CODE	DESIGN
1 1/2&1	1.12&.75	1200	1170&985	182T	DP	K	B

PH	Hz	VOLTS	FL AMPS	START TYPE	DUTY	INSL	S.F	AMB°C	ELEVATION
3	60/50	230/460#190/ 380	6.2/3.1&4.8/2. 4	ACROSS THE LINE	CONTINUOU S	F4	1.15/1.0	40	3300

FULL LOAD EFF: 86.5&81.2	3/4 LOAD EFF: 84.8	1/2 LOAD EFF: 81.4	GTD. EFF	ELEC. TYPE	NO LOAD AMPS
FULL LOAD PF: 60&48.3	3/4 LOAD PF: 53.4	1/2 LOAD PF: 41.6	0	SQ CAGE IND RUN	3.6 / 1.8

F.L. TORQUE	LOCKED ROTOR AMPS	L.R. TORQUE	B.D. TORQUE	F.L. RISE°C
6.68 LB-FT	34.8 / 17.4	13.73 LB-FT 205	24.78 LB-FT 370	0

SOUND PRESSURE @ 3 FT.	SOUND POWER	ROTOR WK^2	MAX. WK^2	SAFE STALL TIME	STARTS /HOUR	APPROX. MOTOR WGT
0 dBA	10 dBA	0.51 LB-FT^2	0 LB-FT^2	10 SEC.	0	0 LBS.

***** SUPPLEMENTAL INFORMATION *****

DE BRACKET TYPE	ODE BRACKET TYPE	MOUNT TYPE	ORIENTATION	SEVERE DUTY	HAZARDOUS LOCATION	DRIP COVER	SCREENS	PAINT
STANDARD	STANDARD	RIGID	HORIZONTAL	FALSE	NONE	FALSE	NONE	BLUE (ENAMEL)

BEARINGS		GREASE	SHAFT TYPE	SPECIAL DE	SPECIAL ODE	SHAFT MATERIAL	FRAME MATERIAL
DE	OPE						
BALL	BALL	POLYREX EM	T	NONE	NONE	AISI 1045 (C-240)	ROLLED STEEL
6206	6205						

THERMO-PROTECTORS				THERMISTORS	CONTROL	SPACE /n HEATERS
THERMOSTATS	PROTECTORS	WDG RTDs	BRG RTDs			
TSTATS (N/C)	NOT	NONE	NONE	NONE	FALSE	NONE VOLTS

If Inverter equals NONE, contact factory for further information

INVERTER TORQUE: NONE
INV. HP SPEED RANGE: NONE
ENCODER: NONE
NONE NONE
NONE NONE PPR
BRAKE: NONE NONE
NONE P/N NONE
NONE NONE
NONE FT-LB NONE V NONE Hz

*
N
O
T
E
S
*

DATE: 06/27/2017 01:53:16 AM
 FORM 3531 REV.3 02/07/99

** Subject to change without notice.

Data Sheet

Date: 20-06-2017
 Customer: _____
 Attention: _____
 Submitted by: FAREEDA DUDEKULA



182TTDW6076

Submittal

Data @ 460 V

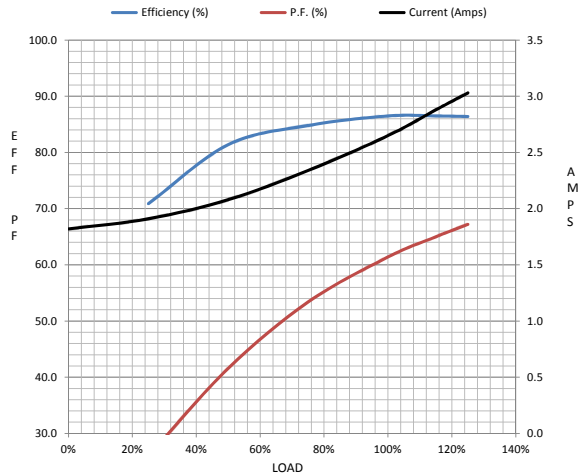
Motor Load Data

Load	0%	25%	50%	75%	100%	115%	125%	LR
Current (Amps)	1.82	1.91	2.08	2.34	2.65	2.88	3.0	17.4
Torque (ft-lb)	0.00	1.65	3.3	5.0	6.7	7.7	8.4	13.7
RPM	1200	1195	1190	1184	1170	1,175	1172	0
Efficiency (%)		70.9	81.4	84.8	86.5	86.5	86.4	
P.F. (%)	7.5	26.0	41.6	53.4	61.4	65.0	67.2	0.0

Motor Speed Data

	LR	Pull-Up	BD	Rated	Idle
Speed (RPM)	0	193	1021	1170	1200
Current (Amps)	17.4	16.2	8.4	2.65	1.82
Torque (ft-lb)	13.7	13.5	24.8	6.7	0.00

Information Block				
HP	1.5			
Sync. RPM	1200			
Frame	180			
Enclosure	DP			
Construction	TDW			
Voltage	30/460#190/38V			
Frequency	60 Hz			
Design	B			
LR Code letter	L			
Service Factor	1.15			
Temp Rise @ FL	28 ° C			
Duty	CONT			
Ambient	40 ° C			
Elevation	1,000 feet			
Rotor/Shaft wk ²	0.51 Lb-Ft ²			
Ref Wdg	T8635 DR			
Sound Pressure @ 1M	0 dBA			
VFD Rating	NONE			
Outline Dwg	035675-900			
Conn. Diag	005010.20ME			
Additional Specifications:				
0				
365THFS8036				
EQUIV CKT (OHMS / PHASE)				
R1	R2	X1	X2	Xm
0.0000	0.0000	0.0000	0.0000	0.0000



Speed -Torque Curve

