

PRODUCT INFORMATION PACKET

marathon[®]
Motors

Model No: 447TTDN16046
Catalog No: U786
250,1800,DP,447T,3/60/460
Open Drip Proof (ODP)



Regal and Marathon are trademarks of Regal Beloit Corporation or one of its affiliated companies.
©2018 Regal Beloit Corporation, All Rights Reserved. MC017097E

REGAL[®]



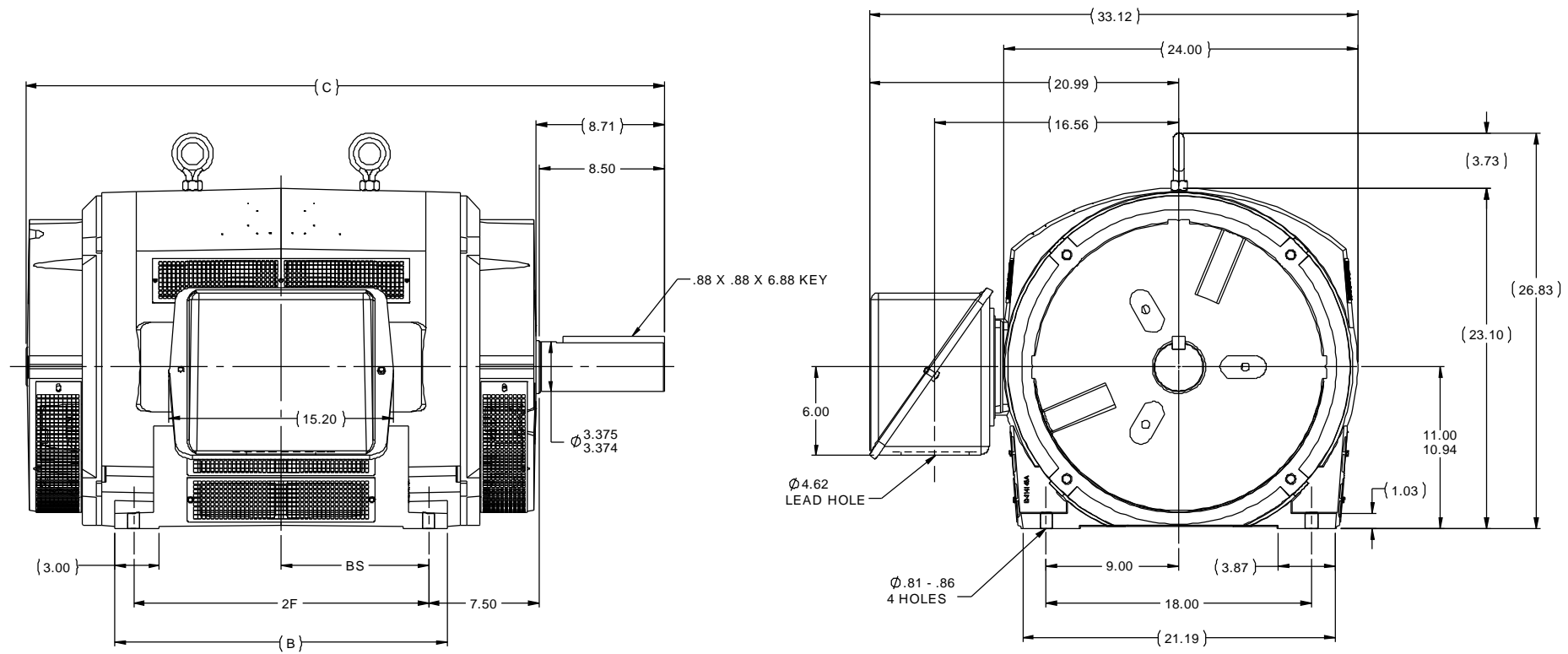
Nameplate Specifications

Output HP	250 Hp	Output KW	187 kW
Frequency	60 Hz	Voltage	460 V
Current	284 A	Speed	1782 rpm
Service Factor	1.15	Phase	3
Efficiency	95.8 %	Duty	CONTINUOUS
Insulation Class	F	Design Code	B
KVA Code	F	Frame	447T
Enclosure	DP	Overload Protector	NOT
Ambient Temperature	40 °C	Drive End Bearing Size	6318
Opp Drive End Bearing Size	6314	UL	Recognized
CSA	Y	CE	Y
IP Code	12		

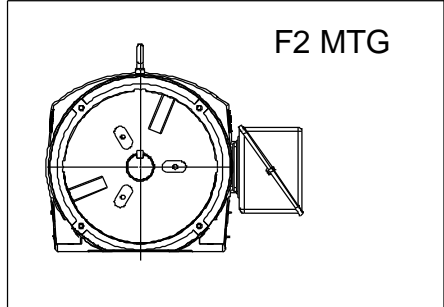
Technical Specifications

Electrical Type	SQ CAGE IND RUN	Starting Method	PWS & YDRUN
Poles	4	Rotation	REV
Mounting	RIGID	Motor Orientation	HORIZONTAL
Drive End Bearing	BALL	Opp Drive End Bearing	BALL
Frame Material	CAST IRON	Shaft Type	T
Overall Length	43.25 in	Frame Length	24.38 in
Shaft Diameter	3.38 in	Shaft Extension	8.71 in
Assembly/Box Mounting	F1/F2 CAPABLE		
Outline Drawing	B-SS555884-2438	Connection Diagram	A-EE7300CB

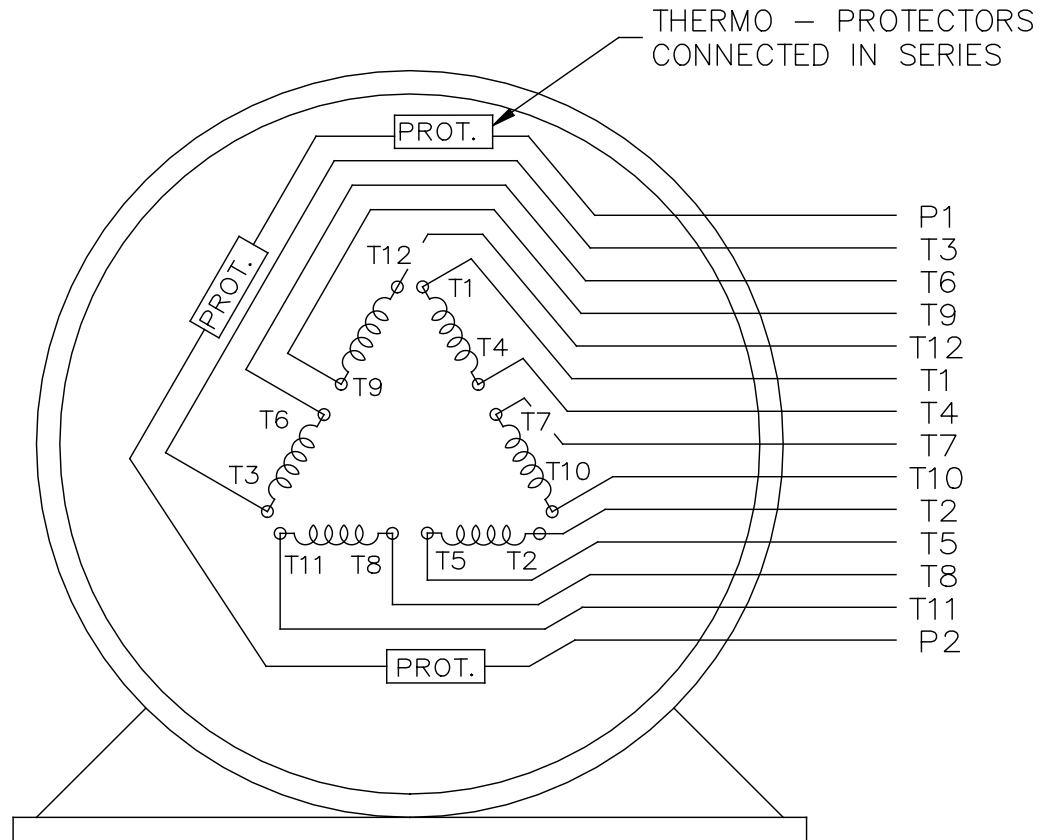
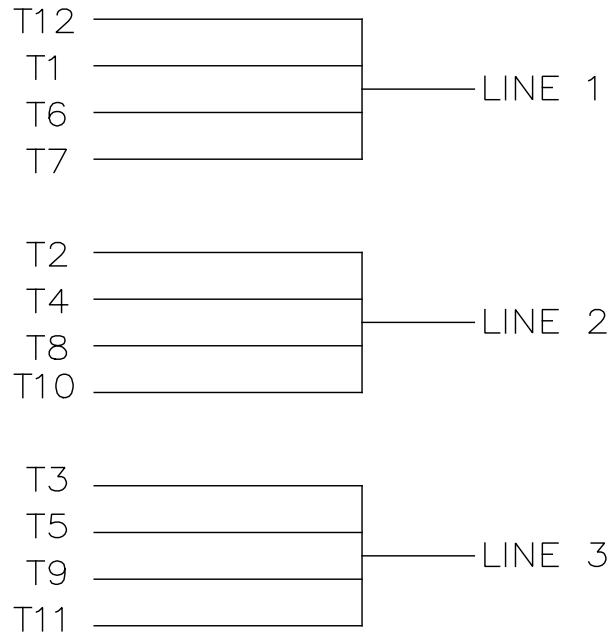
This is an uncontrolled document once printed or downloaded and is subject to change without notice. Date Created: 04/06/2018



- NOTES:
1. CONDUIT BOX CAN BE ROTATED IN 90° STEPS
 2. CONDUIT BOX CAN BE MOUNTED ON OPPOSITE SIDE BY REMOVING BRACKETS AND TURNING FRAME 180°
 3. NAMEPLATES TO BE READ FROM CONDUIT BOX SIDE OF MOTOR



										TOLERANCES UNLESS SPECIFIED		Regal-Beloit Corporation		DRAWN WGJ 09-18-2013		
										DEC INCHES				CHK DD 09-18-2013		
										X ±.1		TITLE OUTLINE - DR. PR. 447 - 449T FR.		APPR DK 09-18-2013		
										XX ±.03				SCALE 1:12		
										XXX ±.005		MATERIAL		REF SS514867		
										XXXX ±.0005				FMF ECO-0038201		
2438	447T	43.25	-----	22.50	20.00	-----	-----	10.00	NO	REVISION	BY & DATE	CHK LANG ±7'30"	FINISH	PAGE	OF	
2938	449T	48.25	-----	27.50	25.00	-----	-----	12.50		THIRD ANGLE PROJECTION		RFP 09-18-2013	PREV	SIZE	DRAWING NO	
DASH	FRAME	C	AG	B	2F	2FF	2FFF	BS				NETWORK FILE NAME	SS555884	B	SS555884	REV



VIEW OF TERMINAL END

				TOLERANCES UNLESS SPECIFIED		REGAL REGAL - BELOIT CORPORATION	DRAWN KL 02-27-2003		
				DEC.	INCHES		CHK GFH 03-03-2003		
				.X	± -		APPD JES 03-03-2003		
				.XX	± -	TITLE CONNECTION DIAGRAM - EXTERNAL	SCALE 1=1		
				.XXX	± -	12 LEAD SINGLE VOLTAGE	REF		
A	CHANGED TO REGAL TITLEBLOCK ECO-0108299	WGJ 08-18-2016	EMH	.XXXX	± -	MAT'L.	FMF		
NO.	REVISION	BY & DATE	CHK	ANG	± -	FINISH	PREV		
THIS DRAWING IN DESIGN AND DETAIL IS OUR PROPERTY AND MUST NOT BE USED EXCEPT IN CONNECTION WITH OUR WORK ALL RIGHTS OF DESIGN AND INVENTION ARE RESERVED THIS IS AN ELECTRONICALLY GENERATED DOCUMENT - DO NOT SCALE THIS PRINT				RFP	CAD FILE EE7300CB		SIZE A	DRAWING NO. EE7300CB	PAGE OF REV.
				DIST					

CERTIFICATION DATA SHEET

Model#: 447TTDN16046 AA **WINDING#:** T447441 NONE 1
CONN. DIAGRAM: A-EE7300CB **ASSEMBLY:** F1/F2 CAPABLE
OUTLINE: B-SS555884-2438

TYPICAL MOTOR PERFORMANCE DATA

HP	KW	SYNC. RPM	F.L. RPM	FRAME	ENCLOSURE	KVA CODE	DESIGN
250	187	1800	1782	447T	DP	F	B

PH	Hz	VOLTS	FL AMPS	START TYPE	DUTY	INSL	S.F	AMB°C	ELEVATION
3	60	460	284	PWS & YDRUN	CONTINUOUS	F1	1.15	40	3300

FULL LOAD EFF: 95.8	3/4 LOAD EFF: 95.8	1/2 LOAD EFF: 95.8	GTD. EFF	ELEC. TYPE	NO LOAD AMPS
FULL LOAD PF: 86	3/4 LOAD PF: 84	1/2 LOAD PF: 78	95.4	SQ CAGE IND RUN	81

F.L. TORQUE	LOCKED ROTOR AMPS	L.R. TORQUE	B.D. TORQUE	F.L. RISE°C
736 LB-FT	1650	1325 LB-FT 180	1550 LB-FT 211	40

SOUND PRESSURE @ 3 FT.	SOUND POWER	ROTOR WK^2	MAX. WK^2	SAFE STALL TIME	STARTS /HOUR	APPROX. MOTOR WGT
82 dBA	92 dBA	61 LB-FT^2	- LB-FT^2	15 SEC.	-	2150 LBS.

***** SUPPLEMENTAL INFORMATION *****

DE BRACKET TYPE	ODE BRACKET TYPE	MOUNT TYPE	ORIENTATION	SEVERE DUTY	HAZARDOUS LOCATION	DRIP COVER	SCREENS	PAINT
STANDARD	STANDARD	RIGID	HORIZONTAL	FALSE	NONE	FALSE	NONE	BLUE (ENAMEL)

BEARINGS		GREASE	SHAFT TYPE	SPECIAL DE	SPECIAL ODE	SHAFT MATERIAL	FRAME MATERIAL
DE	OPE						
BALL	BALL	POLYREX EM	T	NONE	NONE	1045 HOT ROLLED (C-204)	CAST IRON
6318	6314						

THERMO-PROTECTORS				THERMISTORS	CONTROL	SPACE /n HEATERS
THERMOSTATS	PROTECTORS	WDG RTDs	BRG RTDs			
TSTATS (N/C)	NOT	NONE	NONE	NONE	FALSE	NONE VOLTS

If Inverter equals NONE, contact factory for further information

*
N
O
T
E
S
*

INVERTER TORQUE: NONE
INV. HP SPEED RANGE: NONE
ENCODER: NONE
NONE NONE
NONE NONE PPR
BRAKE: NONE NONE
NONE P/N NONE
NONE NONE
NONE FT-LB NONE V NONE Hz

DATE: 06/21/2017 06:28:16 AM
 FORM 3531 REV.3 02/07/99

** Subject to change without notice.

Data Sheet

Date: 29-06-2017
 Customer: _____
 Attention: _____
 Submitted by: FAREEDA DUDEKULA



447TTDN16046

Submittal

Data @ 460 V

Motor Load Data

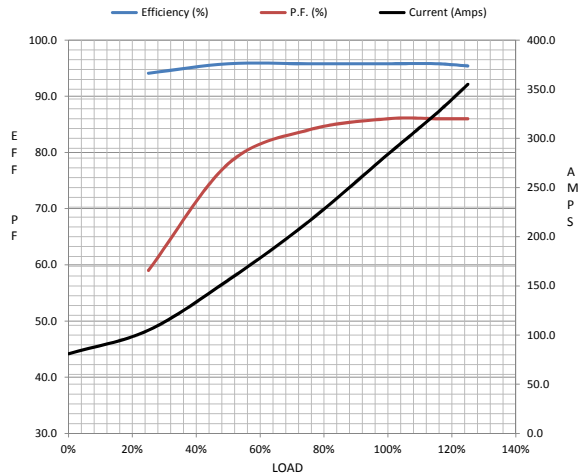
Load	0%	25%	50%	75%	100%	115%	125%	LR
Current (Amps)	81.0	105	156	215	284	325	355	1,650
Torque (ft-lb)	0.00	183	366	551	736	848	925	1,325
RPM	1800	1796	1792	1788	1782	1,780	1778	0
Efficiency (%)		94.1	95.8	95.8	95.8	95.8	95.4	
P.F. (%)	3.5	59.0	78.0	84.0	86.0	86.0	86.0	32.0

Motor Speed Data

	LR	Pull-Up	BD	Rated	Idle
Speed (RPM)	0	900	1725	1782	1800
Current (Amps)	1,650	1,500	875	284	81.0
Torque (ft-lb)	1,325	1,200	1,550	736	0.00

Information Block

HP	250.0			
Sync. RPM	1800			
Frame	447			
Enclosure	DP			
Construction	TDN			
Voltage	460 V			
Frequency	60 Hz			
Design	B			
LR Code letter	F			
Service Factor	1.15			
Temp Rise @ FL	40 ° C			
Duty	CONT			
Ambient	40 ° C			
Elevation	1,000 feet			
Rotor/Shaft wk ²	61.0 Lb-Ft ²			
Ref Wdg	T447441 NONE			
Sound Pressure @ 1M	82 dBA			
VFD Rating	NONE			
Outline Dwg	B-SS55984-2438			
Conn. Diag	A-EE7300CB			
Additional Specifications:				
0				
365THFS8036				
EQUIV CKT (OHMS / PHASE)				
R1	R2	X1	X2	Xm
0.0090	0.0060	0.0750	0.0990	2.3110



Speed -Torque Curve

