

# PRODUCT INFORMATION PACKET

Model No: 5K49DN4131  
Catalog No: K439  
1/4, 1725, TENV, 56, 3/60/208-230/460  
Totally Enclosed Non-Ventilated (TENV)



Regal and Marathon are trademarks of Regal Beloit Corporation or one of its affiliated companies.  
©2018 Regal Beloit Corporation, All Rights Reserved. MC017097E





### Nameplate Specifications

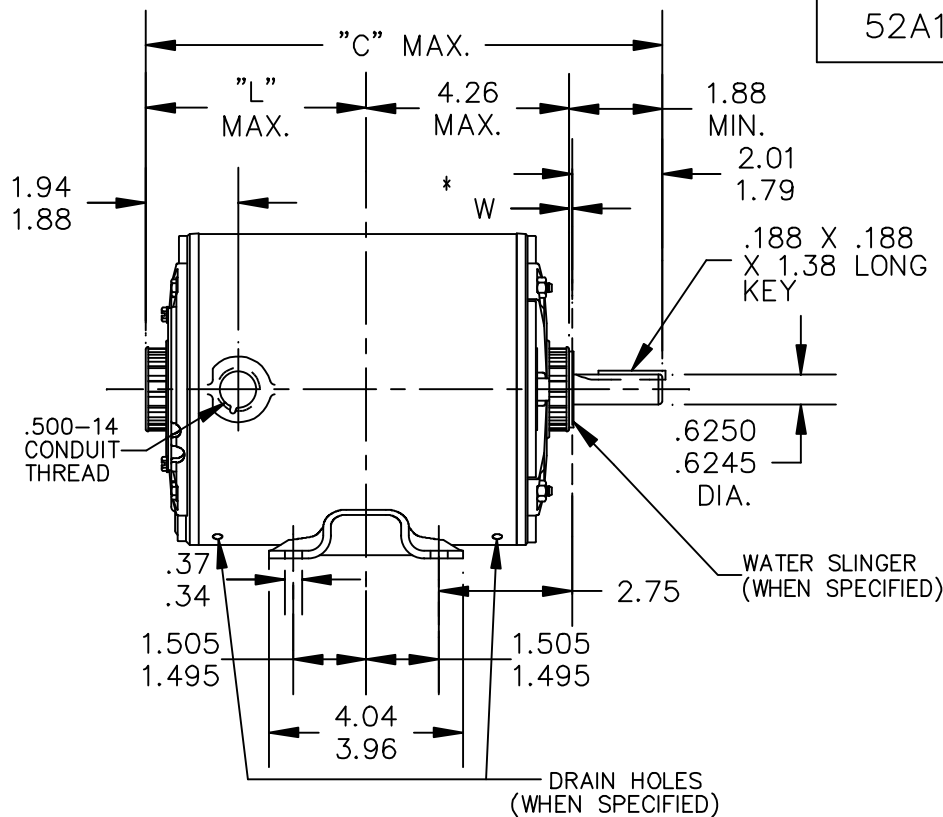
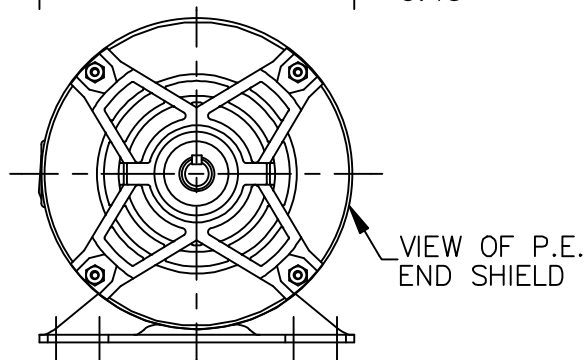
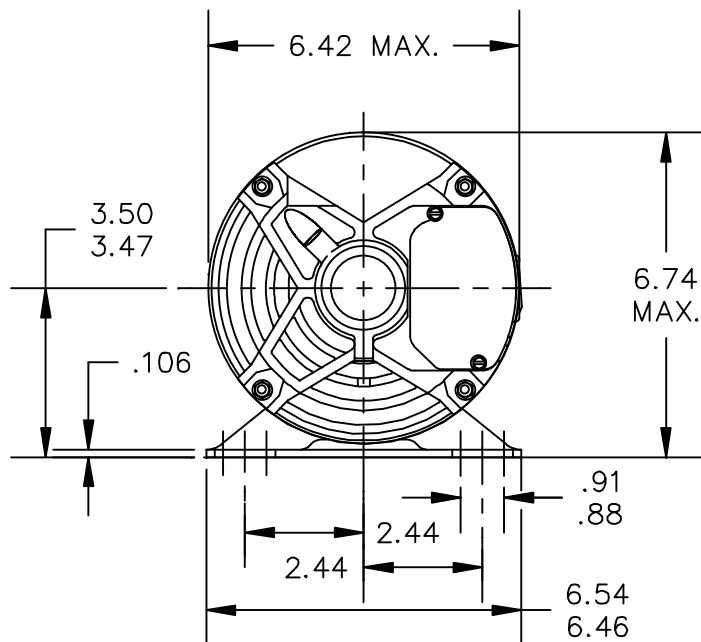
Output HP	<b>0.25 Hp</b>	Output KW	<b>0.19 kW</b>
Frequency	<b>60 Hz</b>	Voltage	<b>208-230/460 V</b>
Current	<b>1.1-1.2,0.6 A</b>	Speed	<b>1725 rpm</b>
Service Factor	<b>1</b>	Phase	<b>3</b>
Efficiency	<b>67.4 %</b>	Duty	<b>CONT</b>
Insulation Class	<b>B</b>	Design Code	<b>-</b>
KVA Code	<b>L</b>	Frame	<b>56</b>
Enclosure	<b>TENV</b>	Overload Protector	<b>N/R</b>
Ambient Temperature	<b>40 °C</b>	Drive End Bearing Size	<b>6203</b>
Opp Drive End Bearing Size	<b>6203</b>	UL	<b>Recognized</b>
CSA	<b>Yes</b>	CE	<b>N</b>

### Technical Specifications

Electrical Type	<b>Three Phase</b>	Starting Method	<b>N/R</b>
Poles	<b>4</b>	Rotation	<b>CCW/CW</b>
Mounting	<b>WB</b>	Motor Orientation	<b>ANY</b>
Drive End Bearing	<b>BALL</b>	Opp Drive End Bearing	<b>BALL</b>
Frame Material	<b>Rolled Steel</b>	Overall Length	<b>9.57 in</b>
Frame Length	<b>5.34 in</b>	Shaft Diameter	<b>0.63 in</b>
Shaft Extension	<b>1.88 in</b>		
Outline Drawing	<b>52A109628P7</b>	Connection Diagram	<b>113A930FIG2</b>

This is an uncontrolled document once printed or downloaded and is subject to change without notice. Date Created: 04/05/2018

52A109628



ALL DIMENSIONS ARE IN INCHES

7	K	49	56	9.57	3.41		5.34
6	K	48	56	12.66	6.50		8.43
5	K	49	56	11.91	5.75		7.68
4	K	49	56	11.38	5.22		7.15
3	K	46	56	10.78	4.62		6.55
2	K	49	56	10.38	4.22		6.15
1	K	42	56	9.95	3.79		5.72
P	TYPE	RBC SIZE	NEMA FR.	"C"	"L"		MIN. SHELL

\* W IS A VARIABLE CLEARANCE DUE TO VARIATIONS IN PARTS AND ASSEMBLY

				TOLERANCES UNLESS SPECIFIED		DRAWN M.D.P 06/03/94			
				DEC.	INCHES	CHK			
				.X	±0.1	APPD M.D.P 06/03/94			
5	REDRAWN IN DRAFT SIGHT	UD	10/08/12	PKG	.XX	±0.02	SCALE 1=1		
4	CHG TO RBC FORMAT PER ISO5-1777	SD	03/21/06		.XXX	±0.005	REF		
3	ADDED DRAIN HOLES.	M.D.P	08/18/95		.XXXX	±0.0005	FMF		
NO.	REVISION	BY & DATE	CHK	ANG	±1.0	FINISH	PREV		
THIS DRAWING IN DESIGN AND DETAIL IS OUR PROPERTY AND MUST NOT BE USED EXCEPT IN CONNECTION WITH OUR WORK ALL RIGHTS OF DESIGN AND INVENTION ARE RESERVED THIS IS AN ELECTRONICALLY GENERATED DOCUMENT - DO NOT SCALE THIS PRINT				RFP	CAD FILE	52A109628	SIZE	DRAWING NO.	REV.
				DIST			A	52A109628	5



REVISIONS

REV.	DESCRIPTION	DATE	APPROVED
1	CHG TO RBC FORMAT PER IS05-1777	06/15/06	MADHU
2	RENAMED 113A930_FIG-2 TO 113A930FIG2 PER IS07-0972	05/08/07	MADHU

This document is the property of REGAL-BELOIT CORPORATION ("RBC") including its subsidiaries and divisions and contains proprietary information of RBC. This document is loaned on the express condition that neither the recipient nor any other person shall be permitted to disclose or disseminate the information contained herein without the express written consent of RBC. This document shall be returned to RBC upon its request. This document may be subject to certain restrictions under U.S. export control laws and regulations.

THIRD ANGLE PROJECTION

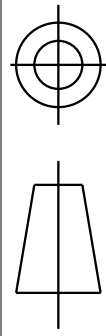
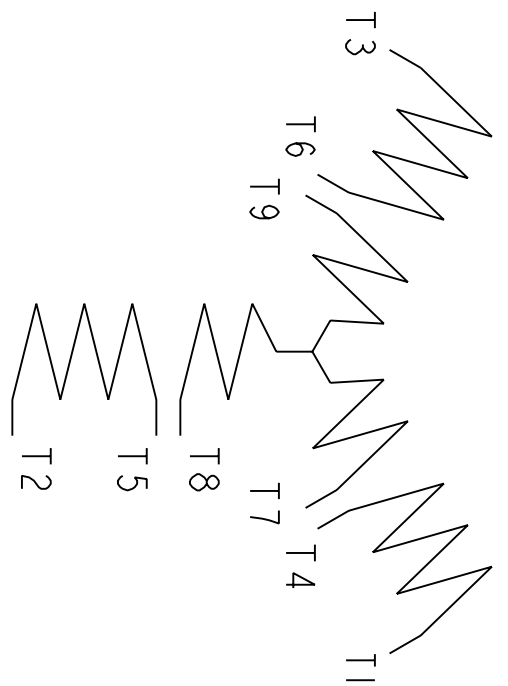


FIG. 2

3 PHASE



	VOLTS	L1	L2	L3	TOGETHER
2Y	LOW	1-7	2-8	3-9	4-5-6
1Y	HIGH	1	2	3	4-7, 5-8, 6-9

BRAKE MOTORS : CONNECT BRAKE LEADS B1 & B2 TO MOTOR LEADS T7 & T8.

FOR ADDITIONAL INFO REFER TO:

APPLIED PRACTICES	SIGNATURES	DATE
DIMENSIONS ARE IN INCHES	MODEL M.D. PAPE	02/25/03
TOLERANCE ON:	DETAIL	
1 PL DECIMALS ± 0.1	CHECKED	
2 PL DECIMALS ± 0.02	ENGRG	
3 PL DECIMALS ± 0.005	MFG	
ANGLES ± 1.0	QUALITY	
FRACTIONS ±	ISSUED	
	M.D. PAPE	02/25/03



REGAL-BELOIT CORPORATION

CONNECTION DIAGRAM

MATERIAL	FINISH	SCALE: 1.000	REF. No:
SOLID MODEL: 113A930FIG2	ISSUED	A	

113A930FIG2

REV 2

SHEET 1 of 1