

PRODUCT INFORMATION PACKET

Model No: 145TTGN6527
Catalog No: U003A
2,1800,EPFC,145T,3/60/230/460
Explosion Proof



Regal and Marathon are trademarks of Regal Beloit Corporation or one of its affiliated companies.
©2018 Regal Beloit Corporation, All Rights Reserved. MC017097E





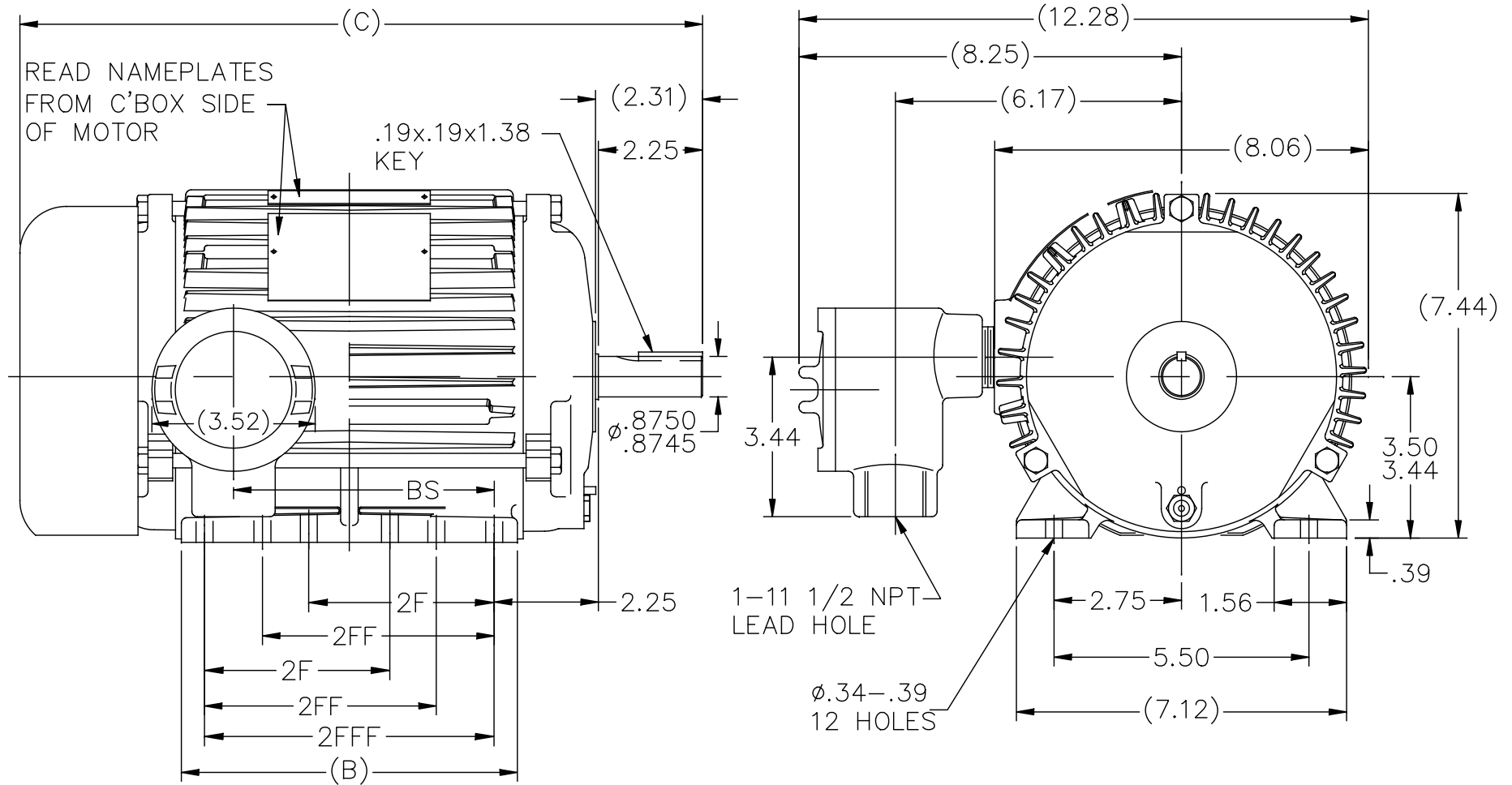
Nameplate Specifications

Output HP	2 Hp	Output KW	1.49 kW
Frequency	60 Hz	Voltage	230/460 V
Current	6/3 A	Speed	1755 rpm
Service Factor	1.15	Phase	3
Efficiency	86.5 %	Duty	CONTINUOUS
Insulation Class	F	Design Code	A
KVA Code	N	Frame	145T
Enclosure	EPFC	Overload Protector	NOT
Ambient Temperature	40 °C	Drive End Bearing Size	6205
Opp Drive End Bearing Size	6203	UL	No
CSA	N	CE	N
IP Code	54		

Technical Specifications

Electrical Type	SQ CAGE INV RATED	Starting Method	LINE OR INVERTER
Poles	4	Rotation	REV
Mounting	RIGID	Motor Orientation	HORIZONTAL
Drive End Bearing	BALL	Opp Drive End Bearing	BALL
Frame Material	CAST IRON	Shaft Type	T
Overall Length	14.73 in	Frame Length	7.5 in
Shaft Diameter	0.88 in	Shaft Extension	2.31 in
Assembly/Box Mounting	F1 ONLY		
Outline Drawing	A-104607-750	Connection Diagram	A-EE7308T

104607



NOTE:
1. BOX CAN ONLY BE ROTATED CLOCKWISE UP TO 270° FROM ITS ORIGINAL POSITION.

DASH	FR.	C	B	BS	2F	2FF	2FFF
750	143/5	14.73	7.25	5.62	4.00	5.00	6.25

NO.	REVISION	BY & DATE	CHK	ANG	TOLERANCES UNLESS SPECIFIED		REGAL™ Regal Beloit America, Inc.	DRAWN CAV 07-14-1999						
					DEC.	INCHES		CHK	ML	APPD	GK	SCALE	OF	REV.
4	UPDATED PER. ISAAC 11-4672	RFH 12/27/2011	EH	.X	±.1			APPD	GK	07-14-1999				
3	REDRAWN IN AUTOCAD	TAT 06-29-2004	ML	.XX	±.03		TITLE OUTLINE							
2	REMOVED -625, 750 FR. WAS 143/5 CN 24300-319	TJB 02-07-2000		.XXX	±.005		140 FR. - EXP.PR. - (629 NEW DESIGN)							
1	NEW DRAWING	CAV 07-14-1999		.XXXX	±.0005		MAT'L.							
					±7'30"		FINISH							
THIS DRAWING IN DESIGN AND DETAIL IS OUR PROPERTY AND MUST NOT BE USED EXCEPT IN CONNECTION WITH OUR WORK ALL RIGHTS OF DESIGN AND INVENTION ARE RESERVED THIS IS AN ELECTRONICALLY GENERATED DOCUMENT - DO NOT SCALE THIS PRINT					RFP		CAD FILE 104607	SIZE	DRAWING NO.	PAGE	OF	REV.		
					DIST	WP		A	104607					4

HIGH VOLTAGE

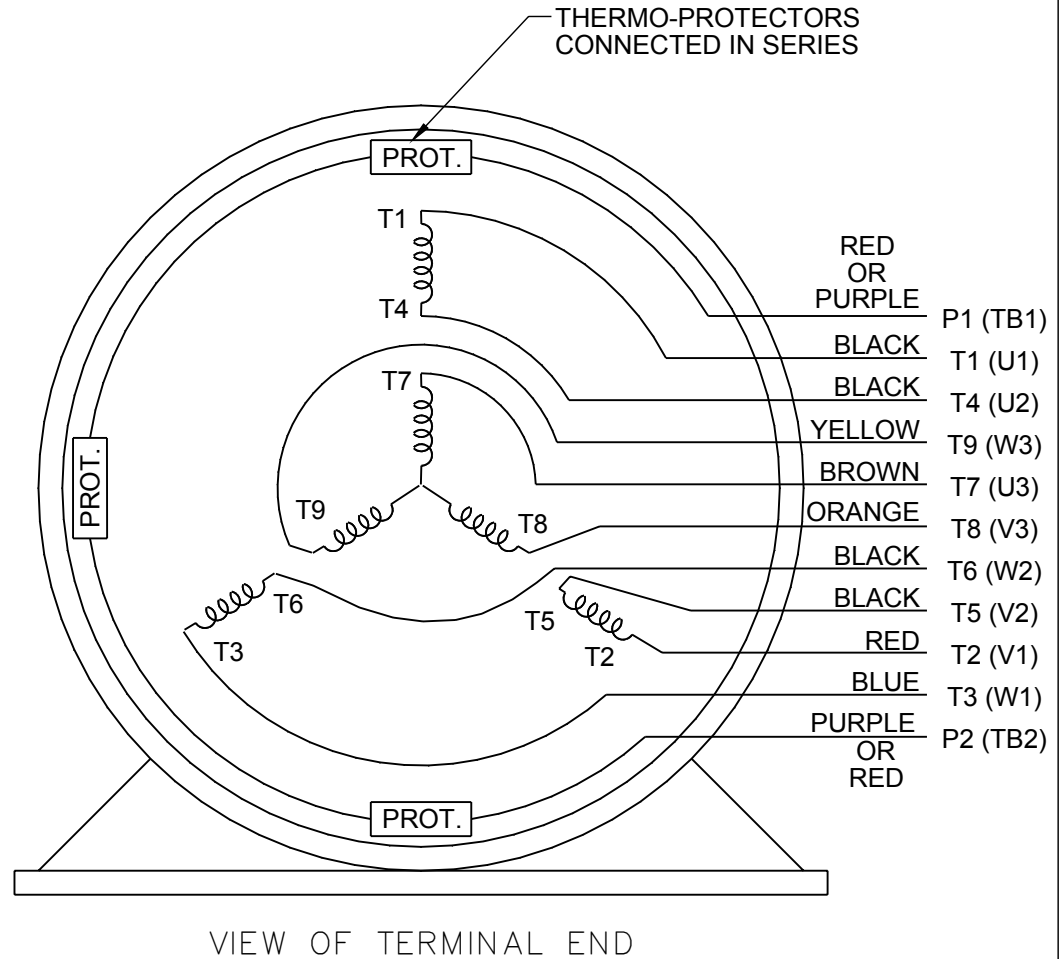


**NOTE FOR FACTORY USE ONLY:
TO SURGE TEST FOR COMMON CONNECT:**
HIGH VOLT: CONNECT P1 TO T1
THEN P2 TO L1
LOW VOLT: CONNECT P1 TO T1 & T7,
THEN P2 TO L1

LOW VOLTAGE



THREE PHASE DUAL VOLTAGE MOTOR



NOTE: LEAD'S COLOR CAN BE YELLOW OR WHITE FOR MT2 PLANT

DRAWING REVISION R	REVISION BY AJW	DATE 07-17-2015		DRAWN BY SMC	Regal Beloit America, Inc.
ECO ECO-0081632	APPROVED BY T. VUE	DATE 07-17-2015		DATE 05-13-1992	
ECO DESCRIPTION REV'D IEC NOTATIONS PER IEC 60034-8				APPROVED BY TB	DESCRIPTION CONN DIAGRAM-INTERNAL
<small>COPYRIGHT REGAL BELOIT AMERICA, INC. ALL RIGHTS RESERVED. PROPRIETARY AND CONFIDENTIAL INFORMATION - THIS DOCUMENT IS THE PROPERTY OF REGAL BELOIT AMERICA, INC. ("OWNER") AND CONTAINS OWNER'S PROPRIETARY INFORMATION. ANY PERSON, CORPORATION OR OTHER FIRM RECEIVING IT IS DEEMED, BY RECEIVING IT, TO AGREE THAT IT, AND/OR ANY PART OF IT, SHALL NOT BE DISCLOSED TO ANY PERSON, CORPORATION OR OTHER ENTITY, DUPLICATED, AND/OR USED, EXCEPT AS EXPRESSLY APPROVED IN WRITING IN ADVANCE BY OWNER. THIS DOCUMENT SHALL BE RETURNED TO OWNER UPON REQUEST. IT MAY BE SUBJECT TO CERTAIN RESTRICTIONS UNDER APPLICABLE EXPORT CONTROL LAWS AND REGULATIONS.</small>				DATE 05-13-1992	3 PHASE - DUAL VOLTAGE MOTOR
			REFERENCE EE7308/EE7300	MATERIAL	PROCESS/FINISH
			THIRD ANGLE PROJECTION	SIZE A	DRAWING NUMBER EE7308T

Date: 6/20/2017

Customer:

Attention:

Submitted by: FAREEDA DUDEKULA



Submital

Data @ 460 V

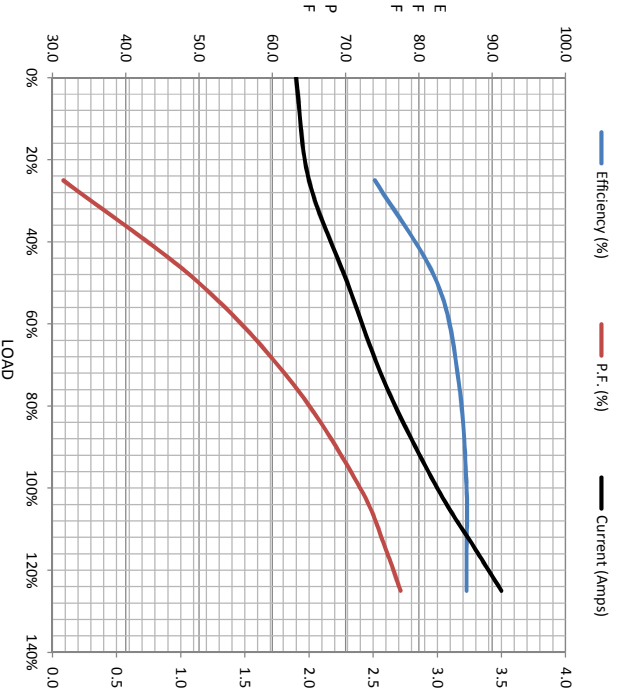
Load	Motor Load Data						
	0%	25%	50%	75%	100%	115%	125%
Current (Amps)	1.90	2.00	2.30	2.60	3.0	3.3	3.5
Torque (ft-lb)	0.00	1.50	2.95	4.5	6.0	6.9	7.5
RPM	1800	1790	1780	1770	1755	1750	1745
Efficiency (%)		74.0	82.5	85.5	86.5	86.5	86.5
P.F. (%)	8.0	31.5	50.0	63.0	72.0	75.5	77.5

Motor Speed Data

	LR	Pull-Up	BD	Rated	Idle
Speed (rpm)	0	900	1245	1755	1800
Current (Amps)	30.0	25.0	18.7	3.0	1.90
Torque (ft-lb)	24.5	22.1	32.5	6.0	0.00

Information Block

HP	2.0
Sync. RPM	1800
Frame	145
Enclosure	TEFC
Construction	TEN
Voltage	30/460#190/38 V
Frequency	60 Hz
Design	A
LR Code letter	N
Service Factor	1.15
Temp Rise @ FL	35 °C
Duty	CONT
Ambient	40 °C
Elevation	1,000 feet
Rotor/Shaft wkt	0.13 Lb-Fe
Ret Wdg	Z14166 R1
Sound Pressure @ 1M	62 dBA
VFD Rating	CONSTANT 10:1
Outline Dwg	A-104607-750
Conn. Diag	A-EE7308T
Additional Specifications:	
EQUIV CKT (OHMS / PHASE)	
R1	R2
3.8060	3.0530
X1	X2
5.9070	6.1490
Xm	Xm
165.4160	



Speed -Torque Curve

