

PRODUCT INFORMATION PACKET

Model No: 364TTGS16536
Catalog No: E573A
60,1800,EPFC,364T,3/60/230/460
Explosion Proof



Regal and Marathon are trademarks of Regal Beloit Corporation or one of its affiliated companies.
©2018 Regal Beloit Corporation, All Rights Reserved. MC017097E



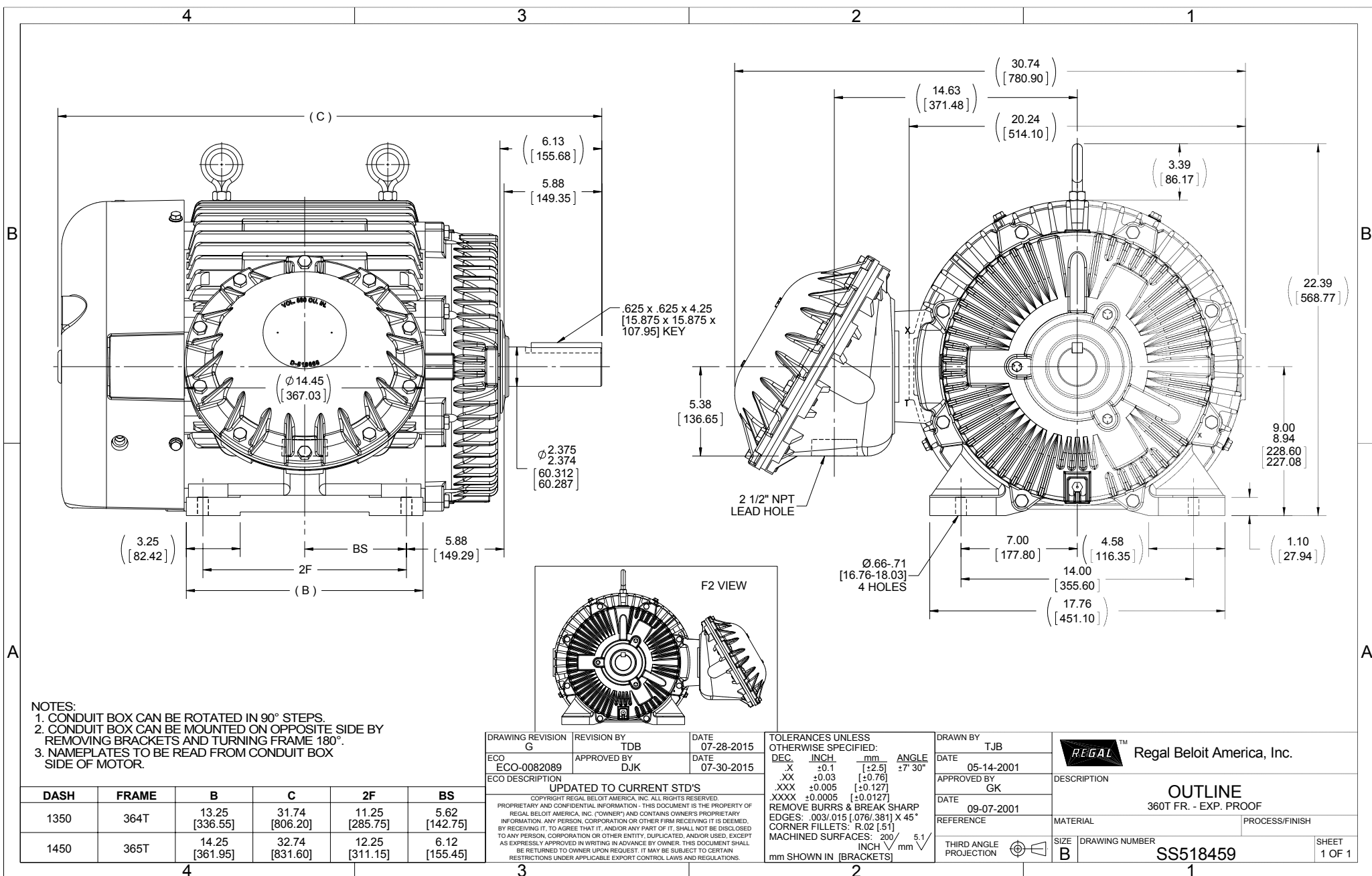


Nameplate Specifications

Output HP	60 Hp	Output KW	45 kW
Frequency	60 Hz	Voltage	230/460 V
Current	138/69 A	Speed	1780 rpm
Service Factor	1	Phase	3
Efficiency	95 %	Duty	CONTINUOUS
Insulation Class	F	Design Code	B
KVA Code	G	Frame	364T
Enclosure	EPFC	Overload Protector	NOT
Ambient Temperature	40 °C	Drive End Bearing Size	6314
Opp Drive End Bearing Size	6312	UL	No
CSA	N	CE	N
IP Code	54		

Technical Specifications

Electrical Type	SQ CAGE INV RATED	Starting Method	LINE OR INVERTER
Poles	4	Rotation	REV
Mounting	RIGID	Motor Orientation	HORIZONTAL
Drive End Bearing	BALL	Opp Drive End Bearing	BALL
Frame Material	CAST IRON	Shaft Type	T
Overall Length	31.74 in	Frame Length	13.5 in
Shaft Diameter	2.38 in	Shaft Extension	6.13 in
Assembly/Box Mounting	F1 ONLY		
Outline Drawing	B-SS518459-1350	Connection Diagram	A-EE7308AD

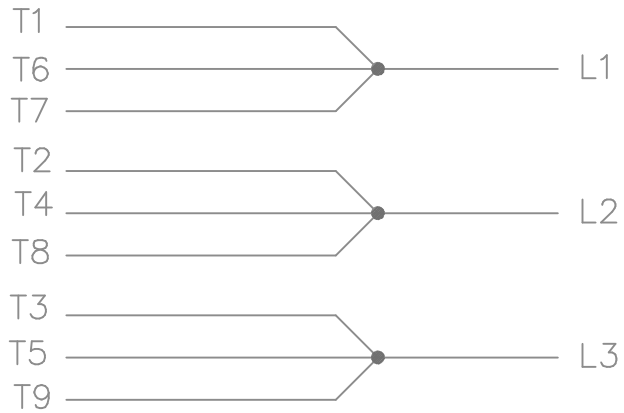


- NOTES:
 1. CONDUIT BOX CAN BE ROTATED IN 90° STEPS.
 2. CONDUIT BOX CAN BE MOUNTED ON OPPOSITE SIDE BY REMOVING BRACKETS AND TURNING FRAME 180°.
 3. NAMEPLATES TO BE READ FROM CONDUIT BOX SIDE OF MOTOR.

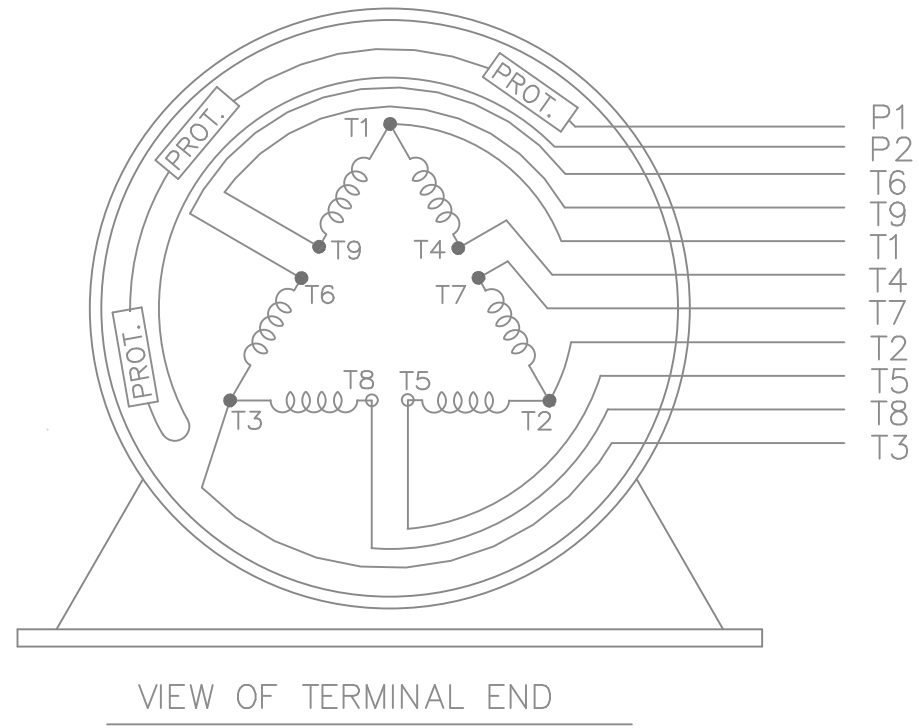
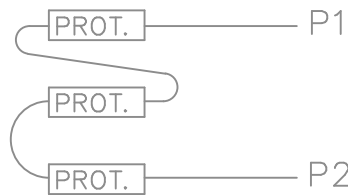
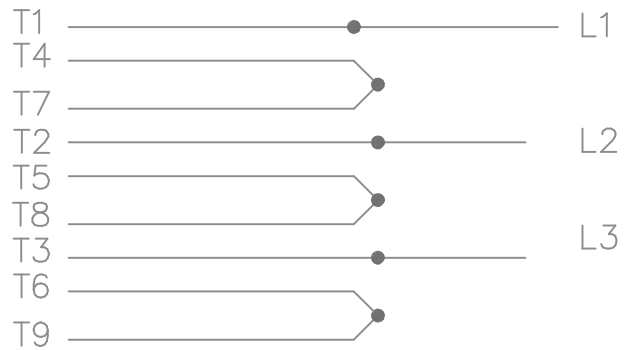
DRAWING REVISION G	REVISION BY TDB	DATE 07-28-2015	TOLERANCES UNLESS OTHERWISE SPECIFIED: DEC. INCH mm ANGLE X +0.1 [+2.5] ±7°-30° XX ±0.03 [+0.76] .XXX ±0.005 [+0.127] XXXX ±0.0005 [+0.0127]	DRAWN BY TJB
ECO-0082089	APPROVED BY DJK	DATE 07-30-2015	REMOVE BURRS & BREAK SHARP EDGES: .003/.015 [0.076/3.81] X 45° CORNER FILLETS: R.02 [51] MACHINED SURFACES: 200 5.1 INCH/mm	DATE 05-14-2001
ECO DESCRIPTION UPDATED TO CURRENT STD'S COPYRIGHT REGAL BELOIT AMERICA, INC. ALL RIGHTS RESERVED. PROPRIETARY AND CONFIDENTIAL INFORMATION - THIS DOCUMENT IS THE PROPERTY OF REGAL BELOIT AMERICA, INC. (OWNER) AND CONTAINS OWNER'S PROPRIETARY INFORMATION. ANY PERSON, CORPORATION OR OTHER FIRM RECEIVING IT IS DEEMED, BY RECEIVING IT, TO AGREE THAT IT, AND/OR ANY PART OF IT, SHALL NOT BE DISCLOSED TO ANY PERSON, CORPORATION OR OTHER ENTITY, DUPLICATED, AND/OR USED, EXCEPT AS EXPRESSLY APPROVED IN WRITING IN ADVANCE BY OWNER. THIS DOCUMENT SHALL BE RETURNED TO OWNER UPON REQUEST. IT MAY BE SUBJECT TO CERTAIN RESTRICTIONS UNDER APPLICABLE EXPORT CONTROL LAWS AND REGULATIONS.			REGAL™ Regal Beloit America, Inc.	DESCRIPTION OUTLINE 360T FR. - EXP. PROOF
			THIRD ANGLE PROJECTION	DATE 09-07-2001
			SIZE B	REFERENCE
			DRAWING NUMBER SS518459	PROCESS/FINISH
			SHEET 1 OF 1	

DASH	FRAME	B	C	2F	BS
1350	364T	13.25 [336.55]	31.74 [806.20]	11.25 [285.75]	5.62 [142.75]
1450	365T	14.25 [361.95]	32.74 [831.60]	12.25 [311.15]	6.12 [155.45]

LOW VOLTAGE



HIGH VOLTAGE



VIEW OF TERMINAL END

WHEN MORE THAN ONE PROT. IS USED; PROT. ARE CONNECTED IN SERIES

				TOLERANCES UNLESS SPECIFIED			DRAWN MJD 12-19-1997					
				DEC.	INCHES		CHK ML 01-07-1998					
				.X	±.1	APPD GK 01-07-1998						
				.XX	±.02	SCALE						
8	HIGH VOLT. SCHEMATIC WAS L1, L3 & L3	CN 32724	DRS 06-12-2004	ML	.XXX	±.005	REF					
7	REDRAWN ON CADD		MJD 01-07-1998		.XXXX	±.0005	FMF					
NO.	REVISION	BY & DATE	CHK	ANG	±7'30"	PREV						
THIS DRAWING IN DESIGN AND DETAIL IS OUR PROPERTY AND MUST NOT BE USED EXCEPT IN CONNECTION WITH OUR WORK ALL RIGHTS OF DESIGN AND INVENTION ARE RESERVED THIS IS AN ELECTRONICALLY GENERATED DOCUMENT - DO NOT SCALE THIS PRINT				RFP	CAD FILE ee7308ad			SIZE	DRAWING NO.	PAGE	OF	REV.
				DIST	WA-LB			A	EE7308AD			8

CERTIFICATION DATA SHEET

Model#: 364TTGS16536 AN **WINDING#:** T3654165 R4 6
CONN. DIAGRAM: A-EE7308AD **ASSEMBLY:** F1 ONLY
OUTLINE: B-SS518459-1350

TYPICAL MOTOR PERFORMANCE DATA

HP	KW	SYNC. RPM	F.L. RPM	FRAME	ENCLOSURE	KVA CODE	DESIGN
60&50	45&37	1800	1780&1480	364T	EPFC	G	B

PH	Hz	VOLTS	FL AMPS	START TYPE	DUTY	INSL	S.F	AMB°C	ELEVATION
3	60/50	230/460#190/ 380	138/69&139/6 9.5	LINE OR INVERTER	CONTINUOU S	F3	1.0/1.0	40	3300

FULL LOAD EFF: 95&94.5	3/4 LOAD EFF: 95	1/2 LOAD EFF: 94.5	GTD. EFF	ELEC. TYPE	NO LOAD AMPS
			94.5	SQ CAGE INV RATED	44 / 22

F.L. TORQUE	LOCKED ROTOR AMPS	L.R. TORQUE	B.D. TORQUE	F.L. RISE°C
177 LB-FT	870 / 435	325 LB-FT 184	450 LB-FT 254	65

SOUND PRESSURE @ 3 FT.	SOUND POWER	ROTOR WK^2	MAX. WK^2	SAFE STALL TIME	STARTS /HOUR	APPROX. MOTOR WGT
68 dBA	78 dBA	16 LB-FT^2	420 LB-FT^2	25 SEC.	2	925 LBS.

***** SUPPLEMENTAL INFORMATION *****

DE BRACKET TYPE	ODE BRACKET TYPE	MOUNT TYPE	ORIENTATION	SEVERE DUTY	HAZARDOUS LOCATION	DRIP COVER	SCREENS	PAINT
STANDARD	STANDARD	RIGID	HORIZONTAL	PREMIUM SEVERE DUTY	EXP PROOF CL I GR C&D CL II GR F&G T3B	FALSE	NONE	BLUE (EPOXY)

BEARINGS		GREASE	SHAFT TYPE	SPECIAL DE	SPECIAL ODE	SHAFT MATERIAL	FRAME MATERIAL
DE	OPE						
BALL 6314	BALL 6312	POLYREX EM	T	NONE	NONE	1045 HOT ROLLED (C-204)	CAST IRON

THERMO-PROTECTORS				THERMISTORS	CONTROL	SPACE /n HEATERS
THERMOSTATS	PROTECTORS	WDG RTDs	BRG RTDs			
TSTATS (N/C)	NOT	NONE	NONE	NONE	FALSE	NONE VOLTS

If Inverter equals NONE, contact factory for further information

INVERTER TORQUE: CONSTANT 10:1
INV. HP SPEED RANGE: NONE
ENCODER: NONE
NONE NONE
NONE NONE PPR
BRAKE: NONE NONE
NONE P/N NONE
NONE NONE
NONE FT-LB NONE V NONE Hz

*
N
O
T
E
S
*

DATE: 06/21/2017 08:35:15 AM
 FORM 3531 REV.3 02/07/99

** Subject to change without notice.

Data Sheet

Date: 6/20/2017

Customer:
 Attention:
 Submitted by: FAREEDA DUDEKULA



364TGS16536

Submittal
 Data @ 460 V

Load	Motor Load Data						
	0%	25%	50%	75%	100%	115%	125%
Current (Amps)	22.0	27.0	39.0	53.0	69.0	78.5	86.5
Torque (ft-lb)	0.00	44.0	88.0	133	177	204	222
RPM	1800	1795	1790	1785	1780	1,775	1772
Efficiency (%)		92.4	94.5	95.0	95.0	94.5	94.1
P.F. (%)	5.0	56.0	77.0	83.5	86.0	86.5	86.0

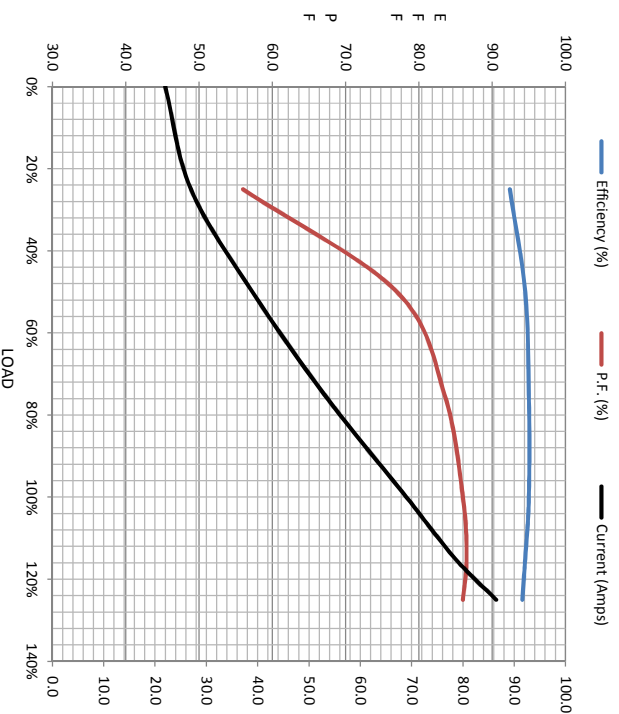
Motor Speed Data

	LR	Pull-Up	BD	Rated	Idle
Speed (rpm)	0	900	1715	1780	1800
Current (Amps)	435	375	250	69.0	22.0
Torque (ft-lb)	325	300	450	177	0.00

Information Block

HP	60.0
Sync. RPM	1800
Frame	364
Enclosure	TEFC
Construction	TFS
Voltage	30/460#190/38 V
Frequency	60 Hz
Design	A
LR Code letter	G
Service Factor	1.15
Temp Rise @ FL	65 °C
Duty	CONT
Ambient	40 °C
Elevation	1,000 feet
Rotor/Shaft wk ^e	16.0 Lb-Fe
Rel Wdg	T3654165 R4
Sound Pressure @ 1M	68 dBA
VFD Rating	CONSTANT 2:1
Outline Dwg	B-SS519459-1350
Conn. Diag	A-EET308AD
Additional Specifications:	
0	
0	

EQUIV CKT (OHMS / PHASE)				
R1	R2	X1	X2	Xm
0.0650	0.0470	0.4120	0.4730	11.4470



Speed -Torque Curve

