

PRODUCT INFORMATION PACKET

Model No: 056B11G5301
Catalog No: G655
1/2,1200,EPFC,56,1/60/115/208-230
Explosion Proof



Regal and Marathon are trademarks of Regal Beloit Corporation or one of its affiliated companies.
©2018 Regal Beloit Corporation, All Rights Reserved. MC017097E





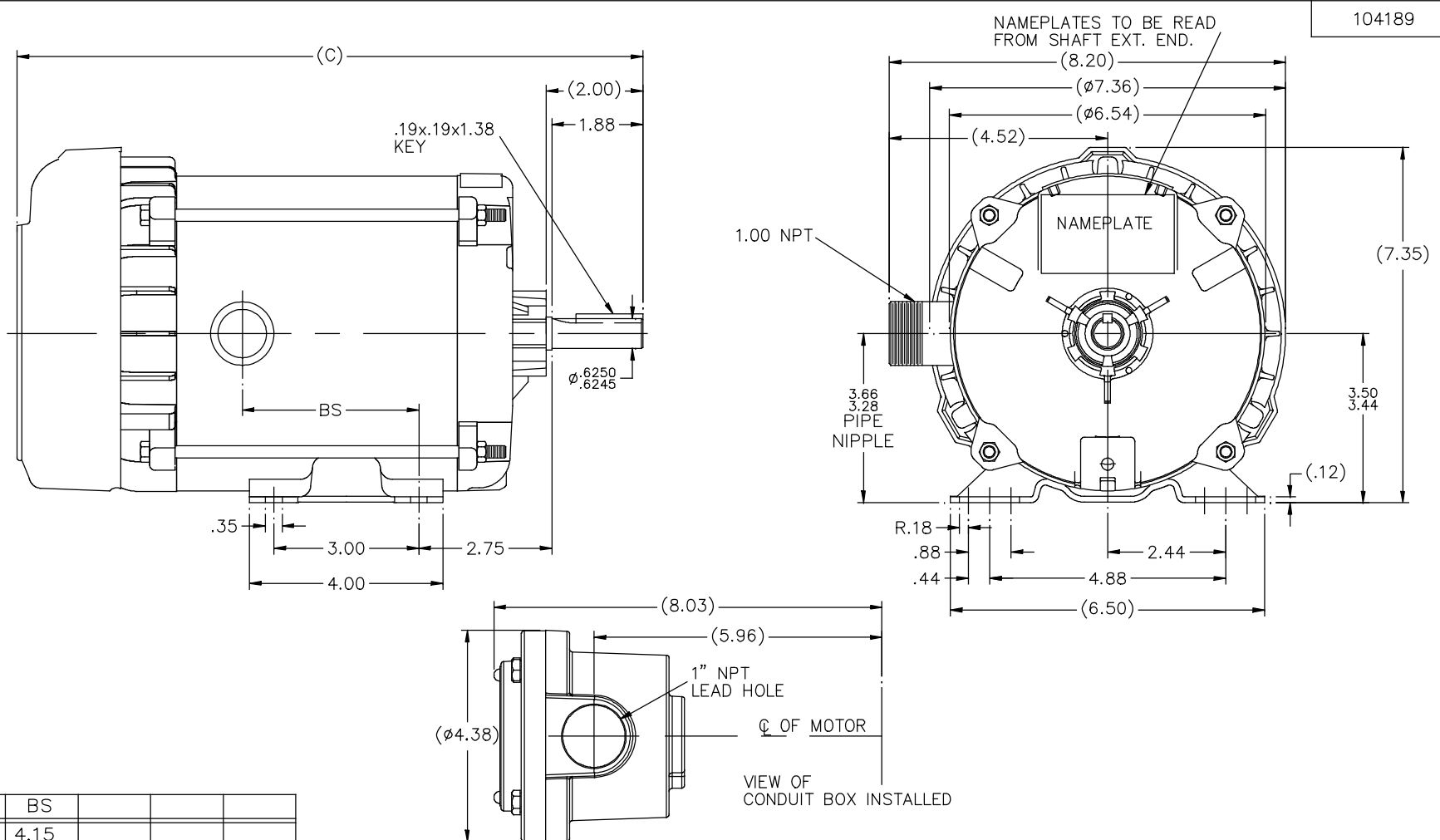
Nameplate Specifications

Output HP	0.5 Hp	Output KW	0.37 kW
Frequency	60 Hz	Voltage	115/208-230 V
Current	9.6/4.7-4.8 A	Speed	1140 rpm
Service Factor	1	Phase	1
Efficiency	64 %	Duty	CONTINUOUS
Insulation Class	B	Design Code	NO DESIGN CODE
KVA Code	M	Frame	56
Enclosure	EPFC	Overload Protector	AUTOMATIC
Ambient Temperature	40 °C	Drive End Bearing Size	6203
Opp Drive End Bearing Size	6203	UL	Recognized
CSA	N	CE	N
IP Code	54		

Technical Specifications

Electrical Type	CAP START CAP RUN	Starting Method	ACROSS THE LINE
Poles	6	Rotation	SELECTIVE CCW
Mounting	RIGID	Motor Orientation	HORIZONTAL
Drive End Bearing	BALL	Opp Drive End Bearing	BALL
Frame Material	ROLLED STEEL	Shaft Type	T
Overall Length	14.94 in	Frame Length	7.81 in
Shaft Diameter	0.63 in	Shaft Extension	2 in
Assembly/Box Mounting	F1 ONLY		
Outline Drawing	B-104189-781	Connection Diagram	102006-95

This is an uncontrolled document once printed or downloaded and is subject to change without notice. Date Created: 04/05/2018

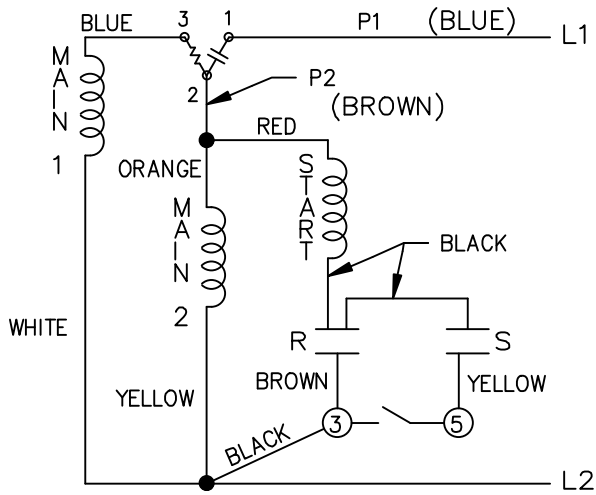


104189

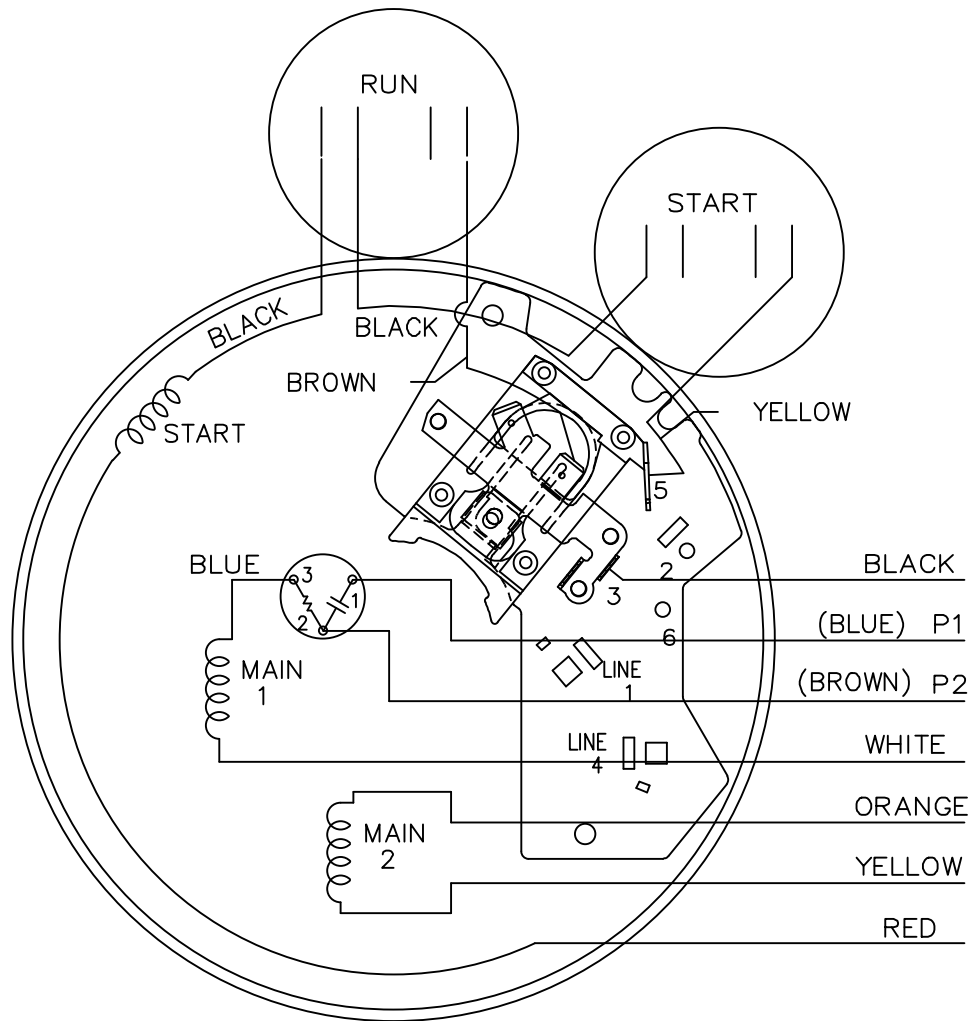
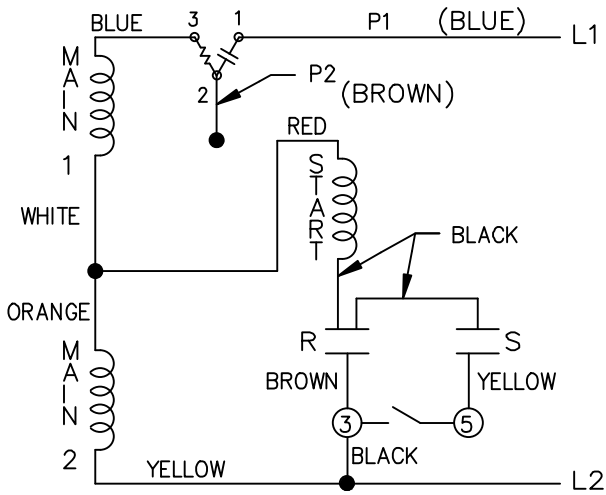
DASH	(C)	BS			
631	13.44	4.15			
681	13.94	4.65			
731	14.44	5.15			
781	14.94	5.65			
831	15.44	6.15			
881	15.94	6.65			
931	16.44	7.15			
981	16.94	7.65			

			TOLERANCES UNLESS SPECIFIED		REGAL™ Regal Beloit America, Inc.		DRAWN MH 11-20-1996		
			DEC.	INCHES			CHK	ML 12-02-1996	
4	COND. BOX INSTALLED VIEW UPDATED PER ECR-0044571	UD 10/15/13	ST	.X	±.1			APPD GK 12-02-1996	
3	REVISED C'BOX PER CN40784A	JJB 02/23/2007	ML	.XX	±.03	TITLE OUTLINE		SCALE 1=2	
2	ADDED CONDUIT BOX VIEW CN 26686	MRB 03-22-1998		.XXX	±.005	56 FR. - EXP. PR. - TEFC - 1Ø & 3Ø		REF	
1	NEW DRAWING CN 23099	MH 12-02-1996		.XXXX	±.0005	MAT'L		FMF	
NO.	REVISION	BY & DATE	CHK	ANG	±.750"	FINISH		PREV	
THIS DRAWING IN DESIGN AND DETAIL IS OUR PROPERTY AND MUST NOT BE USED EXCEPT IN CONNECTION WITH OUR WORK. ALL RIGHTS OF DESIGN AND INVENTION ARE RESERVED. THIS IS AN ELECTRONICALLY GENERATED DOCUMENT - DO NOT SCALE THIS PRINT			RFP	CAD FILE 104189			SIZE B	DRAWING NO. 104189	PAGE OF 4
			DIST	WP				REV. 4	

LOW VOLTAGE C.C.W.

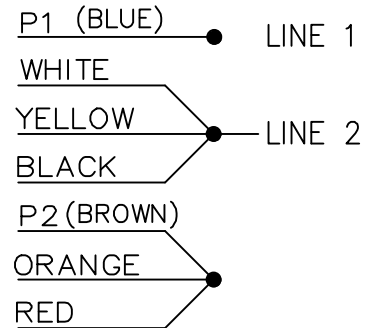


HIGH VOLTAGE C.C.W.

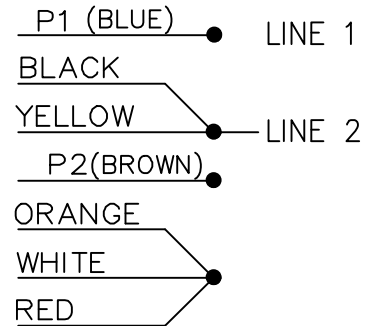


DUAL VOLTAGE
CAP. START-CAP. RUN
OVERLOAD SELECT
ROTATION.

LOW VOLT. CCW ROT.



HIGH VOLT. CCW ROT.



FOR CW ROT. EITHER
VOLTAGE INTERCHANGE
RED WITH BLACK LEAD.

				TOLERANCES UNLESS SPECIFIED		DRAWN AJS 01-18-1995
				DEC.	INCHES	
				.X	±.1	APPD ET 01-20-1995
3	ADDED COLOURS TO P1 & P2 ISAAC 12-3060	PVR 08-01-12	SVL	.XX	±.02	SCALE 5=8
2	ADDED WIRE COLOR TO P1 AND P2 ISAAC 12-3060	WGJ 06-26-2012	DD	.XXX	±.005	REF
1	NEW DRAWING 4237342	AJS 01-20-1995		.XXXX	±.0005	FMF
NO.	REVISION	BY & DATE	CHK	ANG	±7'30"	PREV
THIS DRAWING IN DESIGN AND DETAIL IS OUR PROPERTY AND MUST NOT BE USED EXCEPT IN CONNECTION WITH OUR WORK ALL RIGHTS OF DESIGN AND INVENTION ARE RESERVED THIS IS AN ELECTRONICALLY GENERATED DOCUMENT - DO NOT SCALE THIS PRINT				RFP	CAD FILE 102006-95	SIZE A
				DIST WP		DRAWING NO. 102006-95
						PAGE 3 OF 3



