

PRODUCT INFORMATION PACKET

Model No: 5K49FN6381
Catalog No: K2101
1/3,1200,EPFC,56,3/60/230/460
Explosion Proof



Regal and Marathon are trademarks of Regal Beloit Corporation or one of its affiliated companies.
©2018 Regal Beloit Corporation, All Rights Reserved. MC017097E

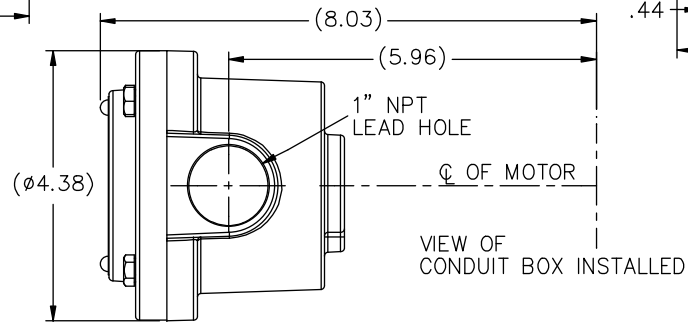
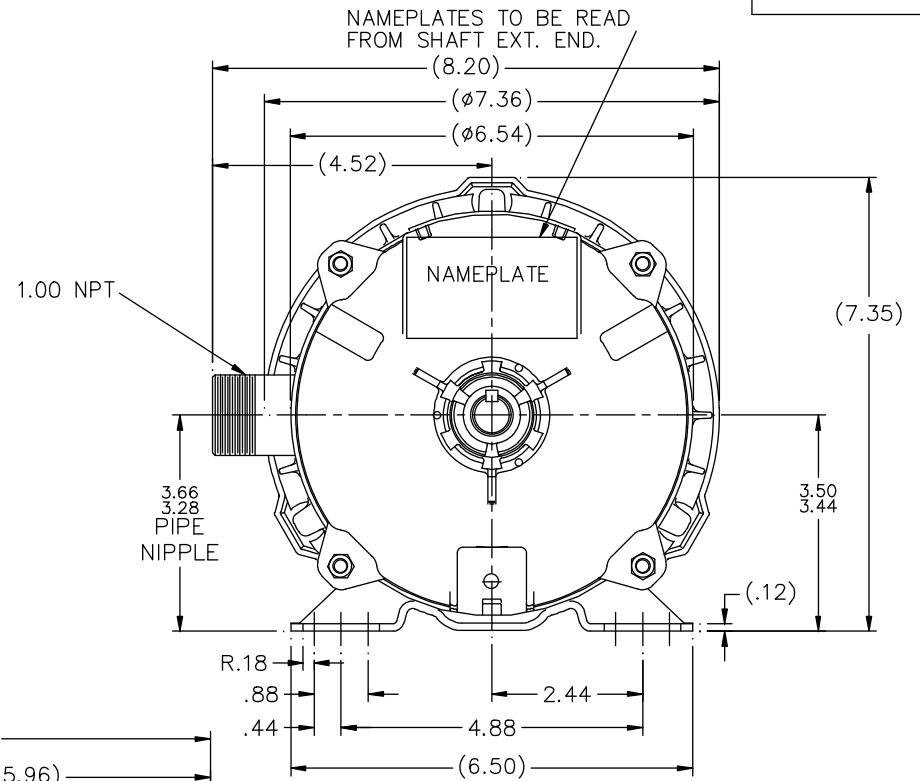
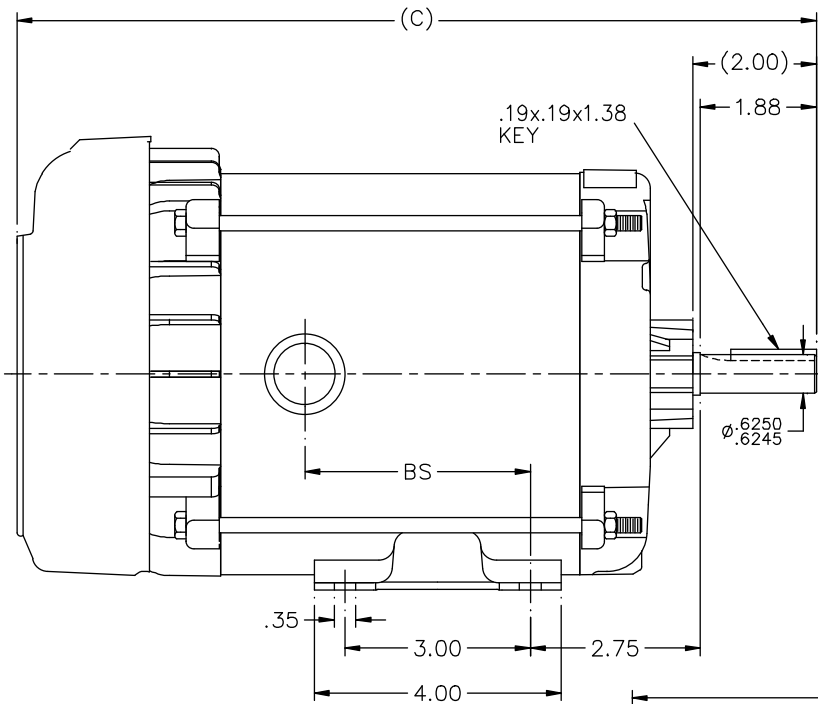


Nameplate Specifications

Output HP	0.33 Hp	Output KW	0.25 kW
Frequency	60 Hz	Voltage	230/460 V
Current	2.2/1.1 A	Speed	1140 rpm
Service Factor	1	Phase	3
Efficiency	62 %	Duty	CONTINUOUS
Insulation Class	F	Design Code	B
KVA Code	M	Frame	56
Enclosure	EPFC	Overload Protector	AUTOMATIC
Ambient Temperature	40 °C	Drive End Bearing Size	6203
Opp Drive End Bearing Size	6203	UL	Recognized
CSA	N	CE	N
IP Code	54		

Technical Specifications

Electrical Type	SQ CAGE IND RUN	Starting Method	ACROSS THE LINE
Poles	6	Rotation	REV
Mounting	RIGID	Motor Orientation	HORIZONTAL
Drive End Bearing	BALL	Opp Drive End Bearing	BALL
Frame Material	ROLLED STEEL	Shaft Type	T
Overall Length	13.44 in	Frame Length	6.31 in
Shaft Diameter	0.63 in	Shaft Extension	2 in
Assembly/Box Mounting	F1 ONLY		
Outline Drawing	B-104189GE-631	Connection Diagram	A-EE7335-GE

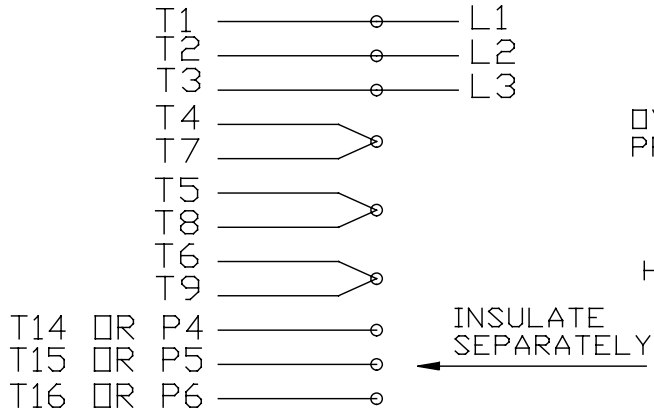


DASH	(C)	BS			
631	13.44	4.15			
681	13.94	4.65			
731	14.44	5.15			
781	14.94	5.65			
831	15.44	6.15			
881	15.94	6.65			
931	16.44	7.15			
981	16.94	7.65			

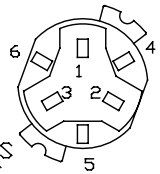
		TOLERANCES UNLESS SPECIFIED		REGAL-BELOIT CORPORATION		DRAWING NO. 11-30-04	
		DEC.	INCHES	REGAL-BELOIT CORPORATION		CHK	ML 01-12-05
4	COND. BOX INSTALLED VIEW UPDATED PER ECR-0044571	UD	10/15/13	ST	.X	±.1	APPD DRN 01-13-05
3	REVISED C'BOX PER CN40784A	JJB	02/23/2007	ML	.XX	±.03	SCALE 1=2
2	CHANGED LOGO TO REGAL BELOIT	TAT	09-07-2005	ML	.XXX	±.005	REF
1	ADD GE TO PART NO	MJK	12/20/2004		.XXXX	±.0005	FMF
NO.	REVISION	BY & DATE	CHK	ANG	±7'30"	FINISH	PREV
THIS DRAWING IN DESIGN AND DETAIL IS OUR PROPERTY AND MUST NOT BE USED EXCEPT IN CONNECTION WITH OUR WORK ALL RIGHTS OF DESIGN AND INVENTION ARE RESERVED THIS IS AN ELECTRONICALLY GENERATED DOCUMENT - DO NOT SCALE THIS PRINT				RFP	CAD FILE 104189ge		SIZE DRAWING NO. PAGE OF REV.
				DIST	WP	B	104189GE 4

EE7335

HIGH VOLTAGE CONNECTIONS

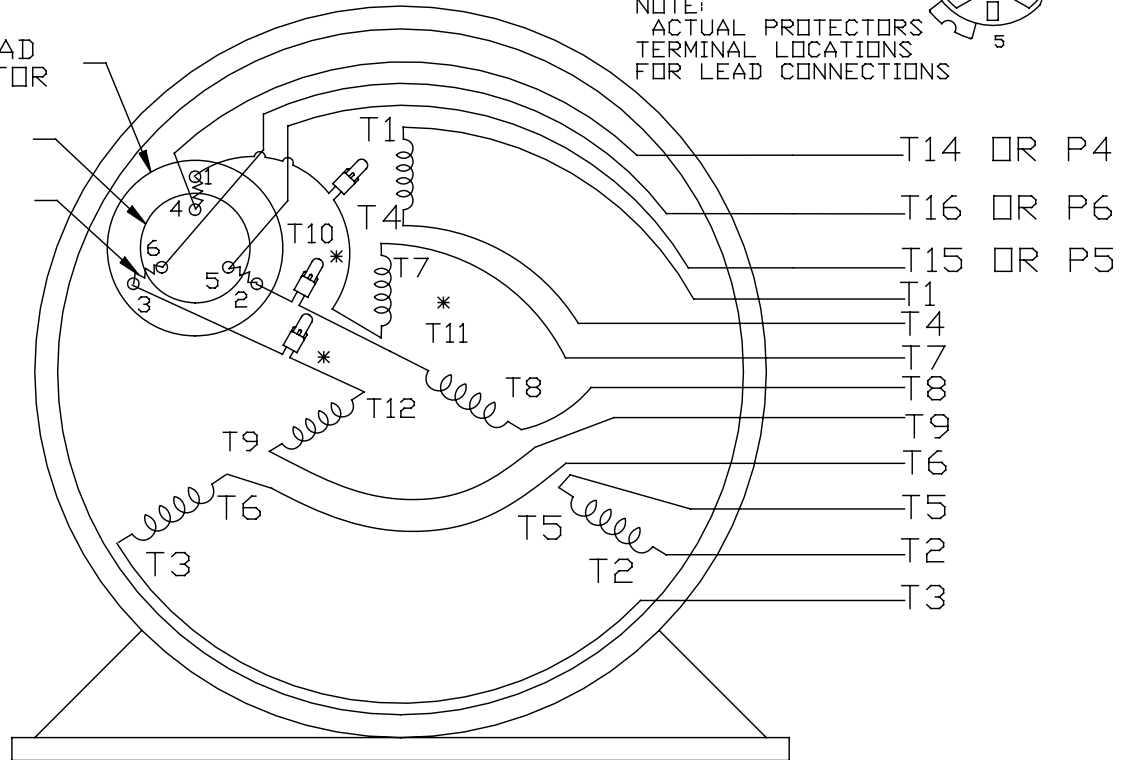


THREE PHASE - DUAL VOLTAGE MOTOR WITH OVERLOAD PROTECTOR



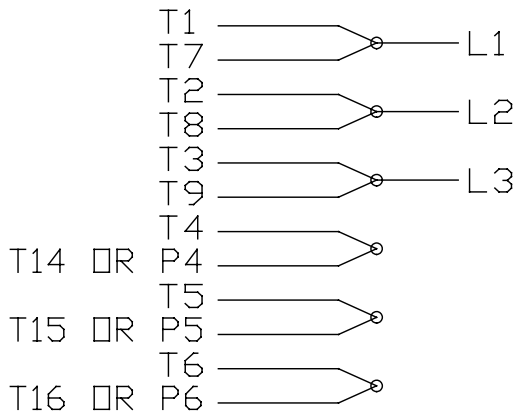
NOTE:
ACTUAL PROTECTORS
TERMINAL LOCATIONS
FOR LEAD CONNECTIONS

OVERLOAD
PROTECTOR
DISC
HEATER




VIEW OF TERMINAL END

LOW VOLTAGE CONNECTIONS



* USE PRESSURE CONNECTORS FOR MT2 PLANT ONLY

T2K
T4D
T6AN

NO.	REVISION	BY & DATE	CHK	TOLERANCES UNLESS SPECIFIED		FINISH	DRAWN	SCALE	REV.	
				DEC.	INCHES					
17	CHANGED LOGO FROM MARATHON TO REGAL	KIR 02/16/16	AB	DEC.	INCHES	 Regal Beloit America, Inc.	KL	08-09-1993		
16	PRESSURE CONNECTORS QUANTITY WAS 6	PVR 10/29/13	GR	.X	±.1		CHK	ML	08/10/1993	
15	PRESSURE CONNECTORS ADDED	GR 03/04/13	SR	.XX	±.01	TITLE		APPD	GK 08/10/1993	
14	ADDED ACTUAL PROECTOR VIEW CN 17481	KL 05/18/94		.XXX	±.005	CONNECTION DIAGRAM		SCALE	1=1	
13	REDRAWN IN AUTO CAD	KL 08/11/93		.XXXX	±.0005	3Ø-DUAL VOLT WITH OVERLOAD PROTECTO		REF		
						MAT'L.		FMF		
								PREV		
				RFP		CAD FILE	EE7335	SIZE	DRAWING NO.	
				DIST				A	EE7335	17

THIS DRAWING IN DESIGN AND DETAIL IS OUR PROPERTY AND MUST NOT BE USED EXCEPT IN CONNECTION WITH OUR WORK ALL RIGHTS OF DESIGN AND INVENTION ARE RESERVED THIS IS AN ELECTRONICALLY GENERATED DOCUMENT - DO NOT SCALE THIS PRINT

CERTIFICATION DATA SHEET

Model#: 5K49FN6381 D WINDING#: ZT805 R2 3
 CONN. DIAGRAM: A-EE7335-GE ASSEMBLY: F1 ONLY
 OUTLINE: B-104189GE-631

TYPICAL MOTOR PERFORMANCE DATA

HP	KW	SYNC. RPM	F.L. RPM	FRAME	ENCLOSURE	KVA CODE	DESIGN
1/3	0.25	1200	1140	56	EPFC	M	B

PH	Hz	VOLTS	FL AMPS	START TYPE	DUTY	INSL	S.F	AMB°C	ELEVATION
3	60	230/460	2.2/1.1	ACROSS THE LINE	CONTINUOUS	F3	1.0	40	3300

FULL LOAD EFF: 62	3/4 LOAD EFF: 58	1/2 LOAD EFF: 49	GTD. EFF	ELEC. TYPE	NO LOAD AMPS
FULL LOAD PF: 48.2	3/4 LOAD PF: 41	1/2 LOAD PF: 33.5	57.5	SQ CAGE IND RUN	2 / 1

F.L. TORQUE	LOCKED ROTOR AMPS	L.R. TORQUE	B.D. TORQUE	F.L. RISE°C
1.5 LB-FT	9.2 / 4.6	5 LB-FT 333	6.4 LB-FT 427	60

SOUND PRESSURE @ 3 FT.	SOUND POWER	ROTOR WK^2	MAX. WK^2	SAFE STALL TIME	STARTS /HOUR	APPROX. MOTOR WGT
62 dBA	72 dBA	0.038 LB-FT^2	15 LB-FT^2	15 SEC.	2	22 LBS.

*** SUPPLEMENTAL INFORMATION ***

DE BRACKET TYPE	ODE BRACKET TYPE	MOUNT TYPE	ORIENTATION	SEVERE DUTY	HAZARDOUS LOCATION	DRIP COVER	SCREENS	PAINT
STANDARD	STANDARD	RIGID	HORIZONTAL	FALSE	EXP PROOF CL I GR C&D CL II GR F&G T3B	FALSE	NONE	GRAY - GE (POWDER)

BEARINGS		GREASE	SHAFT TYPE	SPECIAL DE	SPECIAL ODE	SHAFT MATERIAL	FRAME MATERIAL
DE	OPE	POLYREX EM	T	NONE	NONE	1144 STRESSPROOF (C-223)	ROLLED STEEL
BALL	BALL						
6203	6203						

THERMO-PROTECTORS				THERMISTORS	CONTROL	SPACE /n HEATERS
THERMOSTATS	PROTECTORS	WDG RTDs	BRG RTDs	NONE	FALSE	NONE VOLTS
NONE	AUTOMATIC	NONE	NONE			

If Inverter equals NONE, contact factory for further information

INVERTER TORQUE: NONE
INV. HP SPEED RANGE: NONE
ENCODER: NONE
NONE NONE
NONE NONE PPR
BRAKE: NONE NONE
NONE P/N NONE
NONE NONE
NONE FT-LB NONE V NONE Hz

*
N
O
T
E
S
*

DATE: 06/28/2017 06:52:06 AM
 FORM 3531 REV.3 02/07/99
 ** Subject to change without notice.

Data Sheet

5K49FN6381



Submittal
Data @ 460 V

Date: 6/20/2017

Customer:
Attention:
Submitted by: FAREEDA DUDEKULA

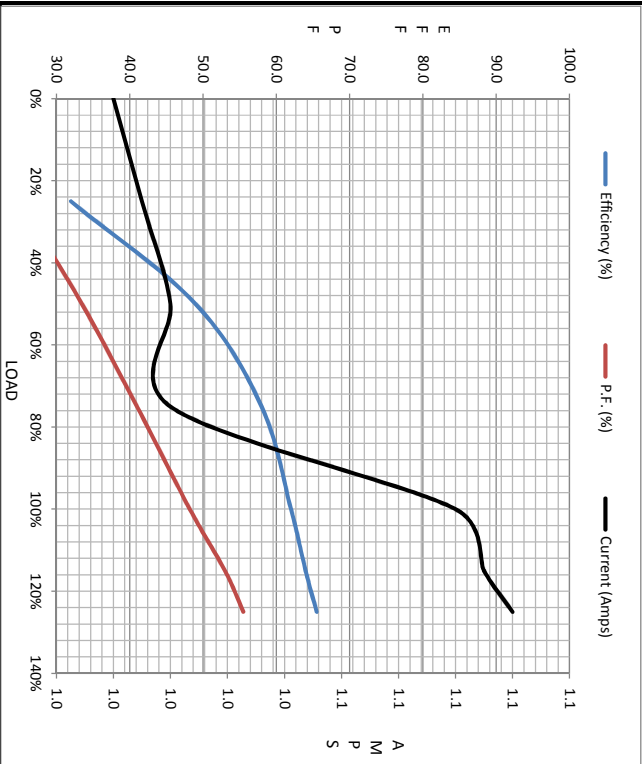
Load	Motor Load Data					LR
	0%	25%	50%	75%	100%	
Current (Amps)	0.96	0.99	1.00	1.00	1.10	4.6
Torque (ft-lb)	0.00	0.35	0.76	1.10	1.50	5.0
RPM	1200	1195	1180	1160	1140	0
Efficiency (%)		32.0	49.0	58.0	62.0	
P.F. (%)	0.0	25.0	33.5	41.0	48.2	53.0

Motor Speed Data

	LR	Pull-Up	BD	Rated	Idle
Speed (rpm)	0	400	920	1140	1200
Current (Amps)	4.6	4.1	3.1	1.10	0.98
Torque (ft-lb)	5.0	4.5	6.4	1.50	0.00

Information Block

HP	0.3			
Sync. RPM	1200			
Frame	56			
Enclosure	EPC			
Construction	TFR			
Voltage	230/460 V			
Frequency	60 HZ			
Design	B			
LR Code letter	M			
Service Factor	1.15			
Temp Rise @ FL	60 °C			
Duty	CONT			
Ambient	40 °C			
Elevation	1,000 feet			
Rotor/Shaft wkt	0.04 Lb-Fe			
Ret Wdg	ZT605 R2			
Sound Pressure @ 1M	62 dbA			
VFD Rating	NONE			
Outline Dwg	B-104189GE-631			
Conn. Diag	A-EE7335-GE			
Additional Specifications:				
EQUIV CKT (OHMS / PHASE)				
R1	R2	X1	X2	Xm
0.0000	0.0000	0.0000	0.0000	0.0000



Speed - Torque Curve

