

# PRODUCT INFORMATION PACKET

Model No: 5KH37PN33X  
Catalog No: H172  
1/4-1/12,1725/1140,DP,48Z,1/60/115  
Fan and Blower



Regal and Marathon are trademarks of Regal Beloit Corporation or one of its affiliated companies.

©2018 Regal Beloit Corporation, All Rights Reserved. MC017097E





### Nameplate Specifications

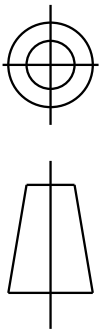
Output HP	<b>0.25,0.08 Hp</b>	Output KW	<b>0.19 kW</b>
Frequency	<b>60 Hz</b>	Voltage	<b>115 V</b>
Current	<b>4.2,2.7 A</b>	Speed	<b>1725,1140 rpm</b>
Service Factor	<b>1.35</b>	Phase	<b>1</b>
Efficiency	<b>58 %</b>	Duty	<b>CONT</b>
Insulation Class	<b>B</b>	Design Code	<b>-</b>
KVA Code	<b>M</b>	Frame	<b>48Z</b>
Enclosure	<b>DP</b>	Overload Protector	<b>AUTO</b>
Ambient Temperature	<b>40 °C</b>	Drive End Bearing Size	<b>6203</b>
Opp Drive End Bearing Size	<b>6203</b>	UL	<b>Recognized</b>
CSA	<b>Yes</b>	CE	<b>N</b>

### Technical Specifications

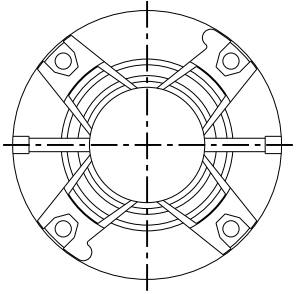
Electrical Type	<b>Split Phase</b>	Starting Method	<b>SM</b>
Poles	<b>4</b>	Rotation	<b>CW/CCW</b>
Mounting	<b>RB</b>	Motor Orientation	<b>ANY</b>
Drive End Bearing	<b>BALL</b>	Opp Drive End Bearing	<b>BALL</b>
Frame Material	<b>Rolled Steel</b>	Overall Length	<b>10.69 in</b>
Frame Length	<b>6.62 in</b>	Shaft Diameter	<b>0.5 in</b>
Shaft Extension	<b>1.88 in</b>	Thru-bolts Extension	<b>0</b>
Outline Drawing	<b>52A102396P1</b>	Connection Diagram	<b>52A105385AA</b>

This is an uncontrolled document once printed or downloaded and is subject to change without notice. Date Created: 04/06/2018

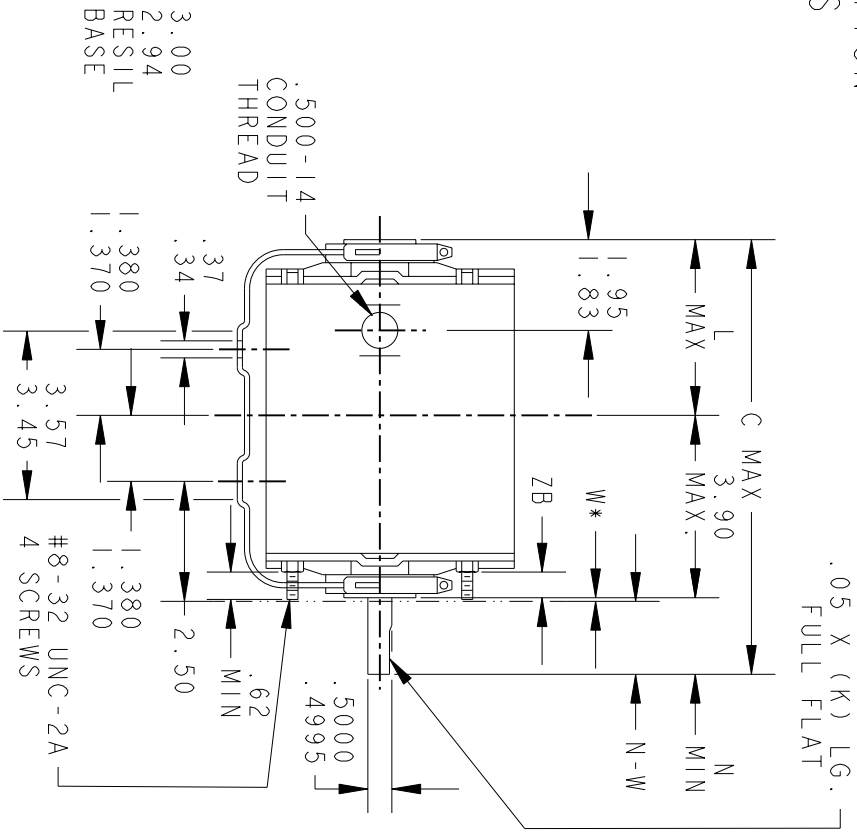
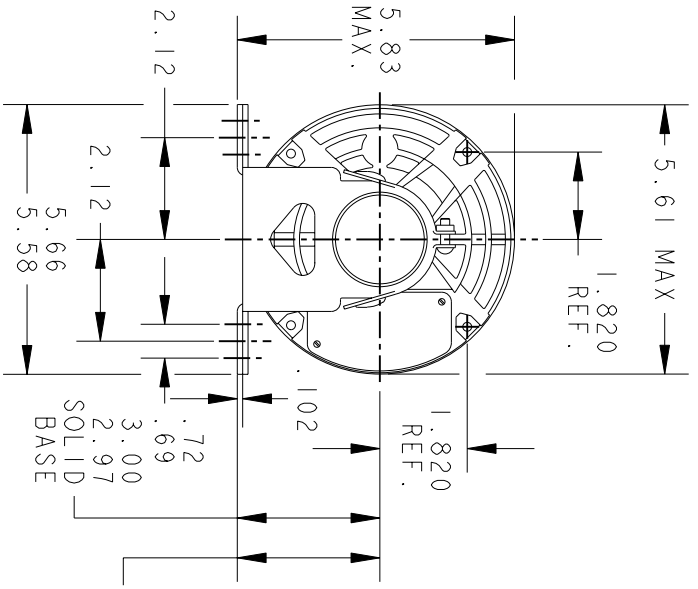
THIRD ANGLE PROJECTION



REVISIONS		DESCRIPTION	DATE	APPROVED
4	REV.	REDRAWN NO CHANGE T196-22390	07/10/96	M. D. P
5	CHG TO RBC FORMAT AS PER IS05-1777		12/30/05	GOVARDAN



VIEW SHOWING  
PE VENTILATION  
OPENINGS



\*W IS A CLEARANCE DUE TO VARIATION IN PARTS & ASSEMBLY.

PT	TYPE	GE SIZE	NEMA FR	K	L	N	N-W	ZB	
1	KH	37	48	10.69	1.54	5.05	1.88	2.01/1.79	.55/.52

SIGNATURES		DATE
MODEL	H.0	08/24/77
DETAIL		
CHECKED		
ENGRG		
MFG		
QUALITY		
ISSUED	M. D. P	07/10/96
SOLID MODEL:	52A102396	

**REGAL-BELOTT CORPORATION**

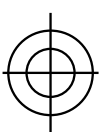
**OUTLINE**

**FORM N - GENERAL PURPOSE MOTOR - DRIP PROOF - SOLID OR RESIL BASE - BALL OR SLEEVE BEARING**

SCALE: 0.250 REF. No.: .

SIZE: DRAWING A

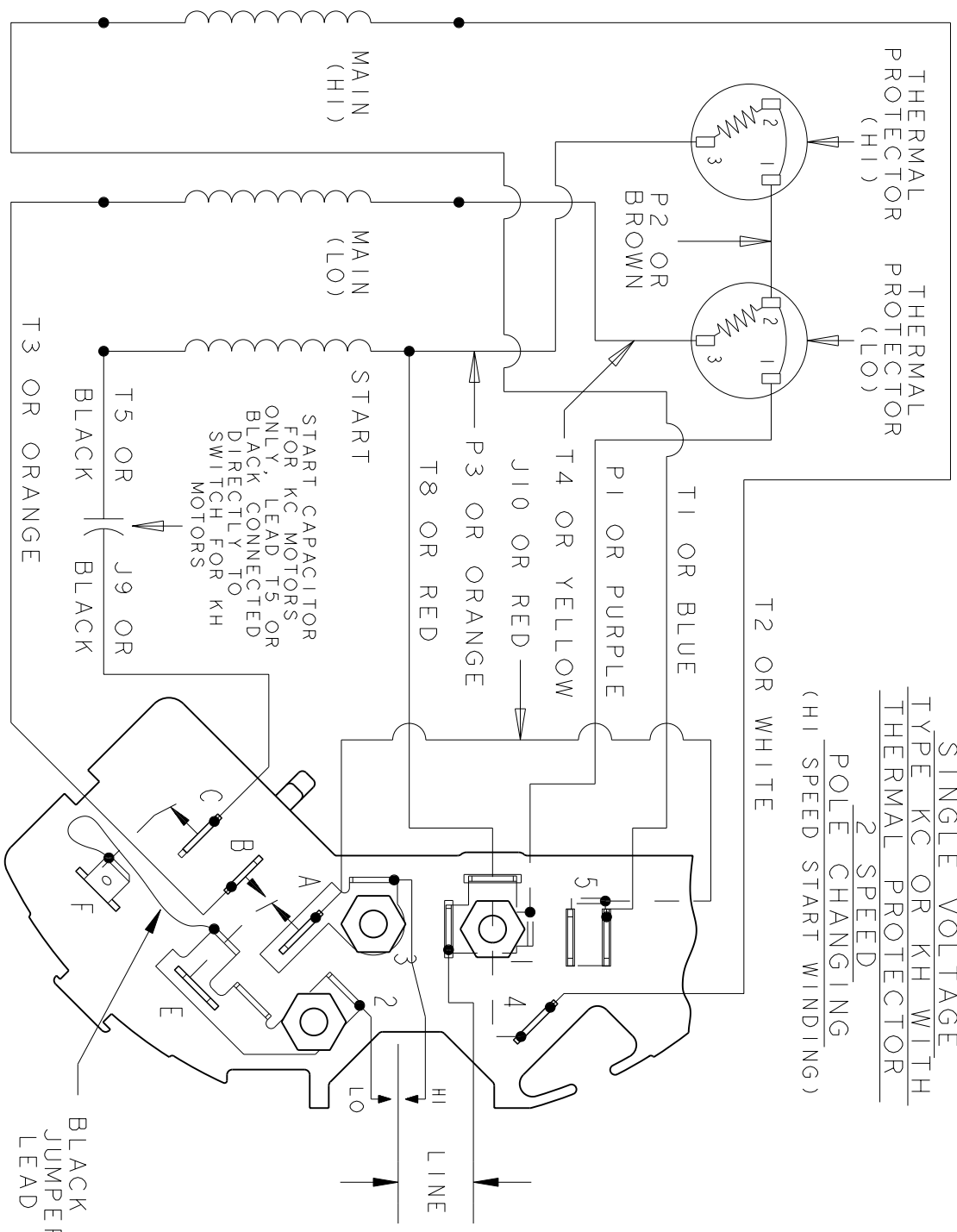
REV 5



THIRD ANGLE PROJECTION

REVISIONS		DATE	APPROVED
REV.	DESCRIPTION		
3	UPDATED FORMAT	12/19/05	MAM

EITHER ROTATION  
 SINGLE VOLTAGE  
 TYPE KC OR KH WITH  
 THERMAL PROTECTOR  
 2 SPEED  
 POLE CHANGING  
 (HI SPEED START WINDING)



NOTE #1 - TO REVERSE ROTATION INTERCHANGE BLUE (T1) AND WHITE (T2) LEADS.  
 NOTE #2 - WHEN MORE THAN ONE CAPACITOR IS USED CONNECT IN PARALLEL.

REF. DIAG. - 121A864

SWITCH (D) - 115D958BA  
 CONNECTION LABEL - 52X332052

SIGNATURES		DATE
MODEL	M.D. PAPE	11/20/87
DETAIL		
CHECKED		
ENGRG		
MFG		
QUALITY		
ISSUED	M.D. P.	11/20/87
APPLIED PRACTICES		
DIMENSIONS ARE IN INCHES		
MATERIAL	SOLID MODEL: 52A105385AA	

**REGAL-BELOIT CORPORATION**

**REGAL-BELOIT CORPORATION**

**CONNECTION DIAGRAM**

**FMF: 30 FRAME SWITCH REDESIGN**

SIZE DRAWING A

SCALE: 1.000 REF. No.:

REV 3