

PRODUCT INFORMATION PACKET

marathon®
Motors

Model No: 048S17T290
Catalog No: O601
1/6,1800,TENV,48N,1/60/115
Single Phase



Regal and Marathon are trademarks of Regal Beloit Corporation or one of its affiliated companies.

©2018 Regal Beloit Corporation, All Rights Reserved. MC017097E

REGAL

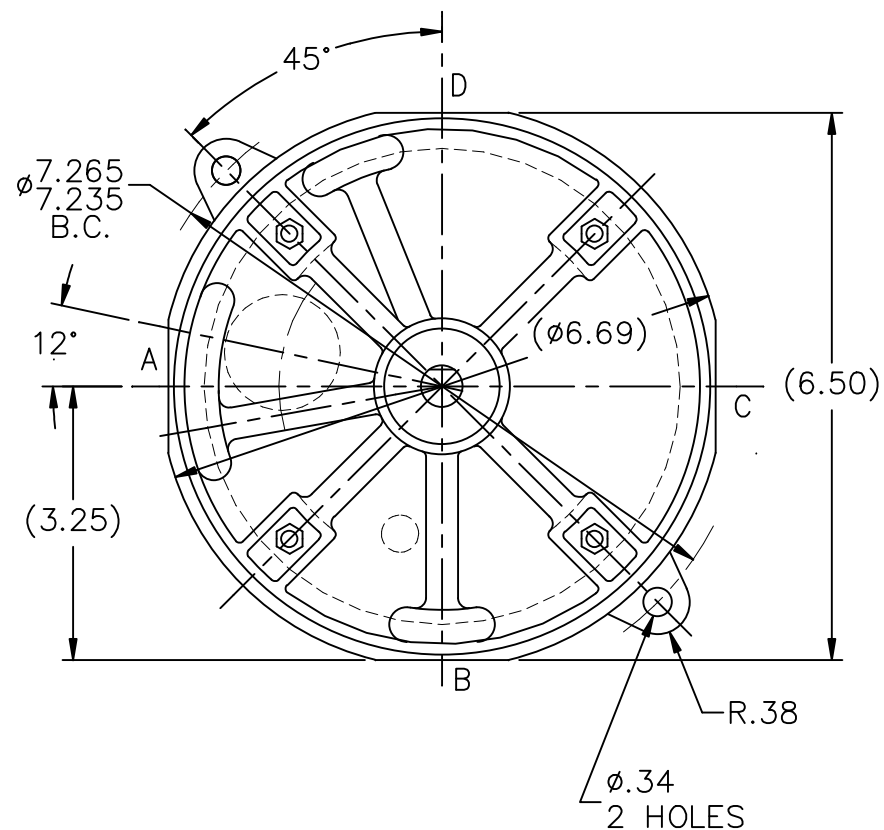
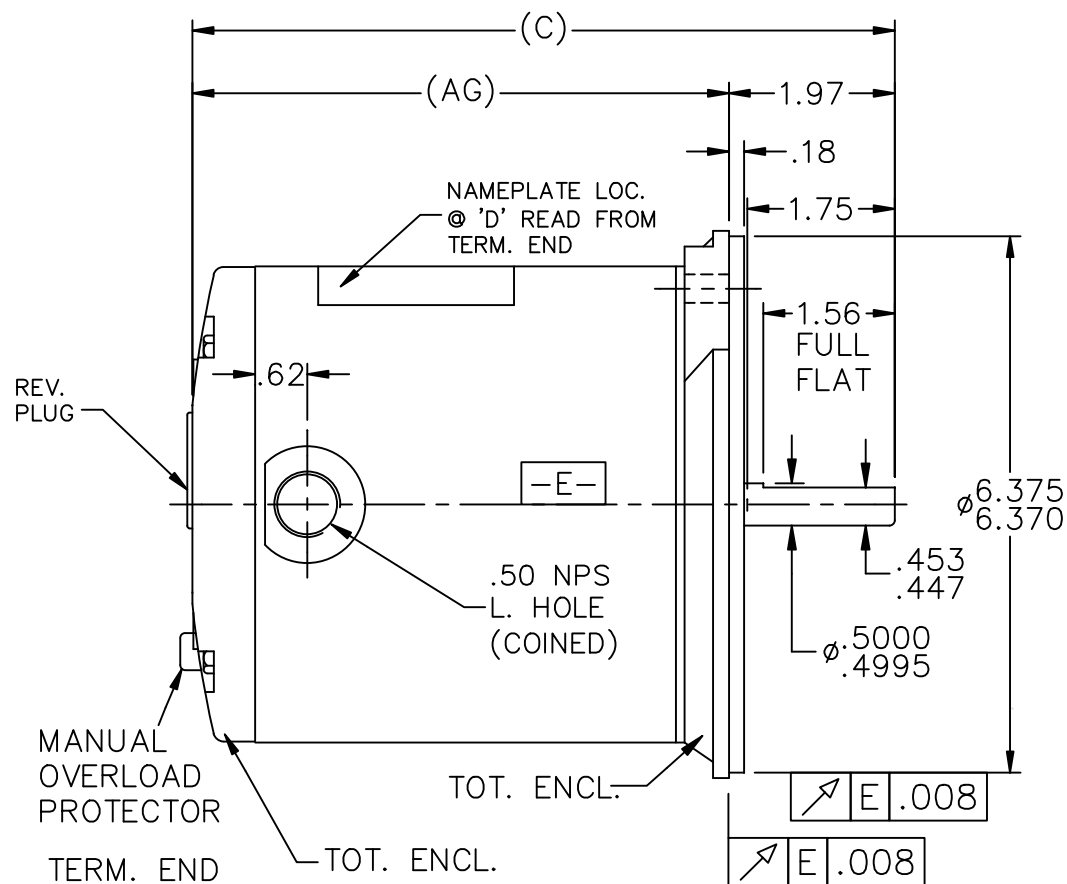


Nameplate Specifications

Output HP	0.17 Hp	Output KW	0.13 kW
Frequency	60 Hz	Voltage	115 V
Current	2.95 A	Speed	1725 rpm
Service Factor	1	Phase	1
Efficiency	58.2 %	Duty	CONTINUOUS
Insulation Class	B	Design Code	NO DESIGN CODE
KVA Code	S	Frame	48NZ
Enclosure	TENV	Overload Protector	MANUAL
Ambient Temperature	40 °C	Drive End Bearing Size	6203
Opp Drive End Bearing Size	6203	UL	Recognized
CSA	Y	CE	Y
IP Code	43		


Technical Specifications

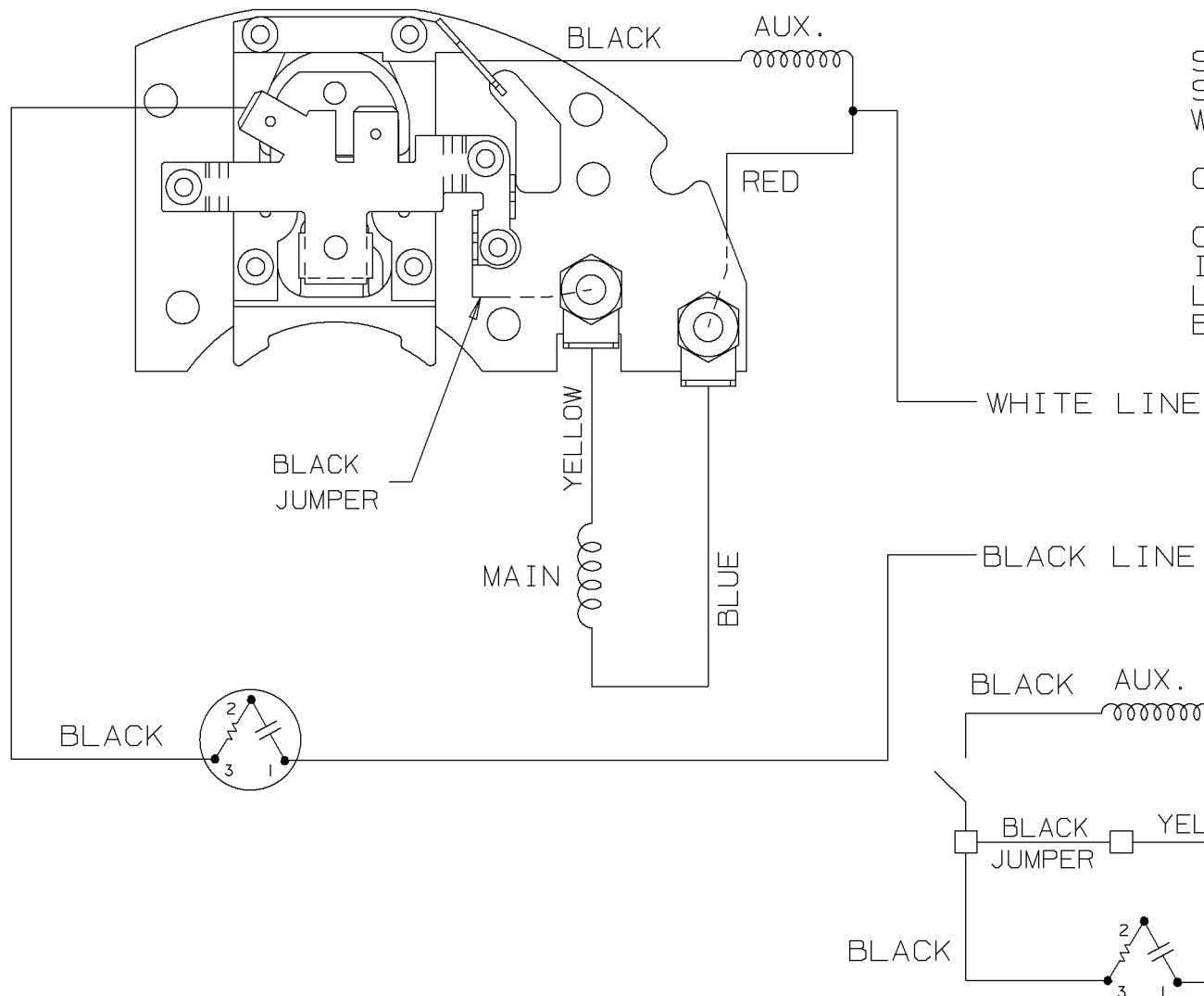
Electrical Type	SPLIT PHASE	Starting Method	ACROSS THE LINE
Poles	4	Rotation	SELECTIVE CW
Mounting	ROUND	Motor Orientation	HORIZONTAL
Drive End Bearing	BALL	Opp Drive End Bearing	BALL
Frame Material	ROLLED STEEL	Shaft Type	SGL SPL EXT
Overall Length	7.59 in	Frame Length	4.25 in
Shaft Diameter	0.5 in	Shaft Extension	1.97 in
Assembly/Box Mounting	F1 ONLY		
Outline Drawing	A-SS403841-425	Connection Diagram	A-EE7154CA



DASH	C	AG	DASH	C	AG
375	7.09	5.12	450	7.84	5.87
400	7.34	5.37	475	8.09	6.12
425	7.59	5.62	500	8.34	6.37

LEAD DESCRIPTION:
1 WHITE, AND 1 BLACK LEAD WITH
.50 BARE WIRE STRIP 20.00" LONG.

				TOLERANCES UNLESS SPECIFIED			DRAWN NB 04-02-2009			
				DEC.	INCHES		CHK RAD 04-02-2009			
				.X	±.1		APPD NB 04-02-2009			
				.XX	±.03		SCALE 7=16			
				.XXX	±.005		REF SS403833			
1	CHG'D OPEN TO TOT. ENCL. ISAAC 11-2360		KBB 05-25-2011	EH	.XXXX ±.0005	MAT'L.			FMF 09-0323	
NO.	REVISION		BY & DATE	CHK	ANG ±7'30"	FINISH			PREV	
THIS DRAWING IN DESIGN AND DETAIL IS OUR PROPERTY AND MUST NOT BE USED EXCEPT IN CONNECTION WITH OUR WORK ALL RIGHTS OF DESIGN AND INVENTION ARE RESERVED THIS IS AN ELECTRONICALLY GENERATED DOCUMENT – DO NOT SCALE THIS PRINT				RFP 04-02-2009		CAD FILE SS403841		SIZE A	DRAWING NO. PAGE OF SS403841	REV. 1
				DIST WP						

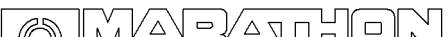


SINGLE HIGH VOLTAGE
SPLIT PHASE MOTOR
WITH OVERLOAD PROTECTOR

CW ROTATION SHOWN

CCW ROTATION -
INTERCHANGE YELLOW & BLUE
LEADS ON THE TERMINAL
BOARD.

NOTE: LEAD COLOR CHANGED FROM
EE7154BS.

3	08-22-2001	REVERSED SOLDER POST POSITION ON SWITCH ASSEMBLY CN 34233	TJB	✓ MAX. SURFACE ROUGHNESS UNLESS NOTED OTHERWISE	UNLESS OTHERWISE SPECIFIED DIMENSIONS ARE IN INCHES TOL. ON XX± XXX±.005 XXXX±.0005 ANGLES±			
2	06-08-2001	ADDED BLACK JUMPER LABEL	DRS	MATL SPEC	REPLACES A-EE7154BS & EE7154BT		DRAWN BY TJB	04-27-2001
				FINISH			CHKD BY ML	05-23-2001
1	05-23-2001	NEW DRAWING	TJB	REFERENCE DRW.			WAUSAU, WISCONSIN 54401	APPD BY JPL
REV	DATE	CHANGE	NAME	PART NAME CONNECTION DIAGRAM				DRWG NO A-EE7154CA

CERTIFICATION DATA SHEET

CUSTOMER:
ORDER #:

CUSTOMER PO#:

MODEL #: 48S17T290

CUSTOMER PART #:

CONN. DIAGRAM: [A-EE7154CA](#)

OUTLINE: A-SS403841-425

MOUNTING: F1 ONLY

WINDING #: SE48475 3

TYPICAL MOTOR PERFORMANCE DATA

HP	KW	SYNC. RPM	F.L. RPM	FRAME	ENCLOSURE	KVA CODE	DESIGN
1/6	0.13	1800	1725	48NZ	TENV	S	NO DESIGN CODE

PH	HZ	VOLTS	AMPS	START TYPE	DUTY	INSL	S.F.	AMB°C
1	60	1.15	2.95	ACROSS THE LINE	CONTINUOUS	B3	1.0	40

FULL LOAD EFF:	58.2	3/4 LOAD EFF:	-	1/2 LOAD EFF:	-	GTD. EFF	ELEC. TYPE
FULL LOAD PF:	-	3/4 LOAD PF:	-	1/2 LOAD PF:	-	-	SPLIT PHASE

F.L. TORQUE	LOCKED ROTOR AMPS	L.R. TORQUE	B.D. TORQUE	F.L. RISE°C
8.14 OZ-FT	25.2	15.8 OZ-FT - %	17 OZ-FT - %	-

SOUND PRESSURE @ 3 FT.	SOUND POWER	ROTOR WK ²	MAX. WK ²	SAFE STALL TIME	STARTS / HOUR	APPROX. MOTOR WGT
- dBA	- dBA	- LB-FT ²	- LB-FT ²	- SEC.	-	- LBS.

*** SUPPLEMENTAL INFORMATION ***

DE BRACKET TYPE	ODE BRACKET TYPE	MOUNT TYPE	ORIENTATION	SEVERE DUTY	HAZARDOUS LOCATION	DRIP COVER	SCREENS	PAINT
N-FLANGE	STANDARD	ROUND	HORIZONTAL	FALSE	NONE	FALSE	NONE	BLACK (POWDER)

BEARINGS		GREASE	SHAFT TYPE	SPECIAL DE	SPECIAL ODE	SHAFT MATERIAL	FRAME MATERIAL
DE	ODE						
BALL 6203	BALL 6203	MULTEMP SRL	SGL SPL EXT	0.500 x 1.75 IN SEF WITH 1.56 IN FULL FLAT	NONE	I144 STRESSPROOF (C- 223)	ROLLED STEEL

THERMO-PROTECTORS				THERMISTORS	CONTROL	SPACE HEATERS
THERMOSTATS	PROTECTORS	WDG RTDS	BRG RTDS			
NONE	MANUAL	NONE	NONE	NONE	FALSE	NONE VOLTS

INVERTER TORQUE: NONE
INV. HP SPEED RANGE: NONE

ENCODER:	
NONE	NONE
NONE	NONE
NONE	PPR

BRAKE:	NONE	NONE
NONE	P/N	NONE
NONE	NONE	
NONE	FT-LB	NONE V NONE HZ

5

*

PREPARED BY: Gosula Reddy

Srikanth **DATE:**

06/29/2017 01:46:57 AM

FORM 3531 REV.3 02/07/99

**** Subject to change without notice.**