

# PRODUCT INFORMATION PACKET

Model No: 213THTL7736  
Catalog No: Y560  
7 1/2,1800,TENV,213TC,3/60/575  
1000:1 Speed Ratio



Regal and Marathon are trademarks of Regal Beloit Corporation or one of its affiliated companies.  
©2018 Regal Beloit Corporation, All Rights Reserved. MC017097E



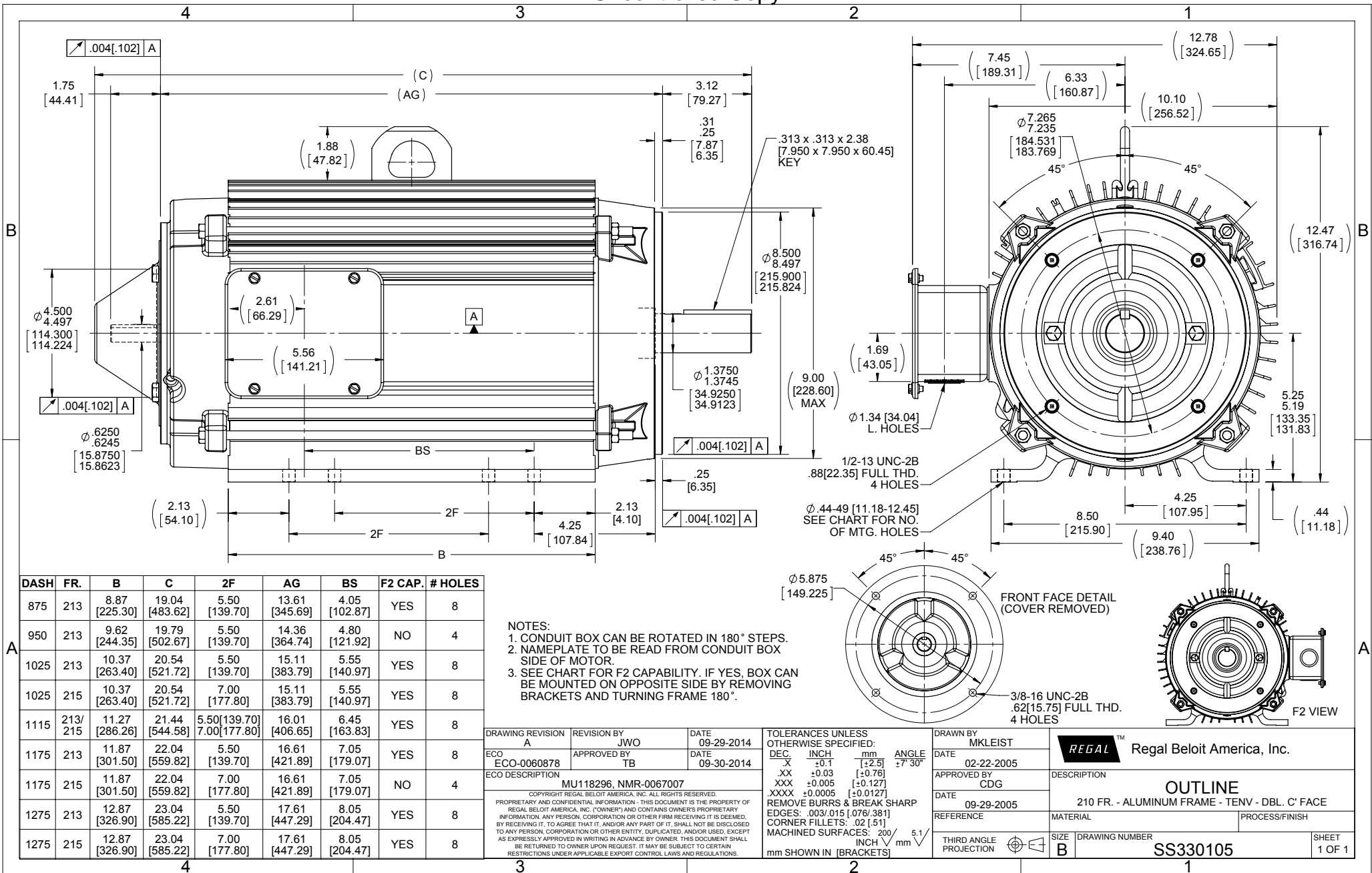
### Nameplate Specifications

Output HP	<b>7.5 Hp</b>	Output KW	<b>5.6 kW</b>
Frequency	<b>60 Hz</b>	Voltage	<b>575 V</b>
Current	<b>8.4 A</b>	Speed	<b>1765 rpm</b>
Service Factor	<b>1</b>	Phase	<b>3</b>
Efficiency	<b>90.2 %</b>	Duty	<b>CONTINUOUS</b>
Insulation Class	<b>F</b>	Design Code	<b>INV</b>
KVA Code	<b>L</b>	Frame	<b>213TC</b>
Enclosure	<b>TENV</b>	Overload Protector	<b>NOT</b>
Ambient Temperature	<b>40 °C</b>	Drive End Bearing Size	<b>6309</b>
Opp Drive End Bearing Size	<b>6206</b>	UL	<b>Recognized</b>
CSA	<b>Y</b>	CE	<b>Y</b>
IP Code	<b>43</b>		

### Technical Specifications

Electrical Type	<b>SQ CAGE INV DUTY</b>	Starting Method	<b>INVERTER ONLY</b>
Poles	<b>4</b>	Rotation	<b>REV</b>
Mounting	<b>RIGID</b>	Motor Orientation	<b>HORIZONTAL</b>
Drive End Bearing	<b>BALL</b>	Opp Drive End Bearing	<b>BALL</b>
Frame Material	<b>ALUMINUM</b>	Shaft Type	<b>T</b>
Overall Length	<b>20.54 in</b>	Frame Length	<b>10.25 in</b>
Shaft Diameter	<b>1.38 in</b>	Shaft Extension	<b>3.12 in</b>
Assembly/Box Mounting	<b>F1/F2 CAPABLE</b>		
Outline Drawing	<b>B-SS330105-1025</b>	Connection Diagram	<b>A-EE7300T</b>

This is an uncontrolled document once printed or downloaded and is subject to change without notice. Date Created: 04/05/2018



DASH	FR.	B	C	2F	AG	BS	F2 CAP.	# HOLES
875	213	8.87 [225.30]	19.04 [483.62]	5.50 [139.70]	13.61 [345.69]	4.05 [102.87]	YES	8
950	213	9.62 [244.35]	19.79 [502.67]	5.50 [139.70]	14.36 [364.74]	4.80 [121.92]	NO	4
1025	213	10.37 [263.40]	20.54 [521.72]	5.50 [139.70]	15.11 [383.79]	5.55 [140.97]	YES	8
1025	215	10.37 [263.40]	20.54 [521.72]	7.00 [177.80]	15.11 [383.79]	5.55 [140.97]	YES	8
1115	213/ 215	11.27 [286.26]	21.44 [544.58]	5.50[139.70] 7.00[177.80]	16.01 [406.65]	6.45 [163.83]	YES	8
1175	213	11.87 [301.50]	22.04 [559.82]	5.50 [139.70]	16.61 [421.89]	7.05 [179.07]	YES	8
1175	215	11.87 [301.50]	22.04 [559.82]	7.00 [177.80]	16.61 [421.89]	7.05 [179.07]	NO	4
1275	213	12.87 [326.90]	23.04 [585.22]	5.50 [139.70]	17.61 [447.29]	8.05 [204.47]	YES	8
1275	215	12.87 [326.90]	23.04 [585.22]	7.00 [177.80]	17.61 [447.29]	8.05 [204.47]	YES	8

- NOTES:  
 1. CONDUIT BOX CAN BE ROTATED IN 180° STEPS.  
 2. NAMEPLATE TO BE READ FROM CONDUIT BOX SIDE OF MOTOR.  
 3. SEE CHART FOR F2 CAPABILITY. IF YES, BOX CAN BE MOUNTED ON OPPOSITE SIDE BY REMOVING BRACKETS AND TURNING FRAME 180°.

DRAWING REVISION A	REVISION BY JWO	DATE 09-29-2014
ECO ECO-0060878	APPROVED BY TB	DATE 09-30-2014
ECO DESCRIPTION MU118296, NMR-0067007		

COPYRIGHT REGAL BELOIT AMERICA, INC. ALL RIGHTS RESERVED.  
 PROPRIETARY AND CONFIDENTIAL INFORMATION - THIS DOCUMENT IS THE PROPERTY OF REGAL BELOIT AMERICA, INC. (OWNER) AND CONTAINS OWNER'S PROPRIETARY INFORMATION. ANY PERSON, CORPORATION OR OTHER FIRM RECEIVING IT IS DEEMED, BY RECEIVING IT, TO AGREE THAT IT, AND/OR ANY PART OF IT, SHALL NOT BE DISCLOSED TO ANY PERSON, CORPORATION OR OTHER ENTITY, DUPLICATED, AND/OR USED, EXCEPT AS EXPRESSLY APPROVED IN WRITING IN ADVANCE BY OWNER. THIS DOCUMENT SHALL BE RETURNED TO OWNER UPON REQUEST. IT MAY BE SUBJECT TO CERTAIN RESTRICTIONS UNDER APPLICABLE EXPORT CONTROL LAWS AND REGULATIONS.

TOLERANCES UNLESS OTHERWISE SPECIFIED:	ANGLE
DEC. INCH mm	±7° 30'
.X ±0.1 [±2.5]	
.XX ±0.03 [±0.76]	
.XXX ±0.005 [±0.127]	
.XXXX ±0.0005 [±0.0127]	
REMOVE BURRS & BREAK SHARP EDGES: .003/.015 [0.076/ 381]	
CORNER FILLETS: .02 [51]	
MACHINED SURFACES: 200 INCH/mm 5.1	
mm SHOWN IN [BRACKETS]	

DRAWN BY MKLEIST	DATE 02-22-2005
APPROVED BY CDG	DATE 09-29-2005
REFERENCE	THIRD ANGLE PROJECTION

**REGAL™** Regal Beloit America, Inc.

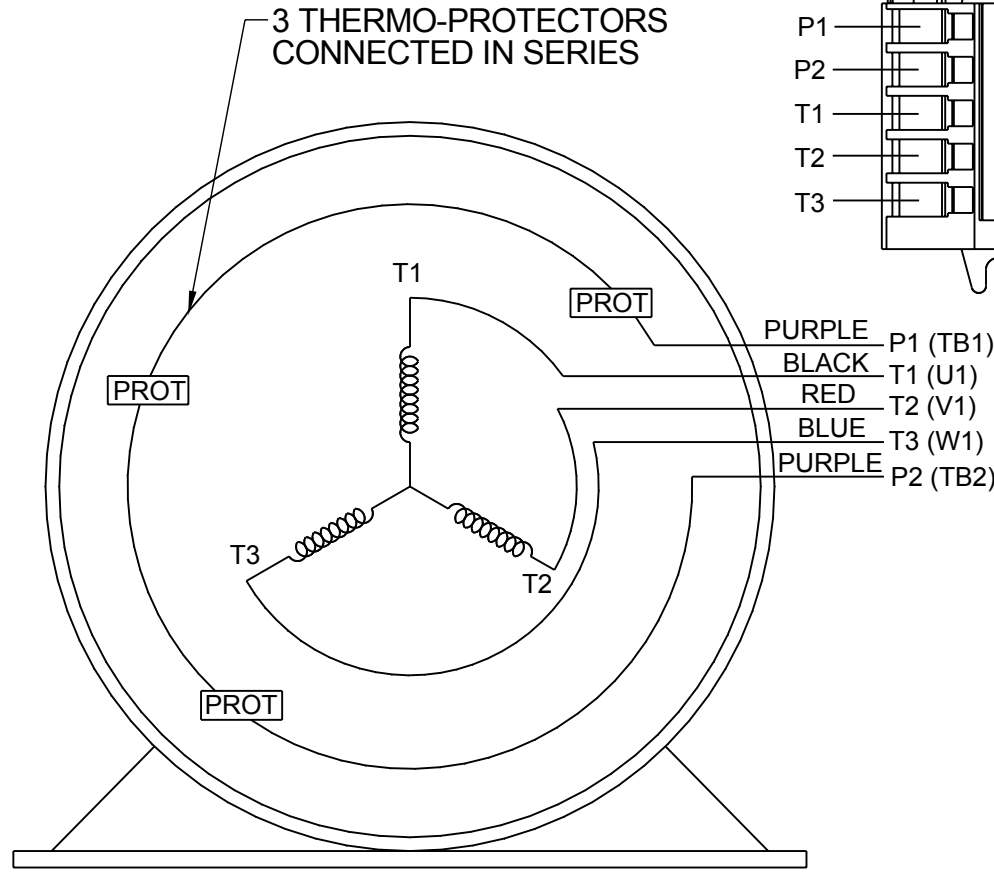
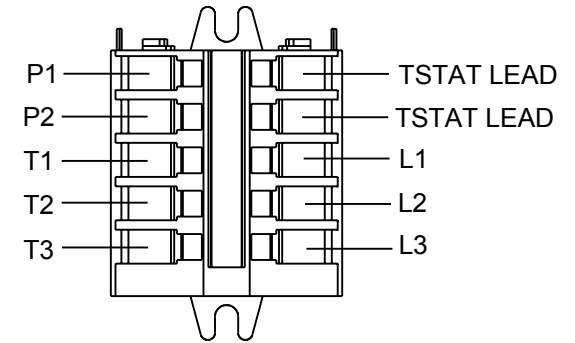
DESCRIPTION 210 FR. - ALUMINUM FRAME - TENV - DBL. C' FACE	PROCESS/FINISH
MATERIAL	DRAWING NUMBER SS330105
SIZE B	SHEET 1 OF 1

**THREE PHASE - SINGLE VOLTAGE  
MOTOR - CONDUIT BOX @ 'A'**

**TO REVERSE ROTATION:  
INTERCHANGE ANY TWO LINE  
LEAD CONNECTIONS**

**NOTE FOR FACTORY USE ONLY:  
TO SURGE TEST:  
FOR 3 LEAD COMMON CONNECT:  
CONNECT P1 TO T1 THEN P2 TO L1  
FOR 6 LEAD COMMON CONNECT:  
CONNECT P1 TO BOTH T1  
THEN P2 TO L1**

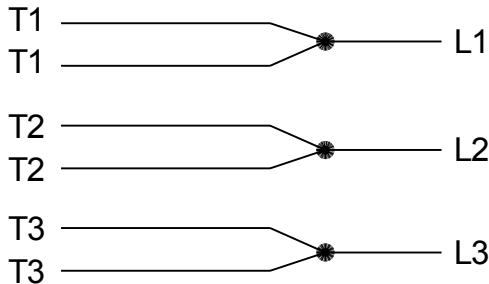
TERMINAL BLOCK WHEN SPECIFIED



PURPLE P1 (TB1)  
BLACK T1 (U1)  
RED T2 (V1)  
BLUE T3 (W1)  
PURPLE P2 (TB2)

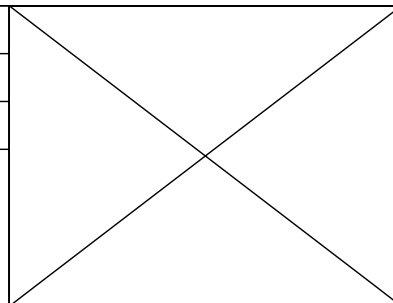
T2BM  
T6AW  
T6AL  
T6Z  
T4EG  
T4BF  
T8A  
T6H  
T6A  
T4AX  
T4A  
T2A  
T2F

**IF MOTOR HAS MULTIPLE  
T'S PER LEAD CONNECT  
TOGETHER LIKE T'S**



**A-9806 DECAL**

DRAWING REVISION AB	REVISION BY AJW	DATE 07-17-2015
ECO ECO-0081632	APPROVED BY T.VUE	DATE 07-17-2015
ECO DESCRIPTION REV'D IEC MARKINGS PER IEC-60034-8		
<small>COPYRIGHT REGAL BELOIT AMERICA, INC. ALL RIGHTS RESERVED. PROPRIETARY AND CONFIDENTIAL INFORMATION - THIS DOCUMENT IS THE PROPERTY OF REGAL BELOIT AMERICA, INC. ("OWNER") AND CONTAINS OWNER'S PROPRIETARY INFORMATION. ANY PERSON, CORPORATION OR OTHER FIRM RECEIVING IT IS DEEMED, BY RECEIVING IT, TO AGREE THAT IT, AND/OR ANY PART OF IT, SHALL NOT BE DISCLOSED TO ANY PERSON, CORPORATION OR OTHER ENTITY, DUPLICATED, AND/OR USED, EXCEPT AS EXPRESSLY APPROVED IN WRITING IN ADVANCE BY OWNER. THIS DOCUMENT SHALL BE RETURNED TO OWNER UPON REQUEST. IT MAY BE SUBJECT TO CERTAIN RESTRICTIONS UNDER APPLICABLE EXPORT CONTROL LAWS AND REGULATIONS.</small>		



DRAWN BY LZ	<b>Regal Beloit America, Inc.</b>	
DATE 01-04-1994		
APPROVED BY GK	DESCRIPTION <b>CONN DIAGRAM-EXTERNAL</b> 3Ø-SINGLE VOLT-MOTOR WITH PROTECTOR	
DATE 01-20-1994	MATERIAL	
REFERENCE	PROCESS/FINISH	
THIRD ANGLE PROJECTION	SIZE <b>A</b>	DRAWING NUMBER <b>EE7300T</b>
		SHEET 1 OF 1

CERTIFICATION DATA SHEET

Model#: 213HTL7736 AC WINDING#: K2134177 NONE 5  
 CONN. DIAGRAM: A-EE7300T ASSEMBLY: F1/F2 CAPABLE  
 OUTLINE: B-SS330105-1025

TYPICAL MOTOR PERFORMANCE DATA

HP	KW	SYNC. RPM	F.L. RPM	FRAME	ENCLOSURE	KVA CODE	DESIGN			
7 1/2	5.60	1800	1765	213TC	TENV	L	INV			
PH	Hz	VOLTS	FL AMPS	START TYPE	DUTY	INSL	S.F	AMB°C	ELEVATION	
3	60	575	8.4	INVERTER ONLY	CONTINUOUS	F3	1.0	40	3300	
FULL LOAD EFF: 90.2		3/4 LOAD EFF: 89.5		1/2 LOAD EFF: 87.5		GTD. EFF		ELEC. TYPE		NO LOAD AMPS
FULL LOAD PF: 76		3/4 LOAD PF: 69		1/2 LOAD PF: 56.5		88.5		SQ CAGE INV DUTY		4.4
F.L. TORQUE		LOCKED ROTOR AMPS		L.R. TORQUE		B.D. TORQUE		F.L. RISE°C		
22.3 LB-FT		72		59.5 LB-FT 267		95.5 LB-FT 428		80		
SOUND PRESSURE @ 3 FT.	SOUND POWER	ROTOR WK^2	MAX. WK^2	SAFE STALL TIME	STARTS /HOUR	APPROX. MOTOR WGT				
62 dBA	72 dBA	0.9 LB-FT^2	0 LB-FT^2	0 SEC.	0	150 LBS.				

EQUIVALENT WYE CKT.PARAMETERS (OHMS PER PHASE)

R1	R2	X1	X2	XM
0.6993	0.567	1.76526	2.26044	38.178
RM	ZREF	XR	TD	TD0
1946.7	37.8	3.2	0.0108	0.189

\*\*\* SUPPLEMENTAL INFORMATION \*\*\*

DE BRACKET TYPE	ODE BRACKET TYPE	MOUNT TYPE	ORIENTATION	SEVERE DUTY	HAZARDOUS LOCATION	DRIP COVER	SCREENS	PAINT
C-FACE	BRAKE OR ENCODER	RIGID	HORIZONTAL	FALSE	NONE	FALSE	NONE	BLACK (ENAMEL)

BEARINGS		GREASE	SHAFT TYPE	SPECIAL DE	SPECIAL ODE	SHAFT MATERIAL	FRAME MATERIAL
DE	OPE						
BALL	BALL	POLYREX EM	T	NONE	NONE	1045 HOT ROLLED (C-204)	ALUMINUM
6309	6206						

THERMO-PROTECTORS				THERMISTORS	CONTROL	SPACE /n HEATERS
THERMOSTATS	PROTECTORS	WDG RTDs	BRG RTDs			
TSTATS (N/C)	NOT	NONE	NONE	NONE	FALSE	NONE VOLTS

If Inverter equals NONE, contact factory for further information

INVERTER TORQUE: CONSTANT 1000:1
INV. HP SPEED RANGE: 2.0 X BASE SPEED
ENCODER: PROVISIONS ONLY
NORTHSTAR ST56
NONE NONE PPR
BRAKE: PROVISIONS ONLY NONE
NONE P/N NONE

\*  
N  
O  
T  
E  
S  
\*

NONE	NONE
NONE FT-LB	NONE V NONE Hz

DATE: 06/21/2017 11:15:01 AM  
FORM 3531 REV.3 02/07/99  
\*\* Subject to change without notice.



Date: 6/19/2017  
 Customer:   
 Attention:   
 Submitted by: FAREEDA DUDEKULA

213THTL7736  
 Submittal  
 Data @ 575 V

		Motor Load Data							
Load	0%	25%	50%	75%	100%	115%	125%	LR	
Current (Amps)	4.4	4.8	5.8	6.8	8.4	9.1	9.8	72.0	
Torque (ft-lb)	0.00	5.5	11.0	16.8	22.3	25.7	28.0	59.5	
RPM	1800	1792	1782	1772	1765	1760	1755	0	
Efficiency (%)		81.0	87.5	89.5	90.2	90.0	89.5		
P.F. (%)		6.5	36.0	56.5	69.0	76.0	78.8	80.0	41.5

Motor Speed Data

	LR	Pull-Up	BD	Rated	Idle
Speed (rpm)	0	900	1515	1765	1800
Current (Amps)	72.0	68.0	44.0	8.4	4.4
Torque (ft-lb)	59.5	55.0	95.5	22.3	0.00

Information Block

HP	7.5			
Sync. RPM	1800			
Frame	213			
Enclosure	TENV			
Construction	TTL			
Voltage	575 V			
Frequency	60 HZ			
Design	A			
LR Code letter	L			
Service Factor	1.15			
Temp Rise @ FL	80 °C			
Duty	CONT			
Ambient	40 °C			
Elevation	1,000 feet			
Rotor/Shaft wkt	0.90 Ld-Fe			
Rel Wdg	K2134177 NONE			
Sound Pressure @ 1M	62 dBA			
VFD Rating	CONSTANT 1000:1			
Outline Dwg	B-SS330105-1025			
Conn. Diag	A-EE7300T			
Additional Specifications:				
EQUIV CKT (OHMS / PHASE)				
R1	R2	X1	X2	Xm
1.0930	0.8860	2.7580	3.5320	59.6530

