

PRODUCT INFORMATION PACKET

Model No: 284THEN8032
Catalog No: Y985
20,1800,EPNV,284TC,3/60/230/460
2000:1 Explosion Proof



Regal and Marathon are trademarks of Regal Beloit Corporation or one of its affiliated companies.
©2018 Regal Beloit Corporation, All Rights Reserved. MC017097E





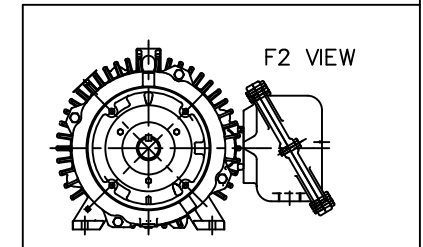
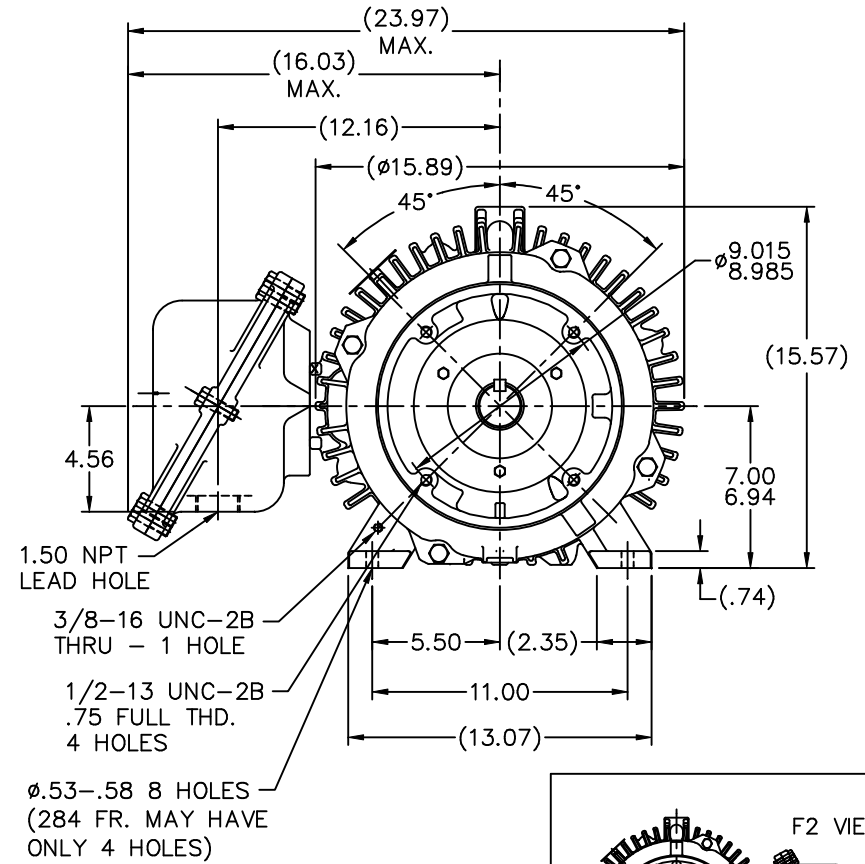
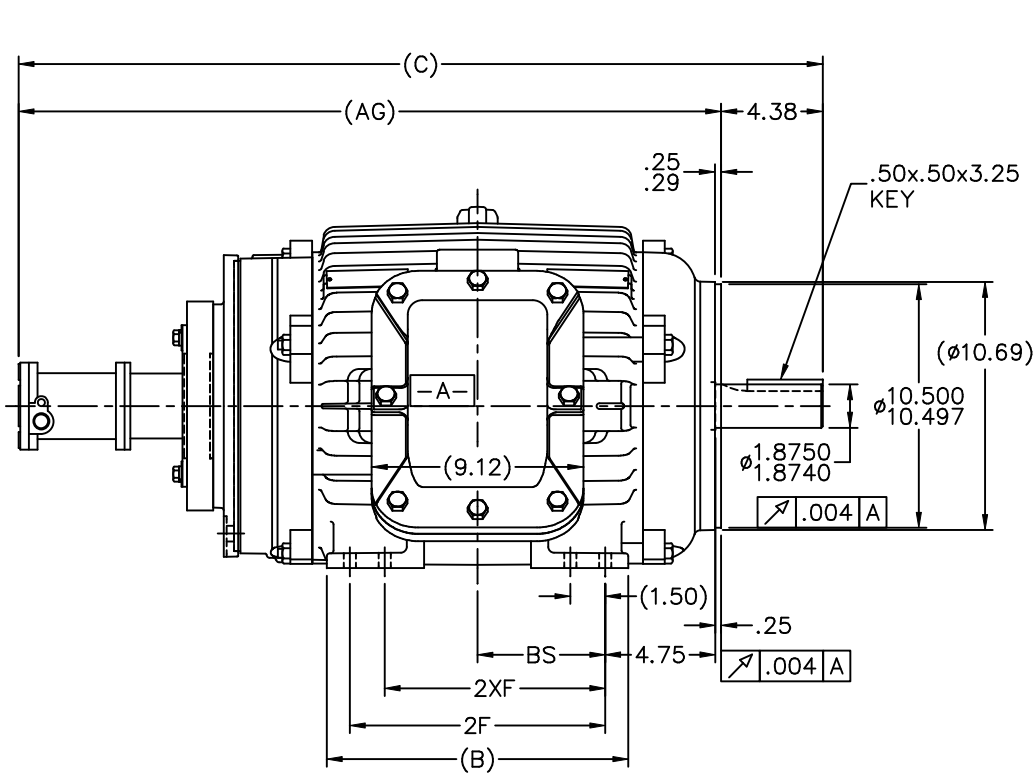
Nameplate Specifications

Output HP	20 Hp	Output KW	14.9 kW
Frequency	60 Hz	Voltage	230/460 V
Current	53/26.5 A	Speed	1775 rpm
Service Factor	1	Phase	3
Efficiency	93.6 %	Duty	CONTINUOUS
Insulation Class	F	Design Code	INV
KVA Code	M	Frame	284TC
Enclosure	EPNV	Overload Protector	NOT
Ambient Temperature	40 °C	Drive End Bearing Size	6311
Opp Drive End Bearing Size	6311	UL	No
CSA	N	CE	N
IP Code	54		

Technical Specifications

Electrical Type	SQ CAGE INV DUTY	Starting Method	INVERTER ONLY
Poles	4	Rotation	REV
Mounting	RIGID	Motor Orientation	HORIZONTAL
Drive End Bearing	BALL	Opp Drive End Bearing	BALL
Frame Material	CAST IRON	Shaft Type	T
Overall Length	33.16 in	Frame Length	12.75 in
Shaft Diameter	1.88 in	Shaft Extension	4.38 in
Assembly/Box Mounting	F1 ONLY		
Outline Drawing	B-SS311179-1275	Connection Diagram	A-EE7308T

This is an uncontrolled document once printed or downloaded and is subject to change without notice. Date Created: 04/05/2018



- NOTES:
 1. BOX CAN ONLY BE ROTATED CLOCKWISE UP TO 270° FROM ITS ORIGINAL POSITION.
 2. NAMEPLATE TO BE READ FROM CONDUIT BOX SIDE OF MOTOR.

1275	284TC	33.16	28.78	12.50	9.50	-	4.75
1425	284/86TC	34.66	30.28	13.00	11.00	9.50	5.50
DASH	FRAME	C	AG	B	2F	2XF	BS

		TOLERANCES UNLESS SPECIFIED		MARATHON ELECTRIC		DRAWN DAH 06-01-2001	
		DEC.	INCHES	CHK	ML	06-05-2001	APPD
		.X	±.1	ML	.XX	±.03	SCALE
3	ADDED F2 VIEW MU76239	RJW	11-14-2006	ML	.XX	±.03	TITLE
2	REDRAWN IN AUTOCAD	TAT	06-24-2005	DRS	.XXX	±.005	OUTLINE-EXP.PR.-TGN-BEI H38 ENCODER
1	NEW DRAWING MU36727	DAH	06-05-2001	CHK	.XXXX	±.0005	280TC FR. - BB - STD. - 12.50 LAM.
NO.	REVISION	BY & DATE	CHK	ANG	±7'30"	FINISH	REF
THIS DRAWING IN DESIGN AND DETAIL IS OUR PROPERTY AND MUST NOT BE USED EXCEPT IN CONNECTION WITH OUR WORK ALL RIGHTS OF DESIGN AND INVENTION ARE RESERVED THIS IS AN ELECTRONICALLY GENERATED DOCUMENT - DO NOT SCALE THIS PRINT						RFP	CAD FILE ss311179
						DIST	LB
						SIZE	DRAWING NO. PAGE OF
						B	SS311179 3

HIGH VOLTAGE



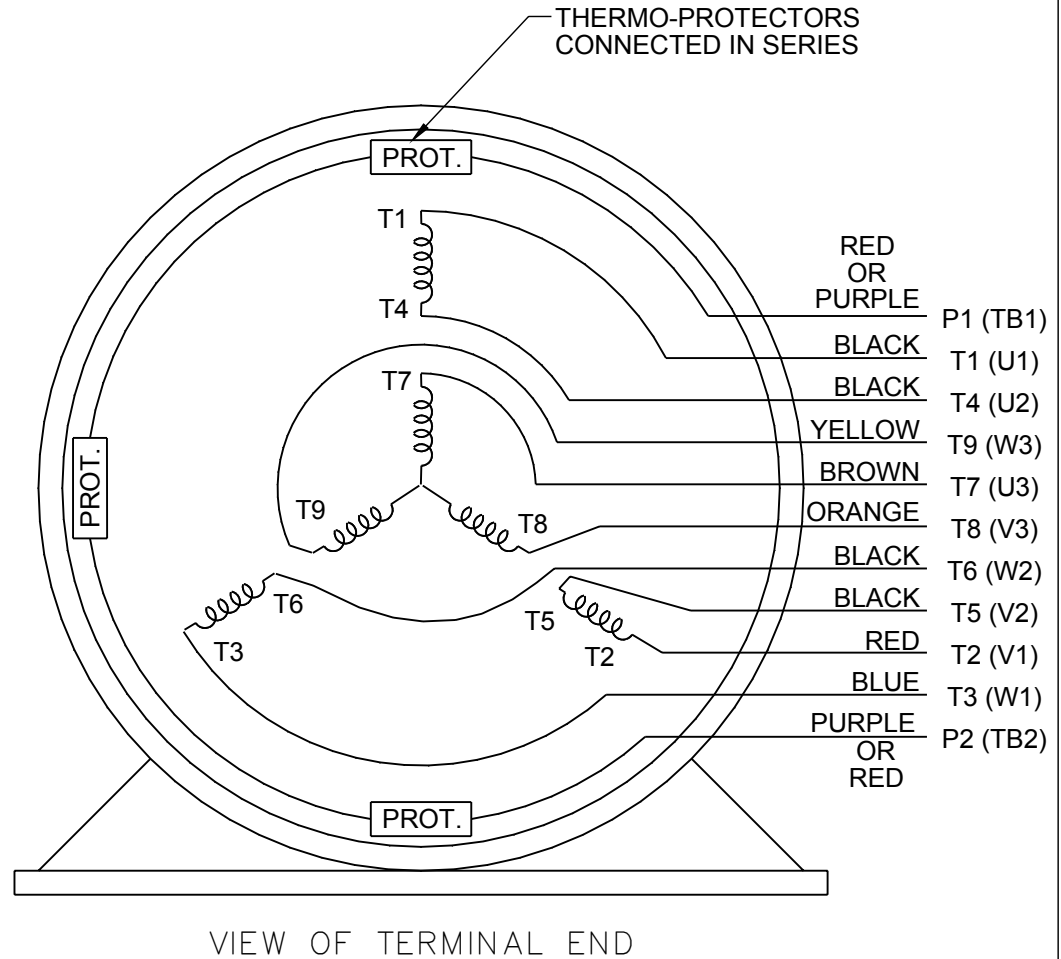
**NOTE FOR FACTORY USE ONLY:
 TO SURGE TEST FOR COMMON CONNECT:
 HIGH VOLT: CONNECT P1 TO T1
 THEN P2 TO L1
 LOW VOLT: CONNECT P1 TO T1 & T7,
 THEN P2 TO L1**

LOW VOLTAGE



NOTE: LEAD'S COLOR CAN BE YELLOW OR WHITE FOR MT2 PLANT

THREE PHASE DUAL VOLTAGE MOTOR



DRAWING REVISION R	REVISION BY AJW	DATE 07-17-2015		DRAWN BY SMC	Regal Beloit America, Inc.
ECO ECO-0081632	APPROVED BY T. VUE	DATE 07-17-2015		DATE 05-13-1992	
ECO DESCRIPTION REV'D IEC NOTATIONS PER IEC 60034-8				APPROVED BY TB	DESCRIPTION CONN DIAGRAM-INTERNAL
<small>COPYRIGHT REGAL BELOIT AMERICA, INC. ALL RIGHTS RESERVED. PROPRIETARY AND CONFIDENTIAL INFORMATION - THIS DOCUMENT IS THE PROPERTY OF REGAL BELOIT AMERICA, INC. ("OWNER") AND CONTAINS OWNER'S PROPRIETARY INFORMATION. ANY PERSON, CORPORATION OR OTHER FIRM RECEIVING IT IS DEEMED, BY RECEIVING IT, TO AGREE THAT IT, AND/OR ANY PART OF IT, SHALL NOT BE DISCLOSED TO ANY PERSON, CORPORATION OR OTHER ENTITY, DUPLICATED, AND/OR USED, EXCEPT AS EXPRESSLY APPROVED IN WRITING IN ADVANCE BY OWNER. THIS DOCUMENT SHALL BE RETURNED TO OWNER UPON REQUEST. IT MAY BE SUBJECT TO CERTAIN RESTRICTIONS UNDER APPLICABLE EXPORT CONTROL LAWS AND REGULATIONS.</small>				DATE 05-13-1992	3 PHASE - DUAL VOLTAGE MOTOR
			REFERENCE EE7308/EE7300	MATERIAL	PROCESS/FINISH
			THIRD ANGLE PROJECTION	SIZE A	DRAWING NUMBER EE7308T

NONE	P/N	NONE	
NONE	NONE		
NONE FT-LB	NONE V	NONE Hz	

DATE: 06/21/2017 10:10:33 AM
FORM 3531 REV.3 02/07/99
** Subject to change without notice.

Data Sheet

Date: 29-06-2017
 Customer: _____
 Attention: _____
 Submitted by: FAREEDA DUDEKULA



284THEN8032

Submittal

Data @ 460 V

Motor Load Data

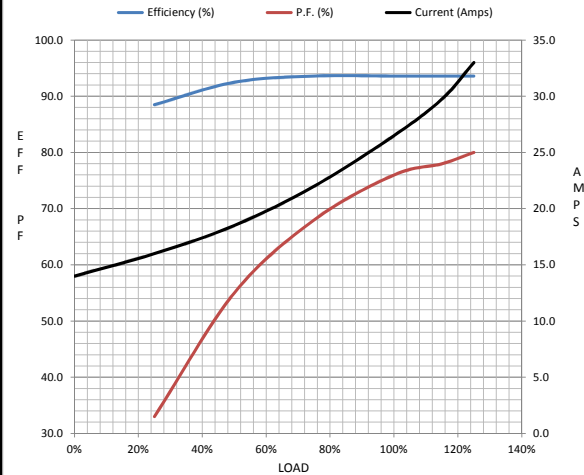
Load	0%	25%	50%	75%	100%	115%	125%	LR
Current (Amps)	14.0	16.0	18.5	22.0	26.5	29.8	33.0	280
Torque (ft-lb)	0.00	14.8	29.5	44.2	59.2	66.7	74.2	135
RPM	1800	1795	1788	1782	1775	1,773	1770	0
Efficiency (%)		88.5	92.5	93.6	93.6	93.6	93.6	
P.F. (%)	3.0	33.0	55.0	68.0	76.0	78.0	80.0	26.0

Motor Speed Data

	LR	Pull-Up	BD	Rated	Idle
Speed (RPM)	0	900	1485	1775	1800
Current (Amps)	280	250	175	26.5	14.0
Torque (ft-lb)	135	125	275	59.2	0.00

Information Block

HP	20.0			
Sync. RPM	1800			
Frame	284			
Enclosure	TENV			
Construction	TTN			
Voltage	230/460 V			
Frequency	60 Hz			
Design	A			
LR Code letter	M			
Service Factor	1.15			
Temp Rise @ FL	80 ° C			
Duty	CONT			
Ambient	40 ° C			
Elevation	1,000 feet			
Rotor/Shaft wk²	4.4 Lb-Ft²			
Ref Wdg	K2844139 R1			
Sound Pressure @ 1M	62 dBA			
VFD Rating	CONSTANT 2000:1			
Outline Dwg	B-SS311179-1275			
Conn. Diag	A-EE7308T			
Additional Specifications:				
0				
365THFS8036				
EQUIV CKT (OHMS / PHASE)				
R1	R2	X1	X2	Xm
0.1560	0.1560	0.7240	0.7340	13.7740



Speed -Torque Curve

