

# PRODUCT INFORMATION PACKET

Model No: 326THFPA8086  
Catalog No: Y584  
30,1200,TEBC,326TC,3/60/230/460  
2000:1 With Encoder Provision



Regal and Marathon are trademarks of Regal Beloit Corporation or one of its affiliated companies.  
©2018 Regal Beloit Corporation, All Rights Reserved. MC017097E





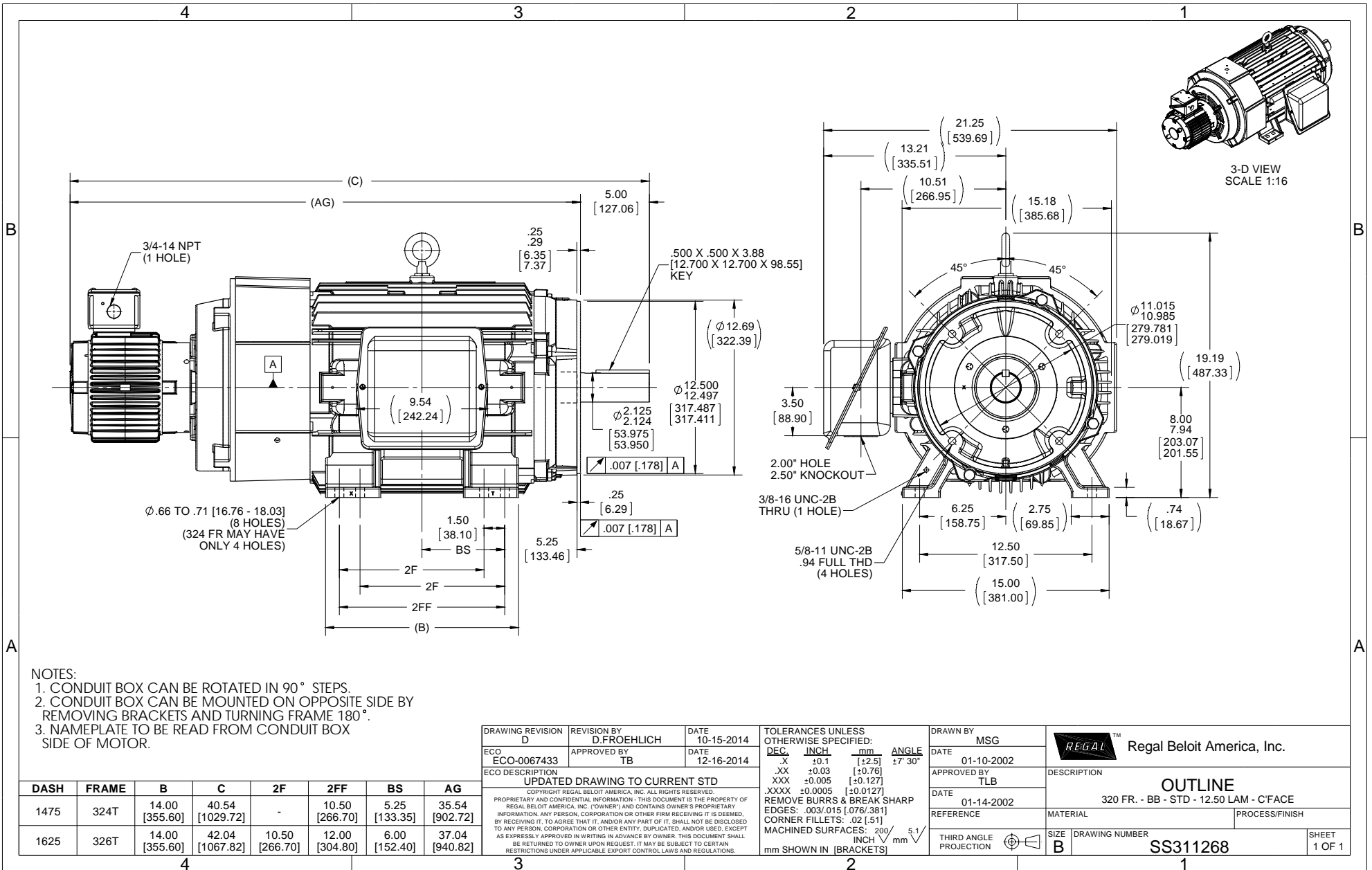
### Nameplate Specifications

Output HP	<b>30 Hp</b>	Output KW	<b>22.4 kW</b>
Frequency	<b>60 Hz</b>	Voltage	<b>230/460 V</b>
Current	<b>80.5/40 A</b>	Speed	<b>1170 rpm</b>
Service Factor	<b>1</b>	Phase	<b>3</b>
Efficiency	<b>89.5 %</b>	Duty	<b>CONTINUOUS</b>
Insulation Class	<b>H</b>	Design Code	<b>INV</b>
KVA Code	<b>G</b>	Frame	<b>326TC</b>
Enclosure	<b>TEBC-AXIAL</b>	Overload Protector	<b>NOT</b>
Ambient Temperature	<b>40 °C</b>	Drive End Bearing Size	<b>6312</b>
Opp Drive End Bearing Size	<b>6311</b>	UL	<b>Recognized</b>
CSA	<b>Y</b>	CE	<b>Y</b>
IP Code	<b>43</b>		

### Technical Specifications

Electrical Type	<b>SQ CAGE INV DUTY</b>	Starting Method	<b>INVERTER ONLY</b>
Poles	<b>6</b>	Rotation	<b>REV</b>
Mounting	<b>RIGID</b>	Motor Orientation	<b>HORIZONTAL</b>
Drive End Bearing	<b>BALL</b>	Opp Drive End Bearing	<b>BALL</b>
Frame Material	<b>CAST IRON</b>	Shaft Type	<b>T</b>
Overall Length	<b>42.04 in</b>	Frame Length	<b>16.25 in</b>
Shaft Diameter	<b>2.13 in</b>	Shaft Extension	<b>5 in</b>
Assembly/Box Mounting	<b>F1/F2 CAPABLE</b>		
Outline Drawing	<b>B-SS311268-1625</b>	Connection Diagram	<b>A-EE7308T</b>

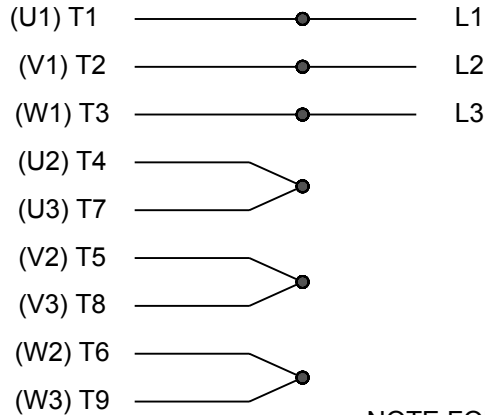
This is an uncontrolled document once printed or downloaded and is subject to change without notice. Date Created: 04/05/2018



- NOTES:  
 1. CONDUIT BOX CAN BE ROTATED IN 90° STEPS.  
 2. CONDUIT BOX CAN BE MOUNTED ON OPPOSITE SIDE BY REMOVING BRACKETS AND TURNING FRAME 180°.  
 3. NAMEPLATE TO BE READ FROM CONDUIT BOX SIDE OF MOTOR.

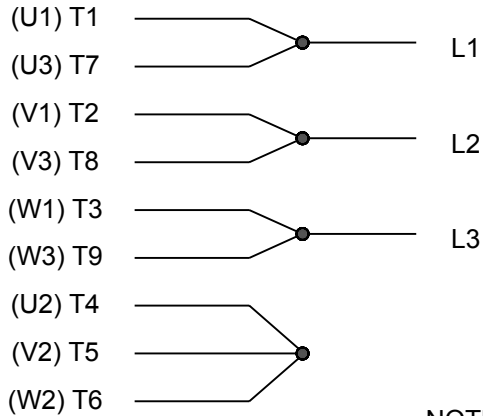
DRAWING REVISION <b>D</b>	REVISION BY <b>D.FROEHLICH</b>	DATE <b>10-15-2014</b>	TOLERANCES UNLESS OTHERWISE SPECIFIED: <b>DEC. INCH mm ANGLE</b>	DRAWN BY <b>MSG</b>	Regal Beloit America, Inc.						
ECO <b>ECO-0067433</b>	APPROVED BY <b>TB</b>	DATE <b>12-16-2014</b>	.X ±0.1 [±2.5] ±7° 30' .XX ±0.03 [±0.76] .XXX ±0.005 [±0.127] XXXX ±0.0005 [±0.0127]	DATE <b>01-10-2002</b>							
ECO DESCRIPTION <b>UPDATED DRAWING TO CURRENT STD</b>			REMOVE BURRS & BREAK SHARP EDGES: .003/.015 [076/381] CORNER FILLETS: .02 [51] MACHINED SURFACES: 200/ 5.1 mm SHOWN IN [BRACKETS] INCH/mm	APPROVED BY <b>TLB</b>	DESCRIPTION <b>OUTLINE</b> 320 FR. - BB - STD - 12.50 LAM - C'FACE						
COPYRIGHT REGAL BELOIT AMERICA, INC. ALL RIGHTS RESERVED. PROPRIETARY AND CONFIDENTIAL INFORMATION - THIS DOCUMENT IS THE PROPERTY OF REGAL BELOIT AMERICA, INC. ("OWNER") AND CONTAINS OWNER'S PROPRIETARY INFORMATION. ANY PERSON, CORPORATION OR OTHER FIRM RECEIVING IT IS DEEMED, BY RECEIVING IT, TO AGREE THAT IT, AND/OR ANY PART OF IT, SHALL NOT BE DISCLOSED TO ANY PERSON, CORPORATION OR OTHER ENTITY, DUPLICATED, AND/OR USED, EXCEPT AS EXPRESSLY APPROVED IN WRITING IN ADVANCE BY OWNER. THIS DOCUMENT SHALL BE RETURNED TO OWNER UPON REQUEST. IT MAY BE SUBJECT TO CERTAIN RESTRICTIONS UNDER APPLICABLE EXPORT CONTROL LAWS AND REGULATIONS.			DATE <b>01-14-2002</b>	MATERIAL	PROCESS/FINISH						
<b>DASH</b>	<b>FRAME</b>	<b>B</b>	<b>C</b>	<b>2F</b>	<b>2FF</b>	<b>BS</b>	<b>AG</b>	REFERENCE	SIZE <b>B</b>	DRAWING NUMBER <b>SS311268</b>	SHEET <b>1 OF 1</b>
1475	324T	14.00 [355.60]	40.54 [1029.72]	-	10.50 [266.70]	5.25 [133.35]	35.54 [902.72]				
1625	326T	14.00 [355.60]	42.04 [1067.82]	10.50 [266.70]	12.00 [304.80]	6.00 [152.40]	37.04 [940.82]				

HIGH VOLTAGE



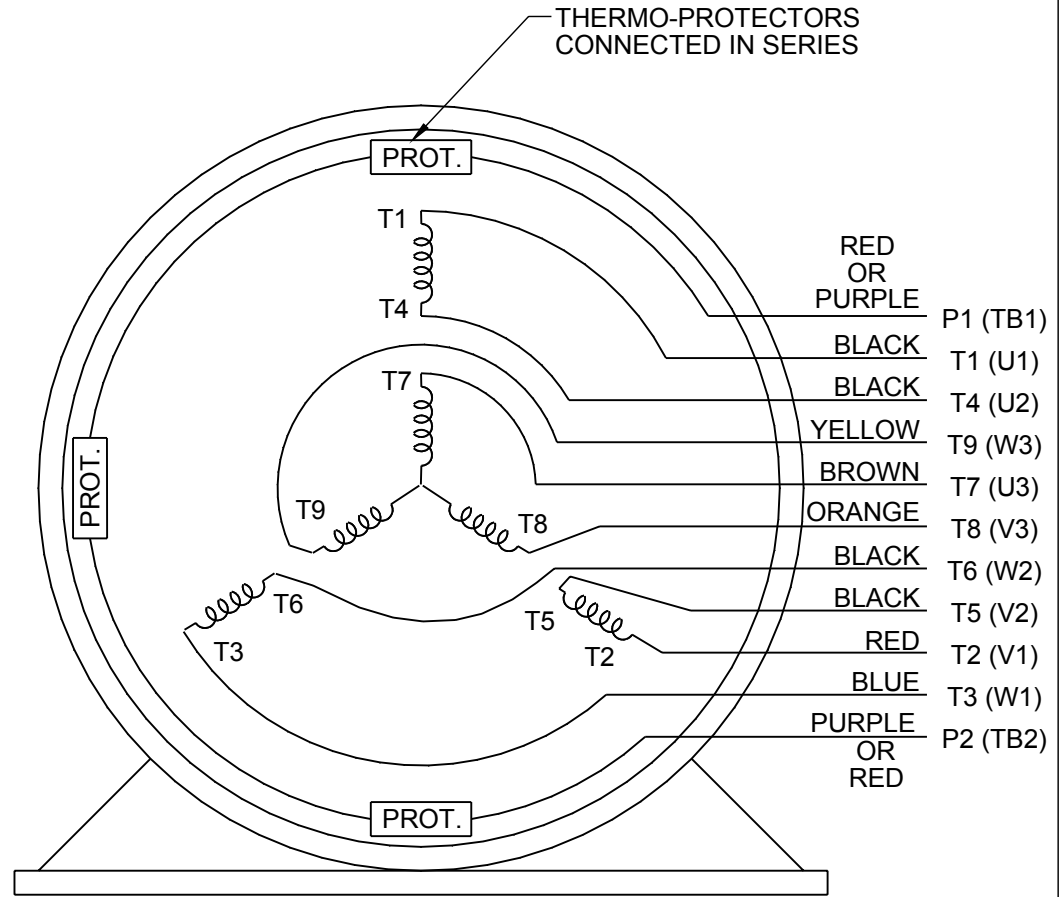
NOTE FOR FACTORY USE ONLY:  
 TO SURGE TEST FOR COMMON CONNECT:  
 HIGH VOLT: CONNECT P1 TO T1  
 THEN P2 TO L1  
 LOW VOLT: CONNECT P1 TO T1 & T7,  
 THEN P2 TO L1

LOW VOLTAGE



NOTE: LEAD'S COLOR CAN BE YELLOW OR WHITE FOR MT2 PLANT

THREE PHASE  
 DUAL VOLTAGE MOTOR



VIEW OF TERMINAL END

DRAWING REVISION R	REVISION BY AJW	DATE 07-17-2015		DRAWN BY SMC	Regal Beloit America, Inc.	
ECO ECO-0081632	APPROVED BY T. VUE	DATE 07-17-2015		DATE 05-13-1992		
ECO DESCRIPTION REV'D IEC NOTATIONS PER IEC 60034-8				APPROVED BY TB	DESCRIPTION <b>CONN DIAGRAM-INTERNAL</b> 3 PHASE - DUAL VOLTAGE MOTOR	
<small>COPYRIGHT REGAL BELOIT AMERICA, INC. ALL RIGHTS RESERVED.                  PROPRIETARY AND CONFIDENTIAL INFORMATION - THIS DOCUMENT IS THE PROPERTY OF                  REGAL BELOIT AMERICA, INC. ("OWNER") AND CONTAINS OWNER'S PROPRIETARY                  INFORMATION. ANY PERSON, CORPORATION OR OTHER FIRM RECEIVING IT IS DEEMED,                  BY RECEIVING IT, TO AGREE THAT IT, AND/OR ANY PART OF IT, SHALL NOT BE DISCLOSED                  TO ANY PERSON, CORPORATION OR OTHER ENTITY, DUPLICATED, AND/OR USED, EXCEPT                  AS EXPRESSLY APPROVED IN WRITING IN ADVANCE BY OWNER. THIS DOCUMENT SHALL                  BE RETURNED TO OWNER UPON REQUEST. IT MAY BE SUBJECT TO CERTAIN                  RESTRICTIONS UNDER APPLICABLE EXPORT CONTROL LAWS AND REGULATIONS.</small>				DATE 05-13-1992	MATERIAL	PROCESS/FINISH
			REFERENCE EE7308/EE7300	SIZE A	DRAWING NUMBER EE7308T	SHEET 1 OF 1
			THIRD ANGLE PROJECTION			

**CERTIFICATION DATA SHEET**

**Model#:** 326THFPA8086 BB      **WINDING#:** 286655 R6 6  
**CONN. DIAGRAM:** A-EE7308T      **ASSEMBLY:** F1/F2 CAPABLE  
**OUTLINE:** B-SS311268-1625

**TYPICAL MOTOR PERFORMANCE DATA**

HP	KW	SYNC. RPM	F.L. RPM	FRAME	ENCLOSURE	KVA CODE	DESIGN
30	22.4	1200	1170	326TC	TEBC-AXIAL	G	INV

PH	Hz	VOLTS	FL AMPS	START TYPE	DUTY	INSL	S.F	AMB°C	ELEVATION
3	60	230/460	80.5/40	INVERTER ONLY	CONTINUOUS	H4	1.0	40	3300

FULL LOAD EFF: 89.5	3/4 LOAD EFF: 90.2	1/2 LOAD EFF: 90.2	GTD. EFF	ELEC. TYPE	NO LOAD AMPS
FULL LOAD PF: 78	3/4 LOAD PF: 73	1/2 LOAD PF: 63	87.5	SQ CAGE INV DUTY	37 / 18.5

F.L. TORQUE	LOCKED ROTOR AMPS	L.R. TORQUE	B.D. TORQUE	F.L. RISE°C
135 LB-FT	420 / 210	215 LB-FT 159	320 LB-FT 237	75

SOUND PRESSURE @ 3 FT.	SOUND POWER	ROTOR WK^2	MAX. WK^2	SAFE STALL TIME	STARTS /HOUR	APPROX. MOTOR WGT
75 dBA	85 dBA	5 LB-FT^2	- LB-FT^2	- SEC.	-	625 LBS.

**EQUIVALENT WYE CKT.PARAMETERS (OHMS PER PHASE)**

R1	R2	X1	X2	XM
0.20339	0.20812	1.01222	0.942216	14.7576

RM	ZREF	XR	TD	TD0
779.504	9.46	5.2	0.0185	0.2

**\*\*\* SUPPLEMENTAL INFORMATION \*\*\***

DE BRACKET TYPE	ODE BRACKET TYPE	MOUNT TYPE	ORIENTATION	SEVERE DUTY	HAZARDOUS LOCATION	DRIP COVER	SCREENS	PAINT
C-FACE	ENCODER	RIGID	HORIZONTAL	FALSE	NONE	FALSE	NONE	BLUE (ENAMEL)

BEARINGS		GREASE	SHAFT TYPE	SPECIAL DE	SPECIAL ODE	SHAFT MATERIAL	FRAME MATERIAL
DE	OPE	POLYREX EM	T	NONE	NONE	1045 HOT ROLLED (C-204)	CAST IRON
BALL	BALL						
6312	6311						

THERMO-PROTECTORS				THERMISTORS	CONTROL	SPACE /n HEATERS
THERMOSTATS	PROTECTORS	WDG RTDs	BRG RTDs			
TSTATS (N/C)	NOT	NONE	NONE	NONE	FALSE	NONE VOLTS

If Inverter equals NONE, contact factory for further information

INVERTER TORQUE: CONSTANT 2000:1
INV. HP SPEED RANGE: 1.5 X BASE SPEED
ENCODER: PROVISIONS ONLY
NONE NONE
NONE NONE PPR
BRAKE: NONE NONE
NONE P/N NONE

\*  
N  
O  
T  
E  
S  
\*

NONE	NONE	
- FT-LB	NONE V	NONE Hz

DATE: 06/21/2017 05:51:21 AM  
FORM 3531 REV.3 02/07/99  
\*\* Subject to change without notice.

Data Sheet

Date: 20-06-2017  
 Customer: \_\_\_\_\_  
 Attention: \_\_\_\_\_  
 Submitted by: FAREEDA DUDEKULA



326THFA8086

Submittal

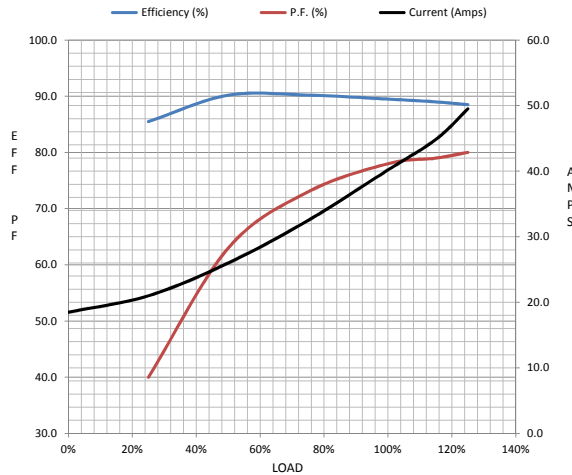
Data @ 460 V

Motor Load Data

Load	0%	25%	50%	75%	100%	115%	125%	LR
Current (Amps)	18.5	21.0	26.0	32.5	40.2	44.9	49.5	210
Torque (ft-lb)	0.00	33.0	66.0	100	135	153	170	215
RPM	1200	1192	1186	1178	1170	1,166	1160	0
Efficiency (%)		85.5	90.2	90.2	89.5	89.0	88.5	
P.F. (%)	6.0	40.0	63.0	73.0	78.0	79.0	80.0	37.0

Motor Speed Data

	LR	Pull-Up	BD	Rated	Idle	Information Block	
Speed (RPM)	0	600	1070	1170	1200	HP	30.0
Current (Amps)	210	190	130	40.2	18.5	Sync. RPM	1200
Torque (ft-lb)	215	195	320	135	0.00	Frame	326



Enclosure	TEBC			
Construction	TBP			
Voltage	230/460 V			
Frequency	60 Hz			
Design	B			
LR Code letter	G			
Service Factor	1.15			
Temp Rise @ FL	75 ° C			
Duty	CONT			
Ambient	40 ° C			
Elevation	1,000 feet			
Rotor/Shaft wk²	5.0 Lb-Ft²			
Ref Wdg	286655 R6			
Sound Pressure @ 1M	75 dBA			
VFD Rating	CONSTANT 2000:1			
Outline Dwg	B-SS311268-1625			
Conn. Diag	A-EE7308T			
Additional Specifications:				
0				
365THFS8036				
EQUIV CKT (OHMS / PHASE)				
R1	R2	X1	X2	Xm
0.2030	0.2080	1.0120	0.9420	14.7580

Speed -Torque Curve

