

# PRODUCT INFORMATION PACKET

Model No: 5KCR49PN0100  
Catalog No: E274  
3/4, 1725/1425, TEFC, 56C, 1/60/100-120/200-240  
Totally Enclosed Fan Cooled (TEFC)



Regal and Marathon are trademarks of Regal Beloit Corporation or one of its affiliated companies.  
©2018 Regal Beloit Corporation, All Rights Reserved. MC017097E



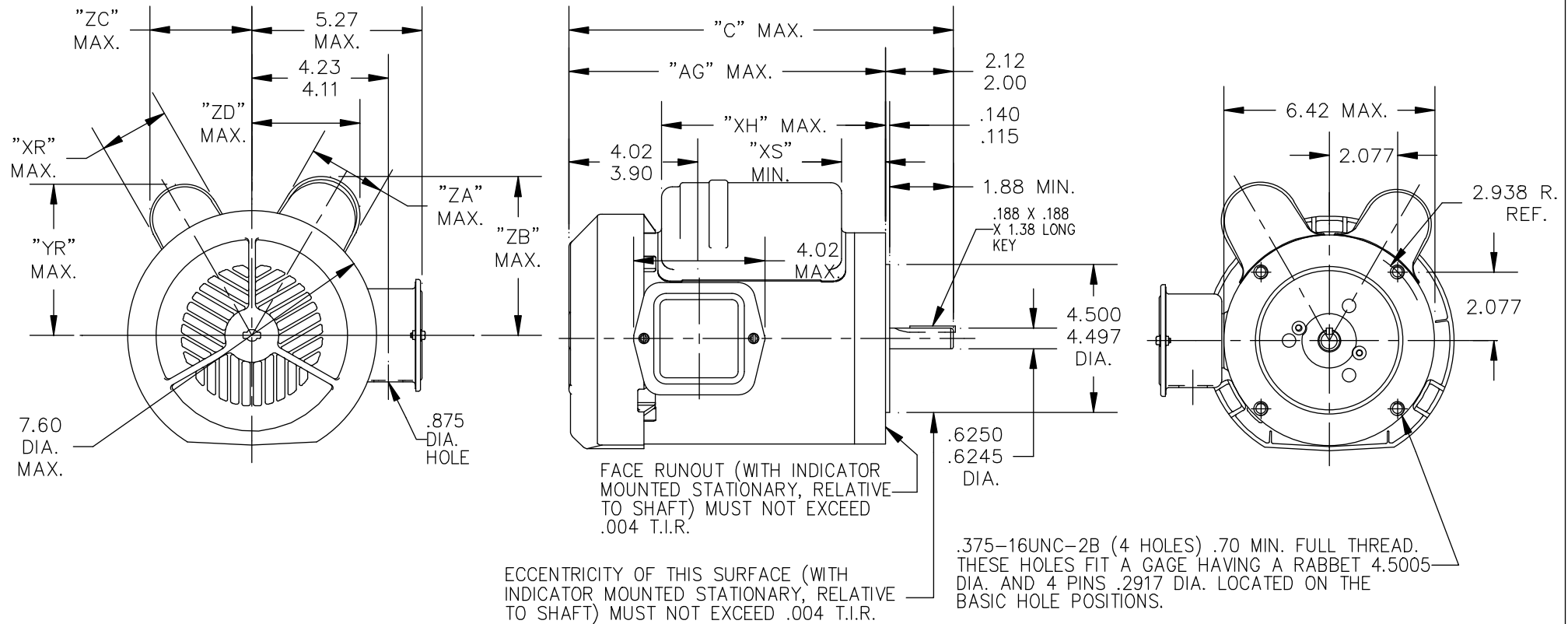
### Nameplate Specifications

|                        |                          |                            |                          |
|------------------------|--------------------------|----------------------------|--------------------------|
| Output HP              | <b>0.75 Hp</b>           | Output KW                  | <b>0.56 kW</b>           |
| Frequency              | <b>60 Hz</b>             | Voltage                    | <b>100-120/200-240 V</b> |
| Current                | <b>9.0-8.8,4.5-4.4 A</b> | Speed                      | <b>1725 rpm</b>          |
| Service Factor         | <b>1.25</b>              | Phase                      | <b>1</b>                 |
| Efficiency             | <b>75.2 %</b>            | Duty                       | <b>CONT</b>              |
| Insulation Class       | <b>B</b>                 | KVA Code                   | <b>M</b>                 |
| Frame                  | <b>56C</b>               | Enclosure                  | <b>TEFC</b>              |
| Overload Protector     | <b>N/R</b>               | Ambient Temperature        | <b>40 °C</b>             |
| Drive End Bearing Size | <b>6203</b>              | Opp Drive End Bearing Size | <b>6203</b>              |
| UL                     | <b>Recognized</b>        | CSA                        | <b>Yes</b>               |
| CE                     | <b>N</b>                 |                            |                          |

### Technical Specifications

|                   |  |                       |                    |
|-------------------|--|-----------------------|--------------------|
| Electrical Type   | <b>Capacitor Start Capacitor Run(CSCR)</b> | Starting Method       | <b>SM</b>          |
| Poles             | <b>4</b>                                   | Rotation              | <b>CCW/CW</b>      |
| Mounting          | <b>RD</b>                                  | Motor Orientation     | <b>ANY</b>         |
| Drive End Bearing | <b>BALL</b>                                | Opp Drive End Bearing | <b>BALL</b>        |
| Frame Material    | <b>Rolled Steel</b>                        | Overall Length        | <b>12.44 in</b>    |
| Frame Length      | <b>7.15 in</b>                             | Shaft Diameter        | <b>0.63 in</b>     |
| Shaft Extension   | <b>1.88 in</b>                             |                       |                    |
| Outline Drawing   | <b>52A107781P2</b>                         | Connection Diagram    | <b>52A105381BC</b> |

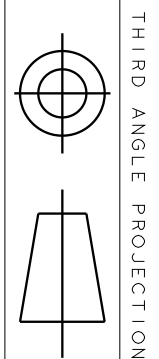
This is an uncontrolled document once printed or downloaded and is subject to change without notice. Date Created: 04/05/2018



ALL DIMENSIONS ARE IN INCHES

|  | 6   | 5   | 4   | 3   | 2   | 1   | P    |          |          |       |       |      |      |      |      |      |      |      |      |            |
|--|-----|-----|-----|-----|-----|-----|------|----------|----------|-------|-------|------|------|------|------|------|------|------|------|------------|
|  | KCR | KCR | KCR | KCR | KCR | KCR | TYPE | RBC SIZE | NEMA FR. | "C"   | "AG"  | "XH" | "YR" | "XR" | "XS" | "ZA" | "ZB" | "ZC" | "ZD" | MIN. SHELL |
|  | 48  | 48  | 49  | 49  | 49  | 46  |      |          |          | 13.69 | 11.57 | 7.56 | 4.68 | 2.15 | 1.89 | 2.15 | 4.68 | 3.20 | 3.20 | 8.43       |
|  | 56C | 56C | 56C | 56C | 56C | 56C |      |          |          | 13.69 | 11.57 | 7.56 | 4.66 | 2.10 | 1.89 | 2.72 | 5.28 | 3.14 | 3.63 | 8.43       |
|  |     |     |     |     |     |     |      |          |          | 14.28 | 12.16 | 7.51 | 4.90 | 2.40 | 1.84 | 2.72 | 5.27 | 3.38 | 3.66 | 8.99       |
|  |     |     |     |     |     |     |      |          |          | 12.97 | 10.85 | 7.61 | 4.68 | 2.15 | 1.86 | 2.72 | 5.27 | 3.20 | 3.66 | 7.68       |
|  |     |     |     |     |     |     |      |          |          | 12.44 | 10.32 | 7.54 | 4.68 | 2.15 | 1.79 | 2.40 | 4.90 | 3.20 | 3.38 | 7.15       |
|  |     |     |     |     |     |     |      |          |          | 11.84 | 9.72  | 6.94 | 4.68 | 2.15 | 1.19 | 2.40 | 4.90 | 3.20 | 3.38 | 6.55       |
|  |     |     |     |     |     |     |      |          |          |       |       |      |      |      |      |      |      |      |      |            |

|  |                                   |           |          |     |       |         |        |                    |  |                             |  |        |      |   |  |  |  |                     |      |     |      |  |
|--|-----------------------------------|-----------|----------|-----|-------|---------|--------|--------------------|--|-----------------------------|--|--------|------|---|--|--|--|---------------------|------|-----|------|--|
|  |                                   |           |          |     |       |         |        |                    |  | TOLERANCES UNLESS SPECIFIED |  |        |      | DRAWN M.D.P 03/02/92                    |  |  |  |                     |      |     |      |  |
|  |                                   |           |          |     |       |         |        |                    |  | DEC.                        |  | INCHES |      | REGAL-BELOIT CORPORATION                |  |  |  | CHK                 |      |     |      |  |
|  |                                   |           |          |     |       |         |        |                    |  | .X                          |  | ±0.1   |      | TITLE<br>OUTLINE<br>TEFC-R2 END MAINTED |  |  |  | APPD M.D.P 10/22/99 |      |     |      |  |
|  |                                   |           |          |     |       |         |        |                    |  | .XX                         |  | ±0.02  |      |   |  |  |  | SCALE 1=1           |      |     |      |  |
| 8  | REDRAWN IN DRAFT SIGHT NO CHANGES | UD        | 10/18/12 | PKG | .XXX  | ±0.005  |        |                    |  |                             |  |        |      |   |  |  |  |                     |      | REF |      |  |
| 7  | CHG TO RBC FORMAT PER ISO5-1777   | SD        | 03/03/06 |     | .XXXX | ±0.0005 | MAT'L. |                    |  |                             |  |        |      |   |  |  |  |                     |      |     | FMF  |  |
| NO.  | REVISION                          | BY & DATE | CHK      | ANG | ±1.0  |         | FINISH |                    |  |                             |  |        |      |   |  |  |  |                     |      |     | PREV |  |
| THIS DRAWING IN DESIGN AND DETAIL IS OUR PROPERTY AND MUST NOT BE USED EXCEPT IN CONNECTION WITH OUR WORK ALL RIGHTS OF DESIGN AND INVENTION ARE RESERVED THIS IS AN ELECTRONICALLY GENERATED DOCUMENT - DO NOT SCALE THIS PRINT |                                   |           |          |     |       |         | RFP    | CAD FILE 52A107781 |  |                             |  |        | SIZE | DRAWING NO. 52A107781                   |  |  |  |                     | REV. | 8   |      |  |
|  |                                   |           |          |     |       |         | DIST   |                    |  |                             |  |        | A    |   |  |  |  |                     |      |     |      |  |



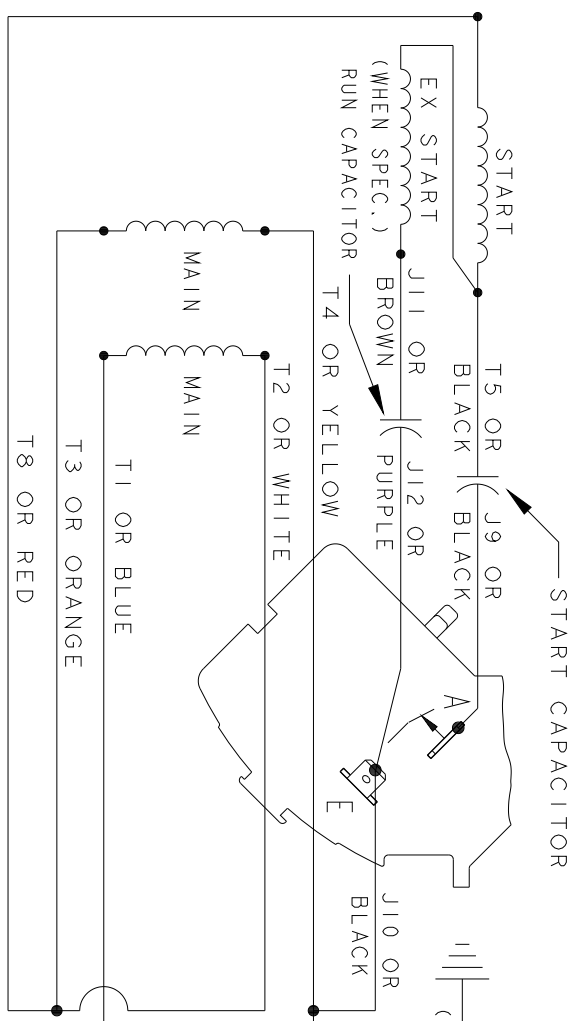
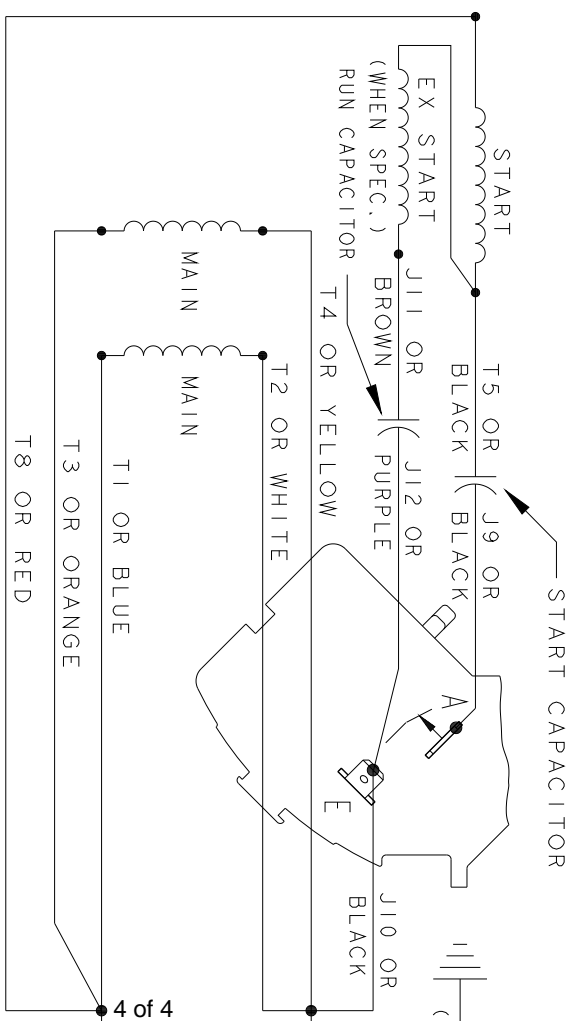
THIRD ANGLE PROJECTION

REVISIONS

| REV. | DESCRIPTION    |
|------|----------------|
| 3    | UPDATED FORMAT |

CCW/CW ROTATION - DUAL VOL  
TYPE KCR

|      |                    |
|------|--------------------|
| SIZE | DRAWING NO.        |
|      | <b>52A105381BC</b> |
|      | REV <b>3</b>       |
|      | SHEET <b>1</b>     |



NOTE#1 - TO REVERSE ROTATION, INTERCHANGE T8 RED AN  
NOTE#2 - WHEN MORE THAN ONE CAPACITOR IS USED, CONN

SWITCH (H) - 11

REF. DIAG. - 119A93Z4

CONNECTION LABEL

|                               |            |          |  |
|-------------------------------|------------|----------|--|
| SIGNATURES                    |            | DATE     |  |
| MODEL                         | M.D. PAPER | 05/09/90 |  |
| DETAIL                        |            |          |  |
| CHECKED                       |            |          |  |
| ENGRG                         |            |          |  |
| FOR ADDITIONAL INFO REFER TO: |            |          |  |
| APPLIED PRACTICES             |            |          |  |
| DIMENSIONS ARE IN INCHES      |            |          |  |
| MATERIAL                      |            |          |  |

|                   |  |              |  |
|-------------------|--|--------------|--|
| TITLE             |  | SCALE: 1.000 |  |
| <b>CONNECTION</b> |  | REF. No:     |  |
| SIZE DRAWING      |  |              |  |
| A                 |  |              |  |
| FMM: SK           |  |              |  |



REGAL BELT