

PRODUCT INFORMATION PACKET

marathon®
Motors

Model No: 5KC36LN4003Y
Catalog No: C664
1/2,3450,TEFC,56,1/60/115/230
Totally Enclosed Fan Cooled (TEFC)



Regal and Marathon are trademarks of Regal Beloit Corporation or one of its affiliated companies.

©2018 Regal Beloit Corporation, All Rights Reserved. MC017097E

REGAL



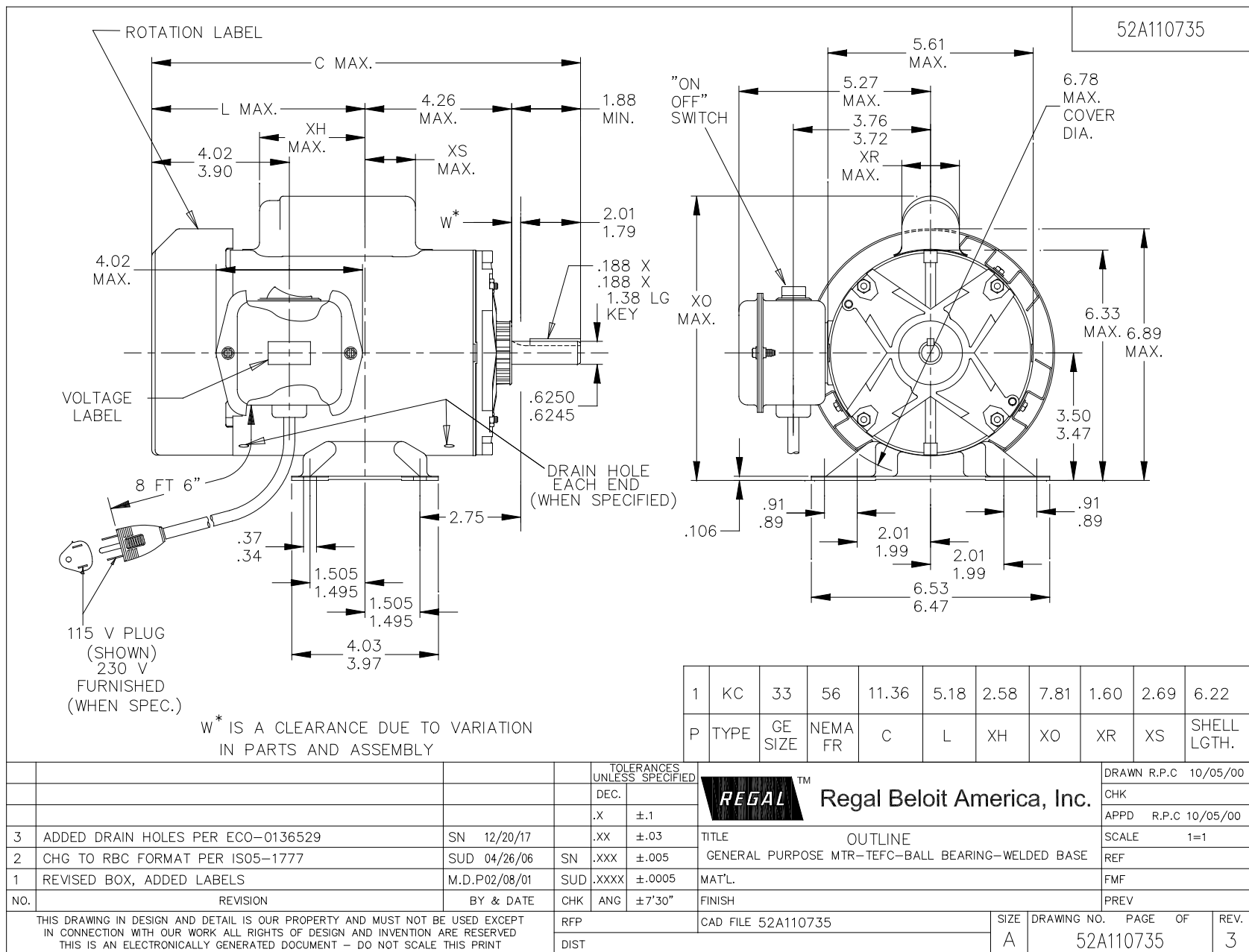
Nameplate Specifications

Output HP	0.5 Hp	Output KW	0.37 kW
Frequency	60 Hz	Voltage	115/230 V
Current	8.0,4.0 A	Speed	3450 rpm
Service Factor	1	Phase	1
Efficiency	68.8 %	Duty	CONT
Insulation Class	B	KVA Code	L
Frame	56	Enclosure	TEFC
Overload Protector	MAN	Ambient Temperature	40 °C
Drive End Bearing Size	6203	Opp Drive End Bearing Size	6203
UL	Recognized	CSA	Yes
CE	N		

Technical Specifications

Electrical Type	Capacitor start(CSIR)	Starting Method	SM
Poles	2	Rotation	CCW/CW
Mounting	WB	Motor Orientation	ANY
Drive End Bearing	BALL	Opp Drive End Bearing	BALL
Frame Material	Rolled Steel	Overall Length	11.36 in
Frame Length	6.22 in	Shaft Diameter	0.63 in
Shaft Extension	1.88 in		
Outline Drawing	52A110735P1	Connection Diagram	52A105383BB

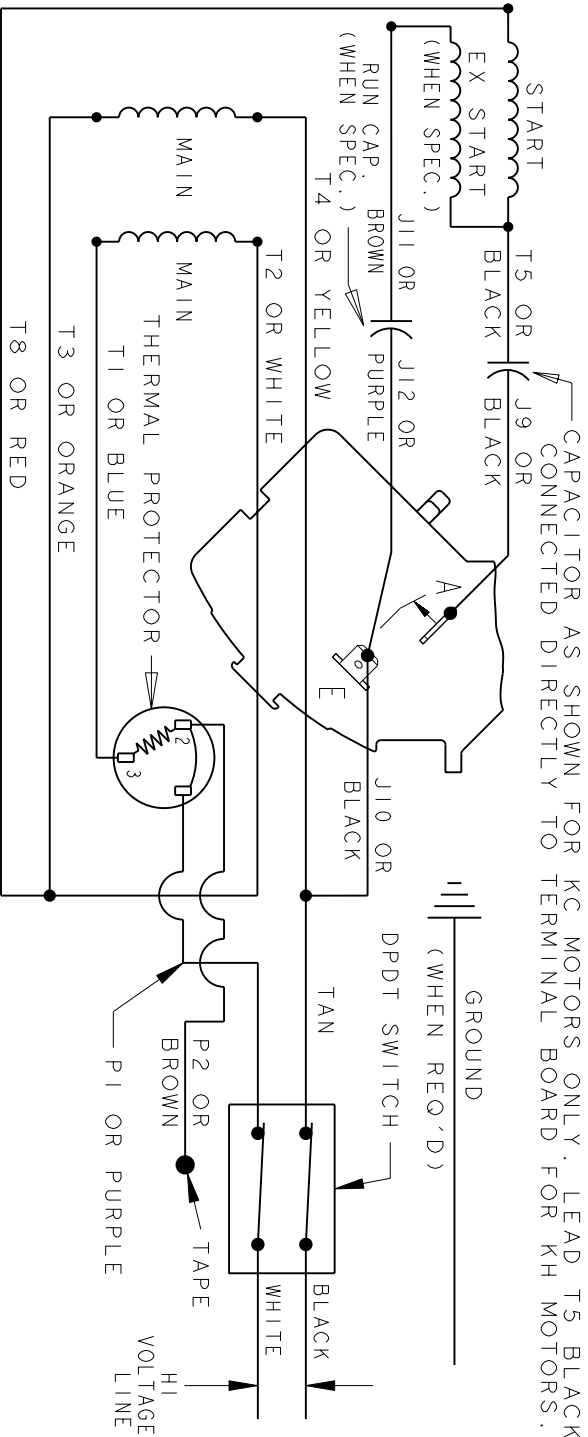
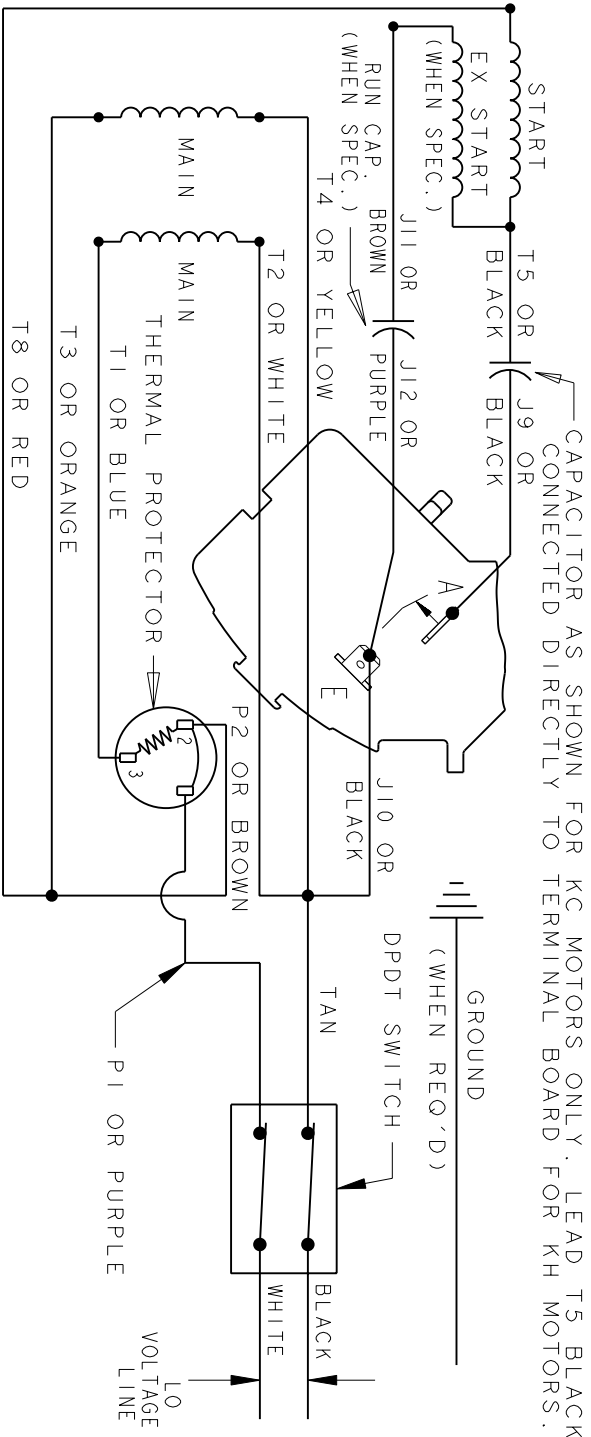
This is an uncontrolled document once printed or downloaded and is subject to change without notice. Date Created: 04/05/2018



THIRD ANGLE PROJECTION		REVISIONS		
	REV.	DESCRIPTION	DATE	APPROVED
	7	UPDATED FORMAT	01/05/06	MAM

REV 7

CCW/CW ROTATION - DUAL VOLTAGE
TYPE KC, KH, OR KCR - WITH THERMAL PROTECTOR



NOTE#1 - TO REVERSE ROTATION, INTERCHANGE T8 RED AND J10 BLACK LEADS.
NOTE#2 - WHEN MORE THAN ONE CAPACITOR IS USED, CONNECT IN PARALLEL.

SWITCH (H) - 115D958AA

REF. DIAG. - 52A104929

CONNECTION LABEL - 52X332946

SIGNATURES		DATE	TITLE	
MODEL	M.D.P.	05/21/88	 REGAL-BELOIT CORPORATION CONNECTION DIAGRAM	
DETAIL	.	.		
CHECKED	.	.		
ENGRG	.	.		
FOR ADDITIONAL INFO REFER TO:		MFG	SIZE: DRAWING A	
APPLIED PRACTICES	QUALITY	.		
DIMENSIONS ARE IN INCHES	ISSUED	M.D.P.		
MATERIAL		SOLID MODEL: 52A105383BB		

FME: 5KC36PN435GX

52A105383BB

REV 7

SCALE: 1.000 REF. No: .

SHEET 1 of 1