

PRODUCT INFORMATION PACKET

Model No: 056B11F5302
Catalog No: G579
3/4, 1140, TEFC, 56C, 1/60/115/208-230
Totally Enclosed Fan Cooled (TEFC)



Regal and Marathon are trademarks of Regal Beloit Corporation or one of its affiliated companies.
©2018 Regal Beloit Corporation, All Rights Reserved. MC017097E





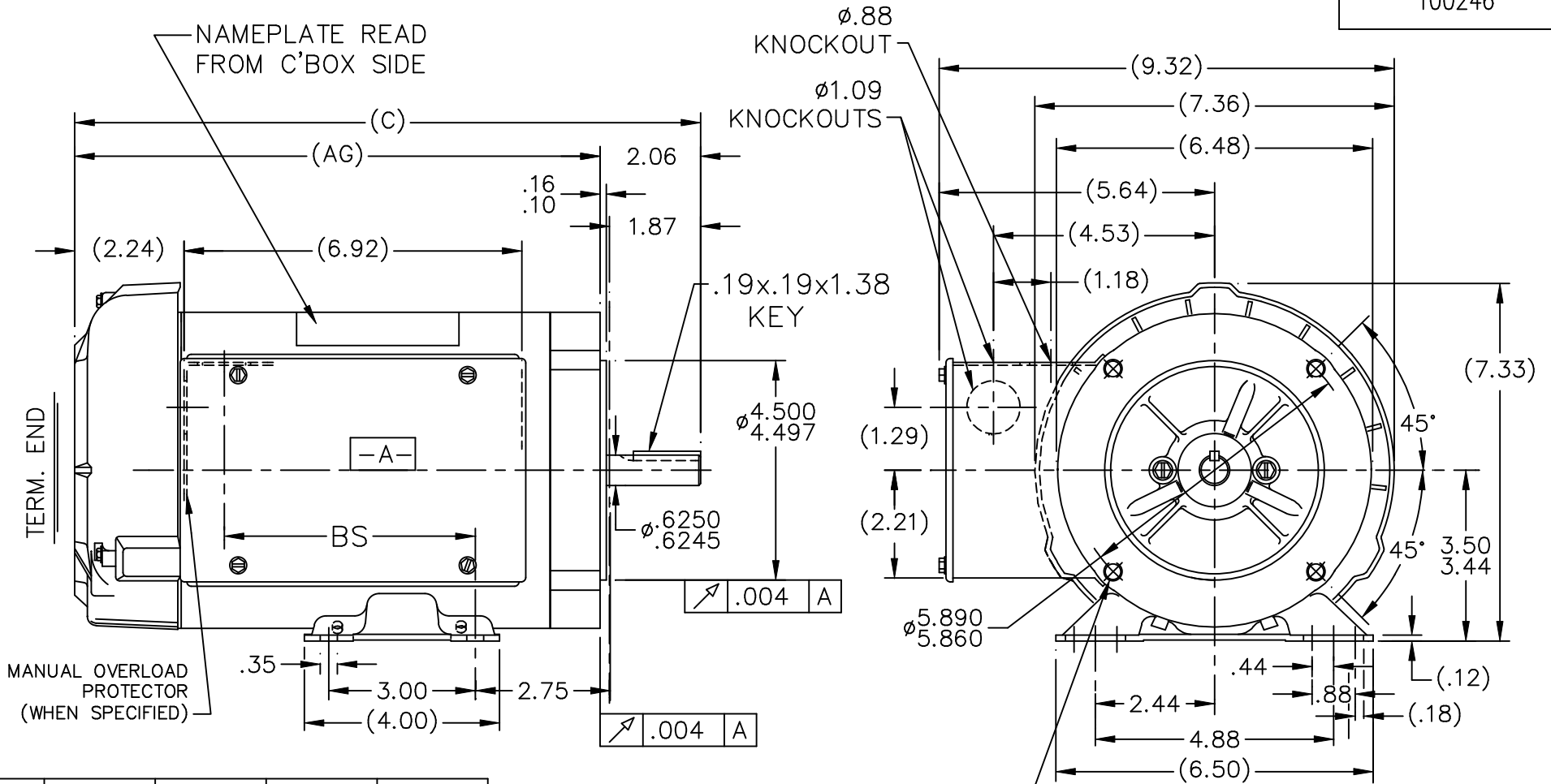
Nameplate Specifications

Output HP	0.75 Hp	Output KW	0.56 kW
Frequency	60 Hz	Voltage	115/208-230 V
Current	11.4/5.8-5.7 A	Speed	1140 rpm
Service Factor	1.15	Phase	1
Efficiency	68 %	Duty	CONTINUOUS
Insulation Class	B	Design Code	N
KVA Code	L	Frame	56C
Enclosure	TEFC	Overload Protector	NOT
Ambient Temperature	40 °C	Drive End Bearing Size	6203
Opp Drive End Bearing Size	6203	UL	Recognized
CSA	Y	CE	Y
IP Code	43		

Technical Specifications

Electrical Type	CAP START CAP RUN	Starting Method	ACROSS THE LINE
Poles	6	Rotation	SELECTIVE CCW
Mounting	BOLT-ON	Motor Orientation	HORIZONTAL
Drive End Bearing	BALL	Opp Drive End Bearing	BALL
Frame Material	ROLLED STEEL	Shaft Type	STANDARD 56
Overall Length	13.82 in	Frame Length	8.56 in
Shaft Diameter	0.63 in	Shaft Extension	2.06 in
Assembly/Box Mounting	F1 ONLY		
Outline Drawing	A-100246-856	Connection Diagram	A-102006-51

This is an uncontrolled document once printed or downloaded and is subject to change without notice. Date Created: 04/05/2018



DASH	FR.	C	AG	BS
756	56-75	12.82	10.75	5.14
806	56-80	13.32	11.25	5.64
856	56-85	13.82	11.75	6.14
906	56-90	14.32	12.25	6.64
956	56-95	14.82	12.75	7.14

3/8-16 UNC-2B
 .56 MIN. FULL THD.
 4 HOLES

NOTES:
 1. REMOVABLE BASE

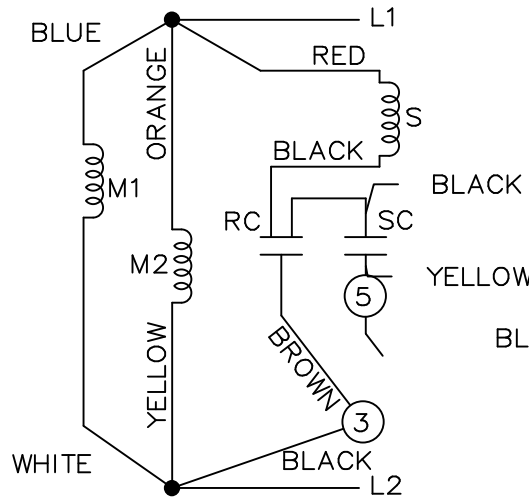
		TOLERANCES UNLESS SPECIFIED		MARATHON ELECTRIC		DRAWN MJD 03-27-1998	
		DEC.	INCHES	TITLE OUTLINE		CHK ML 04-02-1998	
		.X	±.1	56 FR. - BB - 1° - C'FACE <td colspan="2">APPD GK 04-02-1998</td>		APPD GK 04-02-1998	
		.XX	±.03	MAT'L. <td colspan="2">SCALE 5=16</td>		SCALE 5=16	
		.XXX	±.005	FINISH <td colspan="2">REF</td>		REF	
2	REDRAWN ON CADD	MJD	04-02-1998	.XXXX	±.0005	FMF	
NO.	REVISION	BY & DATE	CHK	ANG	±7'30"	PREV	
THIS DRAWING IN DESIGN AND DETAIL IS OUR PROPERTY AND MUST NOT BE USED EXCEPT IN CONNECTION WITH OUR WORK ALL RIGHTS OF DESIGN AND INVENTION ARE RESERVED THIS IS AN ELECTRONICALLY GENERATED DOCUMENT - DO NOT SCALE THIS PRINT				RFP	CAD FILE 100246	SIZE A	DRAWING NO. 100246
				DIST WP		PAGE OF	REV. 2

```
ERROR: syntaxerror  
OFFENDING COMMAND: --nostringval--
```

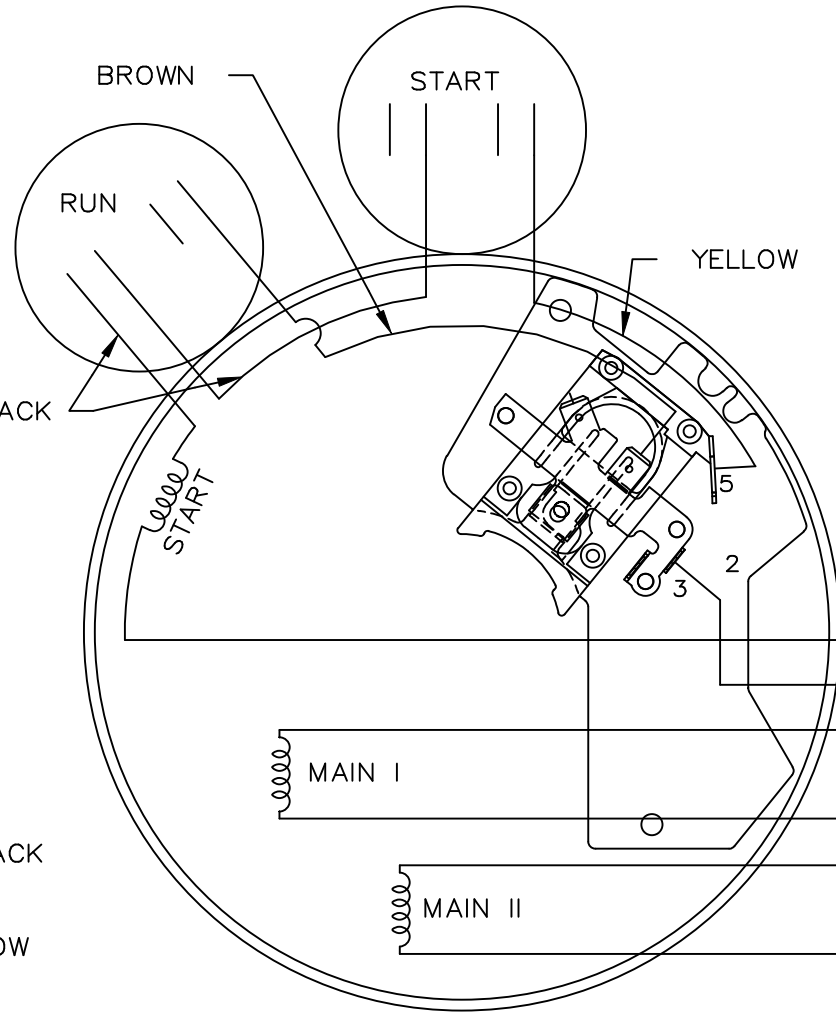
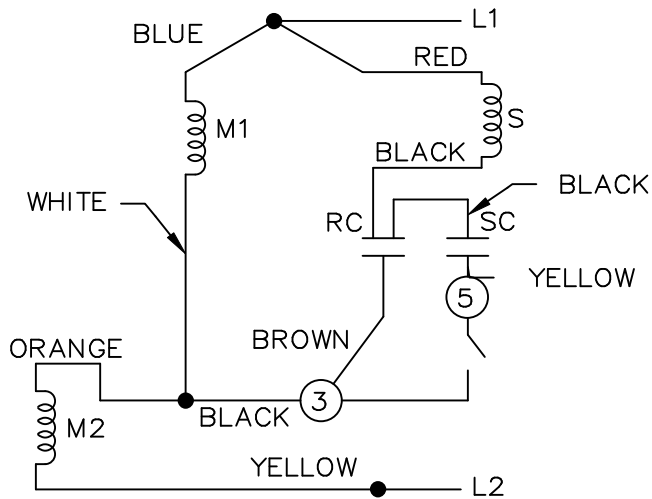
```
STACK :
```

```
/terminate  
-dictionary-  
/Pscript_WinNT_Compact  
-dictionary-
```

LOW VOLTAGE C.C.W.

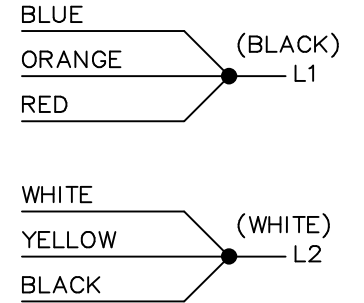


HIGH VOLTAGE C.C.W.

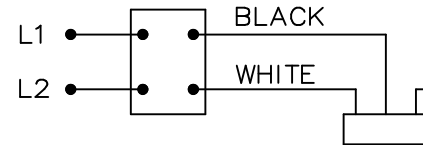
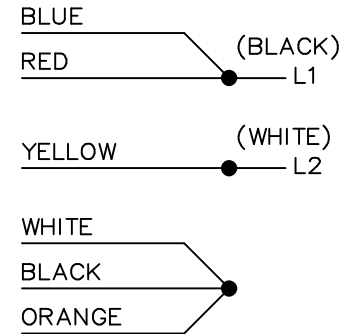


DUAL VOLTAGE CAPACITOR
START-CAP RUN NO OVERLOAD
SELECT ROTATION

LOW VOLTAGE C.C.W. ROTATION



HIGH VOLTAGE C.C.W. ROTATION



FOR C.W. ROTATION,
EITHER VOLTAGE,
INTERCHANGE RED WITH
BLACK LEAD

			TOLERANCES UNLESS SPECIFIED		MARATHON ELECTRIC	DRAWN DT	
			DEC.	INCHES		CHK	
			.X	±.1	TITLE CONNECTION DIAGRAM	06-07-1996	
			.XX	±.02		MRB	06-16-1996
			.XXX	±.005		APPD	GK 06-16-1996
			.XXXX	±.0005		SCALE	5=8
9	ADDED CORD AND SWITCH VIEW MU37521	DRS 06-22-2001				REF	
8	REDRAWN ON CADD	DT 06-16-1996			MAT'L.	FMF	
NO.	REVISION	BY & DATE	CHK	ANG	FINISH	PREV	
THIS DRAWING IN DESIGN AND DETAIL IS OUR PROPERTY AND MUST NOT BE USED EXCEPT IN CONNECTION WITH OUR WORK ALL RIGHTS OF DESIGN AND INVENTION ARE RESERVED THIS IS AN ELECTRONICALLY GENERATED DOCUMENT - DO NOT SCALE THIS PRINT			RFP		CAD FILE 102006-51	SIZE	DRAWING NO. PAGE OF REV.
			DIST	WP		A	102006-51 9

