

PRODUCT INFORMATION PACKET

Model No: 184TBFW7726
Catalog No: I214A
5,1800,TEFC,184T,1/60/230
Totally Enclosed Fan Cooled (TEFC)



Regal and Marathon are trademarks of Regal Beloit Corporation or one of its affiliated companies.
©2018 Regal Beloit Corporation, All Rights Reserved. MC017097E





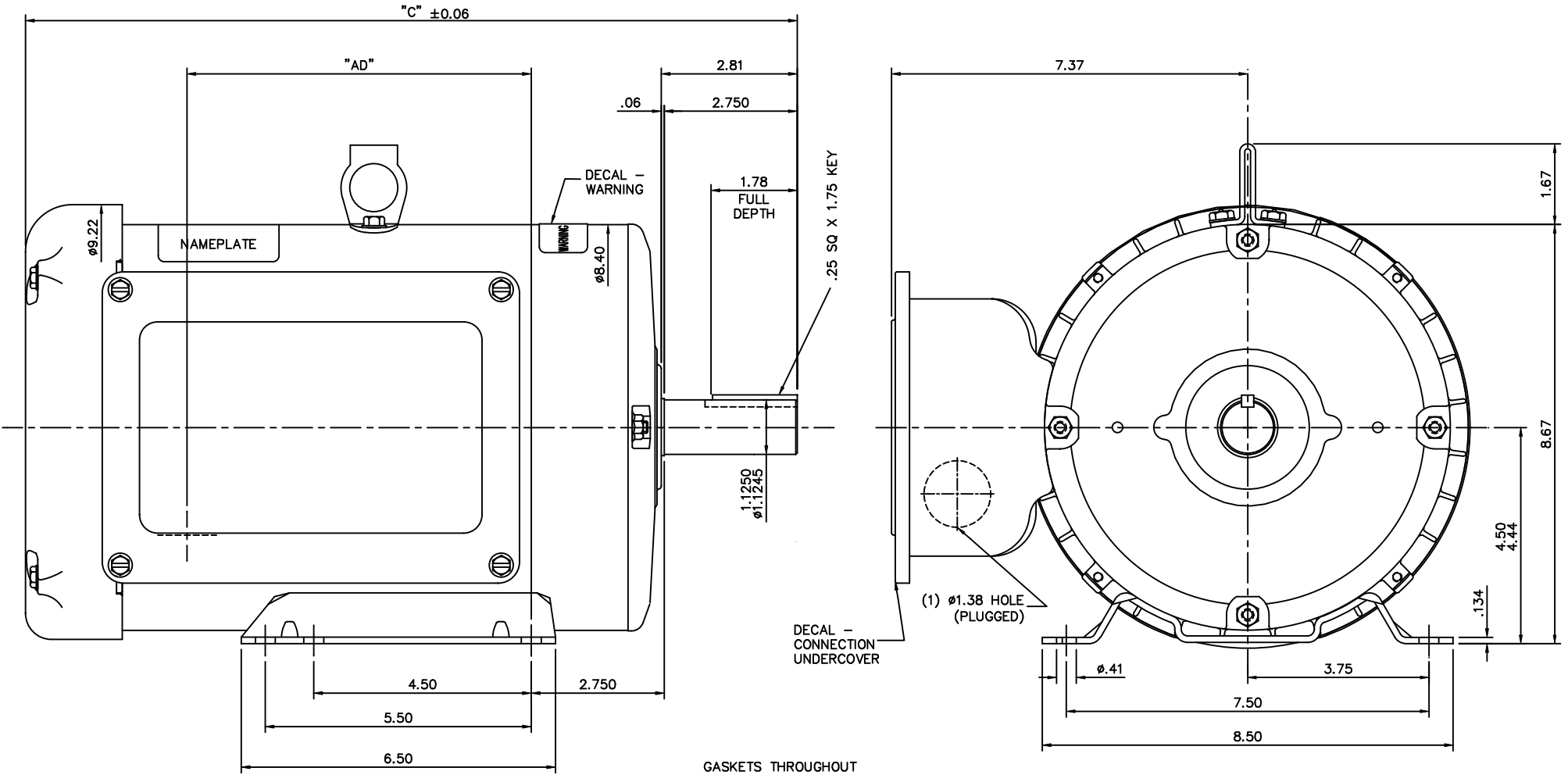
Nameplate Specifications

Output HP	5 Hp	Output KW	3.7 kW
Frequency	60 Hz	Voltage	208-230 V
Current	21.5-19.5 A	Speed	1755 rpm
Service Factor	1.15	Phase	1
Efficiency	85.5 %	Duty	CONTINUOUS
Insulation Class	F	Design Code	L
KVA Code	G	Frame	184T
Enclosure	TEFC	Overload Protector	NOT
Ambient Temperature	40 °C	Drive End Bearing Size	6206
Opp Drive End Bearing Size	6205	UL	Recognized
CSA	Y	CE	Y
IP Code	43		


Technical Specifications

Electrical Type	CAP START CAP RUN	Starting Method	ACROSS THE LINE
Poles	4	Rotation	SELECTIVE CCW
Mounting	RIGID	Motor Orientation	HORIZONTAL
Drive End Bearing	BALL	Opp Drive End Bearing	BALL
Frame Material	ROLLED STEEL	Shaft Type	T
Overall Length	17.46 in	Frame Length	12 in
Shaft Diameter	1.13 in	Shaft Extension	2.81 in
Assembly/Box Mounting	F1 ONLY		
Outline Drawing	035632-1200	Connection Diagram	005018.01ME

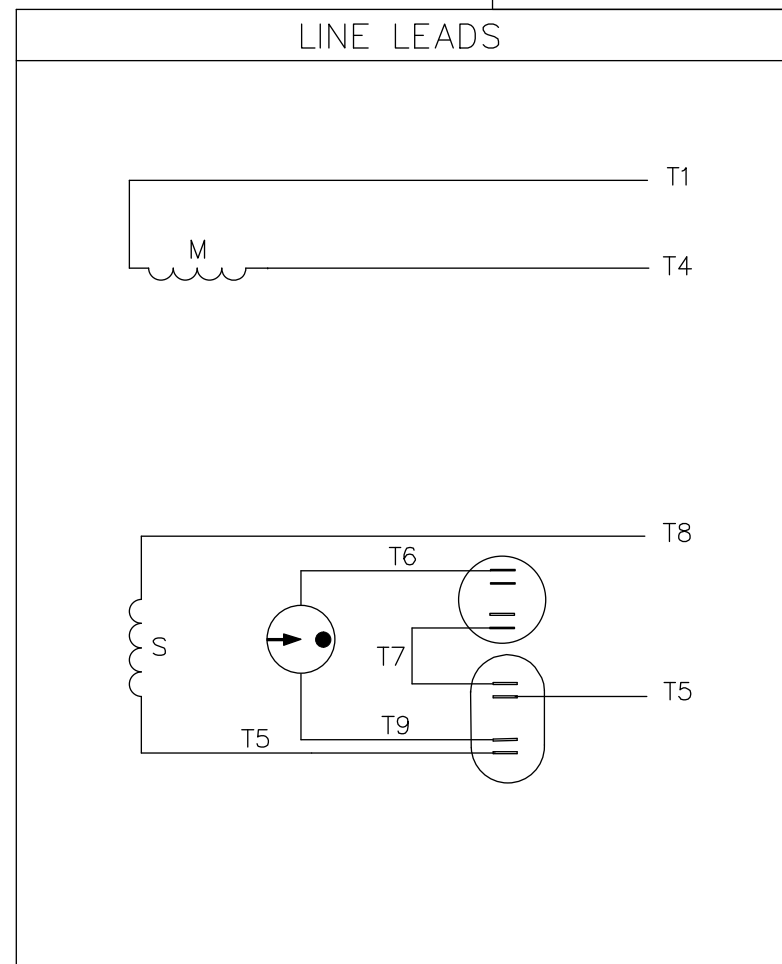
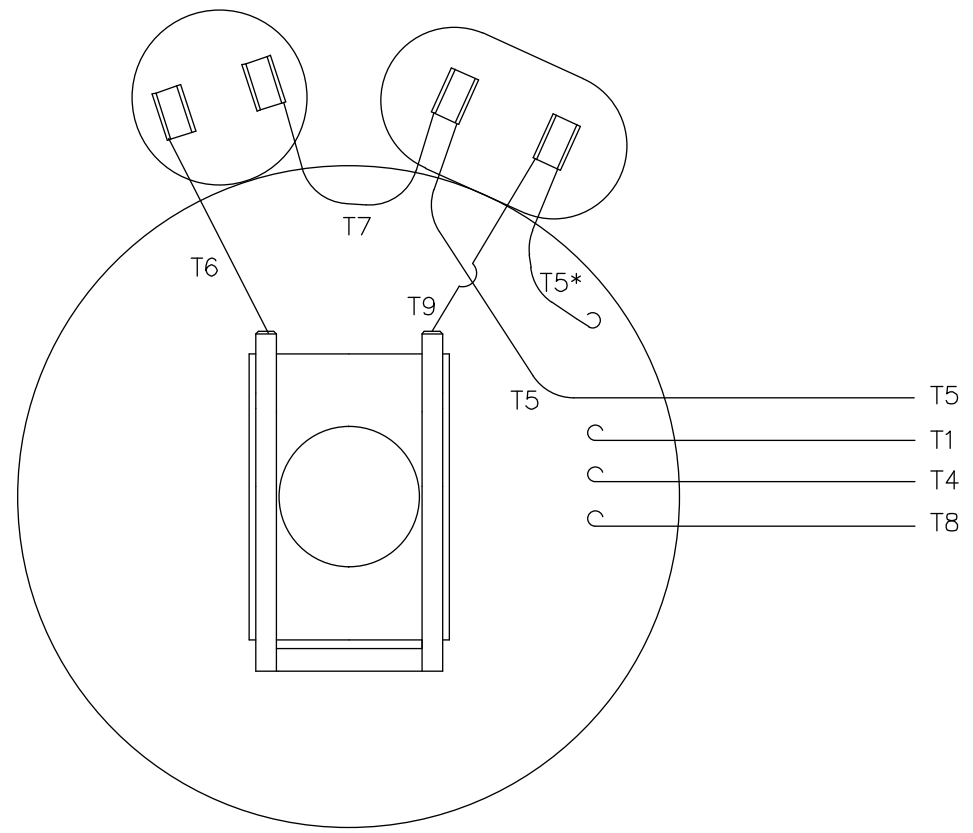
This is an uncontrolled document once printed or downloaded and is subject to change without notice. Date Created: 04/05/2018



MAXIMUM FACE RUNOUT TO BE .004 T.I.R.
 MAXIMUM PILOT ECCENTRICITY TO BE .004 T.I.R.
 PERMISSIBLE SHAFT RUNOUT TO BE .004 T.I.R.

DASH NO.	"C"	"AD"	TOLERANCES UNLESS SPECIFIED		FINISH	MATERIAL	TITLE	DRAWN	DATE			
			DEC.	INCHES								
1050	15.96	7.12	.X	±0			 OUTLINE - 180T TEFC-RIGID	YS 01/21/08	CHK			
1100	16.46	7.62	.XX	±0				APPD				
1150	16.96	8.12	.XXX	±0				SCALE				
1200	17.46	8.62	.XXXX	±0				REF 035540&037596				
1100	17.96	9.12						FMF 1841BFW7726				
1150	18.46	9.62						PREV				
NO. REVISION			BY & DATE		CHK	ANG	FINISH	CAD FILE	035632	SIZE	DRAWING NO.	REV.
THIS DRAWING IN DESIGN AND DETAIL IS OUR PROPERTY AND MUST NOT BE USED EXCEPT IN CONNECTION WITH OUR WORK ALL RIGHTS OF DESIGN AND INVENTION ARE RESERVED THIS IS AN ELECTRONICALLY GENERATED DOCUMENT - DO NOT SCALE THIS PRINT										B	035632	

VIEW FROM OUTSIDE OF MOTOR AT SWITCH END.



ROTATION FACING LEAD END	L1	L2
C.C.W.	T1,T8	T4,T5
C.W.	T1,T5	T4,T8

* THIS LEAD MAY BE WHITE

		TOLERANCES UNLESS SPECIFIED		MARATHON ELECTRIC		DRAWN RDW 6/5/03	
		DEC.	INCHES			CHK	
		.X	±.1	TITLE EXTERNAL WIRING DIAGRAM TYPE "K" W/O PROTECTOR		APPD	
		.XX	±.01			SCALE 1=1	
		.XXX	±.005			REF 005018	
		.XXXX	±.0005			FMF 139047	
NO.	REVISION	BY & DATE	CHK	ANG	±1/2'	FINISH	PREV
			RFP	6/5/03		CAD FILE 00501801ME	SIZE A
THIS DRAWING IN DESIGN AND DETAIL IS OUR PROPERTY AND MUST NOT BE USED EXCEPT IN CONNECTION WITH OUR WORK ALL RIGHTS OF DESIGN AND INVENTION ARE RESERVED THIS IS AN ELECTRONICALLY GENERATED DOCUMENT - DO NOT SCALE THIS PRINT			DIST			DRAWING NO. 005018-01ME	REV.

CERTIFICATION DATA SHEET

Model#: 184TBFW7726 AA **WINDING#:** K8495 NONE 2
CONN. DIAGRAM: 005018.01ME **ASSEMBLY:** F1 ONLY
OUTLINE: 035632-1200

TYPICAL MOTOR PERFORMANCE DATA

HP	KW	SYNC. RPM	F.L. RPM	FRAME	ENCLOSURE	KVA CODE	DESIGN
5	3.7	1800	1755	184T	TEFC	G	L

PH	Hz	VOLTS	FL AMPS	START TYPE	DUTY	INSL	S.F	AMB°C	ELEVATION
1	60	208-230	21.5-19.5	ACROSS THE LINE	CONTINUOUS	F4	1.15	40	3300

FULL LOAD EFF: 85.5	3/4 LOAD EFF: 85	1/2 LOAD EFF: 80.9	GTD. EFF	ELEC. TYPE	NO LOAD AMPS
FULL LOAD PF: 96.5	3/4 LOAD PF: 97.2	1/2 LOAD PF: 96.6	82.5	CAP START CAP RUN	2.9

F.L. TORQUE	LOCKED ROTOR AMPS	L.R. TORQUE	B.D. TORQUE	F.L. RISE°C
14.9 LB-FT	133.5	38.9 LB-FT 261	37.5 LB-FT 252	73

SOUND PRESSURE @ 3 FT.	SOUND POWER	ROTOR WK^2	MAX. WK^2	SAFE STALL TIME	STARTS /HOUR	APPROX. MOTOR WGT
0 dBA	10 dBA	0 LB-FT^2	0 LB-FT^2	10 SEC.	2	0 LBS.

***** SUPPLEMENTAL INFORMATION *****

DE BRACKET TYPE	ODE BRACKET TYPE	MOUNT TYPE	ORIENTATION	SEVERE DUTY	HAZARDOUS LOCATION	DRIP COVER	SCREENS	PAINT
STANDARD	STANDARD	RIGID	HORIZONTAL	FALSE	NONE	FALSE	NONE	BLUE (ENAMEL)

BEARINGS		GREASE	SHAFT TYPE	SPECIAL DE	SPECIAL ODE	SHAFT MATERIAL	FRAME MATERIAL
DE	OPE						
BALL	BALL	POLYREX EM	T	NONE	NONE	AISI 1045 (C-240)	ROLLED STEEL
6206	6205						

THERMO-PROTECTORS				THERMISTORS	CONTROL	SPACE /n HEATERS
THERMOSTATS	PROTECTORS	WDG RTDs	BRG RTDs			
NONE	NOT	NONE	NONE	NONE	FALSE	NONE VOLTS

If Inverter equals NONE, contact factory for further information

*
N
O
T
E
S
*

INVERTER TORQUE: NONE
INV. HP SPEED RANGE: NONE
ENCODER: NONE
NONE NONE
NONE NONE PPR
BRAKE: NONE NONE
NONE P/N NONE
NONE NONE
NONE FT-LB NONE V NONE Hz

DATE: 06/28/2017 06:14:51 AM
 FORM 3531 REV.3 02/07/99
 ** Subject to change without notice.