

PRODUCT INFORMATION PACKET



Model No: M1120042.00
Catalog No: M1120042.00
Sub-Fractional Motor, 0.17 HP, 90 V, 1750 RPM, 31 Frame, TENV



Regal and LEESON are trademarks of Regal Rexnord Corporation or one of its affiliated companies.
©2025 Regal Rexnord Corporation, All Rights Reserved. MC017097E





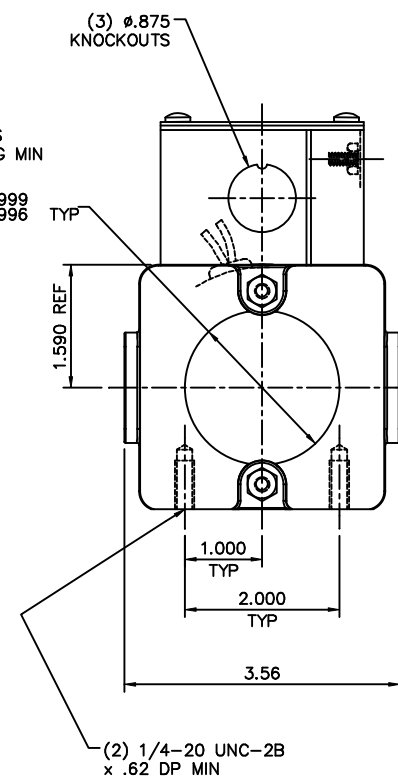
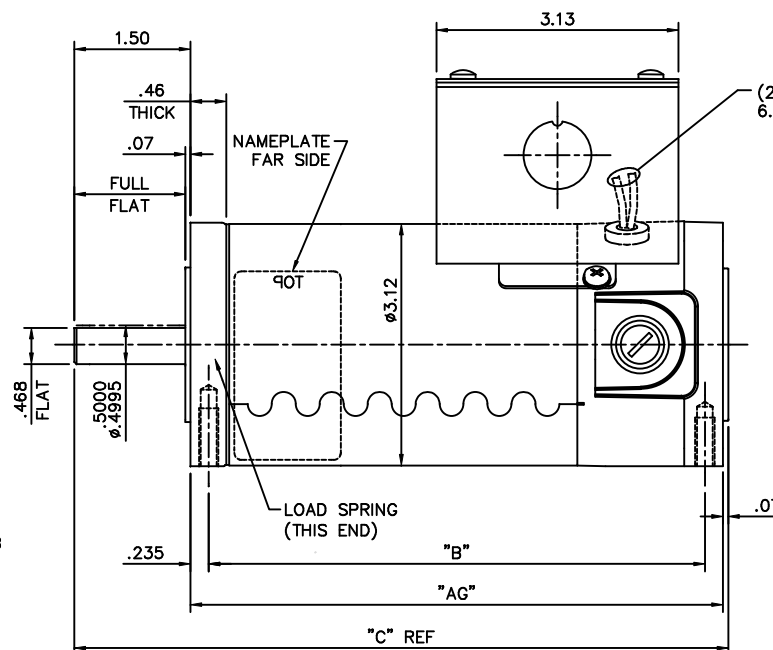
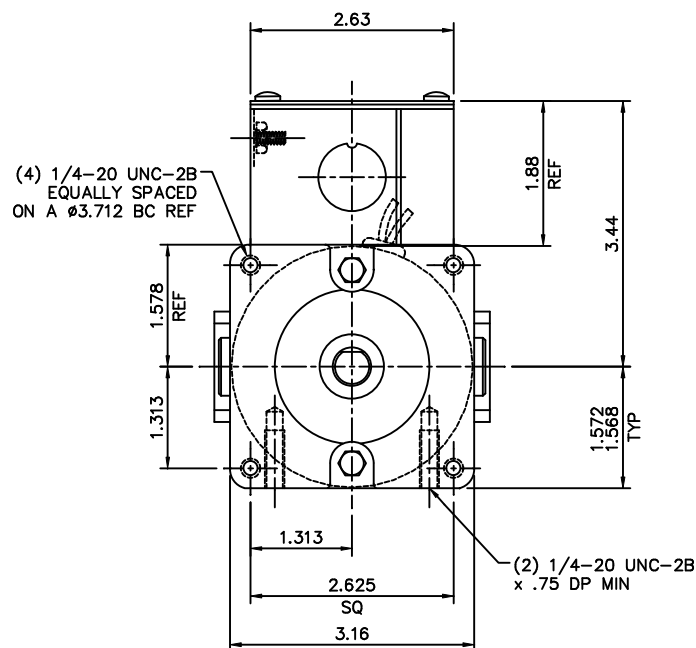
Nameplate Specifications

Output HP	0.17 Hp	Output KW	0.13 kW
Voltage	90 V	Speed	1750 rpm
Service Factor	1.0	Frame	31
Enclosure	Totally Enclosed Non Ventilated	Thermal Protection	No Protection
Efficiency	77.8 %	Ambient Temperature	40 °C
Current	1.8 A	Duty	Continuous
Insulation Class	F	Drive End Bearing Size	6201-13
Opp Drive End Bearing Size	6201-13	UL	Recognized
CSA	Y	CE	Y

Technical Specifications

Rotation	Reversible	Mounting	Round
Overall Length	9.45 in	Frame Length	5.50 in
Shaft Diameter	0.500 in	Shaft Extension	1.5 in
Torque	96 OZ-IN		
Outline Drawing	M1031034-M1120042	Connection Drawing	M1005321


This is an uncontrolled document once printed or downloaded and is subject to change without notice. Date Created:04/08/2025



M1120062.00	7.88	7.42	9.45	90	1/4	3500
M1120060.00	5.38	4.92	6.95	90	1/10	3500
M1120059.00	5.88	5.42	7.45	90	1/8	3500
M1120058.00	6.88	6.42	8.45	90	1/6	3500
M1120045.00	6.88	6.42	8.45	180	1/8	1750
M1120043.00	7.88	7.42	9.45	180	1/6	1750
M1120042.00	7.88	7.42	9.45	90	1/6	1750
M1120041.00	6.38	5.92	7.95	180	1/10	1750
M1120040.00	4.88	4.42	6.45	12/24	1/14-1/7	1750/4200
M1120039.00	5.38	4.92	6.95	180	1/15	1750
M1120027.00	6.88	6.42	8.45	90	1/8	1750
M1120014.00	5.88	5.42	7.45	90	1/10	1750
M1120013.00	5.38	4.92	6.95	90	1/15	1750
CATALOG NO.	"AG" DIM	"B" DIM	"C" DIM	VOLT	H.P.	RPM

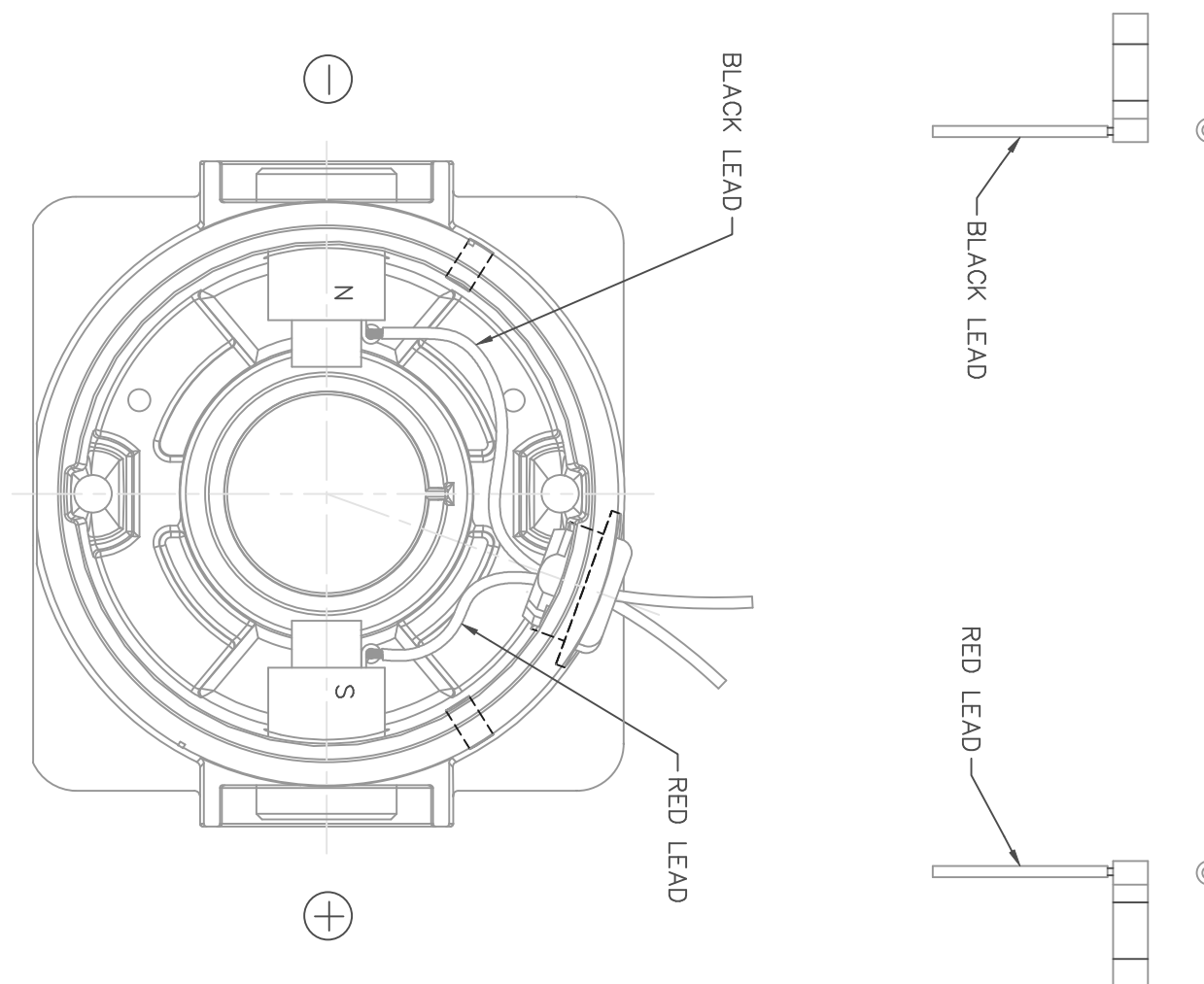
NOTES:


- 1) END CAP MOUNTING FEET TO BE PARALLEL TO EACH OTHER WITHIN .002

14	ADDED M1120060.00 TO TABLE, ECN 07-1640	IPG	5/18/07	SAD	TOLERANCES UNLESS SPECIFIED		ELECTRIC MOTORS GEARMOTORS AND DRIVES	DRAWN	IPG 11/9/06
13	ADDED M1120059.00 TO TABLE, ECN 07-1638	IPG	5/18/07	SAD	DEC. INCHES			CHK	SAD 11/9/06
12	CAT. M1120040.00: "AG" WAS 5.38, "B" WAS 4.92, "C" WAS 6.95, ECN 07-1635	IPG	5/18/07	SAD	.X ±.1			APPD	
11	ADDED M1120058.00 TO TABLE, ECN 07-1637	IPG	5/17/07	SAD	.XX ±.03			SCALE	5=8
10	ADDED M1120027.00 TO TABLE, ECN 07-1633	IPG	5/16/07	SAD	.XXX ±.005	TITLE	OUTLINE 31 FRAME DC	REF	M1030240.00
NO.	REVISION	BY & DATE	CHK	ANG	±1/2"	MAT'L	FINISH	FMF	M1120014.00
THIS DRAWING IN DESIGN AND DETAIL IS OUR PROPERTY AND MUST NOT BE USED EXCEPT IN CONNECTION WITH OUR WORK. ALL RIGHTS OF DESIGN AND INVENTION ARE RESERVED. THIS IS AN ELECTRONICALLY GENERATED DOCUMENT - DO NOT SCALE THIS PRINT								PREV	
RFP						CAD FILE	M1031034	SIZE	DRAWING NO.
DIST								B	M1031034.00
									REV

D.C. MOTORS

EXTERNAL CONNECTIONS FOR CCW ROTATION
VIEWING LEAD END OF MOTOR WITH RED LEAD
POSITIVE (+) AND BLACK LEAD NEGATIVE (-).
FOR CW ROTATION REVERSE POLARITY.



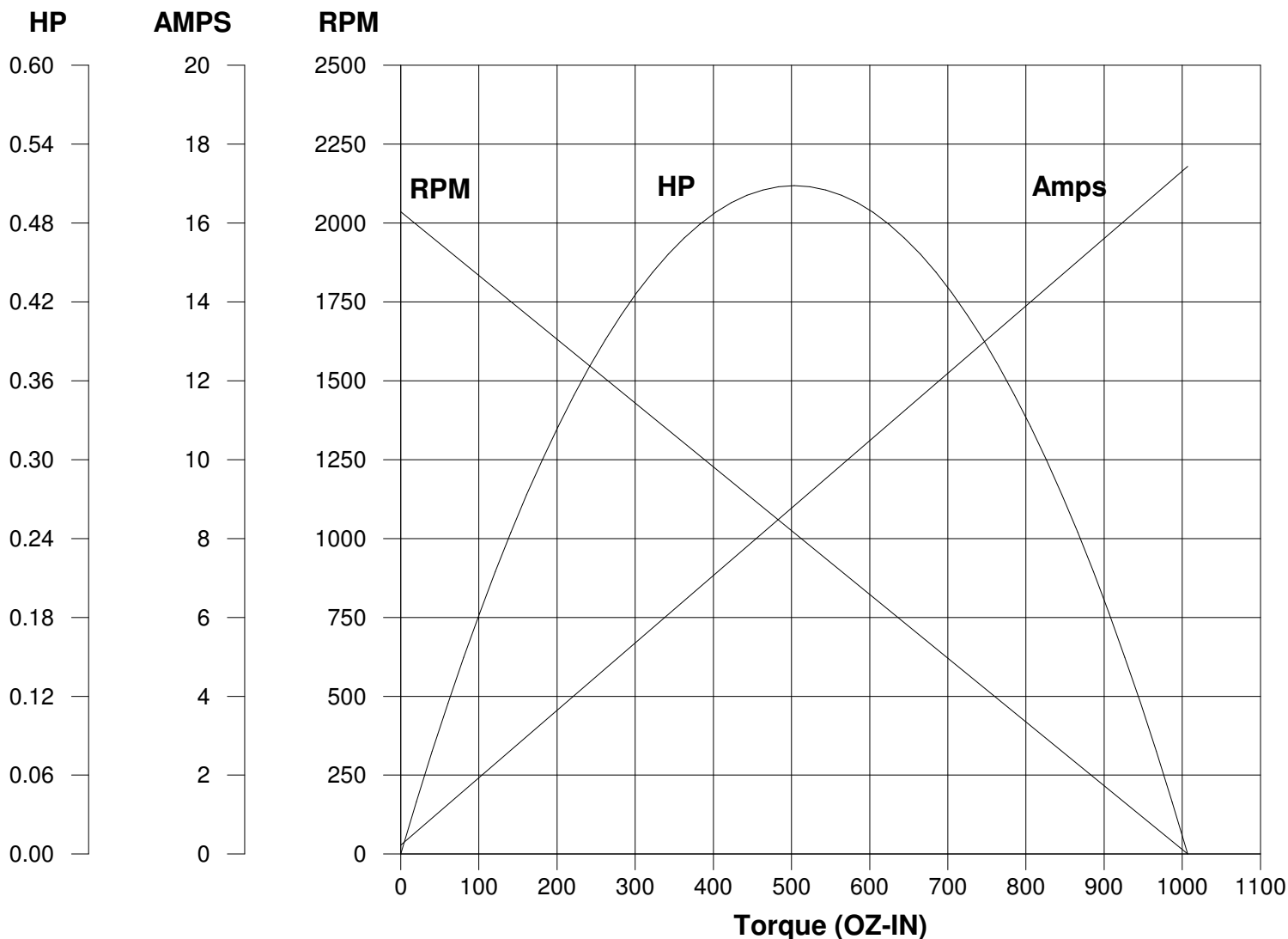
			TOLERANCES UNLESS SPECIFIED			ELECTRIC MOTORS GEARMOTORS AND DRIVES		DRAWN IPG 11/6/06	
			DEC.	INCHES				CHK SAD 11/6/06	
			.X	±.1				APPD	
			.XX	±.01		TITLE CONNECTION DIAGRAM		SCALE 1=1	
			.XXX	±.005				REF M1005036.01	
00	RELEASED PER 31 TT FR CONSOLIDATION, ECN 06-4430	IPG 11/6/06	SAD	.XXXX ±.0005	MAT'L.			FMF M1120014.00	
NO.	REVISION	BY & DATE	CHK	ANG ±1/2°	FINISH			PREV	
THIS DRAWING IN DESIGN AND DETAIL IS OUR PROPERTY AND MUST NOT BE USED EXCEPT IN CONNECTION WITH OUR WORK ALL RIGHTS OF DESIGN AND INVENTION ARE RESERVED THIS IS AN ELECTRONICALLY GENERATED DOCUMENT - DO NOT SCALE THIS PRINT			RFP		CAD FILE M1005321	SIZE A	DRAWING NO. M1005321.01		REV. 00
			DIST						

LEESON ELECTRIC CORPORATION

TYPICAL PERFORMANCE CURVE

FOR

DIRECT CURRENT PERMANENT MAGNET MOTOR

Model No. CM31D17NZ8Catalog No. M1120042.00HP 0.167RPM 1750DC Volts 90.0N.P. FLA 1.80F.F. 1.38Encl TENVType DNS.F. 1.00Max. Amb. 40.0 Deg CInsul. FFrame 31Duty CONT

Ra 4.4600 Ohms
 La 29.50 mHenrys
 Ja 10.30 OZ-IN²
 Ke 43.06 V/KRPM

Kt 58.23 OZ-IN/AMP
 Imax 24.1 AMPS Allowed
 FL Torque 96.00 OZ-IN
 FL EFF 77.80 %

Winding W- MD312327-1Prepared by S. BernhardtDate 02-23-2011