

# PRODUCT INFORMATION PACKET



Model No: CIM34D18FC2B

Catalog No: M1130139.00

...18KW-1/4HP..1800RPM.63D.IP54.180V...S1.40C.1.0SF.B14.CIM34D18FC2B.....DC METRIC.....

Metric Motors



Regal and Leeson are trademarks of Regal Beloit Corporation or one of its affiliated companies.

©2018 Regal Beloit Corporation, All Rights Reserved. MC017097E





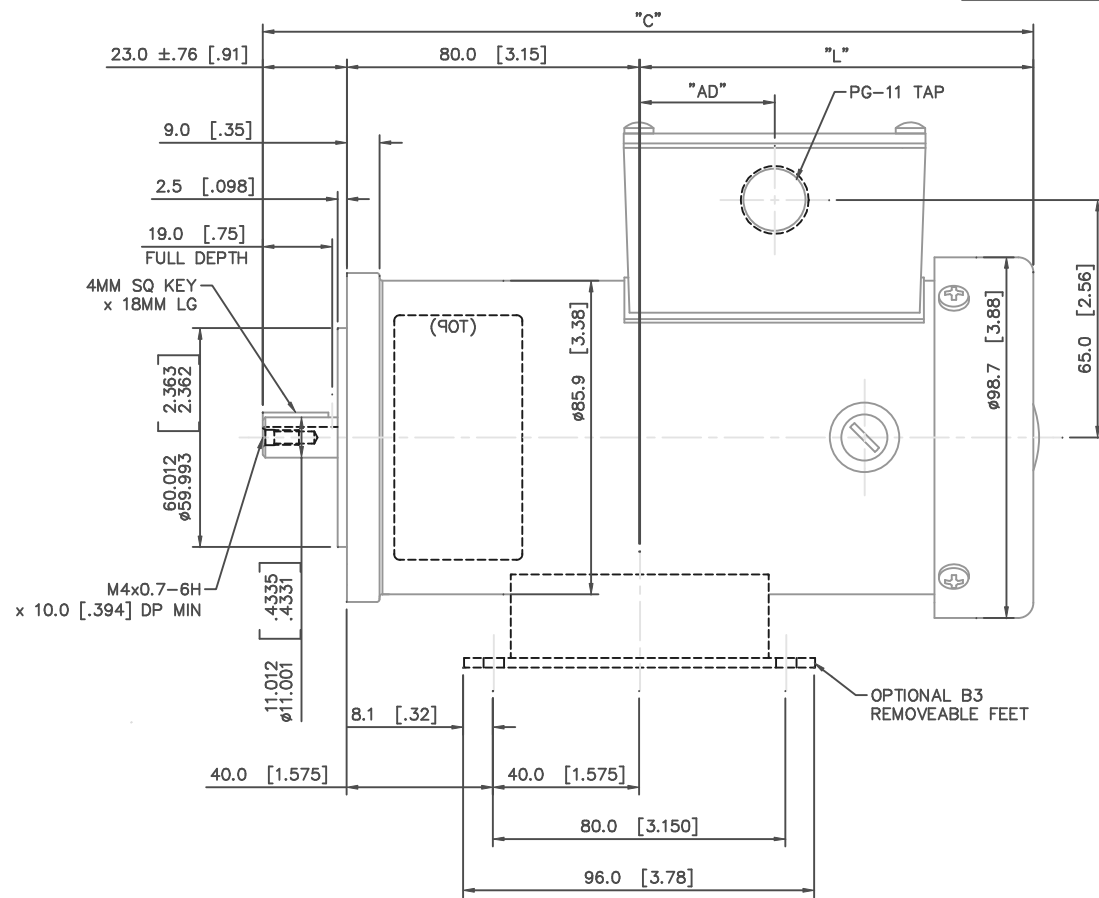
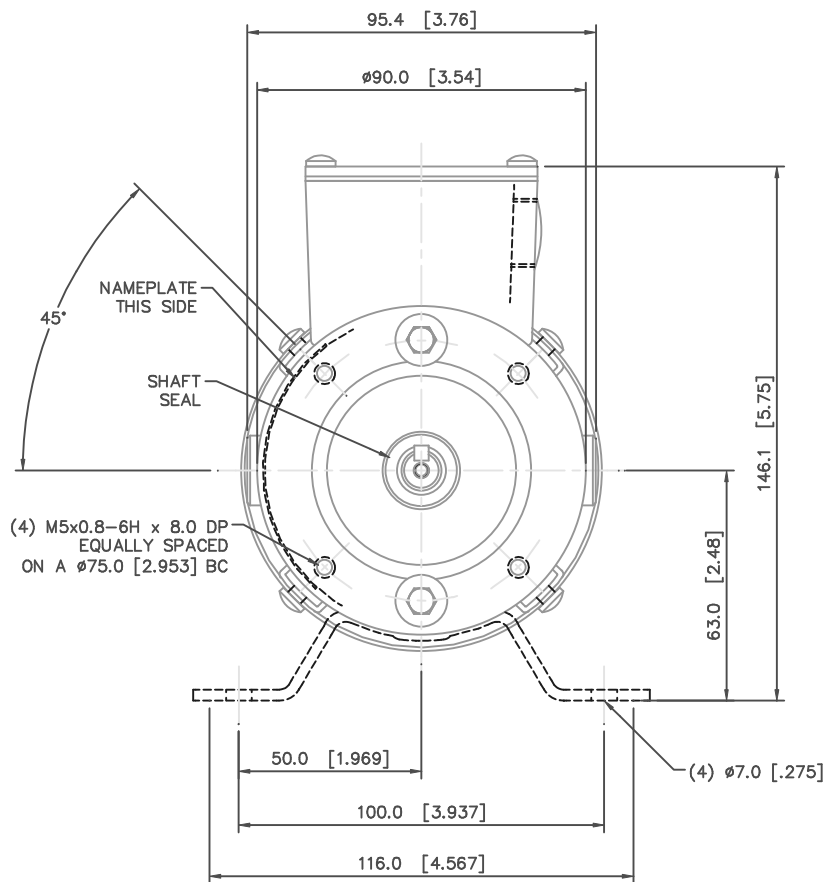
### Nameplate Specifications

Output KW	<b>0.25 kW</b>	Voltage	<b>180 V</b>
Current	<b>1.7 A</b>	Speed	<b>1800 rpm</b>
Service Factor	<b>1</b>	Efficiency	<b>74.4 %</b>
Duty	<b>S1</b>	Insulation Class	<b>H</b>
Frame	<b>63D</b>	Enclosure	<b>IP54</b>
Overload Protector	<b>No</b>	Ambient Temperature	<b>40 °C</b>
Drive End Bearing Size	<b>6201-13</b>	Opp Drive End Bearing Size	<b>6201-13</b>
UL	<b>Recognized</b>	CSA	<b>Y</b>
CE	<b>Y</b>		

### Technical Specifications

Rotation	<b>Reversible</b>	Mounting	<b>B14</b>
Overall Length	<b>9.50 in</b>	Frame Length	<b>7.18 in</b>
Shaft Diameter	<b>0.437 in</b>	Shaft Extension	<b>0.91 in</b>
Outline Drawing	<b>M1030282-G63</b>	Connection Diagram	<b>M100512601</b>

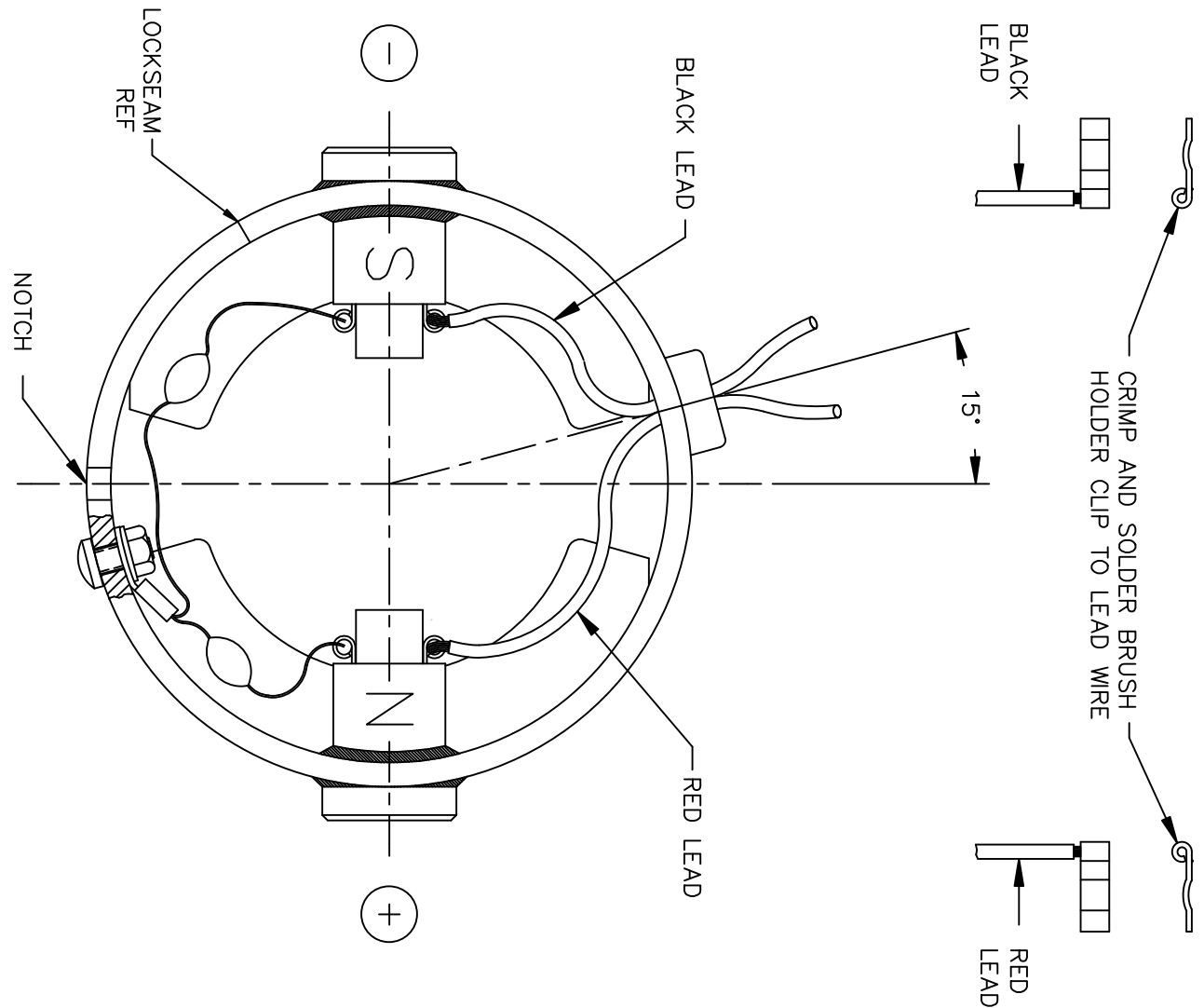
This is an uncontrolled document once printed or downloaded and is subject to change without notice. Date Created: 10/15/2018



G63	241.3 [9.50]	138.2 [5.44]	67.3 [2.65]
E63	210.8 [8.30]	107.7 [4.24]	36.8 [1.45]
FRAME	C	L	AD

		TOLERANCES UNLESS SPECIFIED		LEESON		ELECTRIC MOTORS GEARMOTORS AND DRIVES		DRAWN SPV 02/05/92			
		DEC.	INCHES					CHK			
04	ADDED ±.76 TO THE 23.0 [.905] DIM PER ECR 82033	BPW	04/21/03	SAD	.X	±.1	TITLE 34 FRAME DC – IEC D63 – B14 FACE	APPD	DJW 03/02/92		
03	DIM 9.50 WAS 9.504, 8.30 WAS 8.304, ECR 79823	IPG	08/22/01	SAD	.XX	±.03		SCALE	3=4		
02	REVISED TO NEW FAN, ADDED METRIC DIM'S	SPV	02/18/97		.XXX	±.005		REF			
01	ADDED NAMEPLATE	DWF	06/24/92		.XXXX	±.0005	MAT'L	FMF	M1130139.00		
NO.	REVISION	BY & DATE		CHK	ANG	±1/2'	FINISH	STOCK			
THIS DRAWING IN DESIGN AND DETAIL IS OUR PROPERTY AND MUST NOT BE USED EXCEPT IN CONNECTION WITH OUR WORK ALL RIGHTS OF DESIGN AND INVENTION ARE RESERVED THIS IS AN ELECTRONICALLY GENERATED DOCUMENT – DO NOT SCALE THIS PRINT				RFP			CAD FILE	M1030282	SIZE	DRAWING NO.	REV.
				DIST				B	M1030282.00	04	

DC MOTORS



**CAUTION!** FILTER CIRCUIT LEADS WITH BRUSH CLIPS MUST NOT TOUCH HOUSING WALL (INSIDE)

EXTERNAL CONNECTIONS FOR CW ROTATION VIEWING LEAD END OF MOTOR WITH RED LEAD POSITIVE (+) FOR CCW ROTATION REVERSE POLARITY

				TOLERANCES UNLESS SPECIFIED		<b>LEESON</b> ELECTRIC MOTORS GEARMOTORS AND DRIVES	DRAWN SPV 01/27/92	
				DEC.	INCHES		CHK	
				.X	±.1		APPD DWF 01/27/92	
02	REVERSED POLARITY FOR CWLE ROTATION	SMB 11/20/03	IPG	.XX	±.01	TITLE CONNECTION DIAGRAM WITH FILTER CIRCUIT	SCALE 1=1	
	PER M1130392.00			.XXX	±.005		REF	
01	REMOVED PART NUMBERS	DWF 05/07/96		.XXXX	±.0005	MAT'L.	FMF M1130136.00	
NO.	REVISION	BY & DATE	CHK	ANG	±1/2'	FINISH	PREV	
THIS DRAWING IN DESIGN AND DETAIL IS OUR PROPERTY AND MUST NOT BE USED EXCEPT IN CONNECTION WITH OUR WORK ALL RIGHTS OF DESIGN AND INVENTION ARE RESERVED THIS IS AN ELECTRONICALLY GENERATED DOCUMENT - DO NOT SCALE THIS PRINT			RFP	CAD FILE M100512601		SIZE A	DRAWING NO. M1005126.01	REV. 02
			DIST					