

PRODUCT INFORMATION PACKET



Model No: CIM34D18FC10B

Catalog No: M1130297.00

...18KW-1/4HP..1800RPM.63D.IP54.24V...S1.40C.1.0SF.B14.CIM34D18FC10B.....

Metric Motors



Regal and Leeson are trademarks of Regal Beloit Corporation or one of its affiliated companies.

©2018 Regal Beloit Corporation, All Rights Reserved. MC017097E





Nameplate Specifications

Output KW	0.18 kW	Voltage	24 V
Current	10.0 A	Speed	1800 rpm
Service Factor	1	Efficiency	76.5 %
Duty	S1	Insulation Class	F
Frame	63D	Enclosure	IP54
Overload Protector	No	Ambient Temperature	40 °C
Drive End Bearing Size	6201-13	Opp Drive End Bearing Size	6201-13
UL	Recognized	CSA	Y
CE	N		

Technical Specifications

Rotation	Reversible	Mounting	B14
Overall Length	8.75 in	Frame Length	6.43 in
Shaft Diameter	0.437 in	Shaft Extension	0.905 in
Outline Drawing	M1030621	Connection Diagram	M100514801

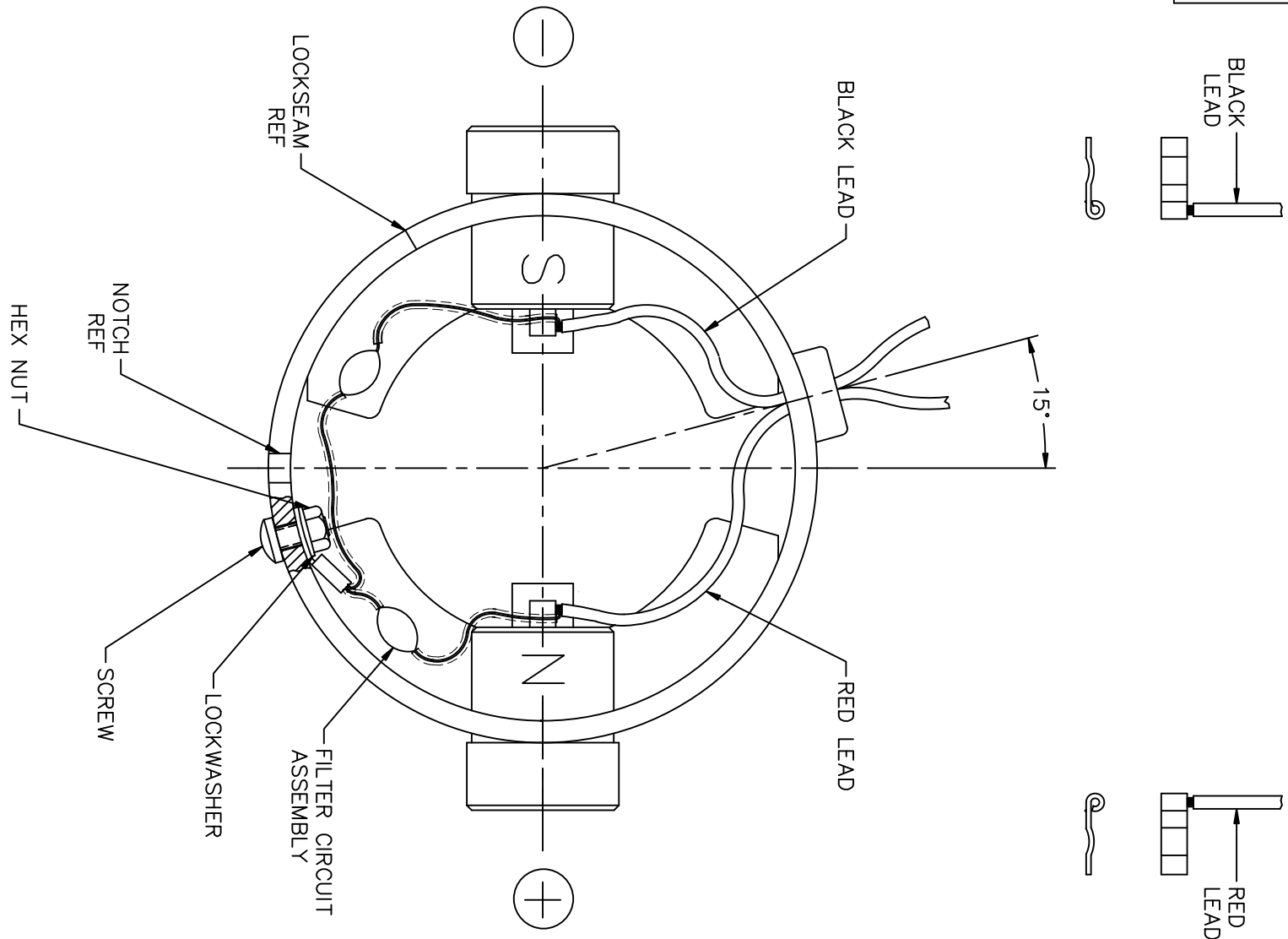
This is an uncontrolled document once printed or downloaded and is subject to change without notice. Date Created: 10/15/2018

ERROR: syntaxerror
OFFENDING COMMAND: --nostringval--


STACK:

-savelevel-

DC MOTORS



EXTERNAL CONNECTIONS FOR CW ROTATION VIEWING
LEAD END OF MOTOR WITH RED LEAD POSITIVE (+)
FOR CCW ROTATION REVERSE POLARITY

				TOLERANCES UNLESS SPECIFIED		 ELECTRIC MOTORS GEARMOTORS AND DRIVES	DRAWN DWF 08/21/93 CHK APPD
NO.	REVISION	BY & DATE	CHK	ANG	±		SCALE 1=1
03	ADDED INSULATION TO FILTER ASSEMBLY LEADS, ISAAC 11-0805	IPG 3/18/2011	DEC.	.X	±.1	TITLE CONNECTION DIAGRAM WITH FILTER CIRCUIT MAT'L. SEE ABOVE FINISH	REF M1005126.01
02	CORRECTED "N" & "S", ECR 83508	SMB 12/18/03	IPG	.XX	±.01		FMF M1130199.00
01	6-32 NUT WAS M3.5 & 6-32 SCREW WAS M3.5, REMOVED WASHER, ECR 69963	06/21/99		.XXX	±.005		PREV
				.XXXX	±.0005		
			RFP	ANG	±1/2'	CAD FILE M100514801	DRAWING NO. M1005148.01
			DIST			SIZE A	REV. 03