

PRODUCT INFORMATION PACKET



Model No: M1135109.00
Catalog No: M1135109.00
Parallel Shaft Gearmotor, 0.25 HP, 90 V, 50 RPM, 34 Frame, TENV



Regal and LEESON are trademarks of Regal Rexnord Corporation or one of its affiliated companies.
©2025 Regal Rexnord Corporation, All Rights Reserved. MC017097E





Nameplate Specifications

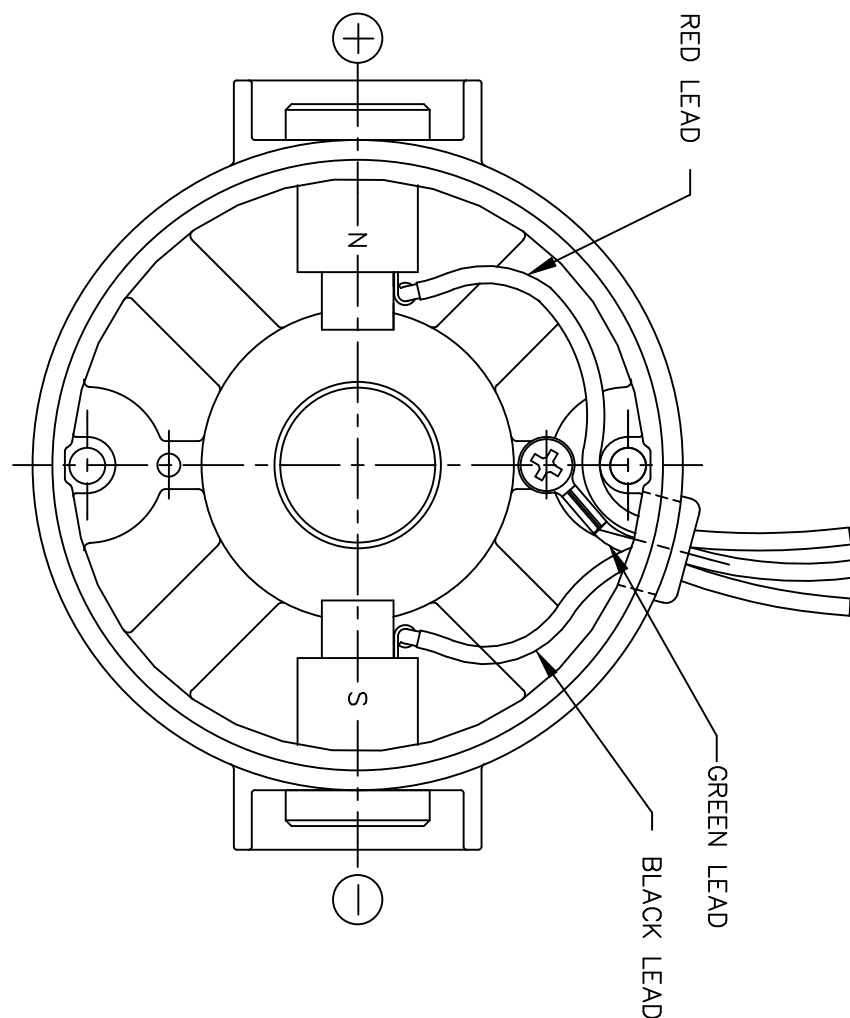
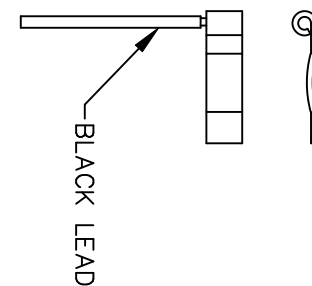
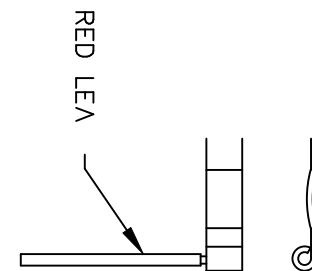
Output HP	0.25 Hp	Output KW	0.19 kW
Voltage	90 V	Speed	50 rpm
Service Factor	1.0	Frame	34
Enclosure	Totally Enclosed Non Ventilated	Thermal Protection	No Protection
Efficiency	65.2 %	Ambient Temperature	40 °C
Current	2.3 A	Duty	Continuous
Insulation Class	F	Drive End Bearing Size	6201
Opp Drive End Bearing Size	608	UL	Recognized
CSA	Y	CE	Y

Technical Specifications


Rotation	Reversible	Mounting	Special
Shaft Type	Parallel	Overall Length	13.31 in
Frame Length	6.06 in	Shaft Diameter	0.750 in
Shaft Extension	1.625 in	Torque	250 LB-IN
Outline Drawing	M1030589-M1135109	Connection Drawing	M100512401

This is an uncontrolled document once printed or downloaded and is subject to change without notice. Date Created:04/08/2025

D.C. MOTORS



EXTERNAL CONNECTIONS FOR CW ROTATION
VIEWING LEAD END OF MOTOR WITH RED LEAD
POSITIVE AND BLACK LEAD NEGATIVE (-)
FOR CCW ROTATION REVERSE POLARITY

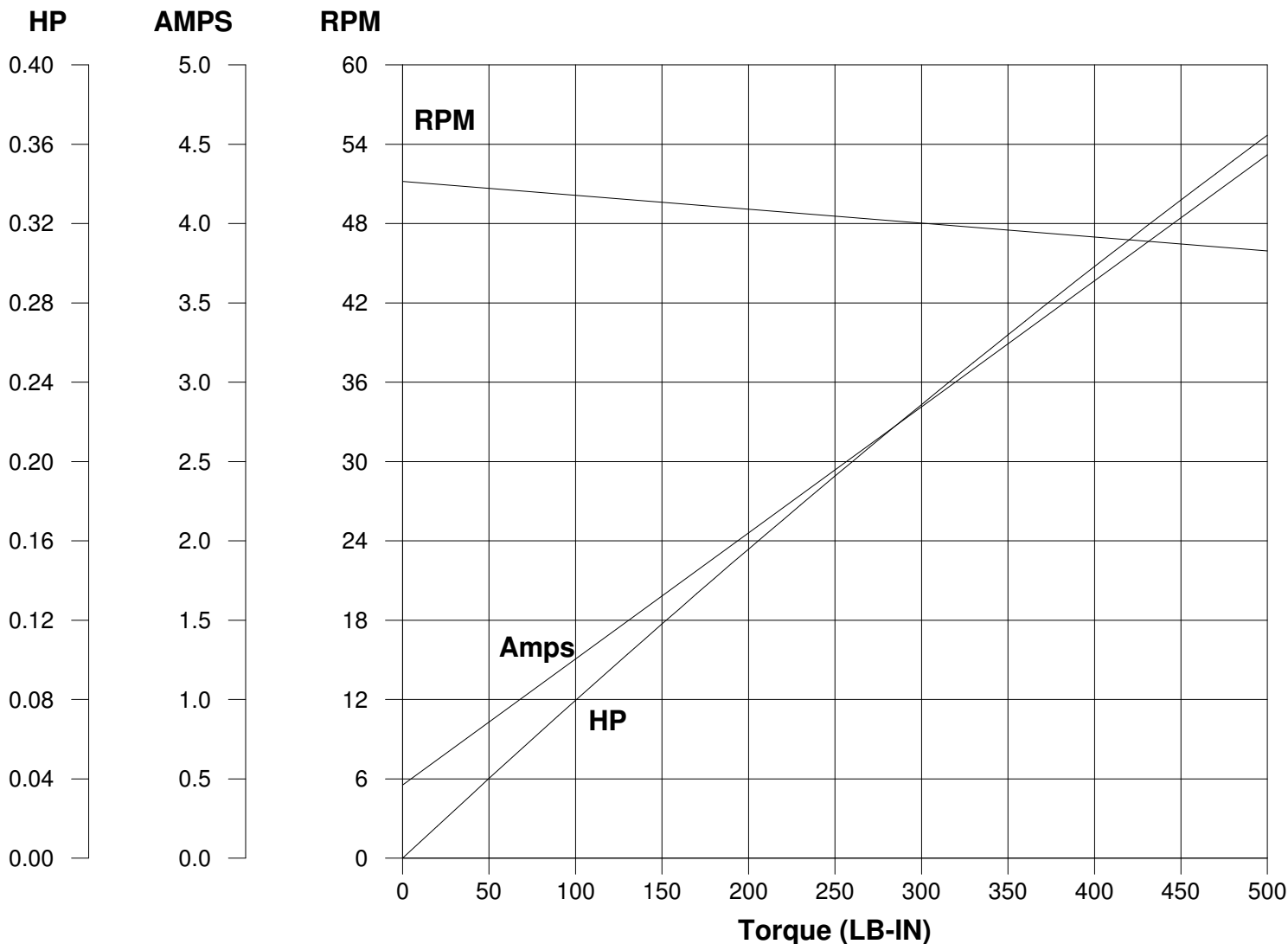
07	CORRECTED "N" & "S", ECR 80000 (PER BC)	VS	8/14/02	BC	TOLERANCES UNLESS SPECIFIED	 ELECTRIC MOTORS GEARMOTORS AND DRIVES	DRAWN	SPV	12/10/91
06	REMOVED GROUND HOLE	TMZ	3/16/95	DEC.	INCHES		CHK	DWF	5/20/92
05	REVERSE ROTATION WAS CW	SPV	6/3/94	.X	±.1		APPD		
04	CHANGED ROTATION FROM CCW TO CW	MJS	3/9/93	.XX	±.01		SCALE	1=1	
03	REVISED ROTATION NOTE	DWF	1/6/93	.XXX	±.005		REF		
02	ADDED GREEN LEAD	DWF	8/1/92	.XXXX	±.0005	MAT'L.	FMF	M9131D2N22	
NO.	REVISION	BY & DATE	CHK	ANG	±1/2"	FINISH	PREV		
THIS DRAWING IN DESIGN AND DETAIL IS OUR PROPERTY AND MUST NOT BE USED EXCEPT IN CONNECTION WITH OUR WORK ALL RIGHTS OF DESIGN AND INVENTION ARE RESERVED THIS IS AN ELECTRONICALLY GENERATED DOCUMENT - DO NOT SCALE THIS PRINT				RFP	CAD FILE	M100512401	SIZE	DRAWING NO.	REV.
				DIST			A	M1005124.01	07

LEESON ELECTRIC CORPORATION

TYPICAL PERFORMANCE CURVE

FOR

DIRECT CURRENT PERMANENT MAGNET MOTOR

Model No. CM34D25NZ54Catalog No. M1135109.00HP 0.250RPM 50DC Volts 90.0N.P. FLA 2.30F.F. 1.38Encl TENVType DNS.F. 1.00Max. Amb. 40.0 Deg CInsul. FFrame 34Duty Cont

Ra 2.0650 Ohms
 La 10.00 mHenrys
 Ja 0.6440 LB-IN²
 Ke 34.50 V/KRPM

Kt 2.916 LB-IN/AMP
 I_{max} 38.4 AMPS Allowed
 FL Torque 250.0 LB-IN
 FL EFF 65.20 %

Winding W- MD342145-1Prepared by V. BoehlenDate 07-18-2005