

PRODUCT INFORMATION PACKET



Model No: M1135117.00
Catalog No: M1135117.00
Parallel Shaft Gearmotor, 0.25 HP, 90 V, 21 RPM, 34 Frame, TENV



Regal and LEESON are trademarks of Regal Rexnord Corporation or one of its affiliated companies.
©2025 Regal Rexnord Corporation, All Rights Reserved. MC017097E





Nameplate Specifications

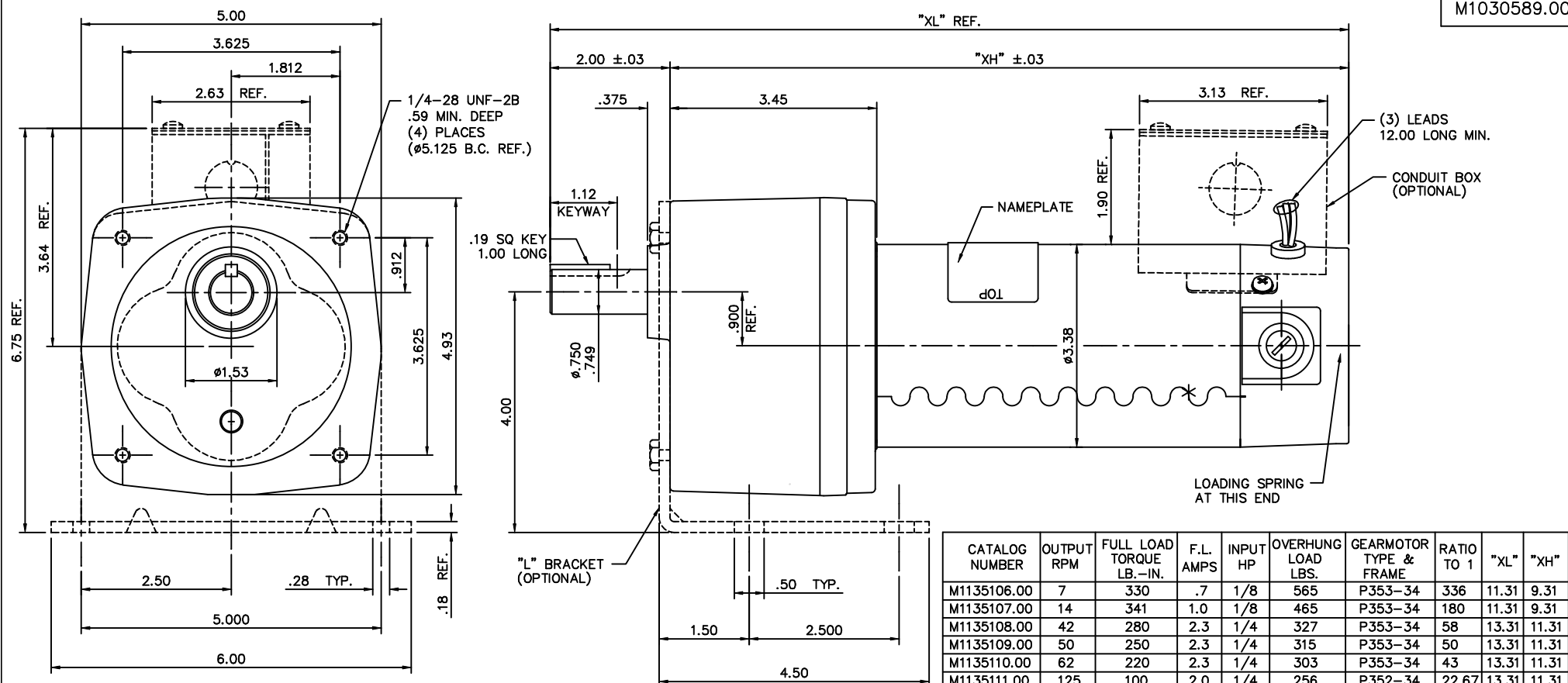
Output HP	0.25 Hp	Output KW	0.19 kW
Voltage	90 V	Speed	21 rpm
Service Factor	1.0	Frame	34
Enclosure	Totally Enclosed Non Ventilating	Thermal Protection	No Protection
Efficiency	59.3 %	Ambient Temperature	40 °C
Current	1.1 A	Duty	Continuous
Insulation Class	F	Drive End Bearing Size	6201
Opp Drive End Bearing Size	608	UL	Recognized
CSA	Y	CE	Y

Technical Specifications


Rotation	Reversible	Mounting	Special
Shaft Type	Parallel	Overall Length	13.31 in
Frame Length	6.06 in	Shaft Diameter	0.750 in
Shaft Extension	1.625 in	Torque	371 LB-IN
Connection Drawing	M100512401	Outline Drawing	M1030589-M1135117

This is an uncontrolled document once printed or downloaded and is subject to change without notice. Date Created:04/08/2025

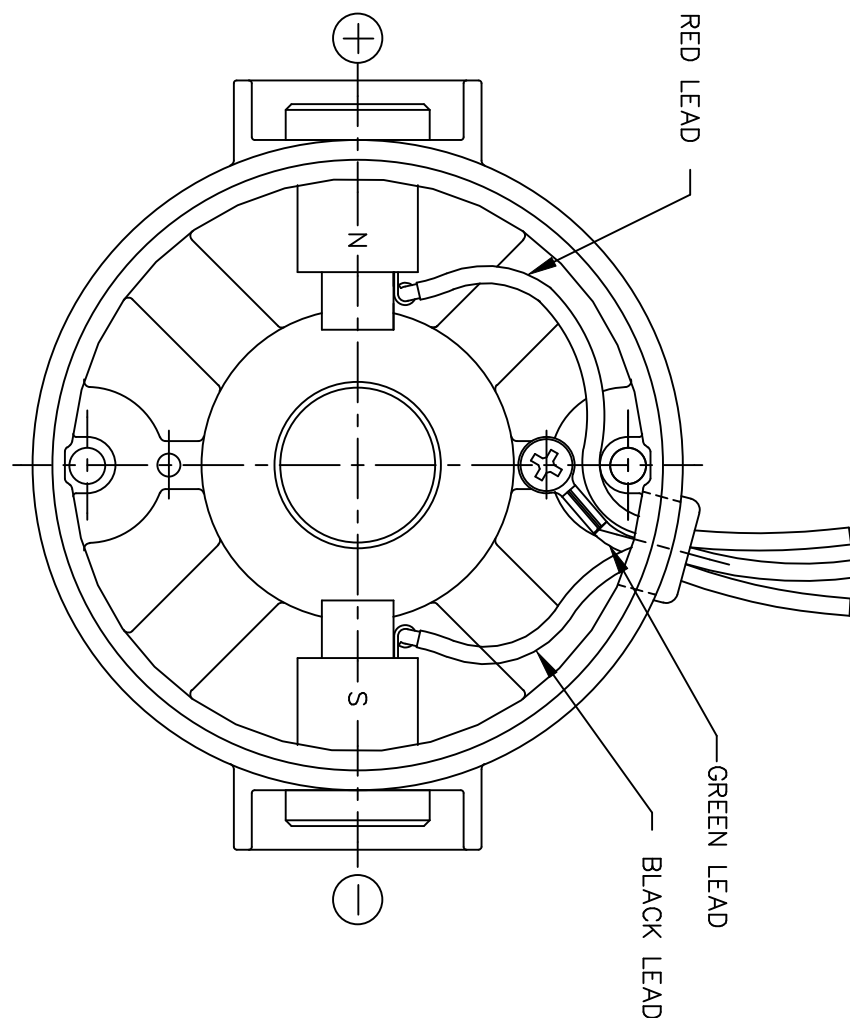
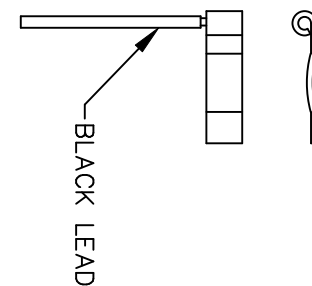
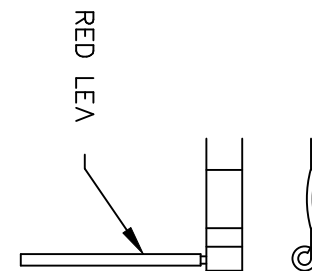
M1030589.00




CATALOG NUMBER	OUTPUT RPM	FULL LOAD TORQUE LB.-IN.	F.L. AMPS	INPUT HP	OVERHUNG LOAD LBS.	GEARMOTOR TYPE & FRAME	RATIO TO 1	"XL"	"XH"
M1135106.00	7	330	.7	1/8	565	P353-34	336	11.31	9.31
M1135107.00	14	341	1.0	1/8	465	P353-34	180	11.31	9.31
M1135108.00	42	280	2.3	1/4	327	P353-34	58	13.31	11.31
M1135109.00	50	250	2.3	1/4	315	P353-34	50	13.31	11.31
M1135110.00	62	220	2.3	1/4	303	P353-34	43	13.31	11.31
M1135111.00	125	100	2.0	1/4	256	P352-34	22.67	13.31	11.31
M1135112.00	165	70	2.0	1/4	232	P352-34	15	13.31	11.31
M1135113.00	500	25	2.0	1/4	194	P352-34	5.44	13.31	11.31
M1135114.00	83	155	2.3	1/4	267	P352-34	29	13.31	11.31
M1135115.00	27	305	1.5	1/4	374	P353-34	91	13.31	11.31
M1135116.00	250	45	2.0	1/4	201	P352-34	10.6	13.31	11.31
M1135117.00	21	371	1.1	1/4	413	P353-34	124	13.31	11.31

						TOLERANCES UNLESS SPECIFIED			ELECTRIC MOTORS GEARMOTORS AND DRIVES	DRAWN	DWF 6/26/97	
						DEC.	INCHES			CHK		
						.X	±.1			APPD		
03	1/4-28 UNF-2B TAPS WERE .63 DEEP PER ECR81849.	RPB 11/24/03	BC	.XX	±.03	TITLE				SCALE	5=8	
02	1.12 KEYWAY WAS 1.03	IPG 11/30/00	SAD	.XXX	±.005	OUTLINE				REF	PR970354	
01	UPDATED TO CATALOG INFORMATION PER KK	CAS 10/31/00	SAD	.XXXX	±.0005	34 FRAME PE350 STOCK - 90 V				FMF	M1135115.00	
NO.	REVISION	BY & DATE	CHK	ANG	±1/2"	FINISH					PREV	
THIS DRAWING IN DESIGN AND DETAIL IS OUR PROPERTY AND MUST NOT BE USED EXCEPT IN CONNECTION WITH OUR WORK. ALL RIGHTS OF DESIGN AND INVENTION ARE RESERVED. THIS IS AN ELECTRONICALLY GENERATED DOCUMENT - DO NOT SCALE THIS PRINT.						RFP	CAD FILE	M1030589	SIZE	DRAWING NO.	REV	
						DIST			B	M1030589.00	03	

D.C. MOTORS



EXTERNAL CONNECTIONS FOR CW ROTATION
VIEWING LEAD END OF MOTOR WITH RED LEAD
POSITIVE AND BLACK LEAD NEGATIVE (-)
FOR CCW ROTATION REVERSE POLARITY

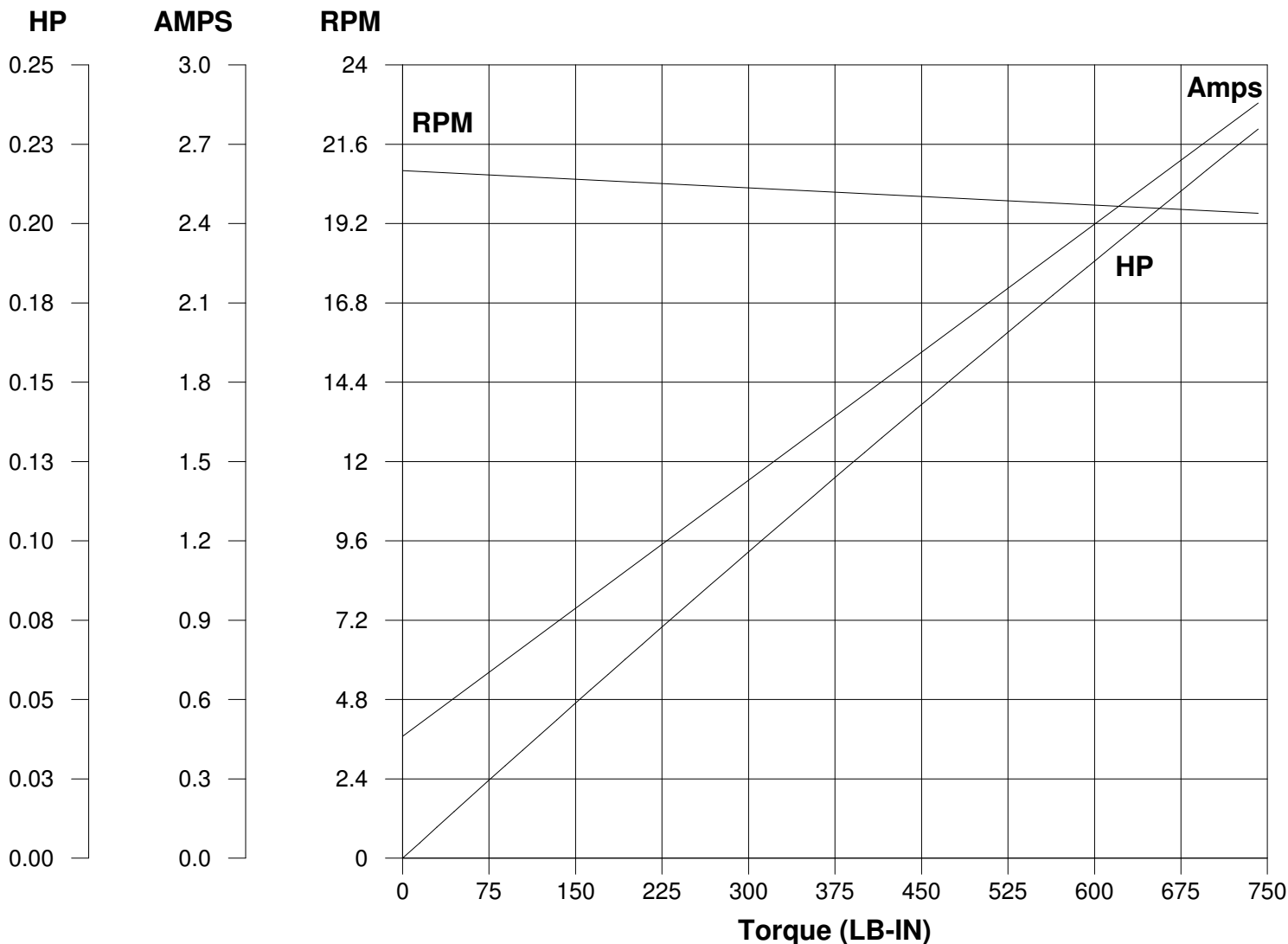
07	CORRECTED "N" & "S", ECR 80000 (PER BC)	VS	8/14/02	BC	TOLERANCES UNLESS SPECIFIED	 ELECTRIC MOTORS GEARMOTORS AND DRIVES	DRAWN	SPV	12/10/91
06	REMOVED GROUND HOLE	TMZ	3/16/95	DEC.	INCHES		CHK	DWF	5/20/92
05	REVERSE ROTATION WAS CW	SPV	6/3/94	.X	±.1		APPD		
04	CHANGED ROTATION FROM CCW TO CW	MJS	3/9/93	.XX	±.01		SCALE	1=1	
03	REVISED ROTATION NOTE	DWF	1/6/93	.XXX	±.005		REF		
02	ADDED GREEN LEAD	DWF	8/1/92	.XXXX	±.0005	MAT'L.	FMF	M9131D2N22	
NO.	REVISION	BY & DATE	CHK	ANG	±1/2"	FINISH	PREV		
THIS DRAWING IN DESIGN AND DETAIL IS OUR PROPERTY AND MUST NOT BE USED EXCEPT IN CONNECTION WITH OUR WORK ALL RIGHTS OF DESIGN AND INVENTION ARE RESERVED THIS IS AN ELECTRONICALLY GENERATED DOCUMENT - DO NOT SCALE THIS PRINT				RFP	CAD FILE	M100512401	SIZE	DRAWING NO.	REV.
				DIST			A	M1005124.01	07

LEESON ELECTRIC CORPORATION

TYPICAL PERFORMANCE CURVE

FOR

DIRECT CURRENT PERMANENT MAGNET MOTOR

Model No. CM34D25NZ52Catalog No. M1135117.00HP 0.250RPM 21DC Volts 90.0N.P. FLA 1.10F.F. 1.38Encl TENVType DNS.F. 1.00Max. Amb. 40.0 Deg CInsul. HFrame 34Duty Cont

Ra 2.0650 Ohms
 La 10.00 mHenrys
 Ja 0.6440 LB-IN²
 Ke 34.50 V/KRPM

Kt 2.916 LB-IN/AMP
 Imax 38.4 AMPS Allowed
 FL Torque 371.0 LB-IN
 FL EFF 59.30 %

Winding W- MD342145-1Prepared by V. BoehlenDate 07-01-2005