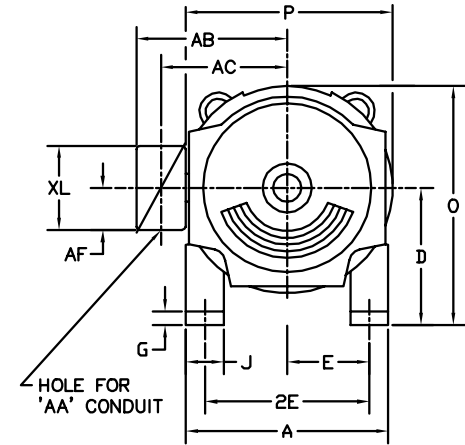
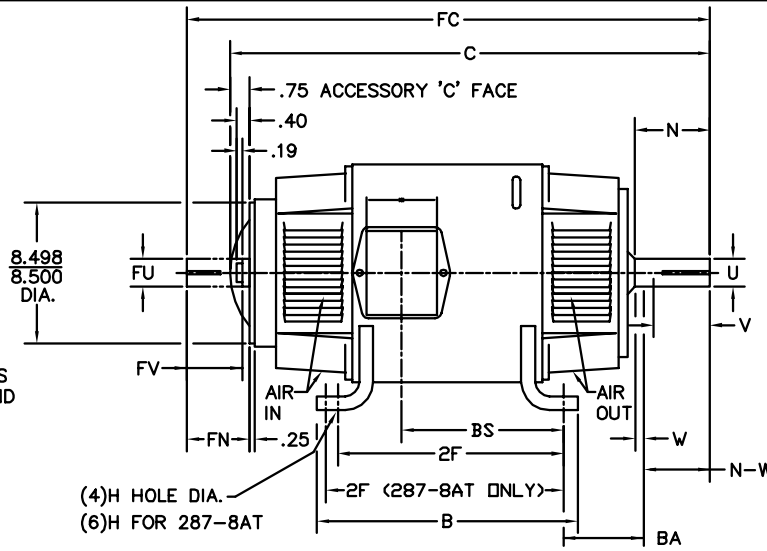
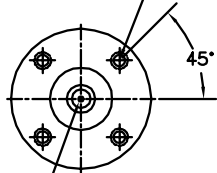


1/2-13UNC-2B THD X 1.00 DEEP
4-HOLES EQUALLY SPACED
ON A 7.250 DIA. B.C.



FRAME	FOOT MOUNTING							D.E. SHAFT EXTENSION					DRIVE KEY		ACC SHAFT EXTENSION			ACC KEY		FRAME						
	BA	E	2F	G	H	J	N	N-W	U	V	W	KEY-SQ.	KEY-LONG	FN	FU	FV	KEY-SQ.	KEY-LONG	A	B	C	FC	D	O	P	
287AT	4.75	5.50	12.50	.69	.531	2.50	3.91	3.75	1.875	3.50 ³	.16	.500	2.50	3.44	1.625	3.19	.375	2.44	13.81	14.13	31.00	33.71	7.00 ²	13.88	13.75	
287-8AT	4.75	5.50	12.50 & 14.00	.69	.531	2.50	3.91	3.75	1.875	3.50 ³	.16	.500	2.50	3.44	1.625	3.19	.375	2.44	13.81	15.62	31.00	33.71	7.00 ²	13.88	13.75	
288AT	4.75	5.50	14.00	.69	.531	2.50	3.91	3.75	1.875	3.50 ³	.16	.500	2.50	3.44	1.625	3.19	.375	2.44	13.81	15.62	32.75	35.46	7.00 ²	13.88	13.75	
2810AT	4.75	5.50	18.00	.69	.531	2.50	3.91	3.75	1.875	3.50 ³	.16	.500	2.50	3.44	1.625	3.19	.375	2.44	13.81	19.62	36.75	39.46	7.00 ²	13.88	13.75	
2811AT	4.75	5.50	20.00	.69	.531	2.50	3.91	3.75	1.875	3.50 ³	.16	.500	2.50	3.44	1.625	3.19	.375	2.44	13.81	21.62	40.68	43.84	7.00 ²	13.88	13.75	
2813AT	4.75	5.50	25.00	.69	.531	2.50	3.91	3.75	1.875	3.50 ³	.16	.500	2.50	3.44	1.625	3.19	.375	2.44	13.81	26.62	44.62	47.84	7.00 ²	13.88	13.75	

FRAME	CONDUIT BOX							ARM APPROX. WK ² LBS.FT. ²	APPROXIMATE WEIGHT
	AA	AB	AC	AF	BS	XL	XN		
287AT	1 1/4	11.88	9.25	5.00	10.89	7.88	5.25	4.67	506 ⁵
287-8AT	1 1/4	11.88	9.25	5.00	10.89	7.88	5.25	4.67	506 ⁵
288AT	1 1/4	11.88	9.25	5.00	12.64	7.88	5.25	5.36	566 ⁵
2810AT	1 1/4	11.88	9.25	5.00	16.64	7.88	5.25	6.80	726 ⁵
2811AT	1 1/4	11.88	9.25	5.00	19.14	7.88	5.25	7.62	751 ⁵
2813AT	1 1/4	11.88	9.25	5.00	23.64	7.88	5.25	9.40	796 ⁵

- 1) SHAFT DIAMETERS TO 1.500 TOLERANCE +.0000 - .0005
SHAFT DIAMETERS ABOVE 1.500 TOLERANCE +.0000 - .0010
SHAFT DIAMETERS TO 1.625 RUNOUT .002 T.I.R. MAX.
SHAFT DIAMETERS ABOVE 1.625 RUNOUT .003 T.I.R. MAX.
- 2) 'D' DIMENSION TOLERANCE +.000 - .060
- 3) 'V' DIMENSION IS MAX. HUB LENGTH ON SHAFT
- 4) CONDUIT BOX CAN BE ROTATED IN 90° STEPS ON ITS OWN AXIS.
- 5) TOTAL WEIGHT OF MOTOR.
- 6) ALL DIMENSIONS NOT NOTED ARE NOMINAL DIMENSIONS CONSULT FACTORY FOR TOLERANCES.

FOR F1 OR F2 CONDUIT BOX
LOCATION SEE SALES ORDER

CUSTOMER IS RESPONSIBLE FOR DETERMINING THAT BALDOR'S PRODUCT WILL PERFORM SUITABLY IN THE INTENDED APPLICATION.

REV. DESC: CHANGE TO LAB OFFICE 015		
REV. LTR: G	VERSION: 05	TDR: 00000951746
FILE: \RSN\00031\749	REVISED: 04:29:16 11/03/2015	BY: USPABLO
MTL: -		

BALDOR

DIM SHEET 287AT-2813AT,DPFG

SH 1 of 1