

Coupling Type EB (Exposed Bolts) Part Numbers

Coupling Size	Full Flex Coupling			Fastener Set (Includes Gasket)		Sleeve		Flex Hub		
	No Bore Part No.	Wt.	Finish Bore ^① Part No.	Part No.	Wt.	Part No.	Wt.	No Bore Part No.	Wt.	Finish Bore ^① Part No.
1 1/2	1 1/2F EB FF	19	1 1/2F EB FF FB	1 1/2 EB FS	1	1 1/2F EB SLEEVE	6	1 1/2F FHUB	3	1 1/2F FHUB FB
2	2F EB FF	30	2F EB FF FB	2 EB FS	1	2F EB SLEEVE	8	2F FHUB	7	2F FHUB FB
2 1/2	2 1/2F EB FF	52	2 1/2F EB FF FB	2 1/2 EB FS	2	2 1/2F EB SLEEVE	14	2 1/2F FHUB	12	2 1/2F FHUB FB
3	3F EB FF	76	3F EB FF FB	3 EB FS	3	3F EB SLEEVE	17	3F FHUB	20	3F FHUB FB
3 1/2	3 1/2F EB FF	117	3 1/2F EB FF FB	3 1/2 EB FS	5	3 1/2F EB SLEEVE	28	3 1/2F FHUB	28	3 1/2F FHUB FB
4	4F EB FF	180	4F EB FF FB	4 EB FS	5	4F EB SLEEVE	41	4F FHUB	47	4F FHUB FB
4 1/2	4 1/2F EB FF	244	4 1/2F EB FF FB	4 1/2 EB FS	7	4 1/2F EB SLEEVE	53	4 1/2F FHUB	66	4 1/2F FHUB FB
5	5F EB FF	361	5F EB FF FB	5 EB FS	9	5F EB SLEEVE	80	5F FHUB	96	5F FHUB FB
5 1/2	5 1/2F EB FF	422	5 1/2F EB FF FB	5 1/2 EB FS	14	5 1/2F EB SLEEVE	89	5 1/2F FHUB	115	5 1/2F FHUB
6	6F EB FF	494	6F EB FF FB	6 EB FS	14	6F EB SLEEVE	100	6F FHUB	140	6F FHUB
7	7F EB FF	822	7F EB FF FB	7 EB FS	22	7F EB SLEEVE	160	7F FHUB	240	7F FHUB

① All finish bores and keyways per AGMA/ANSI 9112 commercial standard tolerances with interference fit bores. Clearance fit bores are available on request and include one setscrew over keyway.

Coupling Type SB (Shrouded Bolts) Part Numbers

Coupling Size	Full Flex Coupling			Fastener Set (Includes Gasket)		Sleeve		Flex Hub		
	No Bore Part No.	Wt.	Finish Bore ^① Part No.	Part No.	Wt.	Part No.	Wt.	No Bore Part No.	Wt.	Finish Bore ^① Part No.
1 1/2	1 1/2F SB FF	19	1 1/2F SB FF FB	1 1/2 SB FS	1	1 1/2F SB SLEEVE	6	1 1/2F FHUB	3	1 1/2F FHUB FB
2	2F SB FF	30	2F SB FF FB	2 SB FS	1	2F SB SLEEVE	8	2F FHUB	7	2F FHUB FB
2 1/2	2 1/2F SB FF	52	2 1/2F SB FF FB	2 1/2 SB FS	2	2 1/2F SB SLEEVE	13	2 1/2F FHUB	12	2 1/2F FHUB FB
3	3F SB FF	76	3F SB FF FB	3 SB FS	2	3F SB SLEEVE	15	3F FHUB	20	3F FHUB FB
3 1/2	3 1/2F SB FF	117	3 1/2F SB FF FB	3 1/2 SB FS	4	3 1/2F SB SLEEVE	26	3 1/2F FHUB	28	3 1/2F FHUB FB
4	4F SB FF	180	4F SB FF FB	4 SB FS	4	4F SB SLEEVE	37	4F FHUB	47	4F FHUB FB
4 1/2	4 1/2F SB FF	244	4 1/2F SB FF FB	4 1/2 SB FS	4	4 1/2F SB SLEEVE	50	4 1/2F FHUB	66	4 1/2F FHUB FB
5	5F SB FF	361	5F SB FF FB	5 SB FS	7	5F SB SLEEVE	72	5F FHUB	96	5F FHUB FB

① All finish bores and keyways per AGMA/ANSI 9112 commercial standard tolerances with interference fit bores. Clearance fit bores are available on request and include one setscrew over keyway.

Coupling Type (Exposed Bolts) Part Numbers

Coupling Size	Full Flex	Male Half w/Access	Female Half w/Access	Hub	Male Sleeve	Female Sleeve	End Ring	Center Flange Fastener Set (includes gasket)	End Ring Fastener Set (includes gasket)
8	8F EB FF	8F EB MH	8F EB FH	8F FHUB	8F EB MSLEEVE	8F EB FSLEEVE	8F ERING	8 EB FS	8 ERFS
9	9F EB FF	9F EB MH	9F EB FH	9F FHUB	9F EB MSLEEVE	9F EB FSLEEVE	9F ERING	9 EB FS	9 ERFS
10	10F EB FF	10F EB MH	10F EB FH	10F FHUB	10F EB MSLEEVE	10F EB FSLEEVE	10F ERING	10 EB FS	10 ERFS
11	11F EB FF	11F EB MH	11F EB FH	11F FHUB	11F EB MSLEEVE	11F EB FSLEEVE	11F ERING	11 EB FS	11 ERFS
12	12F EB FF	12F EB MH	12F EB FH	12F FHUB	12F EB MSLEEVE	12F EB FSLEEVE	12F ERING	12 EB FS	12 ERFS
13	13F EB FF	13F EB MH	13F EB FH	13F FHUB	13F EB MSLEEVE	13F EB FSLEEVE	13F ERING	13 EB FS	13 ERFS
14	14F EB FF	14F EB MH	14F EB FH	14F FHUB	14F EB MSLEEVE	14F EB FSLEEVE	14F ERING	14 EB FS	14 ERFS
15	15F EB FF	15F EB MH	15F EB FH	15F FHUB	15F EB MSLEEVE	15F EB FSLEEVE	15F ERING	15 EB FS	15 ERFS
16	16F EB FF	16F EB MH	16F EB FH	16F FHUB	16F EB MSLEEVE	16F EB FSLEEVE	16F ERING	16 EB FS	16 ERFS
18	18F EB FF	18F EB MH	18F EB FH	18F FHUB	18F EB MSLEEVE	18F EB FSLEEVE	18F ERING	18 EB FS	18 ERFS
20	20F EB FF	20F EB MH	20F EB FH	20F FHUB	20F EB MSLEEVE	20F EB FSLEEVE	20F ERING	20 EB FS	20 ERFS
22	22F EB FF	22F EB MH	22F EB FH	22F FHUB	22F EB MSLEEVE	22F EB FSLEEVE	22F ERING	22 EB FS	22 ERFS
24	24F EB FF	24F EB MH	24F EB FH	24F FHUB	24F EB MSLEEVE	24F EB FSLEEVE	24F ERING	24 EB FS	24 ERFS
26	26F EB FF	26F EB MH	26F EB FH	26F FHUB	26F EB MSLEEVE	26F EB FSLEEVE	26F ERING	26 EB FS	26 ERFS
28	28F EB FF	28F EB MH	28F EB FH	28F FHUB	28F EB MSLEEVE	28F EB FSLEEVE	28F ERING	28 EB FS	28 ERFS
30	30F EB FF	30F EB MH	30F EB FH	30F FHUB	30F EB MSLEEVE	30F EB FSLEEVE	30F ERING	30 EB FS	30 ERFS

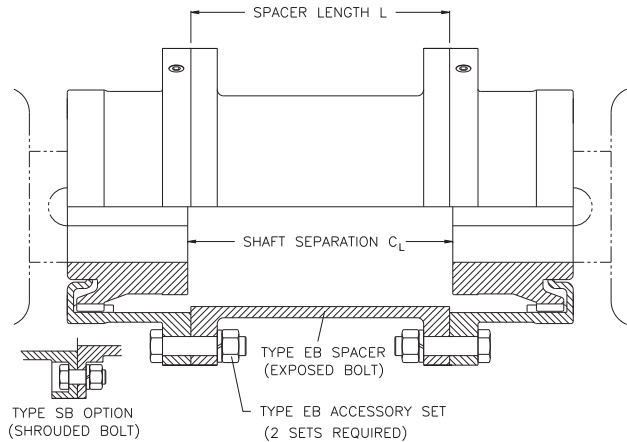
Standard Spacer Couplings

Full-flex spacer couplings are used for 4 bearing installations with extended shaft separations. Tabulated below are spacers for industry standard shaft separations, C_L .

Type EB exposed bolt spacers and Type SB shrouded bolt spacers for standard shaft separations are normally in stock. Other lengths are manufactured to order.

Spacer length, L , is calculated by subtracting the standard full-flex, close coupled gap, C , from the shaft separation, C_L .

$$L = C_L - C \quad (\text{full-flex, close coupled})$$



Spacer Part Numbers

Stock Spacer Part Numbers

Type SB (Shrouded Bolts)

Coupling Size	Shaft Separation							
	3 1/2"		4 3/8"		5"		7"	
	Part No.	Wt.	Part No.	Wt.	Part No.	Wt.	Part No.	Wt.
1 1/2	1 1/2 SB SPR350	6	1 1/2 SB SPR438	7	1 1/2 SB SPR500	8		
2	2 SB SPR350	8	2 SB SPR438	9	2 SB SPR500	10	2 SB SPR700	12
2 1/2					2 1/2 SB SPR500	14	2 1/2 SB SPR700	17
3					3 SB SPR500	17	3 SB SPR700	20
3 1/2					3 1/2 SB SPR500	27		

Note: Spacer part number references the shaft separation, not the actual length of the spacer.

Stock Spacer Part Numbers

Type EB (Exposed Bolts)

Coupling Size	Shaft Separation			
	5"		7"	
	Part No.	Wt.	Part No.	Wt.
1 1/2	1 1/2 EB SPR500	8		
2	2 EB SPR500	10	2 EB SPR700	12
2 1/2	2 1/2 EB SPR500	14		
3	3 EB SPR500	17		

LEF Spacer Couplings

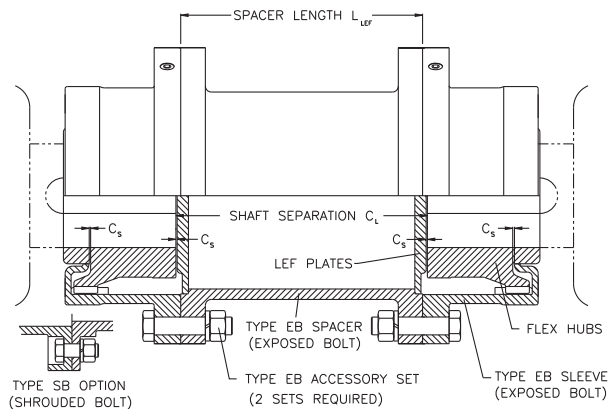
Limited End Float (LEF) spacer couplings are used for sleeve bearing motor applications with extended shaft separations. LEF spacers are supplied with steel LEF plates installed in each end.

Spacer length, L_{LEF} , is calculated by subtracting the LEF full-flex, close coupled gap, C_{LEF} , from the shaft separation, C_L .

$$L_{LEF} = C_L - C_{LEF} \quad (\text{full-flex, close coupled})$$

LEF spacers are shorter than standard spacers for a given shaft separation, and are manufactured to order.

Note: Refer to Form 1900-62 for more information on limited end float applications. Please refer to page 107 for C_s and C_{LEF} dimensions.



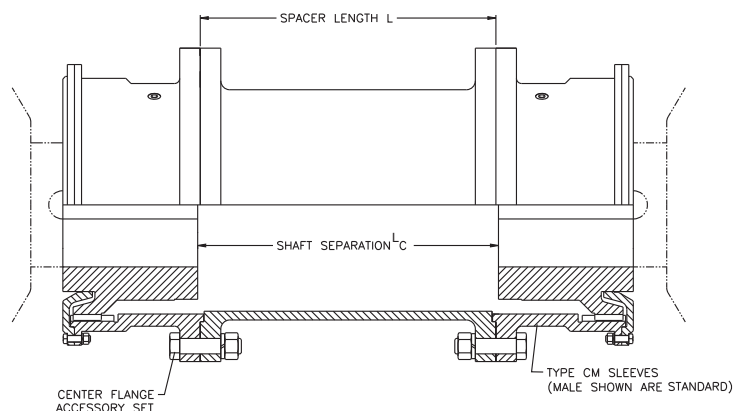
Couplings sizes 8 - 30 are also available as spacer couplings for extended shaft separations. These sizes are available in exposed bolt only.

Spacers for coupling sizes 4 - 30 are non-stock and are manufactured to order. LEF spacer couplings are also manufactured to order.

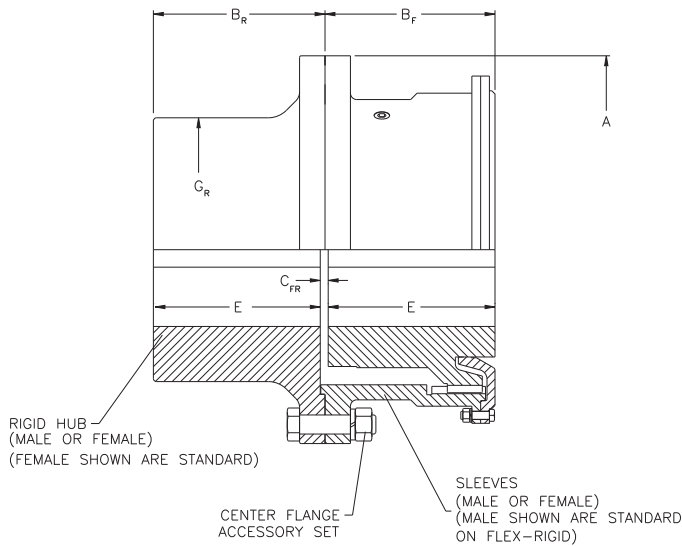
Coupling Greases

KOP-FLEX offers greases specifically designed for use in coupling applications. For proper lubrication and long service life, use KSG Standard Coupling Grease, or KHP High Performance Coupling Grease. See pages 170-172 for detailed specifications.

Spacer Couplings Size 8-30



Flex Rigid and Floating Shaft Couplings Size 8 - 30



Coupling Type EB (Exposed Bolts) Part Numbers

Coupling Size	Flex Rigid w/Access	Male Rigid	Female Rigid
8	8F EB FR	8F EB MRHUB	8F EB FRHUB
9	9F EB FR	9F EB MRHUB	9F EB FRHUB
10	10F EB FR	10F EB MRHUB	10F EB FRHUB
11	11F EB FR	11F EB MRHUB	11F EB FRHUB
12	12F EB FR	12F EB MRHUB	12F EB FRHUB
13	13F EB FR	13F EB MRHUB	13F EB FRHUB
14	14F EB FR	14F EB MRHUB	14F EB FRHUB
15	15F EB FR	15F EB MRHUB	15F EB FRHUB
16	16F EB FR	16F EB MRHUB	16F EB FRHUB
18	18F EB FR	18F EB MRHUB	18F EB FRHUB
20	20F EB FR	20F EB MRHUB	20F EB FRHUB
22	22F EB FR	22F EB MRHUB	22F EB FRHUB
24	24F EB FR	24F EB MRHUB	24F EB FRHUB
26	26F EB FR	26F EB MRHUB	26F EB FRHUB
28	28F EB FR	28F EB MRHUB	28F EB FRHUB
30	30F EB FR	30F EB MRHUB	30F EB FRHUB

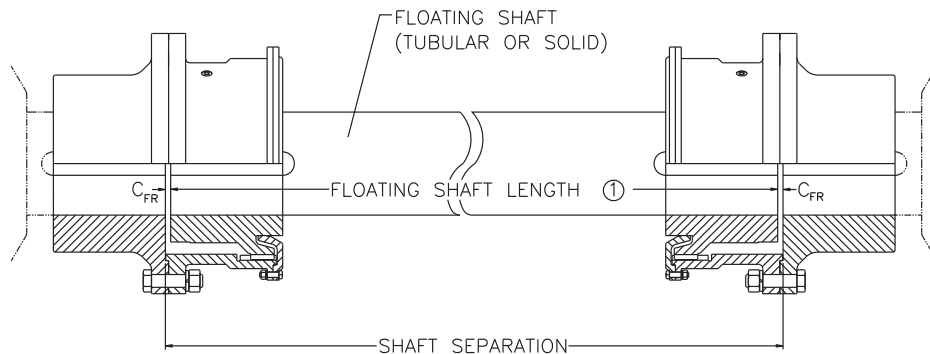
Coupling Size	Maximum Bore with Standard Key		Rating HP / 100 RPM	Torque Rating (lb.-in. x 1000)	Peak Torque Rating (lb.-in. x 1000)	Maximum Speed (RPM)	Weight with Solid Hubs (lb.)	Dimensions					
	Flex	Rigid						A	B _F	B _R	C _{FR}	E	G _R
8	8 3/4	11	2230	1404	2808	1750	1306	23 1/4	10	10 1/8	1/2	9 13/16	15 1/4
9	9 3/4	12 3/4	3170	1995	3990	1625	1795	26	11 1/8	11 3/16	9/16	10 7/8	17 1/4
10	11	13 1/2	4350	2744	5488	1500	2404	28	12 1/4	12 3/8	5/8	12	19
11	12	15	5780	3645	7290	1375	3151	30 1/2	13 3/8	13 1/2	5/8	13 1/8	20 3/4
12	13	16 1/4	7190	4532	9064	1250	3947	33	14 1/8	14 1/4	5/8	13 7/8	22 5/8
13	14 1/4	18	9030	5688	11376	1125	4866	35 3/4	15	15	3/4	14 5/8	24 5/8
14	15 1/2	19	11080	6982	13964	1000	5800	38	15 7/8	15 7/8	3/4	15 1/2	26 1/4
15	17	20 1/2	13470	8488	16976	875	7155	40 1/2	16 7/8	16 7/8	3/4	16 1/2	28
16	18	22	16100	10150	20300	750	8430	43	17 7/8	17 7/8	1	17 3/8	29 3/4
18	20 1/2	25	21100	13300	26600	500	11130	47 1/4	18 1/2	18 1/2	1	18	34
20	23	26	28800	18144	36288	400	15625	53 1/2	21 5/8	21 5/8	1	21 1/8	36
22	26	27	38100	24009	48018	300	20065	59	23 1/2	23 5/8	1 1/8	23	38
24	28	28	42400	26699	53398	200	25450	64 1/4	25 1/4	25 3/8	1 1/8	24 3/4	40
26	30	29	53000	33415	66830	200	31100	68 1/2	27	27 1/8	1 1/8	26 1/2	42
28	33	30	65900	41564	83128	200	36550	73 3/4	27 5/8	27 3/4	1 1/8	27 1/8	44
30	36	36	80300	50614	101228	200	43780	78	28 1/8	28 1/4	1 1/8	27 5/8	50

NOTE: Couplings are only available with exposed bolts.

① Floating shaft length is equal to the shaft separation, minus 2 times the CFR dimension.

② Max. speed is based on flange stress limits and does not consider lateral critical speed considerations for floating shaft applications.

FLOATING SHAFT ASSEMBLY



Ordering Instructions: When ordering floating shaft couplings, be sure to include hp and rpm, shaft separation, and equipment shaft sizes. Applications with very large shaft separations and/or high speeds may require tubular floating shafts due to lateral critical speed concerns.

Important: Care must be exercised in proper selection of any shaft coupling. The Users must assure themselves that the design of the shaft to coupling hub connection is adequate for the duty intended.