

FEATURES

Shaft mounted

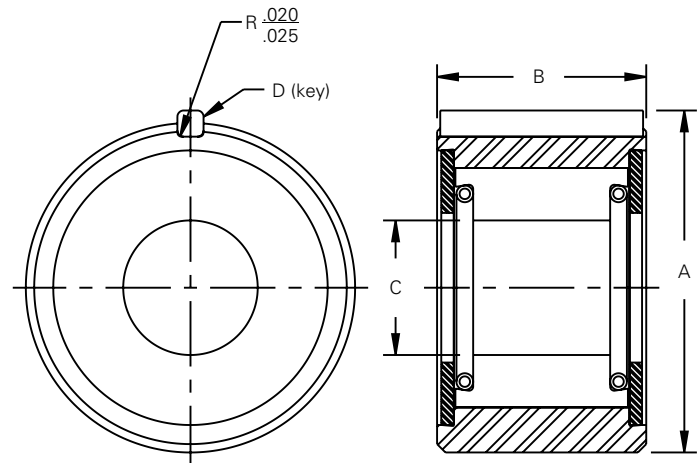
- Primarily backstop applications, may also be used in indexing and overrunning applications
- For freewheeling applications, the shaft that the clutch is mounted on should be the overrunning member
- Clutches require bearing support to ensure concentricity between inner and outer races. Taper on this shaft should not exceed .0002 inches per inch.
- No inner race (shaft is used as inner race)

INDUSTRIES SERVED

- Fitness
- Food processing
- Textile

FIELD APPLICATIONS

- Gearbox manufacturing
- Winches, hoists
- Industrial transmissions
- Pumps
- Shaft mount reducers
- Textile drives

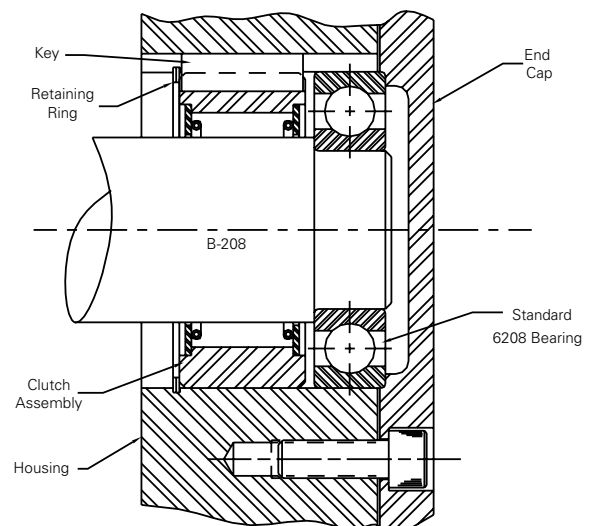
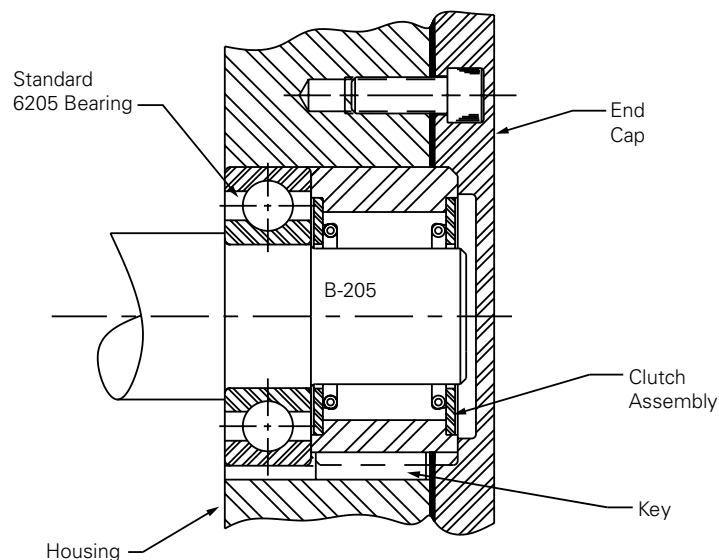


Mounting Data

*Shaft (not included) - harden to obtain RC 58-62 and .050 - .060 case depth after grinding. Concentricity between shaft and housing bore should not exceed .002" T.I.R.

MODEL NUMBER	C (SHAFT DIAMETER)		D (KEY SIZE) WITH KEY	USE WITH BEARING NUMBER	WEIGHT	
	INCHES	MM			LB	KG
B203A	.649 / .650	16.48 / 16.51	0.125 x 0.06	203	0.50	22.7
B204A	.739 / .740	18.77 / 18.80	0.19 x 0.09	204	0.75	34.0
B205A	.929 / .930	23.60 / 23.62	0.19 x 0.09	205	0.75	34.0
B206A	1.289 / 1.290	32.74 / 32.77	0.25 x 0.13	206	1.00	0.5
B207A	1.656 / 1.657	42.06 / 42.09	0.25 x 0.13	207	1.25	0.6
B208A	1.840 / 1.841	46.74 / 46.76	0.38 x 0.19	208	1.75	0.8
B210A	2.208 / 2.209	56.08 / 56.11	0.38 x 0.19	210	2.00	0.9

Key furnished with each clutch.



FEATURES

- Dimensionally interchangeable with competitor's series
- Precision formed and honed cams provide extended wear life
- Versatile, compact design adaptable to numerous industrial applications

INDUSTRIES SERVED

- Fitness
- Food processing
- Textile

FIELD APPLICATIONS

- Gearbox manufacturing
- Winches and hoists
- Industrial transmissions
- Pumps
- Shaft mount reducers
- Textile drives



MODEL NUMBER	TORQUE RATING		MAX. TORQUE CAPACITY		SHAFT OVERRUN RPM (MAX)	DIMENSIONS	
						A (OVERALL DIAMETER)	
	LB - FT	N-M	LB - FT	N-M		IN	MM
B501A	60	81	102	138	2500	1.5735 / 1.5745	39.967 / 39.992
B502	60	81	102	138	2500	1.8480 / 1.8490	46.939 / 46.965
B506	160	217	272	369	2000	2.4385 / 2.4395	61.938 / 61.963
B507A	160	217	272	369	2000	2.4385 / 2.4395	61.938 / 61.963
B509A	250	339	425	576	2000	2.8322 / 2.8332	71.938 / 71.963
B510A	250	339	425	576	2000	3.1470 / 3.1485	79.934 / 79.972
B511A	525	712	892	1209	2000	3.1480 / 3.1490	79.959 / 79.985
B512A	650	881	1,105	1498	2000	3.5410 / 3.5420	89.941 / 89.967
B513	1,250	1,695	2,125	2881	1800	4.7490 / 4.7500	120.625 / 120.650

* Torque rating is based on 10⁶ load cycles fatigue life. Maximum capacity is based on 10⁵ load cycles fatigue life.

Lubrication

B500 series clutches are furnished prelubricated with a light grease. In service they may be either oil or grease lubricated. Lubrications containing EP additives should be avoided.

