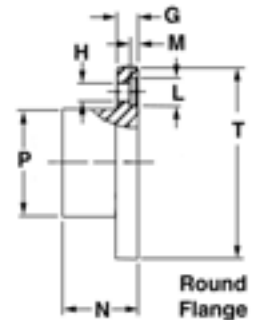
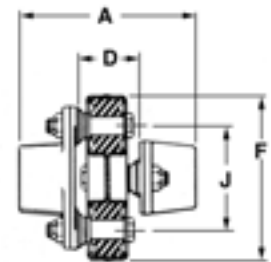
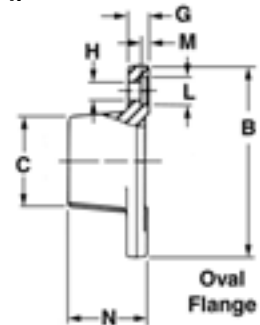



Round Flange

Oval Flange

Catalog No.	Capacity		Max. RPM	Working Angle	Parallel Misalign.	Stock Min. Plain Bores	Maximum Bore w/Std. KW		Approx. Weight of Coupling
	HP per 100 RPM	Torque lb. ft.					w/22 Over KW	w/SS at 180°	
252-O	.25	13	6500	1.5°	.010	3/8	9/16	3/4	3/4
302-O	.38	20	6000	2°	.010	3/8	11/16	7/8	1 1/4
352-O	.60	32	5500	3°	.015	3/8	7/8	1	2
402-R	1.00	53	5500	4°	.015	1/2	1	1 1/4	4
502-R	1.60	84	5300	5°	.020	1/2	1 1/4	1 1/2	7
602-R	3.25	171	5000	5°	.030	3/4	1 5/8	1 3/4	12
702-R	5.40	284	4600	5°	.035	7/8	1 3/4	2 1/8	20
802-R	7.40	389	4400	5°	.040	1	2 1/4	2 1/2	30
902-R	10.00	525	4200	4°	.040	1	2 3/8	2 3/4	48
1002-R	13.80	725	4000	4°	.045	1 1/4	2 3/4	3 1/4	67
1202-R	21.10	1110	3800	2°	.050	2	3	3 1/2	106



Catalog No.	Stock Finished Bores marked "X"																			
	1/2	5/8	3/4	7/8	1	1 1/8	1 3/16	1 1/4	1 3/8	1 7/16	1 1/2	1 5/8	1 3/4	1 7/8	1 15/16	2	2 1/8	2 3/8	2 5/8	2 7/8
252-O	x	x	x	-	-	-	-	-	-	-	-	-	-	-	-	-	-	-	-	-
302-O	x	x	x	x	-	-	-	-	-	-	-	-	-	-	-	-	-	-	-	-
352-O	-	x	x	x	x	-	-	-	-	-	-	-	-	-	-	-	-	-	-	-
402-R	-	-	x	x	x	x	-	-	-	-	-	-	-	-	-	-	-	-	-	-
502-R	-	-	-	x	x	x	x	x	x	-	-	-	-	-	-	-	-	-	-	-
602-R	-	-	-	-	x	-	x	x	x	x	x	-	-	-	-	-	-	-	-	-
702-R	-	-	-	-	-	-	x	x	x	x	x	x	x	x	-	-	-	-	-	-
802-R	-	-	-	-	-	-	-	-	-	-	x	x	x	-	x	x	-	-	-	-
902-R	-	-	-	-	-	-	-	-	-	-	-	-	x	-	x	x	x	x	-	-
1002-R	-	-	-	-	-	-	-	-	-	-	-	-	-	-	-	-	-	x	x	x
1202-R	-	-	-	-	-	-	-	-	-	-	-	-	-	-	-	-	-	-	-	-

Dimensions

Size	A	B	C	D	F	G	H	J	L		M	N	P	T	
									Min.	Max.				Min.	Max.
252	2 1/4	2 1/4	15/16	3/4	2 5/8	5/32	1/4	1 5/8	-	-	-	3/4	-	-	-
302	2 3/4	2 9/16	1 3/16	1	3 1/8	3/16	1/4	1 15/16	-	-	-	7/8	-	-	-
352	3 1/8	3	1 3/8	1 1/8	3 5/8	1/4	5/16	2 1/4	-	-	-	1	-	-	-
402	4 1/8	3 5/8	1 1/2	1 5/8	4 1/8	3/8	25/64	2 9/16	.625	.627	7/32	1 1/4	1 3/4	3.563	3.573
502	4 7/8	4 3/8	1 7/8	1 7/8	5 1/16	3/8	29/64	3 3/16	.750	.752	3/16	1 1/2	2 1/4	4.190	4.200
602	6 3/8	5 1/4	2 5/16	2 1/4	6 1/16	1/2	33/64	3 13/16	.750	.752	3/16	2 1/16	2 3/4	5.063	5.073
702	7 5/16	5 7/8	2 3/4	2 7/16	7	5/8	37/64	4 5/16	.875	.877	3/16	2 7/16	3 1/8	5.813	5.823
802	8 1/4	6 5/8	3 3/16	2 11/16	8	5/8	37/64	4 15/16	.875	.877	3/16	2 25/32	3 3/4	6.563	6.573
902	9 3/4	7 5/8	3 1/2	3	9	3/4	21/32	5 9/16	1.125	1.127	7/32	3 3/8	4 1/4	7.563	7.573
1002	11	8 1/2	3 7/8	3 1/8	10	15/16	25/32	6 3/16	1.250	1.252	7/32	3 15/16	4 3/4	8.438	8.448
1202	12 1/2	-	-	3 5/8	12	1 1/4	1 1/32	7 3/8	1.500	1.502	9/32	4 7/16	5 1/4	9.750	9.750

STANDARD BORE TOLERANCES		
Nominal Diameter		
Over	Thru	Tolerance
-	3"	+ .002 - .000
3"	4"	+ .003 - .000
4"	5"	+ .004 - .000