

⚠ WARNING

- Read and follow all instructions carefully.
- Disconnect and lock-out power before installation and maintenance. Working on or near energized equipment can result in severe injury or death.
- Do not operate equipment without guards in place. Exposed equipment can result in severe injury or death.

⚠ CAUTION

- Periodic inspections should be performed. Failure to perform proper maintenance can result in premature product failure and personal injury.

TO DISCONNECT CHAIN

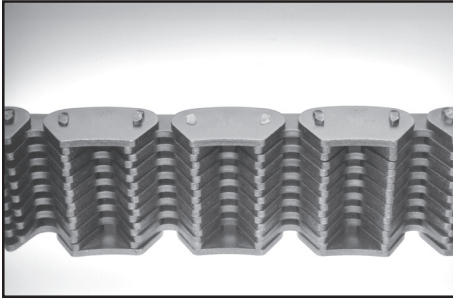


Fig. 1
Count the exact number of pitches desired. (Always an even number.) Grind off two outside rivet pin heads on one side of the chain. They should be flush with the link plate.



Fig. 2
Drive the two pins through the outside guide. Remove the outside guide and turn the chain over.

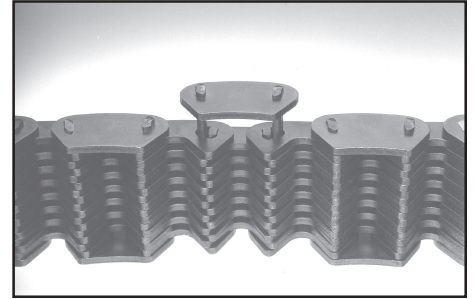


Fig. 3
Remove the pin link assembly.

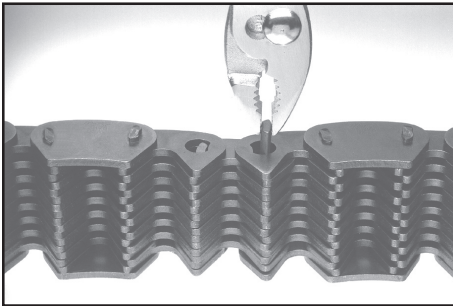


Fig. 4
Remove the two rockers.

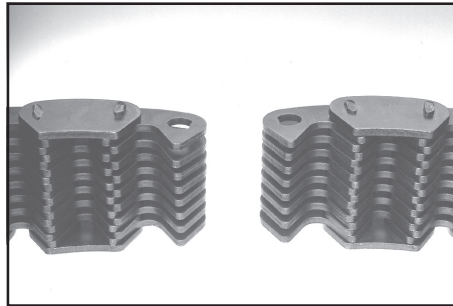


Fig. 9
Separate the two ends and the links will fall off.

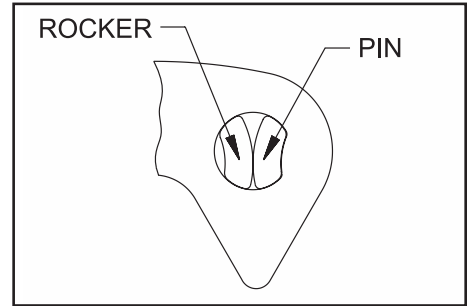


Fig. 6
Note the position and orientation of the pin relative to the rocker. They are designed to roll on each other.

TO ASSEMBLE CHAIN

(CONNECTING PIN KIT CONTAINS ONE CONNECTING PIN, ONE CONNECTING ROCKER AND TWO SPIROL PINS)

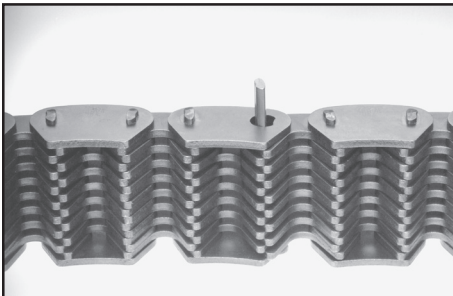


Fig. 7
Lace the joining ends together. (Note the difference in the joining guide link's aperture.) Insert the connecting rocker being careful of orientation. (See Fig. 6 above.)

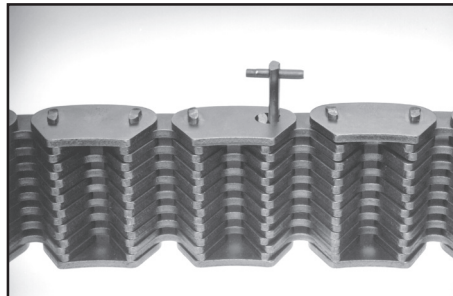


Fig. 8
Insert the connecting pin assembly which consists of a connecting pin and a tapped-in spirol pin. Carefully turn the chain over, and insert the other spirol pin.

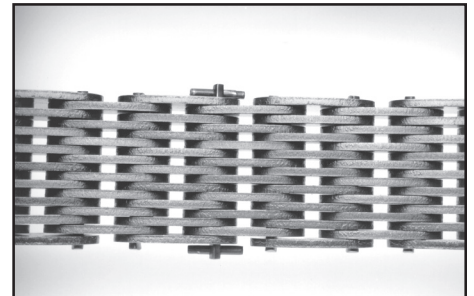


Fig. 9
A top view of the connected chain. Note the spirol pins on the side.

A Regal Brand

REGAL

Instructions For Connecting And Disconnecting 3/4", 1", 1-1/2", & 2" Pitch 61-115 (Old Style) HV Chain And 3/4" & 1" Pitch 61-112 Silent Chain.*

TO DISCONNECT CHAIN

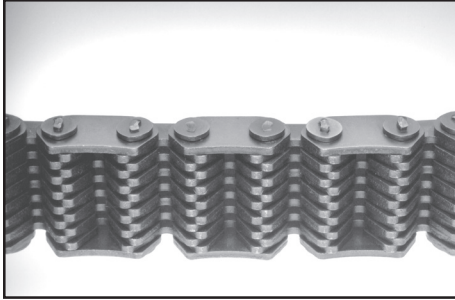


Fig. 1
Count the exact number of pitches desired. (Always an even number.) Grind off one outside rivet pin head on one side of the chain. It should be flush with the washer.

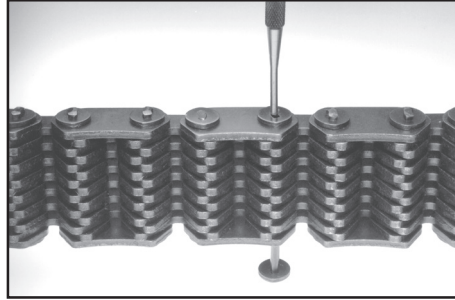


Fig. 2
Drive the pin through the washer. Remove the washer and turn the chain over.

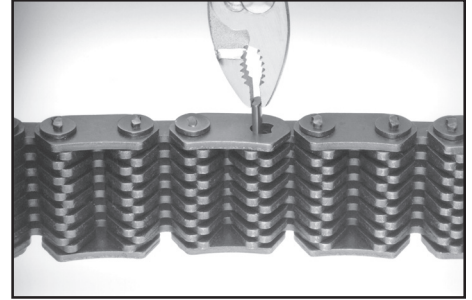


Fig. 3
Remove the rocker.

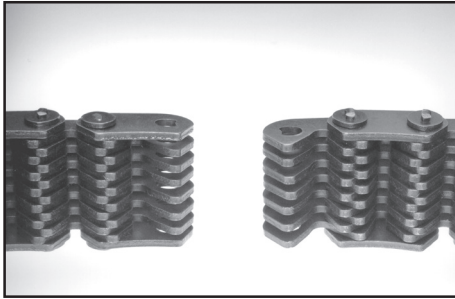


Fig. 4
Separate the two ends.

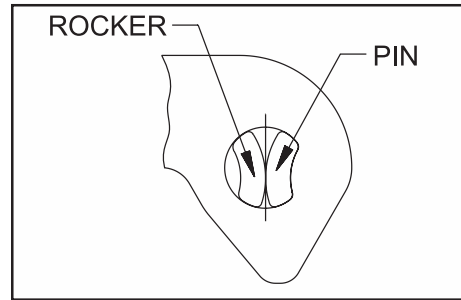


Fig. 5
Note the position and orientation of the pin relative to the rocker. They are designed to roll on each other.

TO ASSEMBLE CHAIN

(CONNECTING PIN KIT CONTAINS ONE CONNECTING PIN, ONE CONNECTING ROCKER AND TWO SPIROL PINS)

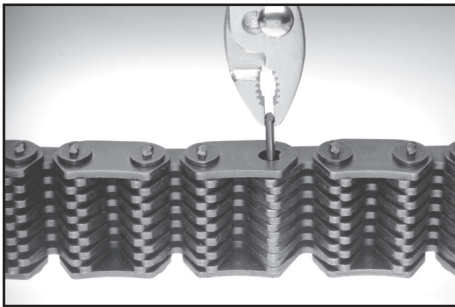


Fig. 6
Lace the ends together. Insert the connecting rocker being careful of orientation. (See Fig. 5 above.)

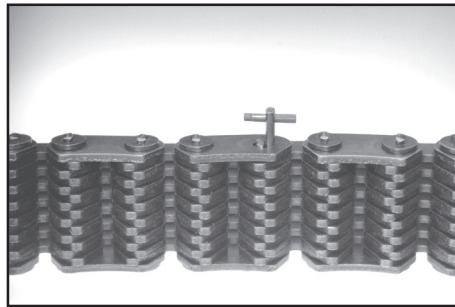


Fig. 7
Insert the connecting pin assembly which consists of a connecting pin and a tapped-in spirol pin. Carefully turn the chain over, and insert the other spirol pin.

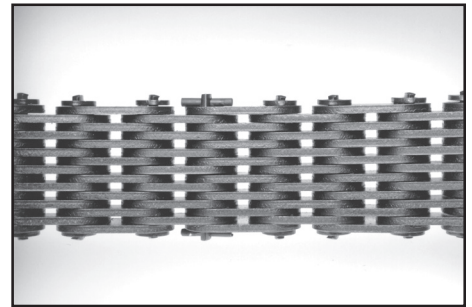


Fig. 8
A top view of the connected chain. Note the spirol pins on the sides.

***Note:** Silent chain will normally have center guides unlike those shown, and will have a normal drive link on the outside.

A Regal Brand

REGAL