



**Worm Gear Reducer
Torque Arm Kit
Installation & Maintenance Manual**

Power Transmission Solutions
Regal Beloit America, Inc.
7120 New Buffington Road
Florence, KY 41042
Application Engineering: 800 626 2093
www.RegalPTS.com

FORM
9981E
Revised
April 2016

⚠ WARNING

- Read and follow all instructions carefully.
- Disconnect and lock-out power before installation and maintenance. Working on or near energized equipment can result in severe injury or death.
- Do not operate equipment without guards in place. Exposed equipment can result in severe injury or death.

⚠ CAUTION

- Periodic inspections should be performed. Failure to perform proper maintenance can result in premature product failure and personal injury.

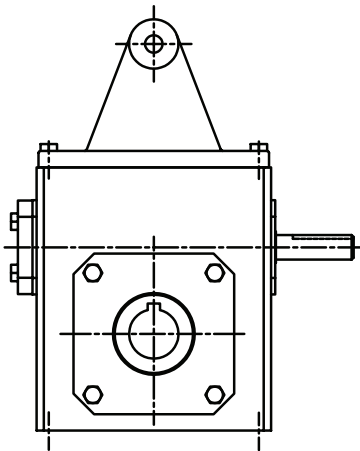
Unit Sizes 133-325 (Cast)

1. Place reducer on a smooth level surface with the side the torque arm kit will be mounted on up.
2. Align the clearance holes in the torque arm kit with the tapped holes in the reducer housing.
3. Insert the two (2) supplied capscrews thru the clearance holes in the base into the threaded holes in the housing.
4. Tighten to the appropriate torque as shown in Table 1.
5. Follow instructions supplied with the reducer for mounting assembled unit.

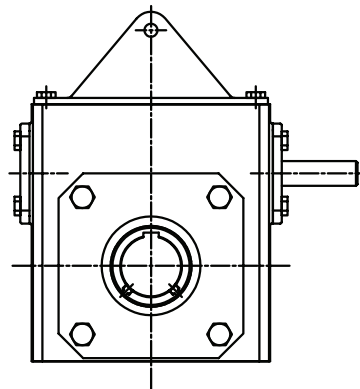
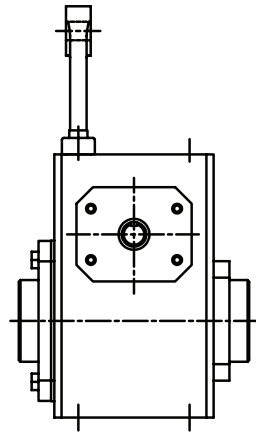
Unit Sizes 375-600 (Bent Steel)

1. Place reducer on a smooth level surface with the side the torque arm kit will be mounted on up.
2. Align the clearance holes in the torque arm kit with the tapped holes in the reducer housing.
3. Insert the two (2) supplied capscrews thru the clearance holes in the base into the threaded holes in the housing.
4. Tighten to the appropriate torque as shown in Table 1.
5. Follow instructions supplied with the reducer for mounting assembled unit.

Capscrew Tightening Torques			
Capscrew Size	Torque (FT/LBS)	Capscrew Size	Torque (FT/LBS)
¼ - 20	6.25	7/16 - 14	35.0
5/16 - 18	13.0	½ - 13	50.0
3/8 - 16	20.0	5/8 - 11	90.0



Torque Arm 133 - 325



Torque Arm 375 - 600

