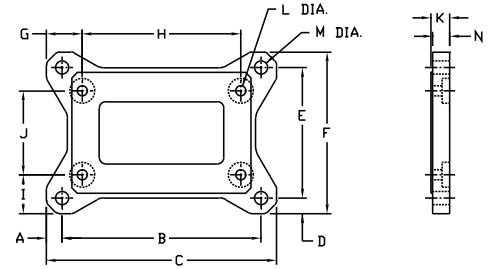


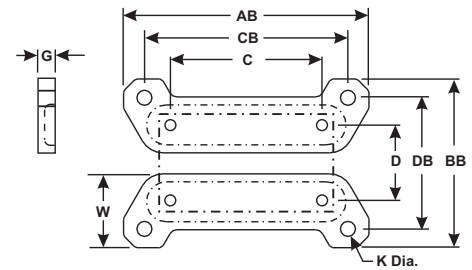
Dimensions (Inches) for Horizontal Standard Base Kit (133 - 325)

Part Number	A	B	C	D	E	F	G	H	J	K	L	M	N
133S-BK	0.50	4.38	5.38	0.50	3.31	5.38	1.06	3.25	2.00	0.53	0.343	0.343	0.47
154S-BK	0.62	5.25	6.49	0.62	4.31	5.55	1.15	4.19	2.75	0.59	0.344	0.406	0.56
175S-BK	0.63	5.75	7.00	0.63	4.50	5.75	1.41	4.19	2.75	0.69	0.34	0.406	0.63
206S-BK	0.66	6.38	7.69	0.66	4.69	6.00	1.34	5.00	2.88	0.72	0.406	0.468	0.66
237S-BK	0.66	7.06	8.38	0.66	4.88	6.19	1.03	5.00	2.88	0.75	0.406	0.469	0.69
262S-BK	0.63	8.00	9.25	0.63	5.25	6.50	1.44	6.38	3.38	0.75	0.406	0.531	0.69
300S-BK	0.78	8.44	10.00	0.81	5.88	7.50	1.50	7.00	4.00	0.75	0.469	0.531	0.69
325S-BK	0.81	9.50	11.13	0.81	6.13	7.75	1.81	7.50	4.00	0.88	0.468	0.531	0.81



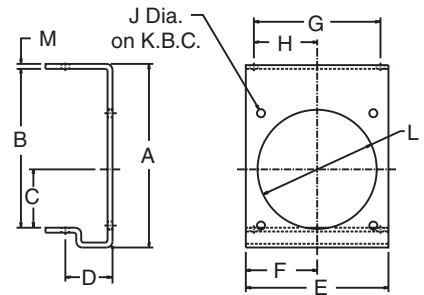
Dimensions (Inches) for Horizontal Standard Base Kit (375 - 600)

Part Number	AB	BB	C	CB	D	DB	G	K	W
375S-BK	12.00	8.63	8.50	10.38	4.75	7.00	0.94	0.594	2.88
450S-BK	13.88	9.33	9.56	12.12	5.81	7.63	1.12	0.656	2.88
516S-BK	16.38	10.37	11.00	14.13	5.81	8.37	1.12	0.781	3.47
600S-BK	19.00	12.00	12.75	16.50	6.38	9.50	1.25	0.906	4.00



Dimensions (Inches) for Flange Kit

Part Number	A	B	C	D	E	F	G	H	J	K	L	M
133H-FK	5.55	4.66	1.72	2.00	4.25	2.13	3.25	1.63	0.340	5.00	3.62	0.19
154H-FK	6.19	5.38	1.91	2.19	4.75	2.38	4.19	2.10	0.344	5.00	3.63	0.19
175H-FK	6.66	5.75	2.06	2.12	4.81	2.41	4.19	2.10	0.340	5.88	4.06	0.19
206H-FK	7.47	6.38	2.28	2.31	5.75	2.88	5.00	2.50	0.410	6.50	4.50	0.19
237H-FK	8.30	6.94	2.50	2.28	6.00	3.00	5.00	2.50	0.410	7.50	5.00	0.25
262H-FK	9.25	8.00	2.94	2.37	7.18	3.59	6.38	3.19	0.410	8.00	6.00	0.25
300H-FK	10.02	8.88	3.25	2.50	8.50	4.25	7.00	3.50	0.410	9.00	7.00	0.25
325H-FK	10.89	9.38	3.50	3.25	8.50	4.25	7.50	3.75	0.563	10.00	7.00	0.25
375H-FK	11.85	10.44	3.88	3.08	9.54	4.77	8.50	4.25	0.563	11.50	8.00	0.25
450H-FK	13.10	11.94	4.50	3.96	10.88	5.44	9.56	4.78	0.563	11.50	9.00	0.31
516H-FK	15.33	13.75	5.31	3.67	12.50	6.25	11.00	5.50	0.687	14.00	10.00	0.31
600H-FK	18.22	16.50	6.50	4.03	14.50	7.25	12.75	6.38	0.687	15.56	12.00	0.38



Dimensions (Inches) for Vertical Low/High Base Kit (133 - 325)

Part Number	A	B	C	D	F	G	H	J	K	L	M	N
133VL-BK & 133VH-BK	0.38	3.25	4.00	3.08	0.94	1.63	0.343	0.50	3.00	0.92	0.375	0.25
154VL-BK & 154VH-BK	0.41	4.19	5.00	3.52	1.38	1.63	0.343	0.50	4.00	0.81	0.438	0.25
175VL-BK & 175VH-BK	0.41	4.19	5.00	3.52	1.38	1.63	0.343	0.50	4.00	0.81	0.438	0.25
206VL-BK & 206VH-BK	0.50	5.00	6.00	3.89	1.75	1.69	0.438	0.46	4.88	1.00	0.560	0.38
237VL-BK & 237VH-BK	0.50	5.00	6.00	4.31	1.87	1.94	0.406	0.56	4.88	0.94	0.500	0.38
262VL-BK & 262VH-BK	0.31	6.38	7.00	4.84	1.94	1.94	0.406	0.63	5.75	1.06	0.562	0.38
300VL-BK & 300VH-BK	0.50	7.00	8.00	8.00	1.94	1.94	0.468	1.00	6.00	1.13	0.562	0.38
325VL-BK & 325VH-BK	0.75	7.50	9.00	4.95	1.56	2.69	0.468	1.44	6.13	1.25	0.562	0.38

