

PRODUCT INFORMATION PACKET

marathon[®]
Motors

Model No: 5KC39PN5105X
Catalog No: C1083A
3/4,3450,DP,56C,1/60/115/230
Jet Pump



Regal and Marathon are trademarks of Regal Beloit Corporation or one of its affiliated companies.
©2018 Regal Beloit Corporation, All Rights Reserved. MC017097E

REGAL



Nameplate Specifications

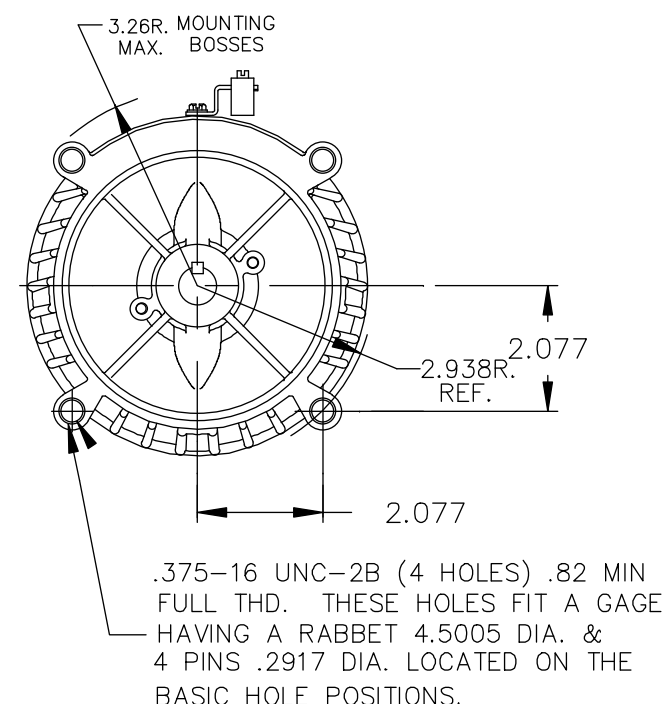
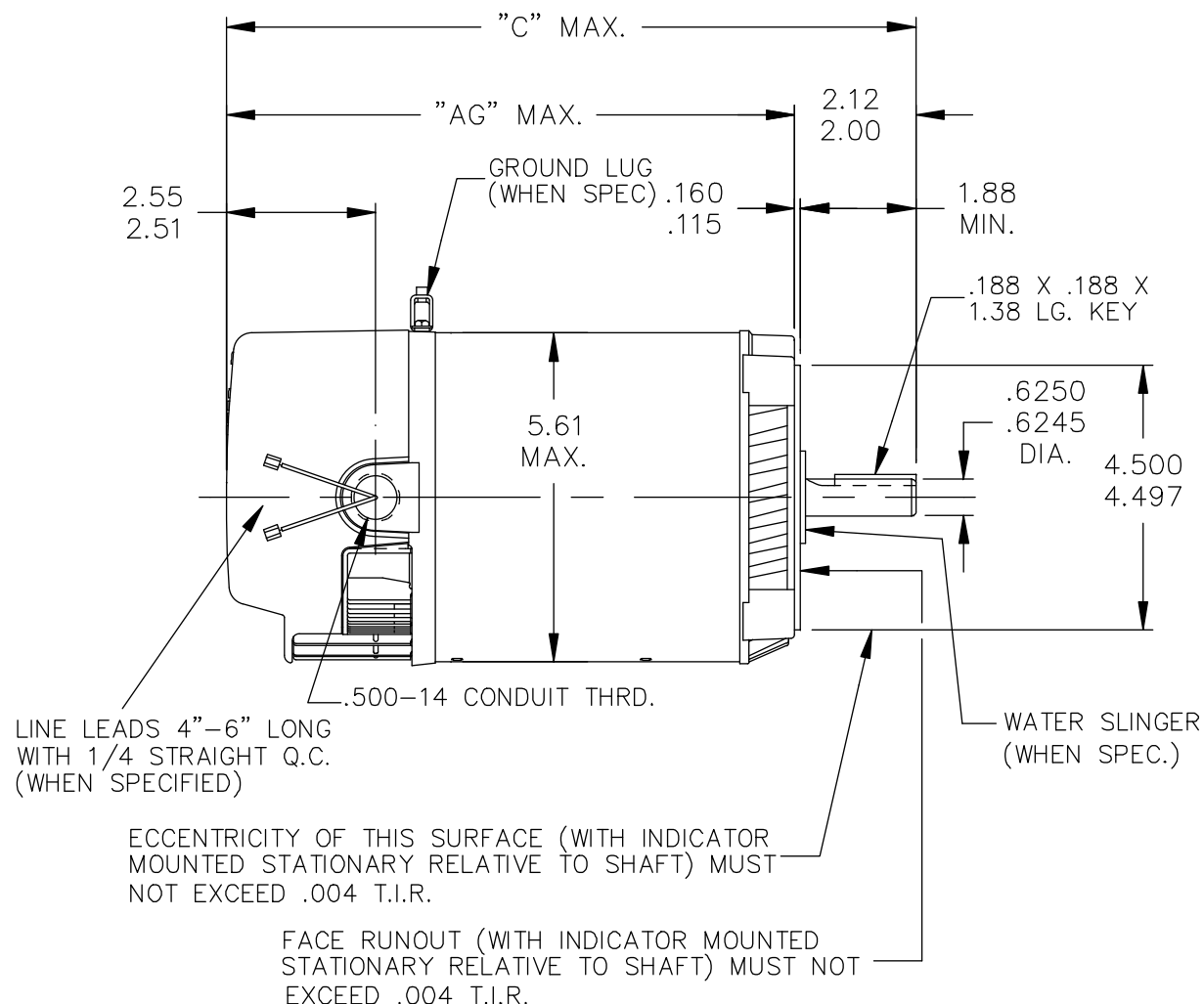
Output HP	0.75 Hp	Output KW	0.56 kW
Frequency	60 Hz	Voltage	115/230 V
Current	13.0,6.5 A	Speed	3450 rpm
Service Factor	1.5	Phase	1
Efficiency	69.5 %	Duty	CONT
Insulation Class	B	KVA Code	N
Frame	56C	Enclosure	DP
Overload Protector	AUTO	Ambient Temperature	50 °C
Drive End Bearing Size	6203	Opp Drive End Bearing Size	6203
UL	Recognized	CSA	Yes
CE	N		

Technical Specifications


Electrical Type	Capacitor start(CSIR)	Starting Method	SM
Poles	2	Rotation	CW
Mounting	RD	Motor Orientation	ANY
Drive End Bearing	LOCKED	Opp Drive End Bearing	BALL
Frame Material	Rolled Steel	Overall Length	13.47 in
Frame Length	6.87 in	Shaft Diameter	0.63 in
Shaft Extension	1.88 in		
Outline Drawing	52A107160P3	Connection Diagram	52A106889

This is an uncontrolled document once printed or downloaded and is subject to change without notice. Date Created: 04/05/2018

52A107160



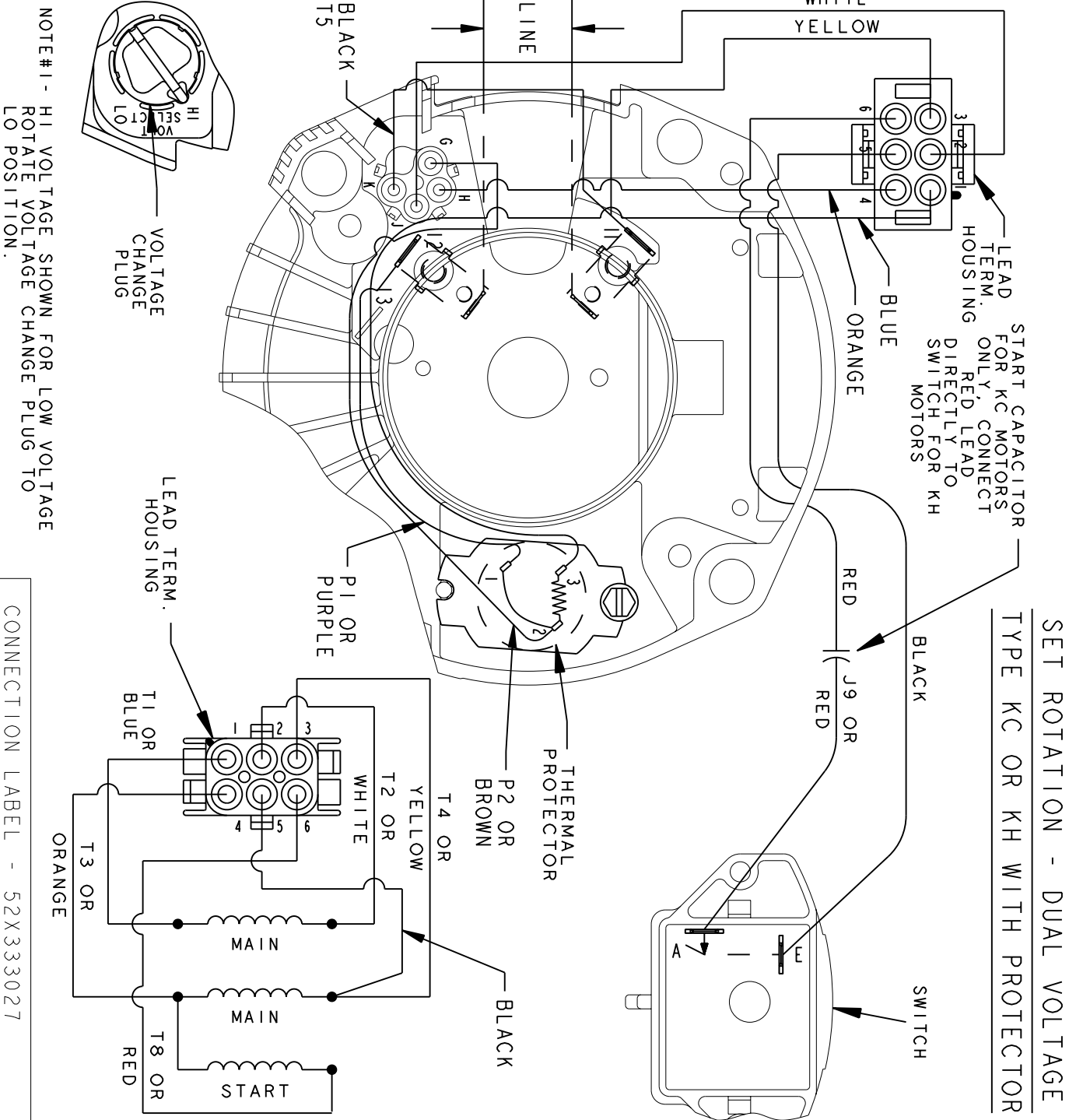
4	KC	39	56C	15.10	12.98	8.50
3	KC	39	56C	13.47	11.35	6.87
2	KC	33	56C	12.01	9.89	5.41
1	KC,KH	39	56C	11.03	8.91	4.43
P	TYPE	RBC SIZE	NEMA FR	C	AG	SHELL REF.

			TOLERANCES UNLESS SPECIFIED		 REGAL-BELOIT CORPORATION		DRAWN BJS 06/13/91	
NO.	REVISION	BY & DATE	CHK	ANG			CHK	
10	JET/POOL IS REPLACED BY JET PUMP PER ECO-0033464	PVR 05/15/13	DEC.	INCHES	TITLE 2 COMPARTMENT UPGRADE - 56C - JET PUMP		APPD	CCP 03/10/95
9	CHG TO RBC FORMAT PER ISO5-1777	SUD 02/21/06	.X	±.1			SCALE	3=8
8	ADDED PART #4.	MDP 10/24/95	.XX	±.03	MAT'L. FINISH		REF	
6	REDRAWN BY 2M SOFTWARE CO.	CCP 03/10/95	.XXX	±.005			FMF	
5	REV'D ORIENTATION OF GROUND LUG	BLJ 11/11/91	.XXXX	±.0005	SIZE DRAWING NO.		PREV	
THIS DRAWING IN DESIGN AND DETAIL IS OUR PROPERTY AND MUST NOT BE USED EXCEPT IN CONNECTION WITH OUR WORK ALL RIGHTS OF DESIGN AND INVENTION ARE RESERVED THIS IS AN ELECTRONICALLY GENERATED DOCUMENT - DO NOT SCALE THIS PRINT			RFP		CAD FILE 52A107160		A	52A107160
			DIST					

THIRD ANGLE PROJECTION		REVISIONS		
	REV.	DESCRIPTION	DATE	APPROVED
	2	UPDATED TO RBC FORMAT	01/11/06	MAM

52A106889 2

SIZE A DRAWING NO.



SIGNATURES		DATE
MODEL	B.L.J.	07/21/92
DETAIL	.	.
CHECKED	.	.
ENGRG	.	.
MFG	.	.
QUALITY	.	.
ISSUED	B.L.J.	07/21/92
SOLID MODEL: 52A106889		

REGAL-BELOIT CORPORATION

CONNECTION DIAGRAM

FMF: 2 COMPARTMENT DUAL VOLT, SET ROTATION

SIZE: DRAWING A

SCALE: 1.000 REF. No: .

SHEET 1 of 1