

Chains & Sprockets	Wear Strips	Side Guide Brackets & Accessories	Levelers
Modular Belts & Sprockets	Chain & Belt Return Systems	Frame & Structure Supports	Bearings
Curves & Tracks	Side Guide Solutions	Miscellaneous Products	Related Information



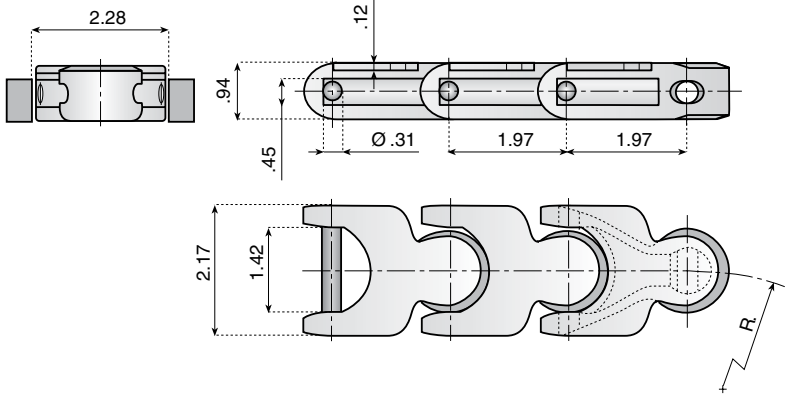
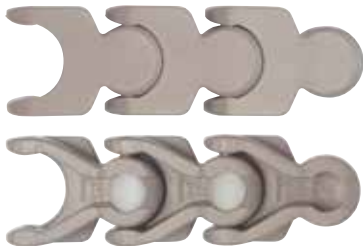
Click here for related information.

**21220a**

[www.SystemPlastSmartGuide.com](http://www.SystemPlastSmartGuide.com)

**1700 - 1701 TAB**

**Multiflex Chains**



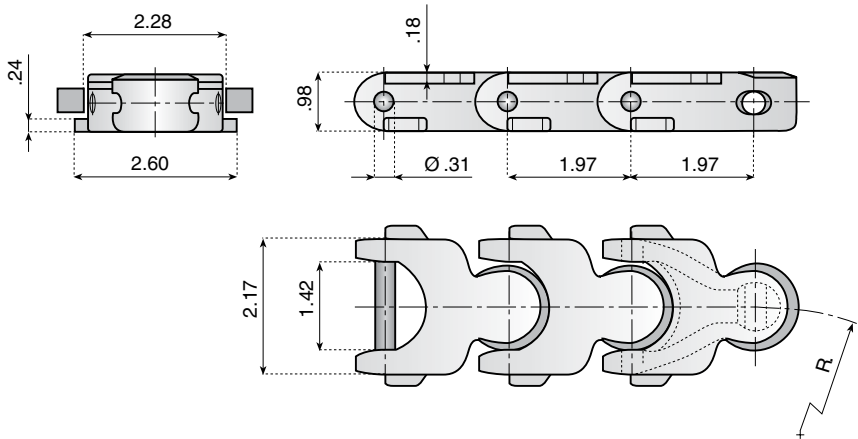
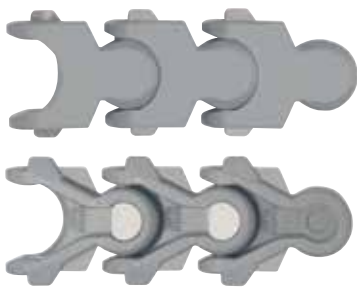
**Characteristics:** Used for conveying crates in the dairy industry. Can also be used in accumulation applications.

**Pin Material:** 304 series austenitic stainless steel



**21230a**

Item Description	Item Number	Link Material	Breaking Load (Lbs.)	R min.	Weight lbs/ft
LF1700	AA1100164	LF	1910	4.92	.84



**Characteristics:** 1701 TAB have identical dimensions as 1700 series but include TAB configuration to hold down chains especially in curves.

**Pin Material:** 304 series austenitic stainless steel

Item Description	Item Number	Link Material	Breaking Load (Lbs.)	R min.	Weight lbs/ft
LF1701-TAB	11956	LF	1910	5.31	.97

Standard length: 61 pitches (10 ft. - 3.050 m)