

Chains & sprockets	Wear strips	Side guide brackets & accessories	Levelers	Engineering manual
Modular belts & sprockets	Chain & belt return systems	Frame & structure supports	Bearing supports	
Curves & tracks	Side guide solutions	Miscellaneous products	Equipment	

SYSTEM PLAST®

Smart guide

10110a

GENERAL INDEX

www.SystemPlastSmartGuide.com



RegalRexnord™

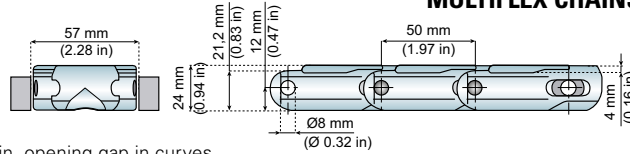
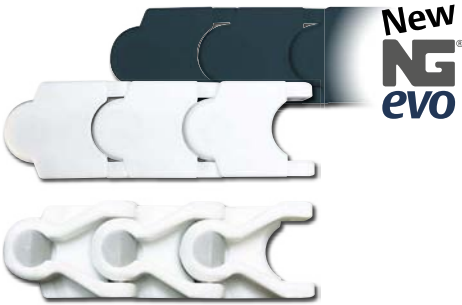
Chains & sprockets	Wear strips	Side guide brackets & accessories	Levelers	Engineering manual
Modular belts & sprockets	Chain & belt return systems	Frame & structure supports	Bearing supports	
Curves & tracks	Side guide solutions	Miscellaneous products	Equipment	

11530a

1706 - 1700 - 1702 - 1701 TAB

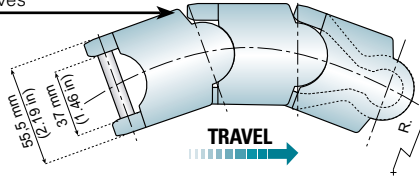
www.SystemPlastSmartGuide.com

MULTIFLEX CHAINS



Min. opening gap in curves for improved safety

1706
SAFETY CHAIN



Pin Material: Austenitic Stainless Steel

ITEM DESCRIPTION	MATERIAL LINK	BREAKING LOAD		R MIN.		WEIGHT	
		N	lbs	mm	in	Kg/m	lbs/ft.
NGE1706	NGE Grey Blue	7200	1600	125	4.9	1,3	0.9
LFW1706	LFW White	8000	1800	125	4.9	1,3	0.9

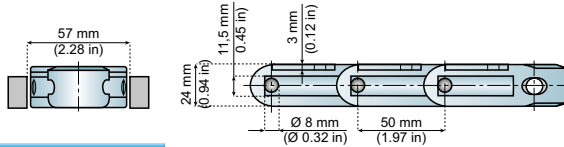
NG® EVO conveyor components
made from engineered plastic resin

- Longer wearlife than acetal
- Lower friction than acetal
- Good chemical resistance
- High abrasion resistance

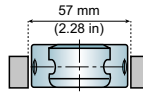
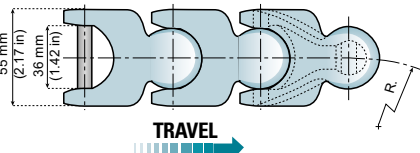
It meets the requirement for materials as stated by EC1935/2004 and FDA CFR21 norms for direct food contact

Less dust than with acetal chains

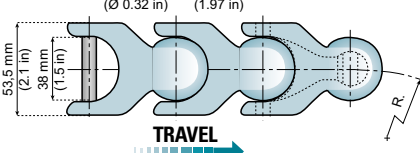
More.....



1700

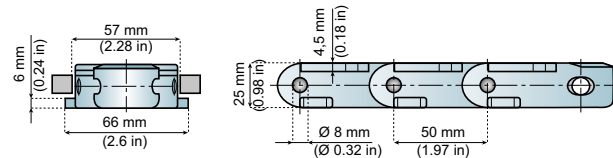
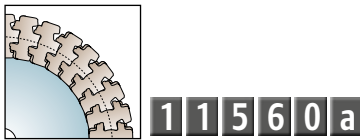


1702

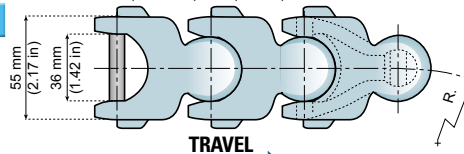


Pin Material:
Austenitic Stainless Steel

ITEM DESCRIPTION	MATERIAL LINK	BREAKING LOAD		R MIN.		WEIGHT	
		N	lbs	mm	in	Kg/m	lbs/ft.
NGE1700	NGE Grey Blue	7700	1700	150	5.9	1,3	0.9
LF1700	LF Brown	8500	1900	150	5.9	1,3	0.9
LFG1700	LFG Grey	8500	1900	150	5.9	1,3	0.9
LFW1700	LFW White	8500	1900	150	5.9	1,3	0.9
NGE1702	NGE Grey Blue	8600	1900	150	5.9	1,4	0.9
LF1702	LF Brown	9500	2100	150	5.9	1,4	0.9
LFG1702	LFG Grey	9500	2100	150	5.9	1,4	0.9
LFW1702	LFW White	9500	2100	150	5.9	1,4	0.9



1701 TAB



Pin Material:
Austenitic Stainless Steel

1701 TAB and have identical dimensions as 1700 series but include TAB configuration to hold down chains especially in curves.

ITEM DESCRIPTION	MATERIAL LINK	BREAKING LOAD		R MIN.		WEIGHT	
		N	lbs	mm	in	Kg/m	lbs/ft.
NGE1701-TAB	NGE Grey Blue	8600	1900	150	5.9	1,4	0.9
LF1701-TAB	LF Brown	9500	2100	150	5.9	1,4	0.9
LFW1701-TAB	LFW White	9500	2100	150	5.9	1,4	0.9

Standard length: 61 pitches (10 ft. - 3,050 m)