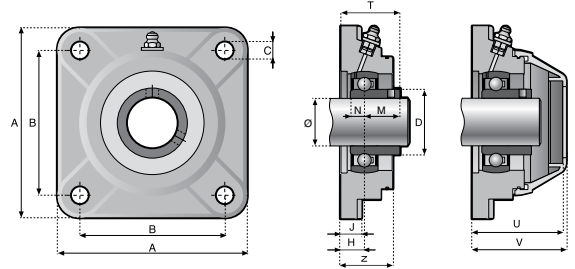




- Duty:** Standard
- Rolling Elements:** Ball
- Bearing Material:** 52100 Chrome Steel or 400 Series Stainless Steel
- Housing:** Black Polyamide
- Self-Alignment:** ± 1°
- Lock:** Setscrew
- Bearing Seal:** Single Lip Contact
- Back Seal:** Spring Seal
- End Cap:** Yellow Protective Cap
- Temperature:** 30° to 180°F (0° to 82°C)



This UCFQ style mounted bearing uses external fitting caps.

UCFQ SERIES FOUR BOLT FLANGE - POLYAMIDE - SETSCREW LOCKING - EXTERNAL FIT SAFETY CAP

BORE DIAMETER		52100 CHROME STEEL BEARING INSERT		
		OPTIONAL SAFETY CAP	SEALED CLOSED CAP	SEALED OPEN CAP
inch	mm	PART DESCRIPTION	PART DESCRIPTION	PART DESCRIPTION
3/4	-	UCFQ204-12	UCFQ204-12-CEC	UCFQ204-12-OEC
-	20	UCFQ204-20M	UCFQ204-20M-CEC	UCFQ204-20M-OEC
1	-	UCFQ205-16	UCFQ205-16-CEC	UCFQ205-16-OEC
-	25	UCFQ205-25M	UCFQ205-25M-CEC	UCFQ205-25M-OEC
1 3/16	-	UCFQ206-19	UCFQ206-19-CEC	UCFQ206-19-OEC
1 1/4R	-	UCFQ206-20	UCFQ206-20-CEC	UCFQ206-20-OEC
-	30	UCFQ206-30M	UCFQ206-30M-CEC	UCFQ206-30M-OEC
1 1/4	-	UCFQ207-20	-	-
1 7/16	-	UCFQ207-23	UCFQ207-23-CEC	UCFQ207-23-OEC
-	35	UCFQ207-35M	UCFQ207-35M-CEC	UCFQ207-35M-OEC
1 1/2	-	UCFQ208-24	UCFQ208-24-CEC	UCFQ208-24-OEC
-	40	UCFQ208-40M	UCFQ208-40M-CEC	UCFQ208-40M-OEC

Note: Bearing assembly supplied with a lubrication fitting installed in the housing with an optional plug in the box if relubrication is not required.

BORE DIAMETER		DIMENSIONS inch / mm					
		A	B	C	D	H	J
inch	mm						
3/4	-	3 25/64	2 1/2	27/64	1 1/8	39/64	25/64
-	20	86.1	63.5	11	28.4	15.5	9.9
1	-	3 3/4	2 3/4	29/64	1 11/32	43/64	1/2
-	25	95.0	70.1	11.5	34.0	17.0	12.2
1 3/16	-	4 1/4	3 1/4	29/64	1 9/32	9/16	1/2
1 1/4R	-	108.0	82.6	11.5	32.5	14.5	12.2
1 1/4	-	4 5/8	3 5/8	35/64	1 27/32	23/32	5/8
1 7/16	-	118.1	91.9	14.0	46.7	18.0	15.7
-	35						
1 1/2	-	1 3/16	4	35/64	2 1/16	23/32	5/8
-	40	132.1	101.6	14.0	52.6	18.0	15.7

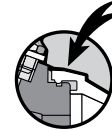
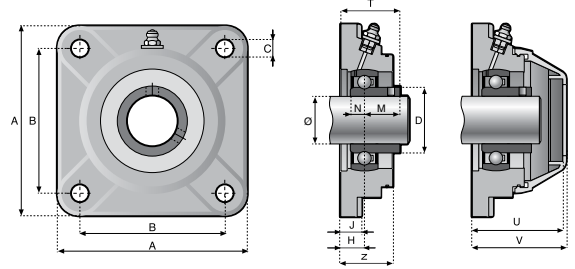
UCFQ SERIES FOUR BOLT FLANGE - POLYAMIDE - SETSCREW LOCKING - EXTERNAL FIT SAFETY CAP

BORE DIAMETER		STAINLESS STEEL BEARING INSERT		
		OPTIONAL SAFETY CAP	SEALED CLOSED CAP	SEALED OPEN CAP
inch	mm	PART DESCRIPTION	PART DESCRIPTION	PART DESCRIPTION
3/4	-	UCFQ204-12-SS	UCFQ204-12-SS-CEC	UCFQ204-12-SS-OEC
-	20	UCFQ204-20M-SS	UCFQ204-20M-SS-CEC	UCFQ204-20M-SS-OEC
1	-	UCFQ205-16-SS	UCFQ205-16-SS-CEC	UCFQ205-16-SS-OEC
-	25	UCFQ205-25M-SS	UCFQ205-25M-SS-CEC	UCFQ205-25M-SS-OEC
1 3/16	-	UCFQ206-19-SS	UCFQ206-19-SS-CEC	UCFQ206-19-SS-OEC
1 1/4R	-	UCFQ206-20-SS	UCFQ206-20-SS-CEC	UCFQ206-20-SS-OEC
-	30	UCFQ206-30M-SS	UCFQ206-30M-SS-CEC	UCFQ206-30M-SS-OEC
1 1/4	-	UCFQ207-20-SS	-	-
1 7/16	-	UCFQ207-23-SS	UCFQ207-23-SS-CEC	UCFQ207-23-SS-OEC
-	35	UCFQ207-35M-SS	UCFQ207-35M-SS-CEC	UCFQ207-35M-SS-OEC
1 1/2	-	UCFQ208-24-SS	UCFQ208-24-SS-CEC	UCFQ208-24-SS-OEC
-	40	UCFQ208-40M-SS	UCFQ208-40M-SS-CEC	UCFQ208-40M-SS-OEC

BORE DIAMETER		DIMENSIONS inch / mm									WEIGHT (lbs/kgs)
		M	M STAINLESS	N	N STAINLESS	T	T STAINLESS	U	V	Z	
inch	mm										
3/4	-	23/32	23/32	9/32	19/64	1 21/64	1 21/64	1 7/8	1 61/64	1	0.51
-	20	18.3	18.3	7.11	7.6	33.8	33.8	47.5	49.5	25.9	0.23
1	-	49/64	25/32	19/64	19/64	1 7/16	1 7/16	2 1/16	2 1/8	1 9/64	0.75
-	25	19.6	19.8	7.6	7.6	36.6	36.8	52.3	54.1	29.0	0.34
1 3/16	-	7/8	7/8	5/16	11/32	1 7/16	1 29/64	2	2 1/16	1 9/64	1.10
1 1/4R	-										
-	30	22.1	22.1	7.9	8.9	36.6	36.8	50.8	52.6	29.0	0.50
1 1/4	-	1	1	3/8	3/8	1 23/32	1 23/32	2 1/2	2 19/32	1 19/64	1.43
1 7/16	-										
-	35	25.4	25.4	9.4	9.7	43.4	43.4	63.8	65.8	33.0	0.65
1 1/2	-	1 3/16	1 3/16	11/32	7/16	1 57/64	1 57/64	2 1/2	2 9/16	1 3/8	1.81
-	40	30.2	30.2	8.9	10.9	48.0	48.0	63.2	65.3	35.1	0.82



- Duty:** Standard
- Rolling Elements:** Ball
- Bearing Material:** 52100 Chrome Steel or 400 Series Stainless Steel
- Housing:** White Nolu®-Clean Housing
- Self-Alignment:** ± 1°
- Lock:** Setscrew
- Bearing Seal:** Single Lip Contact
- Back Seal:** Spring Seal
- End Cap:** White Protective Cap
- Temperature:** 30° to 180°F (0° to 82°C)



This UCFQ style mounted bearing uses external fitting caps.

UCFQ SERIES FOUR BOLT FLANGE - NOLU®-CLEAN HOUSING - SETSCREW LOCKING - EXTERNAL FIT SAFETY CAP

BORE DIAMETER		52100 CHROME STEEL BEARING INSERT		
		OPTIONAL SAFETY CAP	SEALED CLOSED CAP	SEALED OPEN CAP
inch	mm	PART DESCRIPTION	PART DESCRIPTION	PART DESCRIPTION
3/4	-	UCFQ204-12-NC	UCFQ204-12-NC-CEC	UCFQ204-12-NC-OEC
-	20	UCFQ204-20M-NC	UCFQ204-20M-NC-CEC	UCFQ204-20M-NC-OEC
1	-	UCFQ205-16-NC	UCFQ205-16-NC-CEC	UCFQ205-16-NC-OEC
-	25	UCFQ205-25M-NC	UCFQ205-25M-NC-CEC	UCFQ205-25M-NC-OEC
1 3/16	-	UCFQ206-19-NC	UCFQ206-19-NC-CEC	UCFQ206-19-NC-OEC
1 1/4R	-	UCFQ206-20-NC	UCFQ206-20-NC-CEC	UCFQ206-20-NC-OEC
-	30	UCFQ206-30M-NC	UCFQ206-30M-NC-CEC	UCFQ206-30M-NC-OEC
1 1/4	-	UCFQ207-20-NC	-	-
1 7/16	-	UCFQ207-23-NC	UCFQ207-23-NC-CEC	UCFQ207-23-NC-OEC
-	35	UCFQ207-35M-NC	UCFQ207-35M-NC-CEC	UCFQ207-35M-NC-OEC
1 1/2	-	UCFQ208-24-NC	UCFQ208-24-NC-CEC	UCFQ208-24-NC-OEC
-	40	UCFQ208-40M-NC	UCFQ208-40M-NC-CEC	UCFQ208-40M-NC-OEC

Note: Bearing assembly supplied with a lubrication fitting installed in the housing with an optional plug in the box if relubrication is not required.

BORE DIAMETER		DIMENSIONS inch / mm					
		A	B	C	D	H	J
inch	mm						
3/4	-	3 25/64	2 1/2	27/64	1 1/8	39/64	25/64
-	20	86.1	63.5	11	28.4	15.5	9.9
1	-	3 3/4	2 3/4	29/64	1 11/32	43/64	1/2
-	25	95.0	70.1	11.5	34.0	17.0	12.2
1 3/16	-	4 1/4	3 1/4	29/64	1 9/32	9/16	1/2
1 1/4R	-	108.0	82.6	11.5	32.5	14.5	12.2
1 1/4	-	4 5/8	3 5/8	35/64	1 27/32	23/32	5/8
1 7/16	-	118.1	91.9	14.0	46.7	18.0	15.7
-	35						
1 1/2	-	1 3/16	4	35/64	2 1/16	23/32	5/8
-	40	132.1	101.6	14.0	52.6	18.0	15.7

UCFQ SERIES FOUR BOLT FLANGE - NOLU®-CLEAN HOUSING - SETSCREW LOCKING - EXTERNAL FIT SAFETY CAP

BORE DIAMETER		STAINLESS STEEL BEARING INSERT		
		OPTIONAL SAFETY CAP	SEALED CLOSED CAP	SEALED OPEN CAP
inch	mm	PART DESCRIPTION	PART DESCRIPTION	PART DESCRIPTION
3/4	-	UCFQ204-12-SS-NC	UCFQ204-12-SS-NC-CEC	UCFQ204-12-SS-NC-OEC
-	20	UCFQ204-20M-SS-NC	UCFQ204-20M-SS-NC-CEC	UCFQ204-20M-SS-NC-OEC
1	-	UCFQ205-16-SS-NC	UCFQ205-16-SS-NC-CEC	UCFQ205-16-SS-NC-OEC
-	25	UCFQ205-25M-SS-NC	UCFQ205-25M-SS-NC-CEC	UCFQ205-25M-SS-NC-OEC
1 3/16	-	UCFQ206-19-SS-NC	UCFQ206-19-SS-NC-CEC	UCFQ206-19-SS-NC-OEC
1 1/4R	-	UCFQ206-20-SS-NC	UCFQ206-20-SS-NC-CEC	UCFQ206-20-SS-NC-OEC
-	30	UCFQ206-30M-SS-NC	UCFQ206-30M-SS-NC-CEC	UCFQ206-30M-SS-NC-OEC
1 1/4	-	UCFQ207-20-SS-NC	-	-
1 7/16	-	UCFQ207-23-SS-NC	UCFQ207-23-SS-NC-CEC	UCFQ207-23-SS-NC-OEC
-	35	UCFQ207-35M-SS-NC	UCFQ207-35M-SS-NC-CEC	UCFQ207-35M-SS-NC-OEC
1 1/2	-	UCFQ208-24-SS-NC	UCFQ208-24-SS-NC-CEC	UCFQ208-24-SS-NC-OEC
-	40	UCFQ208-40M-SS-NC	UCFQ208-40M-SS-NC-CEC	UCFQ208-40M-SS-NC-OEC

BORE DIAMETER		DIMENSIONS inch / mm									WEIGHT (lbs/kgs)
		M	M STAINLESS	N	N STAINLESS	T	T STAINLESS	U	V	Z	
inch	mm										
3/4	-	23/32	23/32	9/32	19/64	1 21/64	1 21/64	1 7/8	1 61/64	1	0.51
-	20	18.3	18.3	7.11	7.6	33.8	33.8	47.5	49.5	25.9	0.23
1	-	49/64	25/32	19/64	19/64	1 7/16	1 7/16	2 1/16	2 1/8	1 9/64	0.75
-	25	19.6	19.8	7.6	7.6	36.6	36.8	52.3	54.1	29.0	0.34
1 3/16	-	7/8	7/8	5/16	11/32	1 7/16	1 29/64	2	2 1/16	1 9/64	1.10
1 1/4R	-										
-	30	22.1	22.1	7.9	8.9	36.6	36.8	50.8	52.6	29.0	0.50
1 1/4	-	1	1	3/8	3/8	1 23/32	1 23/32	2 1/2	2 19/32	1 19/64	1.43
1 7/16	-										
-	35	25.4	25.4	9.4	9.7	43.4	43.4	63.8	65.8	33.0	0.65
1 1/2	-	1 3/16	1 3/16	11/32	7/16	1 57/64	1 57/64	2 1/2	2 9/16	1 3/8	1.81
-	40	30.2	30.2	8.9	10.9	48.0	48.0	63.2	65.3	35.1	0.82