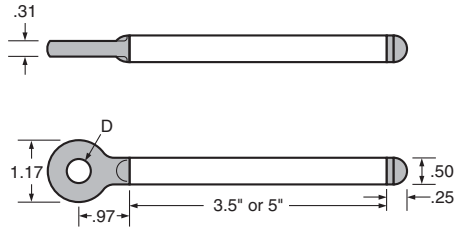




## 628

### Accessory Holder

This unique stainless steel and molded plastic design is a strong, yet economical method for holding many types of accessories. A variety of bore sizes are available.



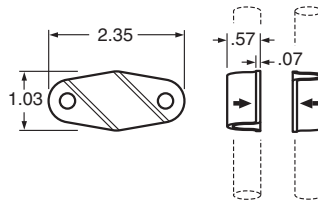
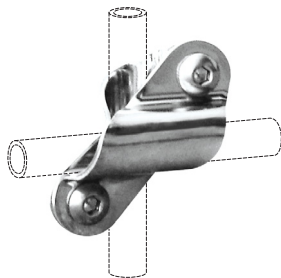
**Material:** Polyamide holder, stainless steel rod.

Part Number	Rod Length (in.)	Rod Ø (in.)	Accessory Hole Ø (D)
VG-628-35-12-14	3.5	1/2	.25
VG-628-35-12-38	3.5	1/2	.38
VG-628-35-12-12	3.5	1/2	.50
VG-628-35-12-34	3.5	1/2	.75
VG-628-50-12-14	5.0	1/2	.25
VG-628-50-12-38	5.0	1/2	.38
VG-628-50-12-12	5.0	1/2	.50
VG-628-50-12-58	5.0	1/2	.63
VG-628-50-12-34	5.0	1/2	.75

## 629

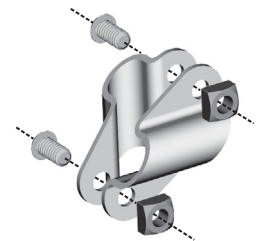
### Cross Clamp

Stainless steel clamp used to connect two Ø1/2 inch round rods at 90°. Fastening hardware is included.



**Material:** Stainless steel.

Part Number	Rod Ø (in.)	X	Rod Ø (in.)
VG-629-12-12	1/2		1/2

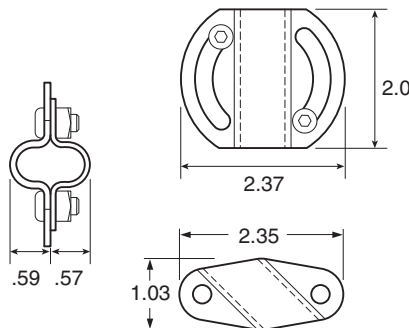
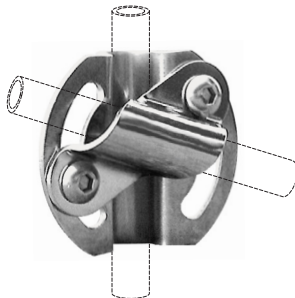


Brackets & Positioning

## 629R

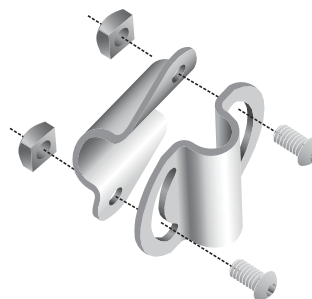
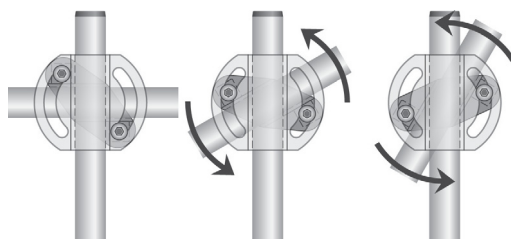
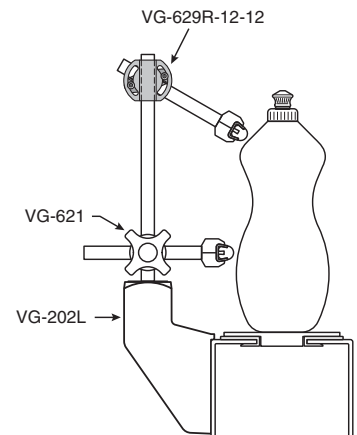
### Rotating Cross Clamp

Stainless steel clamp used to connect two Ø1/2 inch round rods at any angle. Fastening hardware is included.



**Material:** Stainless steel.

Part Number	Rod Ø (in.)	X	Rod Ø (in.)
VG-629R-12-12	1/2		1/2



**SYSTEM  
PLAST™**