

Chains & Sprockets	Wear Strips	Side Guide Brackets & Accessories	Levelers
Modular Belts & Sprockets	Chain & Belt Return Systems	Frame & Structure Supports	Bearings
Curves & Tracks	Side Guide Solutions	Miscellaneous Products	Related Information



60640a

Cable Pulleys and Track

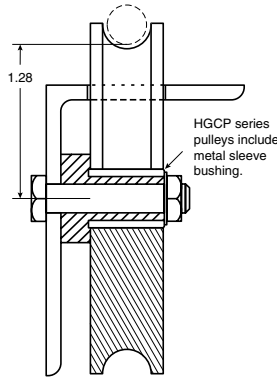
www.SystemPlastSmartGuide.com



Click here for related information.

Cable Pulley with Metal Sleeve Bushing

Made from a special grade of UHMW polymer to produce a tough, abrasion resistant, low friction pulley that provides long corrosion free service with a significant reduction in noise levels. Custom designs available. Shown is a standard 3/8" cable pulley with different mounting bolt diameters. Pulleys are supplied with a stainless steel powdered metal sleeve to form an axle after assembly. A nut, bolt and washer can be supplied if needed.

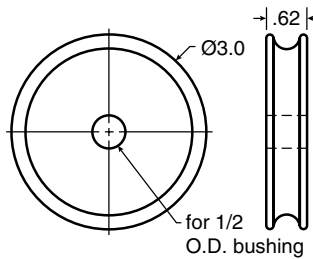


Material: Green UHMW.

Item Description	Bolt Ø
HGCP-1004	1/4
HGCP-1005	5/16

Cable Pulley

Corrosion resistant and long lasting design offers quiet and smooth operation. An ideal replacement for all types of cable conveyors. The pulleys are available with a variety of stainless steel bushings.



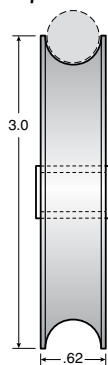
Material: Green UHMW.

Item Description
VG-CS-3.0

1/2" Cable Pulley

Made from a special grade of UHMW polymer to produce a tough, abrasion resistant, low friction pulley that provides long corrosion free service with a significant reduction in noise levels. A stainless steel powdered metal sleeve to form an axle after assembly is supplied. Pulleys can also be designed to your specifications by contacting our engineering department.

1/2" Cable

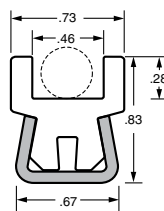
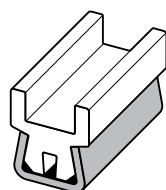


Material: Green UHMW.

Item Description	Cable Size	Bolt Ø
HGCP-12-1004	1/2	1/4

Cable Track

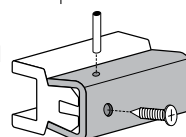
A positive guide and wear surface for 3/8 dia. cable track runs. Replaces the cable pulleys on the working side of the cable.



Material: 304 stainless steel sheath (14 ga.), UHMW insert.

Item Description	
VG-SSCT-20	20 ft

Important Note: When Valu Guide rail is used as a wear strip, the insert should be fastened to the sheath at the leading end of the rail with a sheet metal screw or heavy wire pin. This will prevent the insert from sliding within the sheath and allows for thermal expansion and contraction.



Note: Tolerance on height is ± 0.025 . 4, 5 and 6 ft. lengths are also available. Other lengths can be cut to order.